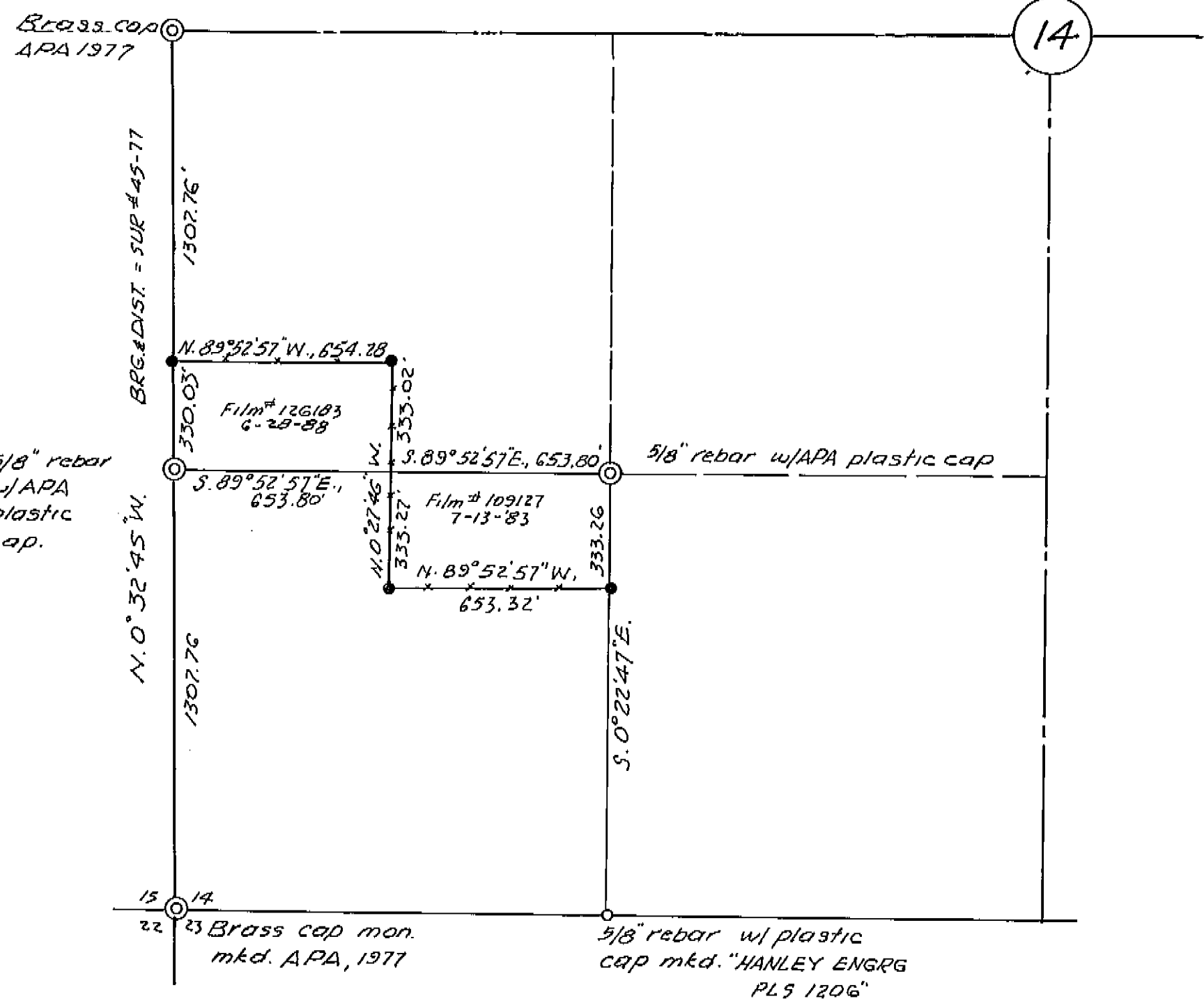


T. 2 S., R. 37 E., W. M.

14



BASIS OF BEARING
UNION COUNTY SURVEY # 45-77 - RECORD
BEARING ALONG THE WEST LINE OF SW 1/4
= N. 0° 32' 45" W.

LEGEND

- ⊙ Found APA monument as noted.
- found HANLEY ENGR monument as noted.
- Set 3/8" x 30" rebar w/ HANLEY ENGRG. CAP PLS 1206."
- Property lines mkd with steel fc. posts.

NARRATIVE

The purpose of this survey for WTD Industries was to mark on the ground the lines of ownership described in Union County Deeds, microfilm nos. 109127 and 126183. Corners are marked on the ground as shown and the lines are posted with 5 1/2 feet long steel fc. posts.

The survey was performed according to standard survey practices.

MAP OF SURVEY

PROPERTY LINE POSTING IN SW 1/4 OF SECTION 14, T. 2 S., R. 37 E., W. M.
For WTD Industries
JUNE 18, 1990
Scale 1" = 400' by HANLEY ENGRG.
2043 MAIN STREET, BAKER CITY, ORE.

UNION COUNTY SURVEYOR	
Ret. received	9-1-90
Ret. paid	9-17-90
By	Greg Oberlin
File No.	29-90

REGISTERED PROFESSIONAL LAND SURVEYOR

James D. Hanley

OREGON
SEPTEMBER 23, 1977
JAMES D. HANLEY
1206