

LEGEND

- FOUND ORIGINAL CORNER AND/OR ACCESSORIES PER OFFICIAL RECORD. SET 2-INCH DIAM. ALUMINUM PIPE, 30 INCHES LONG, WITH 2 1/2-INCH DIAM. ALUMINUM CAP... NO TRACE OF ORIGINAL CORNER OR ACCESSORIES FOUND - CORNER POSITION NOT REESTABLISHED... RECORD OF ORIGINAL SURVEY PERFORMED BY HENRY MELDRUM UNDER GLO SURVEY NO. 450 DATED JUNE 11, 1882...

HISTORY OF SURVEYS

THE LINES BETWEEN SECTIONS 3, 4, 5, 6 AND 31, 32, 33, 34, T. 2 S., R. 40 E., W.M., WERE SURVEYED BY TIMOTHY W. DAVEAUPORT UNDER GLO SURVEY CONTRACT NO. 102, DATED JULY 20, 1863... THE EAST BOUNDARY OF SECTIONS 14, 15, T. 2 S., R. 40 E., W.M., AND THE LINES BETWEEN SECTIONS 1, 2, 3, 4, 5, 6, T. 2 S., R. 40 E., W.M., WERE SURVEYED BY W.B. BARR UNDER GLO SURVEY CONTRACT NO. 355, DATED JUNE 14, 1880...

THE NORTH AND EAST LINES OF SECTION 10 WERE RESURVEYED BY WILLIAM L. HANLEY, ORLS 1639, AS A PART OF THIS SURVEY AND RECORDED ON UNION COUNTY SURVEY NO. 35-88... THE NORTH AND EAST LINES OF SECTION 28, T. 2 S., R. 40 E., W.M., WERE SURVEYED BY DANIEL F. THOMPSON, U.S. DEPUTY SURVEYOR, UNDER GLO SURVEY CONTRACT NO. 103, DATED SEPT. 03, 1863...

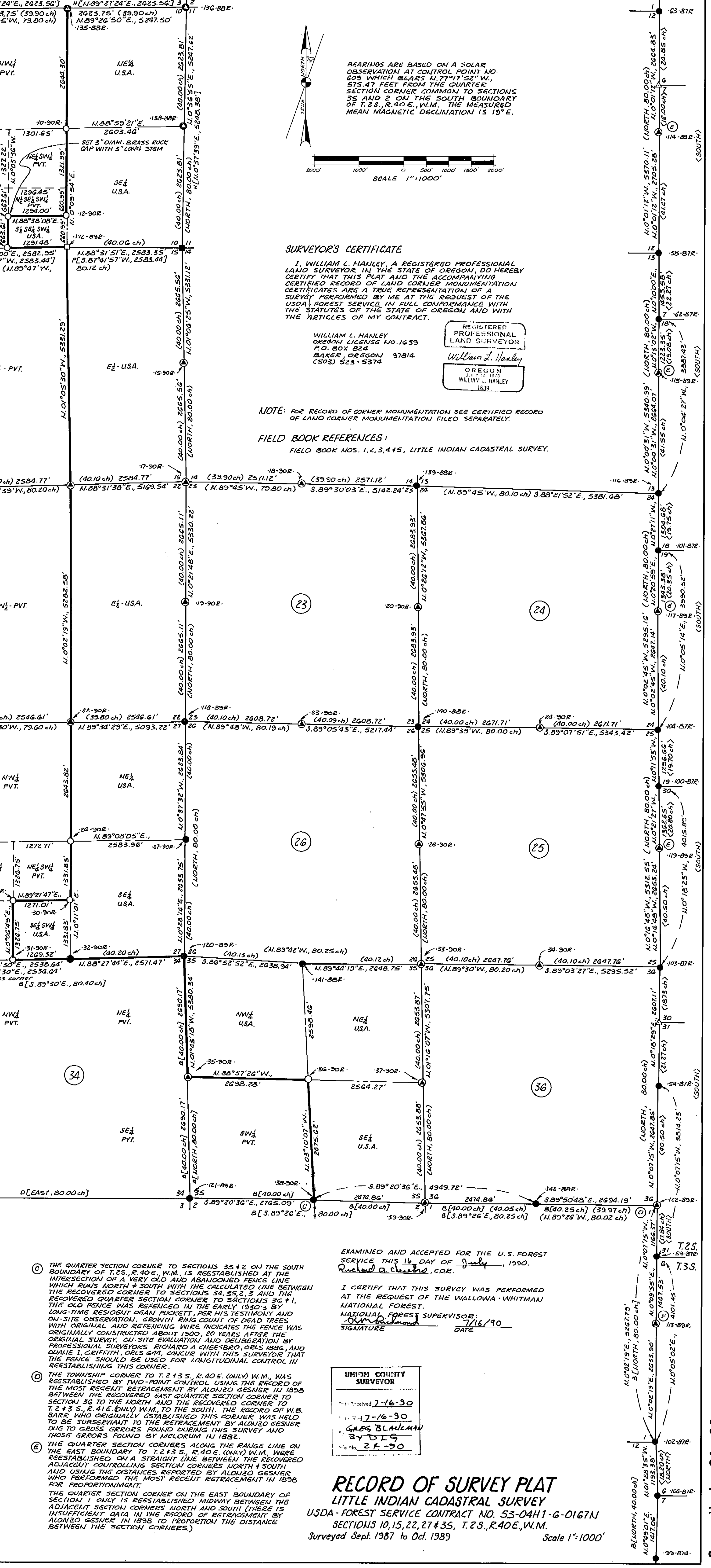
THE QUARTER SECTION CORNER TO SECTIONS 35 & 2 ON THE SOUTH BOUNDARY OF T. 2 S., R. 40 E., W.M., IS REESTABLISHED AT THE INTERSECTION OF A VERY OLD AND ABANDONED FENCE LINE WHICH RUNS NORTH & SOUTH WITH THE CALCULATED LINE BETWEEN THE RECOVERED QUARTER SECTION CORNERS TO SECTIONS 34, 35, 2, 3 AND THE RECOVERED QUARTER SECTION CORNER TO SECTIONS 36 & 1... THE TOWNSHIP CORNER TO T. 2 & 3 S., R. 40 E. (ONLY) W.M., WAS REESTABLISHED BY TWO-POINT CONTROL USING THE RECORD OF THE MOST RECENT RETRACEMENT BY ALONZO GESNER IN 1898...

NARRATIVE OF SURVEY

THIS RETRACEMENT AND DEPENDENT RESURVEY WAS PERFORMED BY WILLIAM L. HANLEY, ORLS 1639, UNDER CONTRACT WITH THE USDA FOREST SERVICE FOR THE PURPOSE OF REESTABLISHING AND/OR REMONUMENTING CERTAIN LAND SURVEY CORNERS AND TO MARK THE BOUNDARY BETWEEN PRIVATE OWNERSHIP AND THOSE LANDS OF THE PUBLIC DOMAIN ADMINISTERED BY THE USDA FOREST SERVICE... THE SEVERAL CORNERS IDENTIFIED IN THE LEGEND AS LOST WERE DILIGENTLY SEARCHED FOR AT THEIR CALCULATED POSITIONS FROM SURVEY CONTROL POINTS MAKING USE OF RECORD TOPOGRAPHIC CALLS...

- A THE CORNER TO SECTIONS 21, 22, 27, 28 IS REMONUMENTED AT THE CENTER OF A ROCK MOUND AT THE INTERSECTION OF THE QUARTER SECTION CORNERS NORTH & SOUTH... B THE QUARTER SECTION CORNER TO SECTIONS 21 & 28 IS REMONUMENTED AT THE INTERSECTION OF VERY OLD AND LONG USED FENCE LINES WHICH RUN NORTH, SOUTH AND WEST.

THE QUARTER SECTION CORNER ON THE EAST BOUNDARY OF SECTION 1 ONLY IS REESTABLISHED MIDWAY BETWEEN THE ADJACENT SECTION CORNERS NORTH & SOUTH (THERE IS INSUFFICIENT DATA IN THE RECORD OF RETRACEMENT BY ALONZO GESNER IN 1898 TO PROPORTION THE DISTANCE BETWEEN THE SECTION CORNERS)



SURVEYOR'S CERTIFICATE

I, WILLIAM L. HANLEY, A REGISTERED PROFESSIONAL LAND SURVEYOR IN THE STATE OF OREGON, DO HEREBY CERTIFY THAT THIS PLAT AND THE ACCOMPANYING CERTIFIED RECORD OF LAND CORNER MONUMENTATION CERTIFICATES ARE A TRUE REPRESENTATION OF A SURVEY PERFORMED BY ME AT THE REQUEST OF THE USDA FOREST SERVICE IN FULL CONFORMANCE WITH THE STATUTES OF THE STATE OF OREGON AND WITH THE ARTICLES OF MY CONTRACT.

REGISTERED PROFESSIONAL LAND SURVEYOR William L. Hanley OREGON WILLIAM L. HANLEY 1639

NOTE: FOR RECORD OF CORNER MONUMENTATION SEE CERTIFIED RECORD OF LAND CORNER MONUMENTATION FILED SEPARATELY.

FIELD BOOK REFERENCES: FIELD BOOK NOS. 1, 2, 3, 4 & 5, LITTLE INDIAN CADASTRAL SURVEY.

EXAMINED AND ACCEPTED FOR THE U.S. FOREST SERVICE THIS 14 DAY OF July, 1990. Richard A. Chubb, CDE.

I CERTIFY THAT THIS SURVEY WAS PERFORMED AT THE REQUEST OF THE WALLOWA-WHITMAN NATIONAL FOREST. NATIONAL FOREST SUPERVISOR: [Signature] DATE: 7/16/90

UNION COUNTY SURVEYOR [Signature] 7-16-90

RECORD OF SURVEY PLAT LITTLE INDIAN CADASTRAL SURVEY USDA - FOREST SERVICE CONTRACT NO. 53-04H1-G-0167N SECTIONS 10, 15, 22, 27 & 35, T. 2 S., R. 40 E., W.M. Surveyed Sept. 1987 to Oct. 1989 Scale 1"=1000'