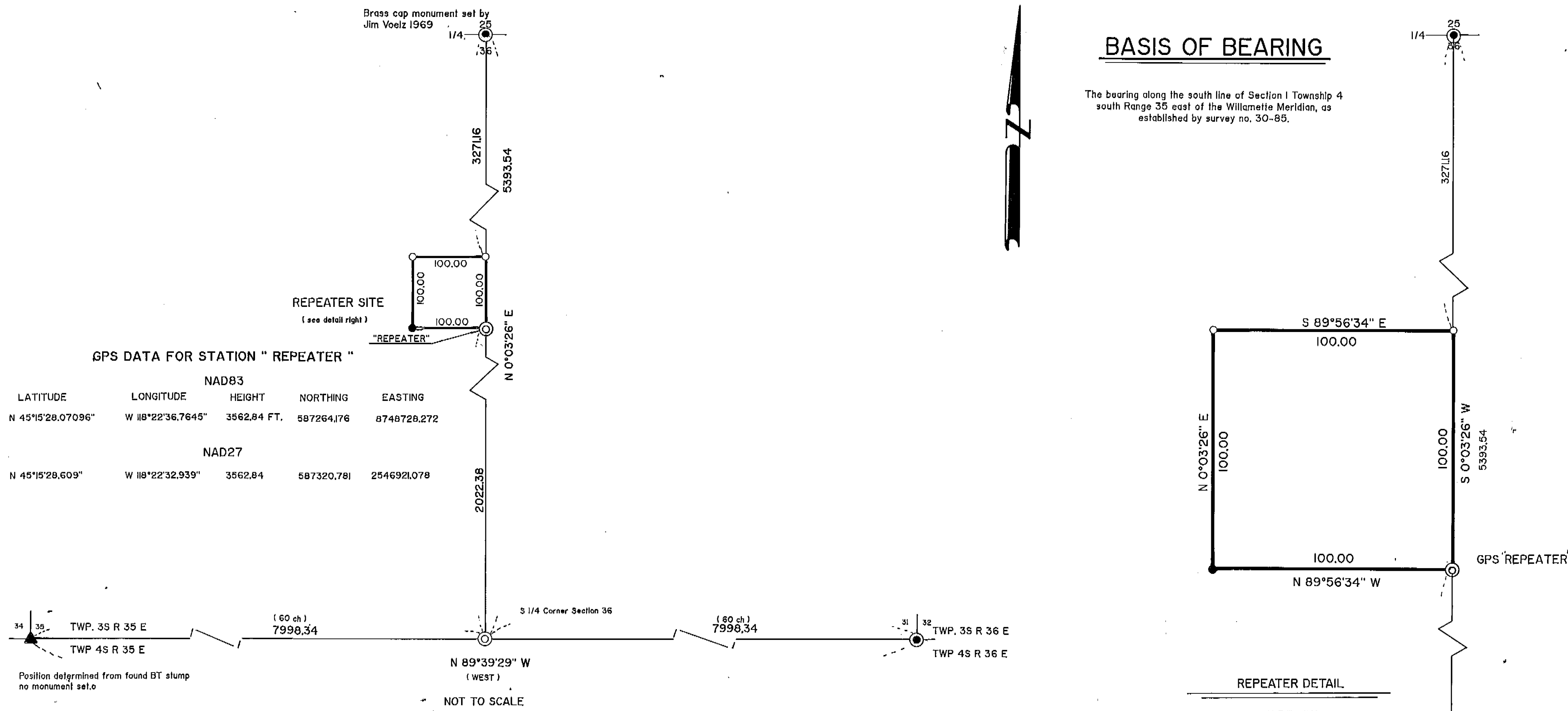


Brass cap monument set by Jim Voelz 1969

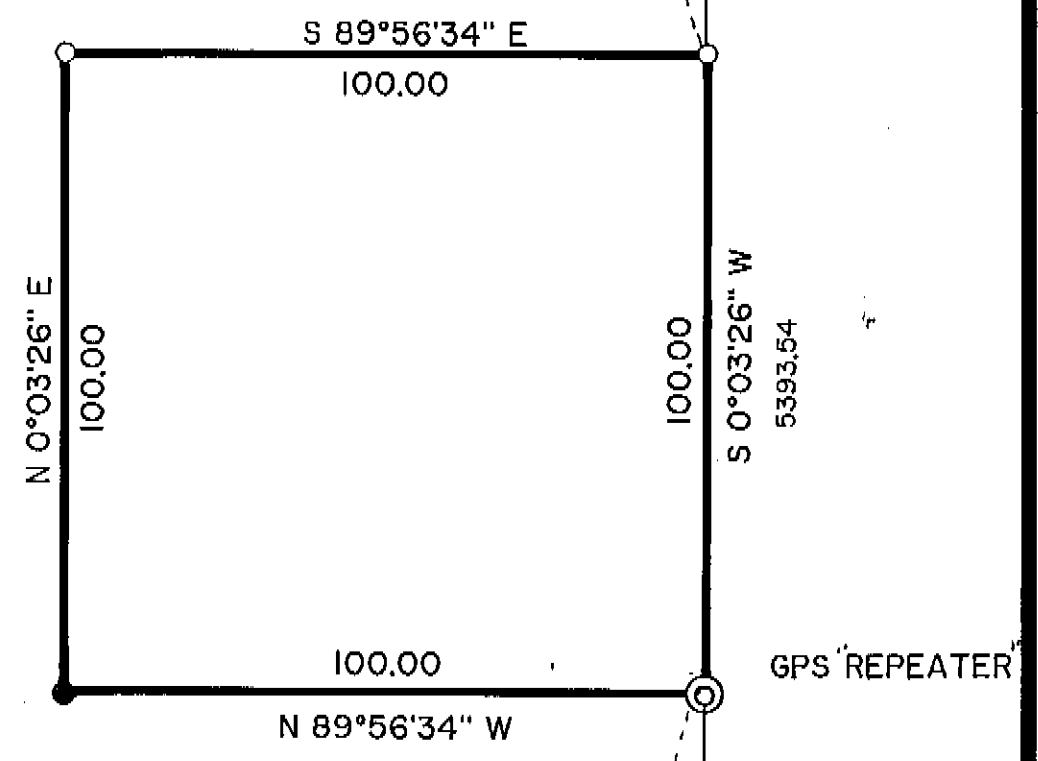
BASIS OF BEARING

The bearing along the south line of Section 1 Township 4 south Range 35 east of the Willamette Meridian, as established by survey no. 30-85.



GPS DATA FOR STATION " REPEATER "

| NAD83 | | | | |
|-------------------|-------------------|-------------|------------|-------------|
| LATITUDE | LONGITUDE | HEIGHT | NORTHING | EASTING |
| N 45°15'28.07096" | W 118°22'36.7645" | 3562.84 FT. | 587264.176 | 8748728.272 |
| NAD27 | | | | |
| N 45°15'28.609" | W 118°22'32.939" | 3562.84 | 587320.781 | 2546921.078 |



LEGEND

- Set 5/8" x 30" Iron pin with plastic cup marked BGA SURVEY MARKER.
- Found 2 1/2" Aluminum monument set from original GLO evidence
- ⊙ Set 2 1/2" x 30" Aluminum monument at proportion position or at GPS station as noted.
- ▲ Corner position determined from GLO Record no monument set
- () Record bearing or distance
- Chiseled 4" cross in rock outcrop for properly corner

NARRATIVE

This survey was ordered by Don Malmstrom of Affiliated Land Services Incorporated on behalf of Telephone Utilities of Eastern Oregon Incorporated. The purpose of this survey was to establish an easement for installing a Passive Repeater for telephone service to the Starkey area. Mr. Malmstrom pointed out on the ground the approximate site, and indicated that it was important that the East line of the Easement be contiguous with the center of section 36. I proportioned the S 1/4 corner of section 36 from the position established by the found B.T. at the SW corner of Section 35 TWP. 3 S, R 35 E, and the found monument at the SE. corner of section 31 TWP. 3 S, R 36 E. I single proportioned this corner into position as this is the manner in which it was established. Diligent search was made of the township corner and at the S 1/4 corner positions of section 36. Heavy logging occurred at both sites and no original evidence was found for either corner. Topo calls are in harmony with my position. GPS stations were required on one corner of this parcel. We chose the southeast corner so that it was also on the center of section line.

REFERENCE MATERIAL

Survey number 30-85
GLO NOTES
37-88

UNION COUNTY SURVEYOR

Date Recorded 5-15-90
Date Filed 5-25-90
By Gregory T. Blackman
File No. 15-90

REGISTERED PROFESSIONAL LAND SURVEYOR

Gregory T. Blackman

OREGON
JULY 13, 1973
GREGORY T. BLACKMAN
991

BAGETT - GRIFFITH & ASSOCIATES
LaGrande, Oregon

MAP OF SURVEY
STARKEY PASSIVE REPEATER EASEMENT SITE
SITUATE IN THE NE 1/4 OF THE SW 1/4
SECTION 36 TWP. 3 S R.35 E. WM.

UNION COUNTY, OREGON

| | | |
|-----------------|---------------------------|------|
| SURVEYED FOR | Affiliated Land Services. | |
| SURVEYED BY | GTB | 5-90 |
| Scale: 1" = 30' | Drawn by: LDP | 5-90 |