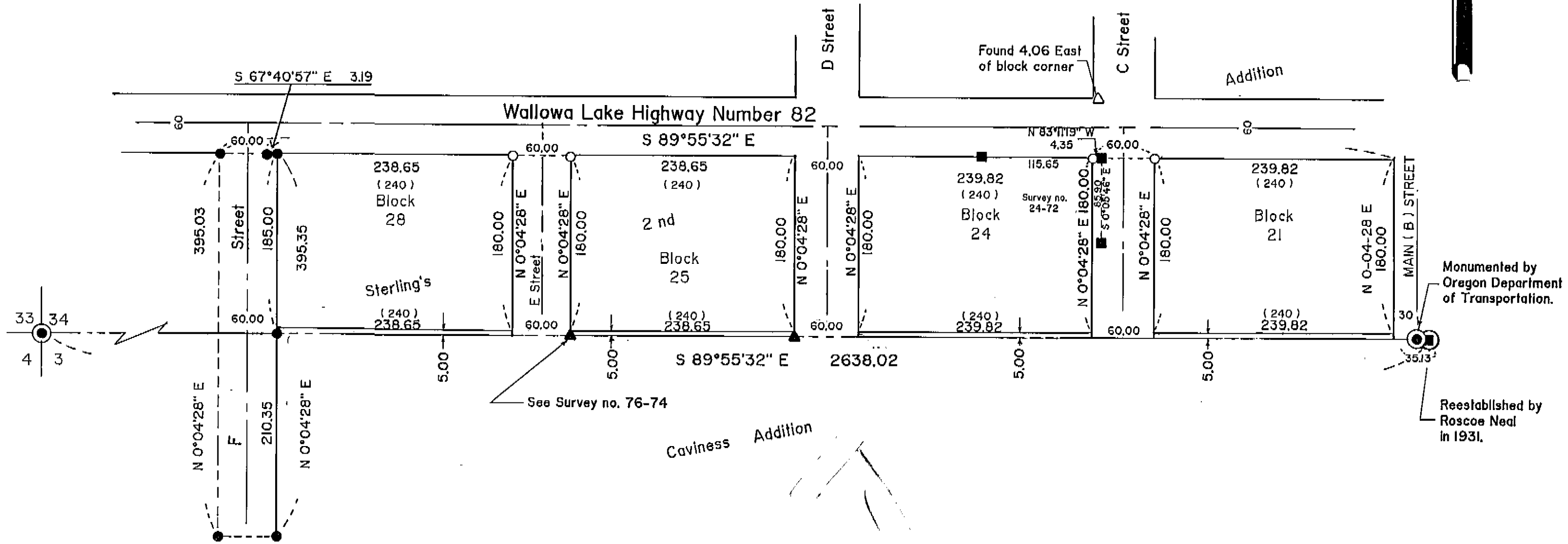


BASIS OF BEARING

The forward bearing as published by the U.S.C. and G. S. from Δ College to Δ Valley dated 1946.



REFERENCE MATERIAL

- Survey Number 27-85
- Survey Number 44-83
- Survey Number 24-72
- Survey Number 39-65
- Survey Number 85-77
- Survey Number 93-79

Plat of Sterling's 2nd Addition

NARRATIVE

This survey was made for the Oregon Department of Transportation, as requested by Tom Carmen, to locate the block corners on the South line of Highway 82 through Sterling's 2nd Addition to Island City as shown.

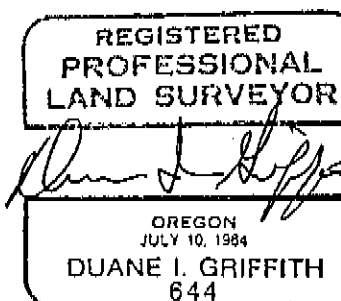
In 1973 R.L. Fellers, an ODOT engineer, found a stone marked 1/4 approximately 5 feet Northwest of the iron pipe. This position was monumented with a brass cap in a valve box, see survey no. 93-79. The iron pipe was set by Roscoe Neal and has been used as the 1/4 corner since 1931, see survey no. 27-85. A study of existing conditions, streets, fences, buildings, and lines of occupancy indicate that Sterling's 2nd Addition was probably based on this ODOT 1/4 corner. This situation is also discussed in survey nos. 44-83 and 27-85.

I place the Southeast corner of Block 21, 30.00 feet West of the ODOT corner and 5.00 feet North of the section line. Said section line being from the said Neal corner to the section corner 1/2 mile West. I then proportion the block corners West, to the found 5/8" iron pin on the West line of D Street, see survey no. 27-85. I place the North-South lines of Blocks 21, 24, 25, and 28 perpendicular to the section line (N 0°04'28" E). This is also parallel to F Street as shown on survey no. 44-83. I find this to be harmonious with existing conditions. I place the Northeast corner of Block 21, N 0°24'28" E, 180.00 feet (record distance) from the Southeast corner of said Block 21 as hereon before described. I place the Northeast corner of Block 25, N 0°04'28" E, 185.00 feet (record distance) from the 5/8" pin on the section line and West line of D Street. I then proportion block corners East and West from this position as shown.

I find no other unusual conditions on this survey.

LEGEND

- Set 5/8" x 30" Iron pin with plastic cap marked BGA SURVEY MARKER.
- Found 5/8" Iron pin with plastic cap marked BGA SURVEY MARKER set by Survey no. 44-83
- Found 5/8" Iron pin set by Survey no. 24-72
- ▲ Found 5/8" Iron pin set by or shown on Survey no. 27-85.
- △ Found 5/8" Iron pin set by Survey no. 39-65.
- Found unrecorded 5/8" Iron pin with plastic cap marked TELEK.
- Found Iron pipe with cap marked +.
- Found brass cap monument.
- Section line



UNION COUNTY SURVEYOR	
Date Received	4-13-90
Date Filed	4-21-90
By	[Signature]
File No.	9-90

BAGETT - GRIFFITH & ASSOCIATES		La Grande, Oregon	
Map of Survey			
Located in Sterling's Second Addition to Island City			
UNION COUNTY, OREGON			
SURVEYED, FOR	ODOT (Tom Carmen)		
SURVEYED BY	DIG		4-90
Scale: 1" = 100'	Drawn by: JPP		4-90

SURVEY No. 9-90