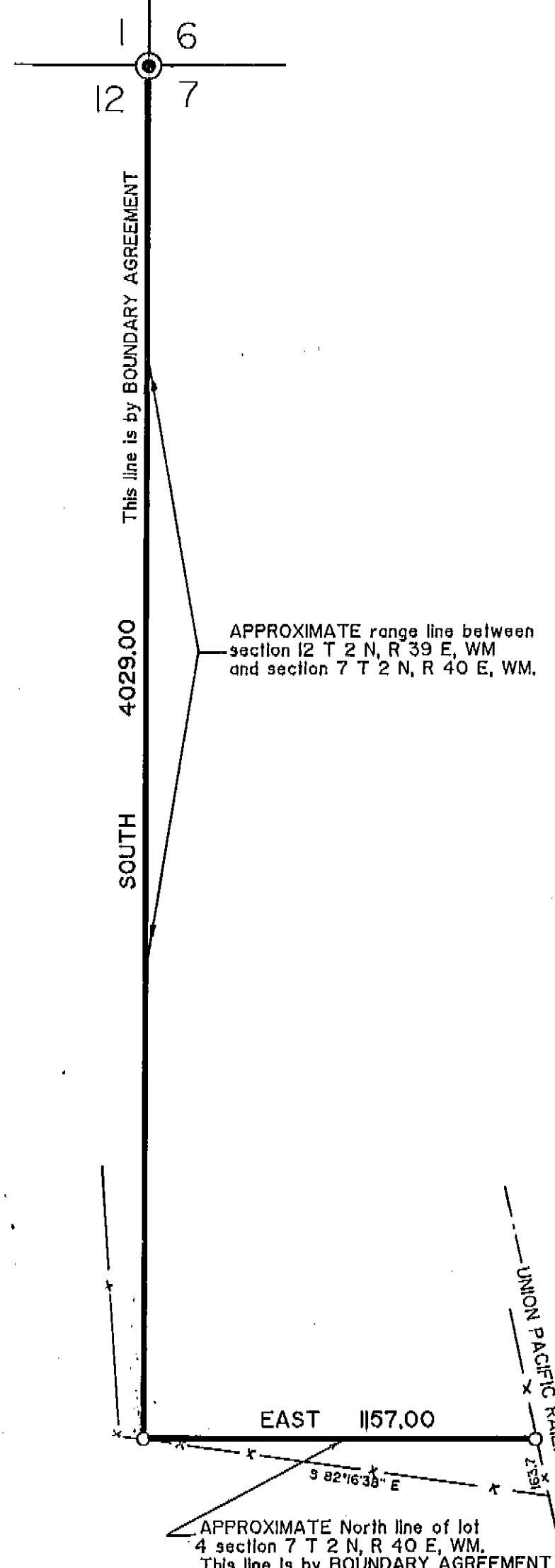


T 2 N, R 39 E, WM | T 2 N, R 40 E, WM



This line is by BOUNDARY AGREEMENT

4029.00

SOUTH

EAST 1157.00

APPROXIMATE North line of lot 4 section 7 T 2 N, R 40 E, WM. This line is by BOUNDARY AGREEMENT

APPROXIMATE range line between section 12 T 2 N, R 39 E, WM and section 7 T 2 N, R 40 E, WM.

**REFERENCE MATERIAL**

Survey Number 24-70  
 Union County Remonumentation Records  
 Union County Deed Records  
 microfilm number 129410

NOTE: This pin is for directional purposes only it is not on the railroad right of way line.

**BASIS OF BEARING**

Solar observations taken at a point 223 feet South and 9 feet East of the Northwest corner of section 7 Township 2 North, Range 40 East of the Willamette Meridian.



**LEGEND**

- Found aluminum cap monument set by James H. Hambleton LS 645.
- Set 5/8" x 30" iron pin with plastic cap marked BGA SURVEY MARKER.
- x — Fence line

**NARRATIVE**

This survey was ordered by Mourad Donigian. Mr. Donigian wished to define a line for a boundary agreement. Our instructions were to begin at the Northwest corner of section 7 Township 2 North, Range 40 East of the Willamette Meridian. We projected a due South line to the intersection of a fence line at the approximate North line of lot 4 section 7. We then projected a due East line to the intersection of the railroad right of way fence line. I find no problem with this survey.

**UNION COUNTY SURVEYOR**

Date Received 2-26-90  
 Date Filed 2-26-90  
 By R. ROBINSON, DEPUTY  
 File No. 5-90

REGISTERED PROFESSIONAL LAND SURVEYOR

*Gregory T. Blackman*  
 OREGON  
 GREGORY T. BLACKMAN  
 991

<b>BAGETT - GRIFFITH &amp; ASSOCIATES</b> LaGrande, Oregon Map of Survey		
The approximate range line between section 12 Township 2 North, Range 39 East and section 7 Township 2 North Range 40 East of the Willamette Meridian, and the approximate North line of lot 4 section 7. UNION COUNTY, OREGON		
SURVEYED FOR	Mourad Donigian	
SURVEYED BY	GTB	2-22-90
Scale: 1" = 400'	Drawn by: JPP	2-23-90

Survey Number 5-90