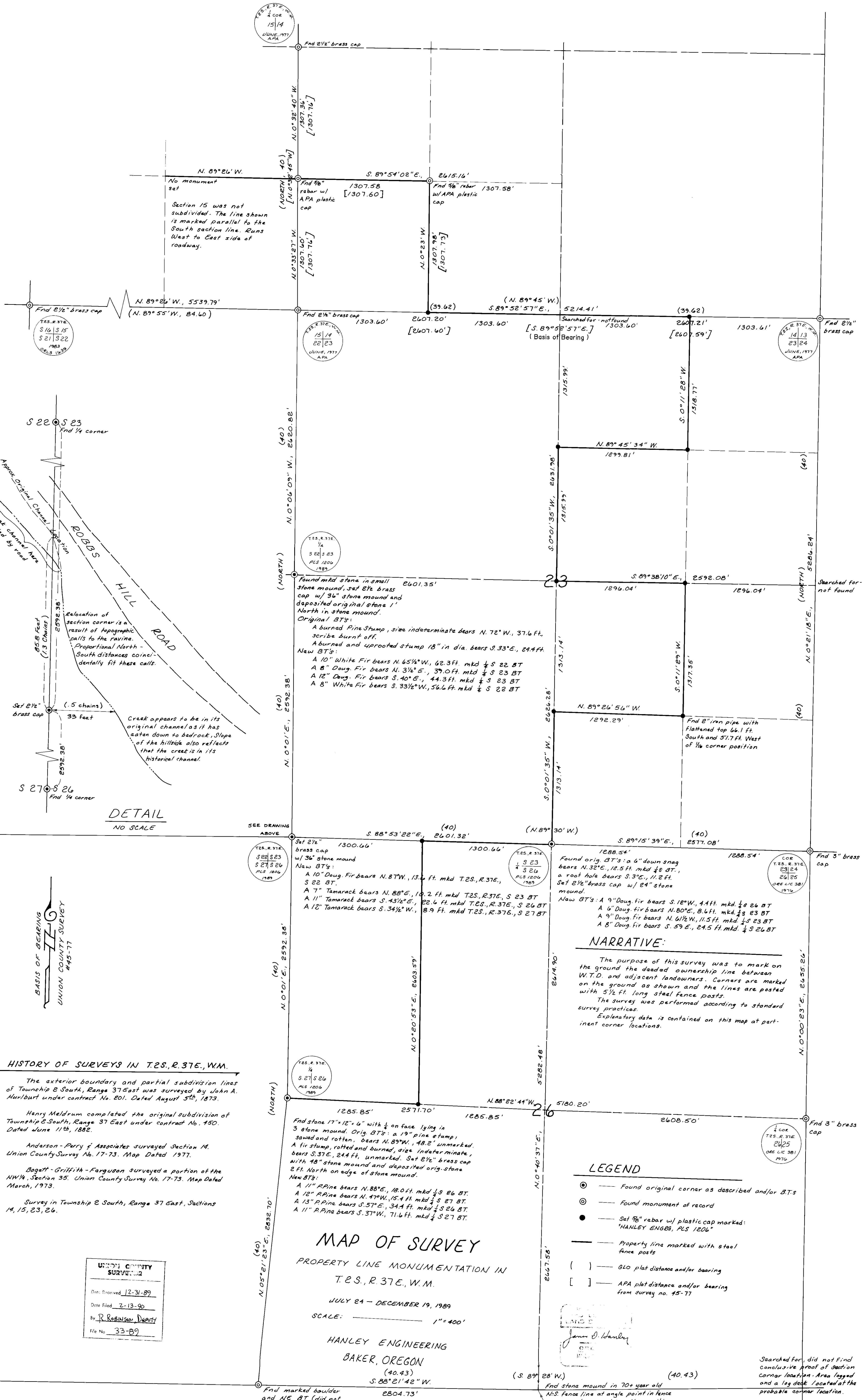
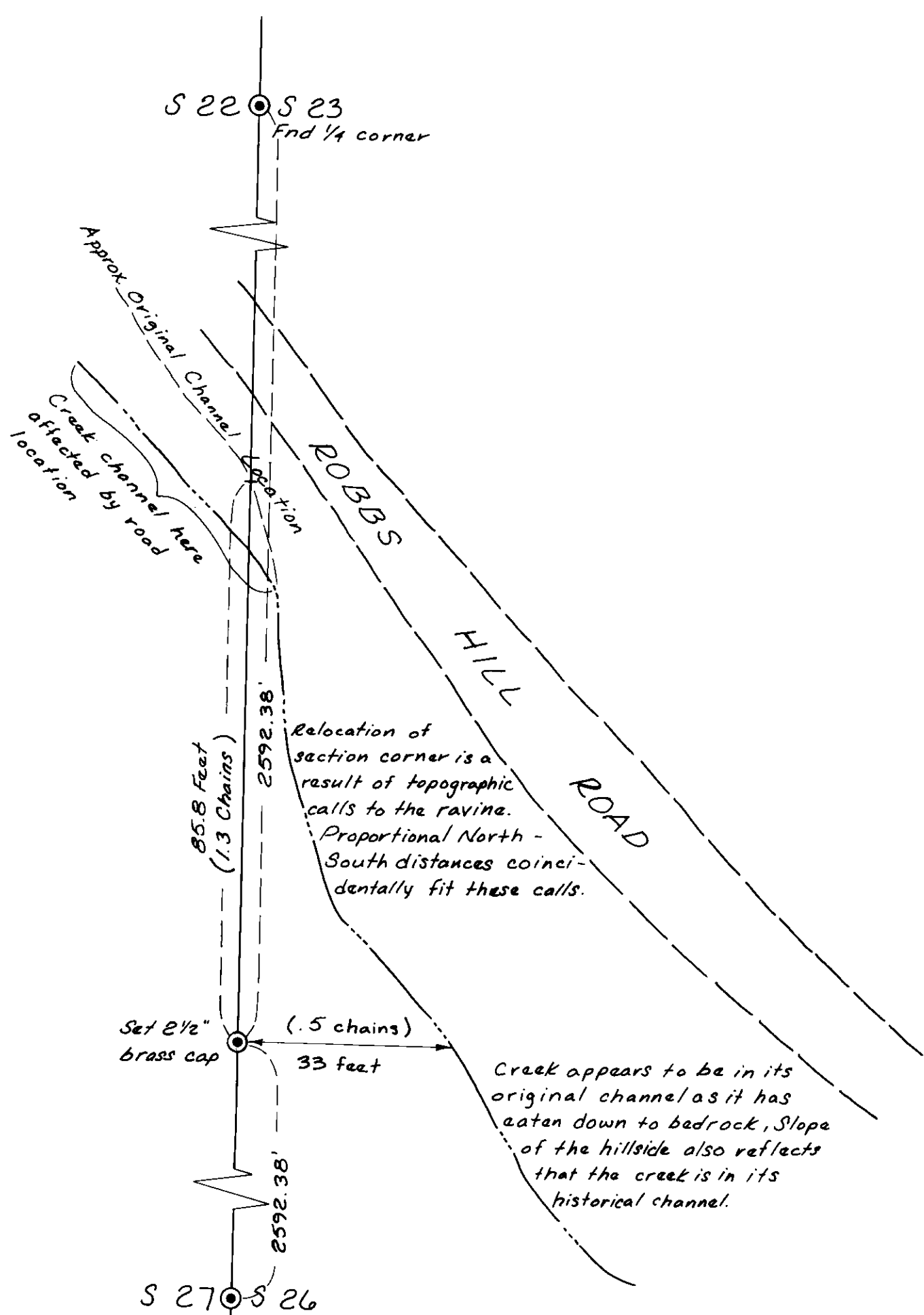


TES. R. 37E, W.M.  
COR  
15/14  
JUNE, 1977  
APA



No monument set  
Section 15 was not subdivided. The line shown is marked parallel to the South section line. Runs West to East side of roadway.

N. 89° 26' W., 5539.79'  
(N. 89° 55' W., 84.60)



DETAIL  
NO SCALE

BASIS OF BEARING  
UNION COUNTY SURVEY  
#45-77

HISTORY OF SURVEYS IN T.2S., R.37E., W.M.

The exterior boundary and partial subdivision lines of Township 2 South, Range 37 East was surveyed by John A. Hurlburt under contract No. 201. Dated August 5<sup>th</sup>, 1873.  
Henry Meldrum completed the original subdivision of Township 2 South, Range 37 East under contract No. 450. Dated June 11<sup>th</sup>, 1882.  
Anderson - Perry & Associates surveyed Section 14. Union County Survey No. 17-73. Map Dated 1977.  
Baggett - Griffith - Ferguson surveyed a portion of the NW 1/4, Section 35. Union County Survey No. 17-73. Map Dated March, 1973.  
Survey in Township 2 South, Range 37 East, Sections 14, 15, 23, 26.

UNION COUNTY SURVEYOR  
Date Received 12-31-89  
Date Filed 2-13-90  
By R. ROBINSON DEARY  
File No. 33-89

MAP OF SURVEY  
PROPERTY LINE MONUMENTATION IN  
T.2S., R.37E., W.M.

JULY 24 - DECEMBER 19, 1989  
SCALE: 1" = 400'

HANLEY ENGINEERING  
BAKER, OREGON  
(40.43)

NARRATIVE:

The purpose of this survey was to mark on the ground the deaded ownership line between W.T.D. and adjacent landowners. Corners are marked on the ground as shown and the lines are posted with 5 1/2 ft. long steel fence posts.  
The survey was performed according to standard survey practices.  
Explanatory data is contained on this map at pertinent corner locations.

LEGEND

- — Found original corner as described and/or B.T.s
- ⊙ — Found monument of record
- — Set 3/8" rebar w/ plastic cap marked: "HANLEY ENGBB, PLS 1206"
- — Property line marked with steel fence posts
- ( ) — BLO plat distance and/or bearing
- [ ] — APA plat distance and/or bearing from survey no. 45-77

JAMES O. HANLEY  
REGISTERED PROFESSIONAL SURVEYOR  
No. 1000

Searched for, did not find conclusive proof of section corner location. Area logged and a log deck located at the probable corner location.

Found marked boulder and NE BT (did not monument)

Found stone mound in 70+ year old N.S. fence line at angle point in fence - Accepted as marking the position of original quarter corner

Searched for - not found

Found 3" brass cap

Found 3" brass cap

SEE DRAWING ABOVE

TES. R. 37E, W.M.  
COR  
15/14  
JUNE, 1977  
APA

TES. R. 37E, W.M.  
COR  
15/14  
JUNE, 1977  
APA

TES. R. 37E, W.M.  
COR  
15/14  
JUNE, 1977  
APA

TES. R. 37E, W.M.  
COR  
15/14  
JUNE, 1977  
APA

TES. R. 37E, W.M.  
COR  
15/14  
JUNE, 1977  
APA

TES. R. 37E, W.M.  
COR  
15/14  
JUNE, 1977  
APA

TES. R. 37E, W.M.  
COR  
15/14  
JUNE, 1977  
APA

TES. R. 37E, W.M.  
COR  
15/14  
JUNE, 1977  
APA

TES. R. 37E, W.M.  
COR  
15/14  
JUNE, 1977  
APA

TES. R. 37E, W.M.  
COR  
15/14  
JUNE, 1977  
APA

TES. R. 37E, W.M.  
COR  
15/14  
JUNE, 1977  
APA

TES. R. 37E, W.M.  
COR  
15/14  
JUNE, 1977  
APA