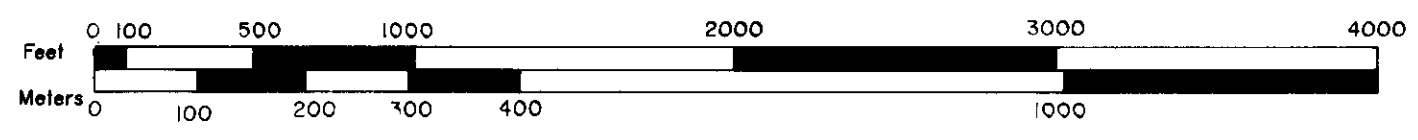


BASIS OF BEARING

Solar observation taken at the Southwest corner of Section 36, Township 2 South, Range 36 East of the Willamette Meridian. (Hour angle method, same basis of bearing as survey number 4-89)

Date: November 1, 1988
Latitude: 45° 20' 29"
Longitude: 118° 14' 27"
Time: 16:46:42 (GCT)
Magnetic declination: 17' East

Scale 1" = 600'



1 Meter = 3.28083333 Feet

LEGEND

- Found brass cap monument set by others (see HISTORY OF SURVEYS)
- Found original GLO survey evidence and set 2 1/2" x 30" aluminum monument.
- Set 2 1/2" x 30" aluminum monument at position determined by survey.
- Record information of GLO contract number 201 by John A. Hurlburt.
- Record information of GLO contract number 450 by Henry Meldrum.
- Record information of Union County survey number 21-71 by James G. Voelz.
- Record information of Union County survey number 43-72 by Duane I. Griffith.
- National Forest boundary line posted to standard.
- Existing fence line
- P Privately owned land
- NF National Forest land

HISTORY OF SURVEYS

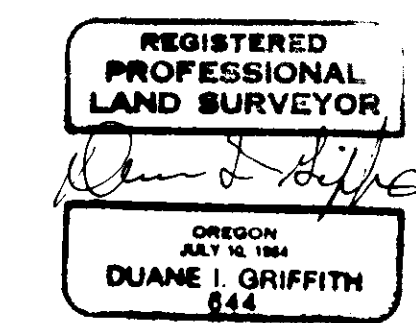
The Range Line was originally established by John A. Hurlburt under GLO contract number 201, dated Aug. 5, 1873. Hurlburt also subdivided the south tier of sections in T 2 S, R 37 E. The Range Line was retraced by Henry Meldrum under GLO contract number 450, dated June 11, 1882. Meldrum set new section corners only, on the Range Line for his subdivision of T 2 S, R 37 E. The SW corner of Section 30 was monumented with a brass cap, by James G. Voelz, OPLS 381, from original GLO evidence in 1970. Map of Survey no. 21-71. Voelz also retraced the south line of Section 30. The south line of Section 30 was retraced in 1972 by Duane I. Griffith, OPLS 644, Map of Survey no. 43-72. In 1983 William L. Hanley, OPLS 1639, monumented the following section and 1/4 section corners from original GLO evidence: Section 19, the NE corner, the SE corner, and the S 1/4 corner; Section 30, the E 1/4 corner. The NE corner of Section 13, T 2 S, R 36 E, on the Range Line, was monumented in 1988 by Duane I. Griffith, OPLS 644. Griffith also retraced the south line of Section 30, T 2 S, R 37 E and monumented the SE corner of same, Map of survey 4-89. The Range Line on the East line of Section 24, T 2 S, R 36 E, was retraced in the spring of 1989 by Duane I. Griffith, OPLS 644. The NE and the SE section corners and the E 1/4 corners were monumented, Map of Survey no. 11-89.

SURVEYOR'S STATEMENT

I, Duane I. Griffith, Registered Land Surveyor in the State of Oregon, hereby certify that this plot and the notes hereon, or attached are a true and correct representation of the survey I made in October and November, 1989, at the request of the USDA Forest Service, in accordance with the statutes of the State of Oregon and with the articles of my contract. I began this survey by retracing the Range line and sections as shown. I was unable to find any original GLO evidence of the East 1/4 corner of Section 25, Township 2 South, Range 36 East. The area has been extensively worked. A railroad main line and a county road have been built in the area. I did not use the GLO creek and stage road calls South of the corner for proportion because I feel they are not in the position they were in in the late 1800's. I therefore proportioned the corner between the Northeast and Southeast corners of Section 25, Township 2 South, Range 36 East. In 1882, Meldrum retraced the Range line in preparation to his subdivision of Township 2 South, Range 37 East. Meldrum set section corners on the Range line, but did not set 1/4 corners, pertaining to Range 37 East. I therefore had to proportion the 1/4 corners on the Range line pertaining to Range 37 East at the mean latitudinal position between the controlling corners; hence in a cardinal direction to a point on the Range line. The same method was used to set the S 1/16 corner on the W line of S 19. I then subdivide the sections as shown to the extent necessary to locate the National Forest boundary lines. I found the fence lines in the Southwest 1/4 of Section 19 and Section 30 to vary from the true line. These are shown on the annexed map. I also find the building encroachment as shown on the detail inset on the annexed map. I also find some possible timber trespass in section 19 and 30 as shown on the annexed map. I find no unusual conditions on this survey.

Information for U.S. Forest Service record keeping purposes only. PROJECT NAME: Cantrell Cadastral Survey (Phase III). CONTRACT NUMBER: 53-04M3-8-03324. FIELD BOOKS: Traverse book numbers 1, 2, 3, 4, 5, and 6; Remonumentation book Numbers 2 and 3. Examined and accepted for the U.S. Forest Service this 11th day of January, 1989. Richard A. Chuelo, C.O.R. I certify that this survey was performed at the request of the Wallowa-Whitman National Forest. NATIONAL FOREST SUPERVISOR: William K. Part, 11/1/89.

NOTE: For monumentation information, see monumentation records filed separately

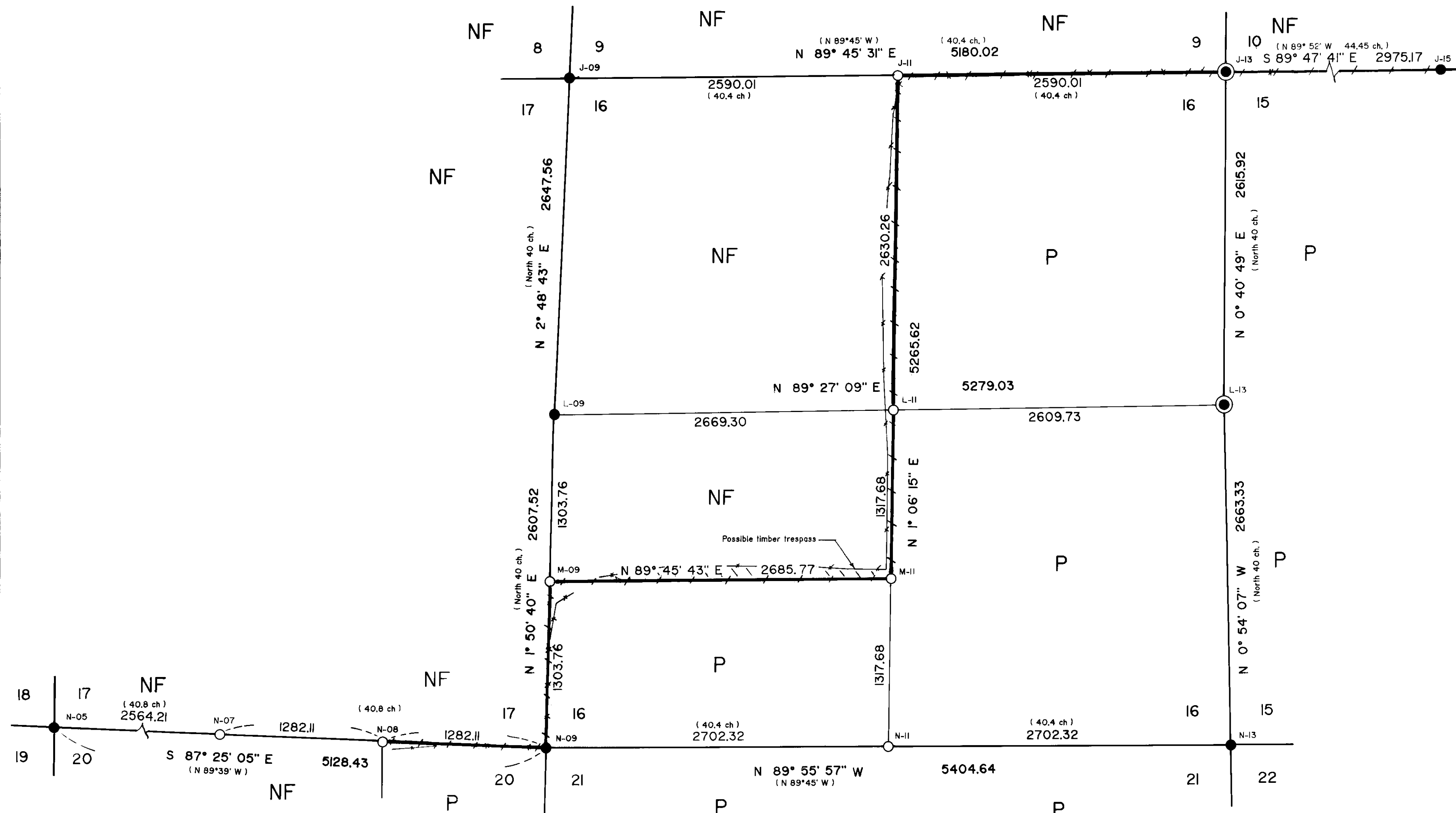


Duane I. Griffith, OPLS 644, Baggett, Griffith and Associates, 2006 Adams Avenue, LaGrande, Oregon 97850. November 27, 1989.

UNION COUNTY SURVEYOR stamp. Date Received: 1-8-90, Date Filed: 1-8-90, By: R. Robinson, Deputy, File No: 26-89.

BAGETT - GRIFFITH & ASSOCIATES LaGrande, Oregon. MAP OF SURVEY. Location of the National Forest boundary within Sections 18, 19, and 30. Township 2 South, Range 37 East of the Willamette Meridian. UNION COUNTY, OREGON. SURVEYED FOR: Wallowa-Whitman National Forest. SURVEYED BY: dig. Scale: 1" = 600'. Drawn by: dig. Nov. 1989.

T 2 S R 37 E



BASIS OF BEARING

Solar observation taken at the Southwest corner of Section 36, Township 2 South, Range 36 East of the Willamette Meridian. (Hour angle method, same basis of bearing as survey number 4-89)

Date November 1, 1988
 Latitude 45° 20' 29"
 Longitude 118° 14' 27"
 Time 16:46:42 (GCT)
 Magnetic declination 17° East

Scale: 1" = 600'



1 Meter = 3.28083333 feet

History of Surveys

The Township was subdivided by John A. Hurlburt under GLO contract number 201 dated August 5, 1873.

In 1983 William L. Hanley, OPLS 1639, monumented the following section and 1/4 corners from original GLO survey evidence: Section 16, the Southeast section corner, the Southwest section corner, the Northwest section corner, and the West 1/4 corner. Section 17, the Southwest section corner.

National Forest Lands

Township 2 South Range 37 East

Section 17
All

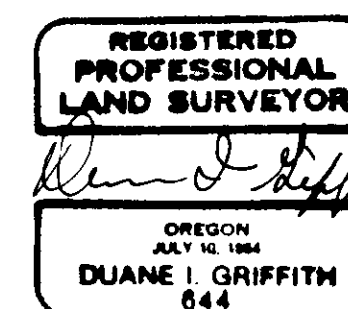
Section 16
The Northwest 1/4
The North 1/2 of the Southwest 1/4

SURVEYORS STATEMENT

This survey was begun by retracing the exterior lines of section 16 as shown. The area of the North 1/4 corner has been logged. I find no evidence of the original GLO corner. The topo call East of the corner is very relevant to the position I determined by single proportionate measurement. The South 1/4 corner area has been logged several times. I find no evidence of the original GLO corner. I placed the corner by single proportionate measurement. I subdivided the section as shown. I retraced the line between section 17 and section 20 as shown. The skew of this line indicates a stub from one side or the other in the original G.L.O. survey. The topo calls are inconclusive. Both possible positions for the 1/4 corner were searched to no avail. The entire area has been logged. I located the 1/4 corner by single proportionate measurement. I also find some possible timber trespass in section 16 along the South line of the North 1/2 of the Southwest 1/4. I find no unusual conditions on this survey.

Duane I. Griffith
 Duane I. Griffith, OPLS 644
 Baggett-Griffith and Associates
 2006 Adams Avenue
 LaGrande, Oregon

November 21, 1989



LEGEND

- Found brass cap monument set by William Hanley, OPLS 1639, in 1983.
- ⊙ Found original GLO survey evidence and set 2 1/2" x 30" aluminum monument.
- Set 2 1/2" x 30" aluminum monument at position determined by survey.
- () GLO record bearing and distance
- +— National Forest boundary line posted to standard.
- Existing fence line
- P Privately owned land
- NF National Forest land
- M-11 Alpha-numeric designation

NOTE: For monumentation information, see monumentation sheets filed separately.

Sheet 2 of 2

The information within these boxes is for U.S. Forest Service record keeping purposes only.	
PROJECT NAME Cantrell Cadastral Survey (Phase III)	Examined and accepted for the U.S. Forest Service this 1 st day of January, 1989. <i>Richard A. Chubb</i> C.O.R.
CONTRACT NUMBER 53-04M3-8-03324	I certify that this survey was performed at the request of the Willowa-Whitman National Forest.
FIELD BOOKS Traverse book numbers 1, 2, 3, 4, 5, and 6. Remonumentation book Numbers 2 and 3.	NATIONAL FOREST SUPERVISOR <i>William K. Lutz</i> 11/4/89 SIGNATURE DATE

Sheet 2 of 2

UNION COUNTY SURVEYOR
 MAP OF SURVEY
 Date Received 1-8-90
 Date Filed 1-8-90
 By R. ROBINSON, Deputy
 File No. 26-89

BAGETT - GRIFFITH & ASSOCIATES LaGrande, Oregon	
Location of the National Forest Boundary within Sections 16 and 17 Township 2 South, Range 37 East of the Willamette Meridian UNION COUNTY, OREGON	
SURVEYED FOR	Willowa-Whitman National Forest
SURVEYED BY	d i g
Scale: 1" = 600'	Drawn by: d i g
	9-11 / 89
	Nov. 1989

IDAHO BLUEPRINT & SUP. CO. INC. - BOISE, IDAHO 83721

SURVEY NO. 26-89