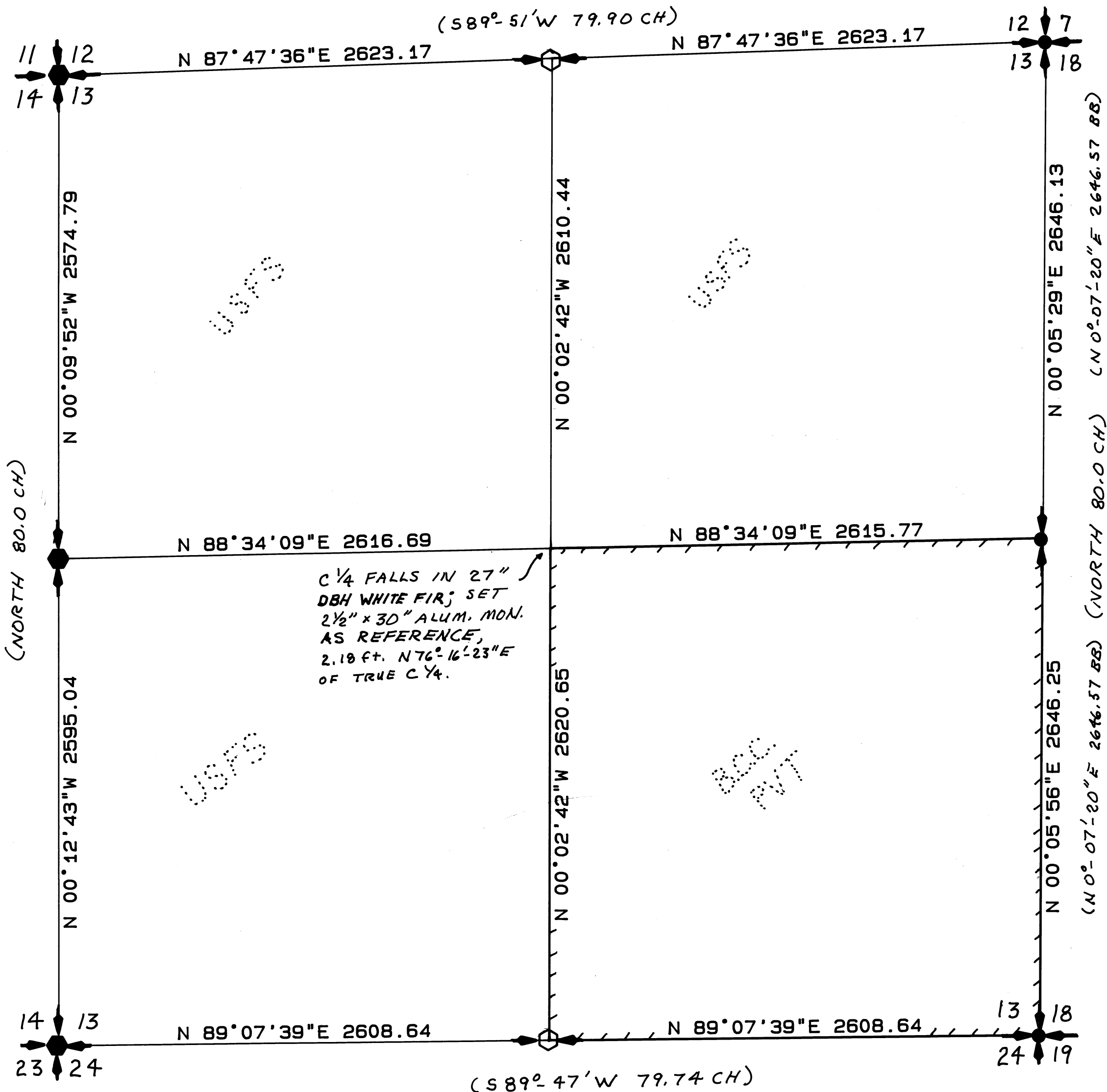


24-89

BASIS OF BEARINGS:

SOLAR OBSERVATION AT
NE COR SEC 13
MAGNETIC DECL. 20 E.



SEC. 13, T. 4N., R. 39E., W. M.

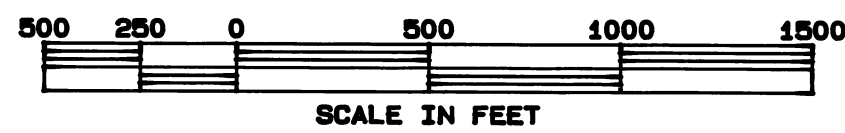
NATIONAL FOREST LANDS

THE NE1/4; THE NW1/4; THE SW1/4;
ALL WITHIN SECTION 13,
T. 4N, R. 39E., W.M.

HISTORY OF SURVEYS

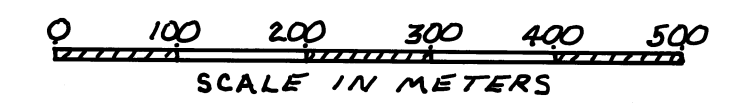
EAST BOUNDARY OF TOWNSHIP 4N, RANGE 39E, W.M.
ESTABLISHED BY RUFUS S. MOORE UNDER GLO CONTRACT
NUMBER 437, DATED JUNE 3, 1882.
INTERIORS OF TOWNSHIP 4N, RANGE
39E, W.M. ESTABLISHED BY FRANK W. CAMPBELL
UNDER GLO CONTRACT NUMBER 498 DATED
MARCH 10, 1884.
NE SECTION CORNER SEC 13 SET BY RALPH P.
THOMPSON FROM GLO EVIDENCE IN JUNE 1973.
SE SECTION CORNER AND EAST 1/4 CORNER OF SEC. 13
SET BY BARRY B. BARBOUR AT SINGLE PROPORTIONATE
MEASUREMENT IN NOVEMBER 1978. SURVEY NO. 144-78.

SURVEY PERFORMED USING WILD T1
THEODOLITE AND WILD DI-4L EDM
TO WILD TARGETS AND PRISMS.



LEGEND

- FOUND GLO CORNER ACCESSORIES AND SET 2.5 INCH BY 30 INCH ALUM. MON.
- SET 2.5 INCH DIA. BY 30 INCH ALUM. MON. AT SINGLE PROP. POSITION
- PROPERTY LINE ESTABLISHED AND POSTED
- () ● SURVEY DATA OF RECORD



EXAMINED AND ACCEPTED FOR THE U.S. FOREST SERVICE
THIS 7TH DAY OF SEPTEMBER 1989.
James J. Layland COR.

I CERTIFY THAT THIS SURVEY WAS PERFORMED AT THE REQUEST
OF THE UMATILLA NATIONAL FOREST SUPERVISOR
James A. Lawrence 9/12/89
SIGNATURE DATE

NOTE: CERTIFIED RECORD OF LAND CORNER MONUMENTATION FILED WITH UNION COUNTY SURVEYOR

COUNTY SURVEYOR'S OFFICE
RECEIVED 10-2-89
FILED FOR RECORD THIS 11TH DAY OF OCTOBER, 1989,
AS SURVEY NUMBER 24-89
RECORDS OF UNION COUNTY, STATE OF OREGON.
Gary Delaney
DEPUTY SURVEYOR COUNTY SURVEYOR

SURVEYOR'S CERTIFICATE
I, EDWIN A. STRYKER, REGISTERED LAND SURVEYOR IN THE
STATE OF OREGON, HEREBY CERTIFY THAT THIS PLAT AND THE
NOTES HEREON, OR ATTACHED, ARE A TRUE AND CORRECT
REPRESENTATION OF THE SURVEY I MADE IN JUNE 1989,
AT THE REQUEST OF THE USDA FOREST SERVICE IN ACCORDANCE
WITH THE STATUTES OF THE STATE OF OREGON AND THE
ARTICLES OF MY CONTRACT NUMBER 00-04R3-9-1.

REGISTERED
PROFESSIONAL
LAND SURVEYOR
Edwin A. Stryker
JULY 15, 1982
EDWIN A. STRYKER
2080

STRYKER-KIMBELL ASSOCIATES
RT 1 BOX 316 LEWIS CREEK ROAD
SUMMERVILLE, ORE 97876
(503) 534-6905
DRAWN HP7575A JOB NO 0588130439 DATED 8-8-89
CHECKED BY EAS SCALE 1 in. = 500 SHEET 1 OF 1

REFER TO NARRATIVE DRAWER 1/15

24-89

Stryker-Kimbell Associates
Pte. 1 Box 316
Lewis Creek Road
Summerville, Oregon 97876
503-534-6905
12 August, 1989

Office of County Surveyor
Union County
LaGrande, Oregon

NARRATIVE per USDA FS Contract 100-04B3-S-1 JERMINA CADASTRAL SURVEY

This survey was performed at the request of the USDA Forest Service, the Umatilla National Forest, headquartered in Pendleton, Oregon.

This survey was performed within Township 4 North, Range 39 East, W.M. as a subdivision of section 13 to monument and establish the ownership and the boundaries of the public lands within said section, Union County, Oregon.

The basis of bearing was a solar observation taken from the northeast section corner monument of said section 13, on 31 May 1989.

The survey was performed using a Wild T1 micrometer theodolite and a Wild DI-4L electronic distance meter turned to Wild targets and prisms. A closed random traverse was used to tie all controlling monuments within said section meeting precision standards of one in ten thousand prior to angle balances. A least squares adjustment procedure was used. True line closed loop traverses were performed to establish property lines, and offset methods were used to set steel fence posts along the true property lines. These also met the same precision standards noted above.

Two lost corners could not be recovered during this survey; the NE/4 corner common to sections 12 and 13, and the SE/4 corner common to sections 13 and 24. After extensive search failed to recover these GLO corners, they were set using single proportionate measure from found and tied controlling section corners to the east and west of both positions. The NW section corner, the NE/4 corner, and the SW section corner all of said section 13 were recovered from found original accessories. They were re-established based on distance and bearing information from GLO notes using compass and chain.

When posting the property boundaries, timber cutting encroachment was apparent along the north line, the east line, and the south line of the SE one-quarter of the section. The cutting lines were blazed and are well healed; the encroachments are not new, and generally are less than 20 feet.

UNION COUNTY SURVEYOR
Date Received <u>10-2-89</u>
Date Filed <u>10-11-89</u>
By <u>G. LANGLITZ</u> NARRATIVE DRAWER
File No. <u>1/15</u>

Certified,

Edwin A. Stryker
Edwin A. Stryker
Oregon PLS 2060

REFER TO SURVEY 24-89