

NARRATIVE

This survey was made to determine the location of the section corner to sections 19-24-25-30, and the 1/4 corner common to section 19 and 24, all on the Range Line between Range 39 & 40 E. T 4 S WM. These corners were set by Timothy W. Davenport in 1863. There was a retracement by J.W. Kimball in 1889, from the Northwest corner of Section 19, South to the Southwest corner of Section 19 (Survey Number 12 on page number 148 of the old book of surveys). He did not mention what type of corner monument he found at these corners. His distance between these corners was 802.5 chains, (5296.30 feet). I found the distance to be 5300.04 feet, which is very harmonious. I found no other surveys in this area which would shed light on this corner. In 1879 Hannah's Addition was surveyed and recorded. The general description on the plat states in part "and is located in the SW 1/4 of the NW 1/4 of Section 19, T4S, R40E, W.M. and lies South of the Town of West Union. The lots, blocks, alleys and streets are laid out to correspond with Union". In 1910 Union Orchard Tracts was surveyed and platted by Arthur Curtis, Union County Surveyor. Mr Curtis states he set several "iron pins" on his plat. I retraced him on another survey a short time ago, and he called "iron pins" on that survey also. I found 1 1/2" galvanized iron pipes on that retracement.

In the mid and late 1970s I made several lot surveys in Hannah's Addition and the adjacent areas. I also tied several intersection monuments during the layout of sewer lines for construction. I made a very detailed study of Hannah's Addition and adjacent areas to determine the position of this subdivision. Based on found intersection monuments, lines of occupancy, street locations, fence lines discussions with local residents. I placed Hannah's Addition as shown on the annexed plat, titled "Exterior lines of Hannah's Addition". I find this position fits existing conditions very well.

I commenced this survey by tying fence lines in the area of Union Orchard Tracts. A study of his information resulted in a locate to search for the monuments of record. At the center south call of Orchard Tracts, I found a 1-1/2" X 30" galvanized pipe leaning against a fence corner post, 3 feet from the probable location. The pipe appears to have been recently excavated. At the center west call, of Orchard Tracts I found a 1-1/2" X 14" galvanized pipe lying nearly flat under the sod. This pipe was approximately 5 feet NE of the probable position. At the NE corner I found a 2-1/2" X 14" galvanized pipe approximately 8' below the surface in it's original condition. Based on the pipes, fences, and plat record I determined the position for the corner to sections 19-24-25 & 30. This is in the center of a road, which has been ditched and surfaced with gravel. I had an area, 10 feet in diameter around the determined section corner position, excavated to a depth of 4 feet with a backhoe. We found a stone with no visible marks. I do not believe it to be the stone called for. I set a monument in the position I determined for the section corner stated above.

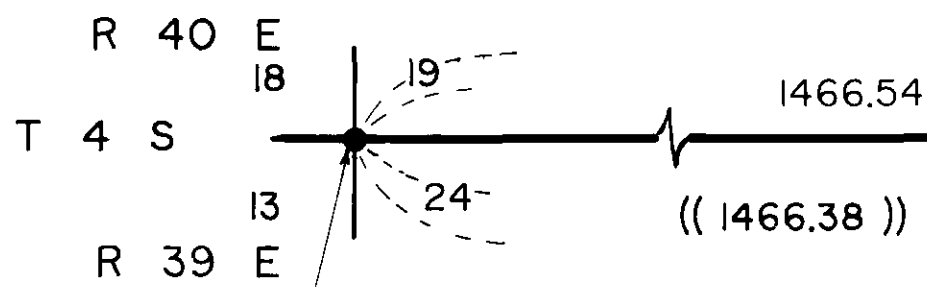
Mr. Merlyn Langford, a long time resident in the area, pointed out a 4" square concrete post in his pasture. He did not know the origin of this post. He said it had been there as long as he could remember, 50 years or more. The area south and east of this post has obviously been located on the basis of this point. Fence lines, street lines, and other lines of occupancy fit very well to the location of this post. The relative position of this post to the section corner, I discussed above, and the section to the north, (sections 13-18-19-24), is well within the limits I would expect. I can find no reason not to accept this post as the best evidence of the position of this 1/4 corner. I set a monument in place of this post.

The SW corner of Hannah's Addition as I placed it; discussed above, is approximately 32 feet north and 9 feet west of this 1/4 position. This will result in some overlaps and gaps in Hannah's Addition.

Duane I. Griffith, OPLS 644

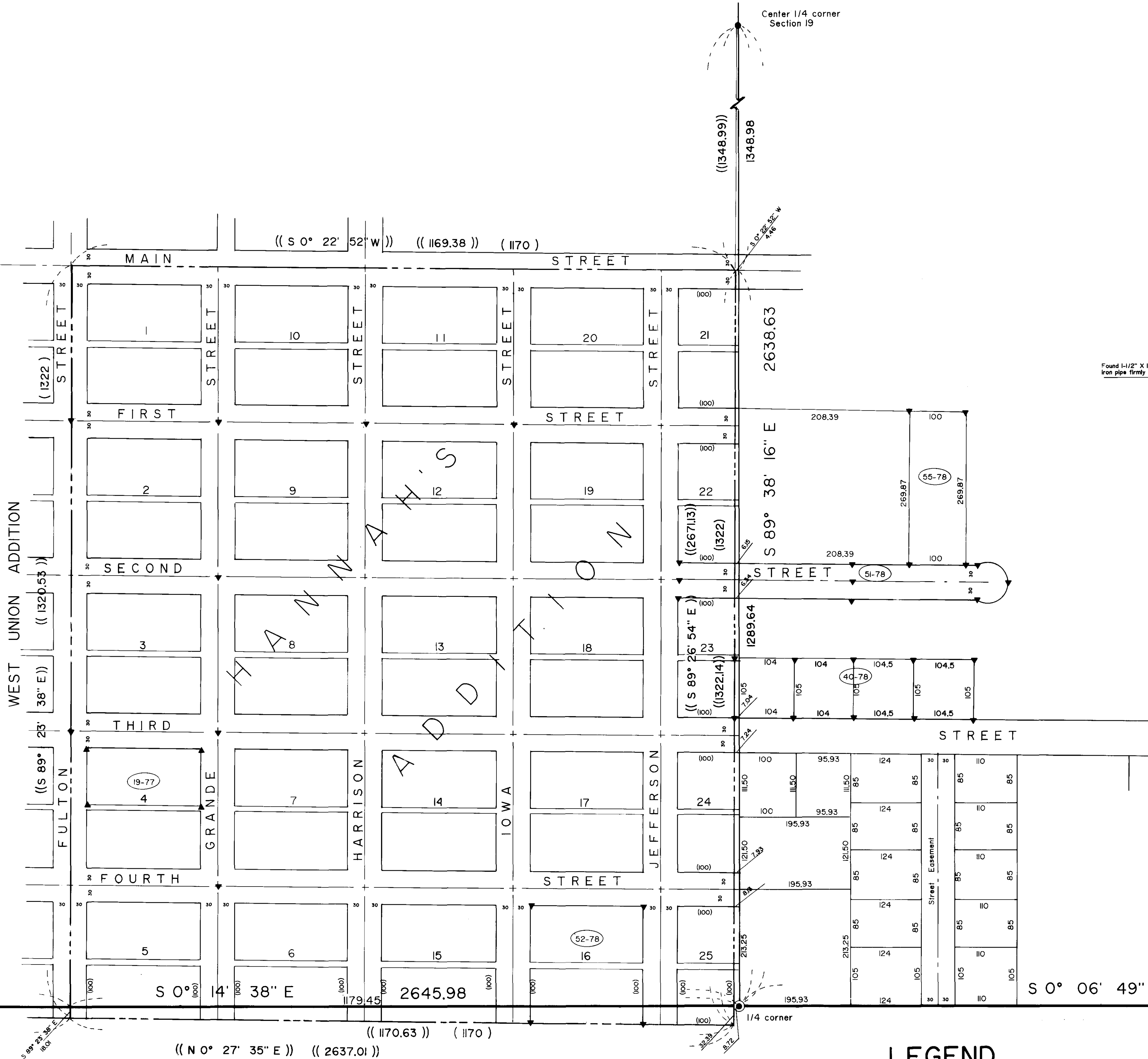
REGISTERED PROFESSIONAL LAND SURVEYOR

DUANE I. GRIFFITH 644

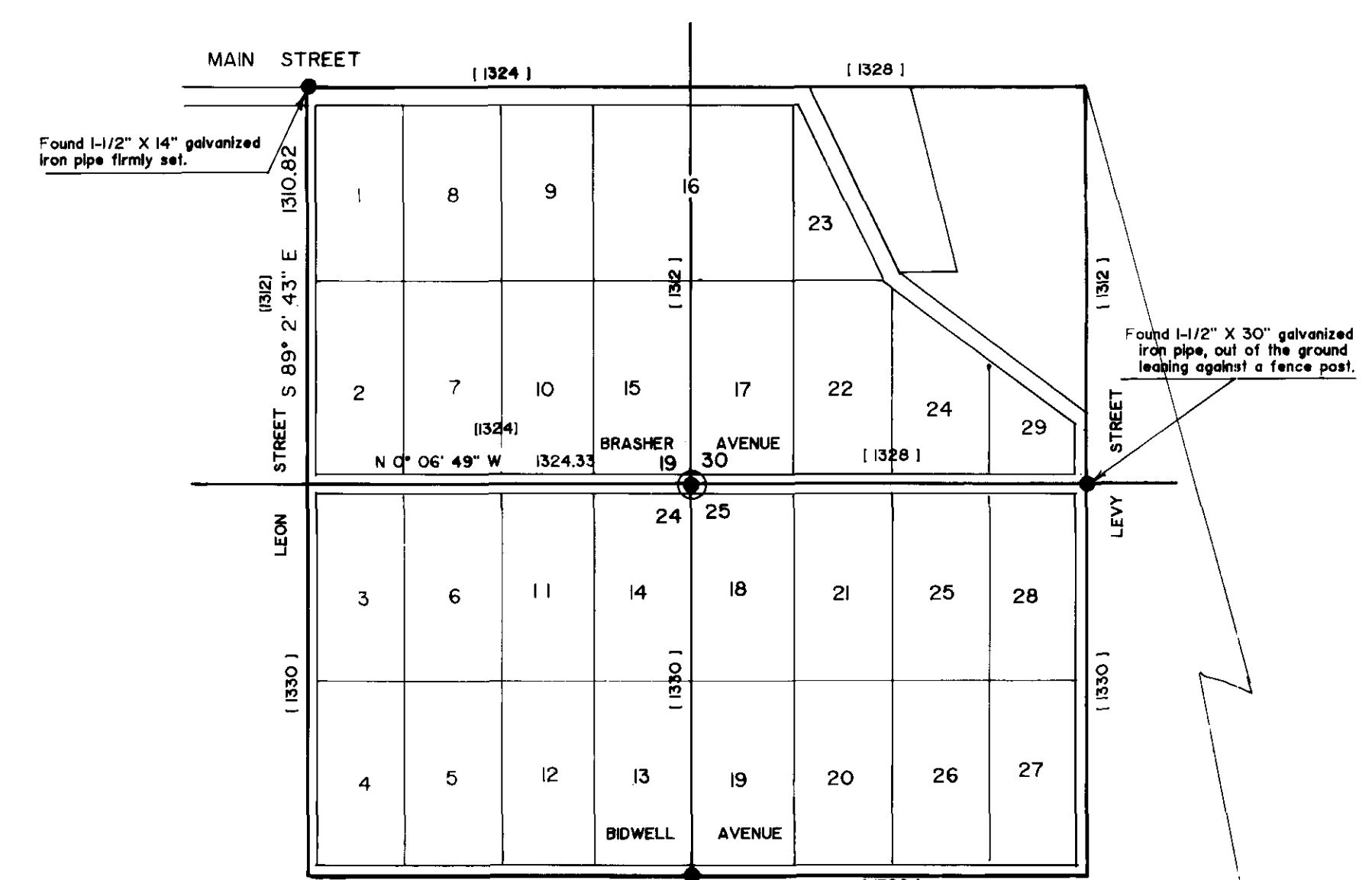


BASIS OF BEARING

Solar observations taken at the NW corner of section 18, T 4 S, R 40 E WM



UNION ORCHARD TRACTS



Scale: 1" = 500'

REFERENCE MATERIAL

- Hannah's Addition Plat
West Union Addition Plat
Union Orchard Tracts Plat
Map of Survey number 14-71
Map of Survey number 33-77
Map of Survey number 40-78
Map of Survey number 52-78
Map of Survey number 55-78
Map of Survey number 51-78

- Street centerline
Exterior line of Hannah's Addition
Range line, Section line
Center of section line
Found monument, as noted
Monument of record, record position used, monument not visited
Survey of record, County survey record, number.

LEGEND

- Record distance from Hannah's Addition Plat, if other than true.
Record distance from Union Orchard Tracts Plat.
Record bearing and distance based on my location of Hannah's Addition as stated in the narrative hereon.

UNION COUNTY SURVEYOR
Date Received 9-29-89
Date Filed 10-12-89
By G. LANGLITZ
File No. Z3-89

BAGETT - GRIFFITH & ASSOCIATES
LaGrande, Oregon
MAP OF SURVEY
The Range Line between RANGE 39 and 40 EAST T 4 S, WM
UNION COUNTY, OREGON
SURVEYED FOR David Roberts
SURVEYED BY dig
Scale: 1" = 100' or as noted
Drawn by: dig