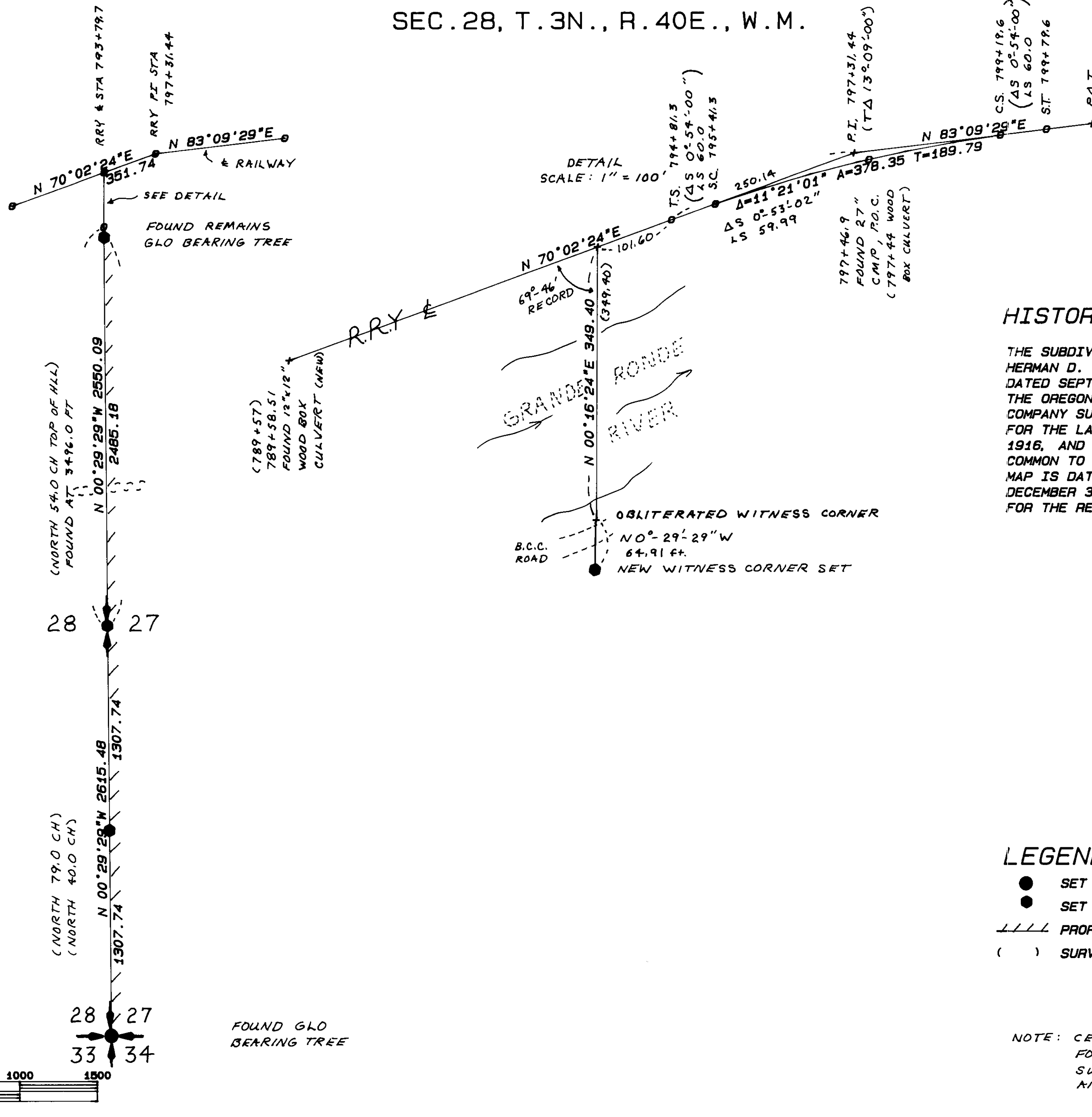
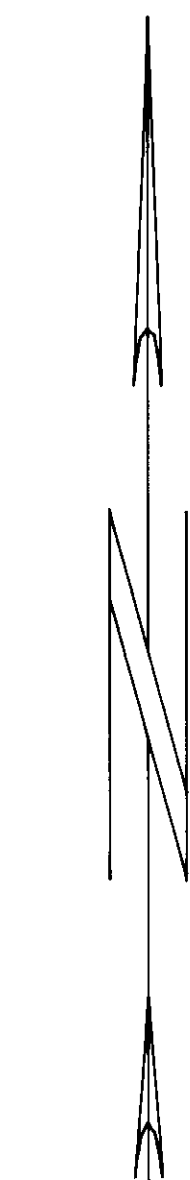


SEC. 28, T. 3N., R. 40E., W. M.

BASIS OF BEARINGS:

SOLAR OBSERVATION NEAR N1/16 POSITION  
MAGNETIC DECL. 19 E.



HISTORY OF SURVEYS

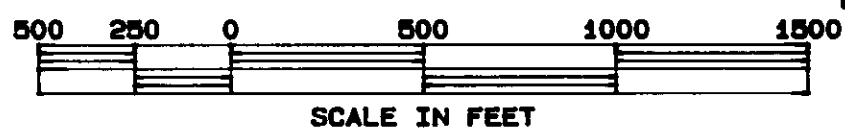
THE SUBDIVISIONAL LINES WERE ESTABLISHED BY HERMAN D. GRADON UNDER GLO CONTRACT NUMBER 517 DATED SEPT. 30, 1884 AND APPROVED FEB. 3, 1885. THE OREGON-WASHINGTON RAILROAD AND NAVIGATION COMPANY SURVEYED THE RIGHT-OF-WAY AND TRACK FOR THE LA GRANDE TO JOSEPH BRANCH LINE IN 1916, AND FOUND AND TIED THE WITNESS CORNER COMMON TO SECTIONS 21, 22, 27 AND 28. THE TRACK MAP IS DATED JUNE 30, 1916 AND WAS REVISED ON DECEMBER 31, 1927. THE TRACK MAP IS THE BASIS FOR THE RESTORATION OF THE OBLITERATED CORNER.

LEGEND

- SET 3.5-IN ALUM CAP IN 0.75-IN IRON PIPE
● SET 2.5-IN. DIA. BY 30-IN. ALUM. MON.
////// PROPERTY LINE ESTABLISHED AND POSTED
( ) SURVEY DATA OF RECORD

NOTE: CERTIFIED LAND CORNER RECORDATION FORMS FILED WITH UNION COUNTY SURVEYOR FOR ALL CORNERS FOUND AND SET.

SURVEY PERFORMED USING WILD T1 THEODOLITE AND WILD DI-4L EDM TO WILD TARGETS AND PRISMS.



COUNTY SURVEYOR'S OFFICE

Rec'd 8-30-89
FILED FOR RECORD THIS 1st DAY OF SEPTEMBER, 1989, AS SURVEY NUMBER 19-89 RECORDS OF UNION COUNTY, STATE OF OREGON.

Deputy Surveyor and County Surveyor signatures and titles.

SURVEYOR'S CERTIFICATE

I, EDWIN A. STRYKER, REGISTERED LAND SURVEYOR IN THE STATE OF OREGON, HEREBY CERTIFY THAT THIS PLAT AND THE NOTES HEREON, OR ATTACHED, ARE A TRUE AND CORRECT REPRESENTATION OF THE SURVEY I MADE IN JULY-AUG. 1989, AT THE REQUEST OF JACK M. PATTEN IN ACCORDANCE WITH THE STATUTES OF THE STATE OF OREGON AND THE ARTICLES OF MY CONTRACT.

REGISTERED PROFESSIONAL LAND SURVEYOR

Edwin A. Stryker signature and registration details.

STRYKER-KIMBELL ASSOCIATES

RT 1 BOX 316 LEWIS CREEK ROAD SUMMERVILLE, ORE 97876 (503) 534-6905

Table with 3 columns: DRAWN HP7575A, JOB NO 389034028, DATED 8-28-89; CHECKED BY EAS, SCALE 1 in. = 500; SHEET 1 OF 1