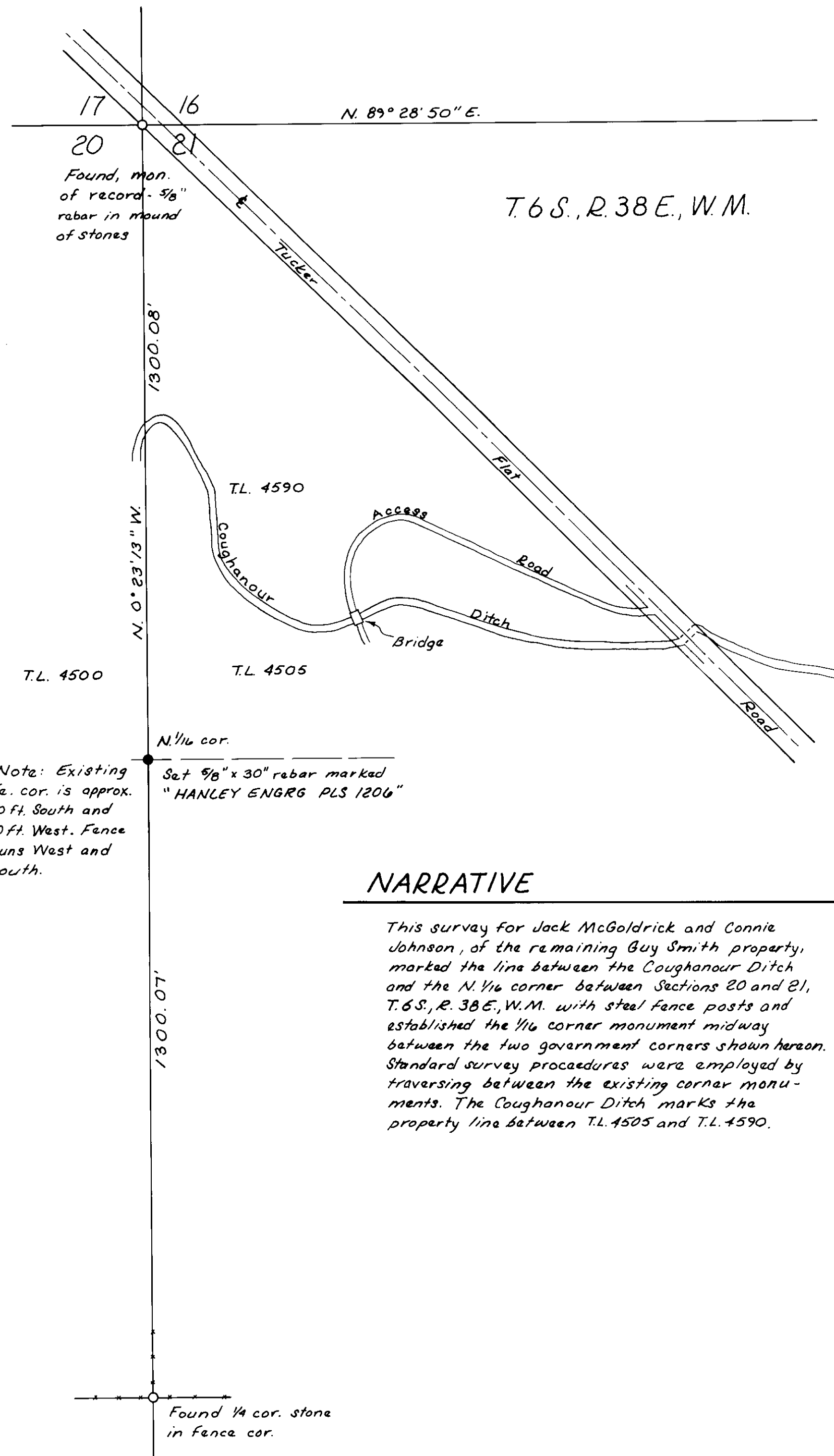


BASIS OF BEARINGS BY SOLAR OBSERVATIONS FOR GUY SMITH 1978 SURVEY.



Note: Existing fe. cor. is approx. 10 ft. South and 10 ft. West. Fence runs West and South.

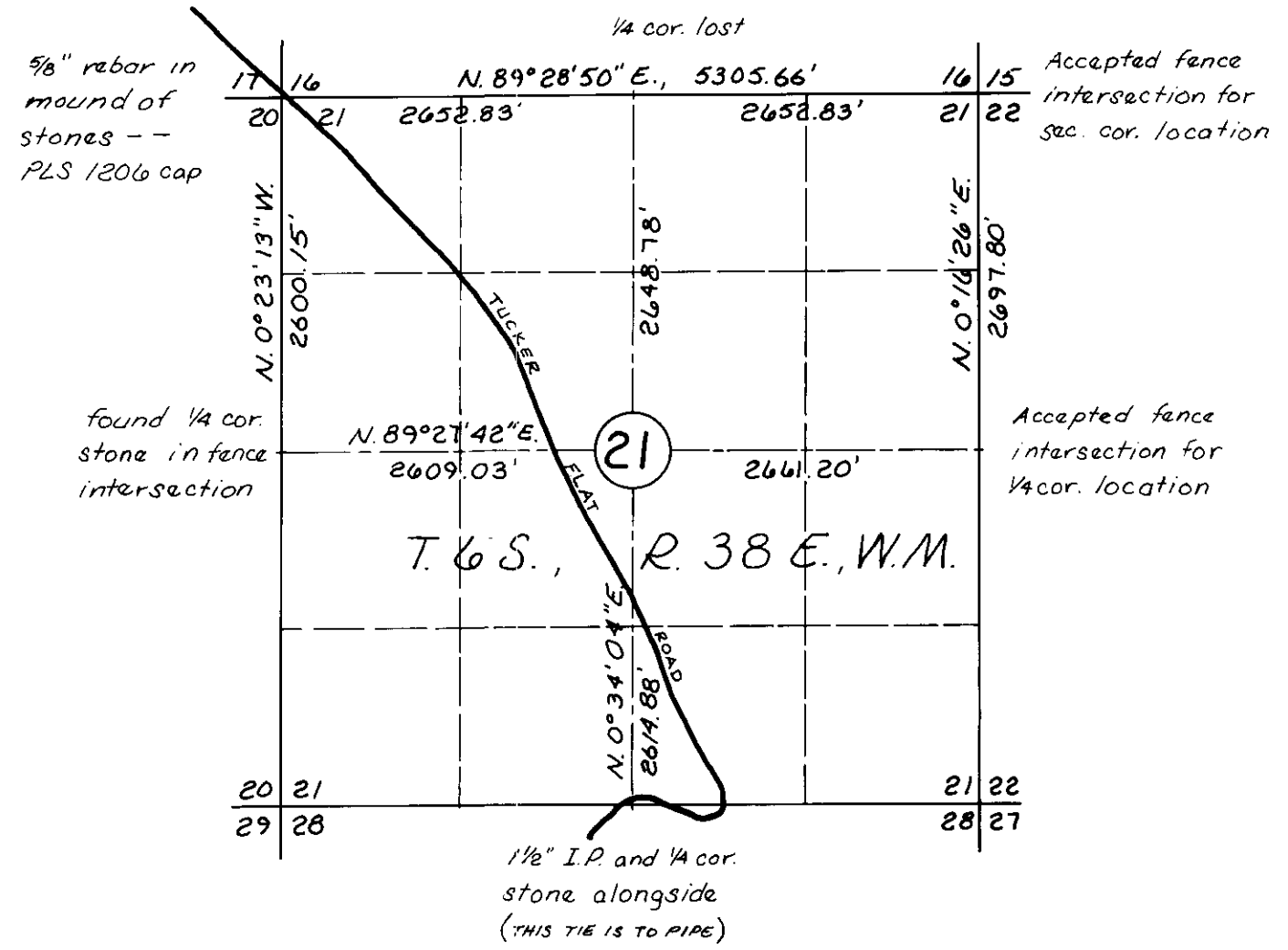
Set 9/8" x 30" rebar marked "HANLEY ENGRG PLS 1206"

**NARRATIVE**

This survey for Jack McGoldrick and Connie Johnson, of the remaining Guy Smith property, marked the line between the Coughanour Ditch and the N. 1/4 corner between Sections 20 and 21, T. 6 S., R. 38 E., W. M. with steel fence posts and established the 1/4 corner monument midway between the two government corners shown hereon. Standard survey procedures were employed by traversing between the existing corner monuments. The Coughanour Ditch marks the property line between T.L. 4505 and T.L. 4590.

**LOCATION MAP**

1" = 1320'



This Location Map and Partial Section 21 subdivision is reproduced from the 1978 Guy Smith survey. The two monuments along the West line of the NW 1/4 were found as described on that map of survey.

**MAP OF SURVEY**

FOR JACK MCGOLDRICK and CONNIE JOHNSON

JUNE 15, 1989

SCALE: 1" = 200'

**UNION COUNTY SURVEYOR**  
 Date Received 7-25-89  
 Date Filed 8-8-89  
 By G. LANGUTZ, Deputy  
 File No. 14-89

**REGISTERED PROFESSIONAL LAND SURVEYOR**  
*James D. Hanley*  
**OREGON**  
 SEPTEMBER 11, 1977  
 JAMES D. HANLEY  
 1206  
 Baker, Oregon