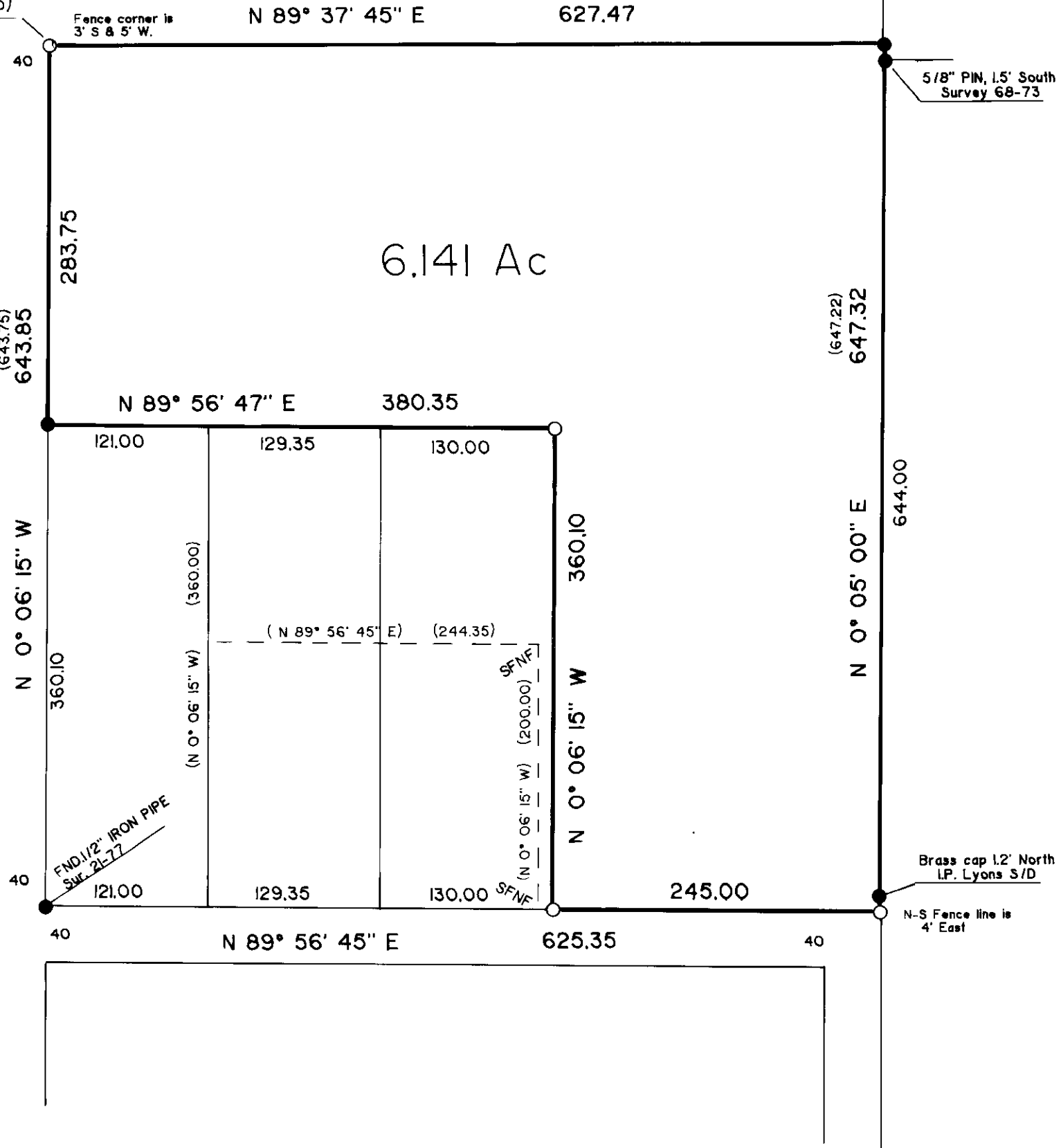


Based on map of survey 21-77, the NW corner of section 4, T 3 S, R 38 E is 652.02 north and 690.85 west (N 46° 39' 23 W, 949.95)



BASIS OF BEARING

The forward bearing as published by the U.S.C and G.S. from Δ College to Δ Valley, dated 1946

REFERENCE MATERIAL

MAP OF SURVEY NO. 21-77
 DEED DESCRIPTION
 MF 69466
 MF 121440
 MF 116954

NARRATIVE

This survey was made at the request of Carl Peterson to locate the parcel hereon shown. In 1977, made survey number 21-77, finding and setting the corners as shown, I marked parcels in the SW part of this area, which have been changed. I found all but the NW corner of the perimeter; which is now in the edge of a plowed field. I replaced this pin at record bearing and distance from found corners. I set pins as indicated. This survey is entirely based on survey no. 21-77.

LEGEND

- Found 5/8" pin set in survey 21-77, unless otherwise noted.
- Set 5/8" X 30" pin with plastic cap marked, BGA SURVEY MARKER
- () Record bearing and distance, if other than measured.
- SFNF Pin set in 21-77, searched for, not found.

REGISTERED
 PROFESSIONAL
 LAND SURVEYOR

OREGON
 JULY 10, 1964
 DUANE I. GRIFFITH
 644

UNION COUNTY
 SURVEYOR

Map Received 4-26-89
 Map Filed 5-15-89
 By G. LANGRISH, DEPUTY
 File No. 7-89

BAGETT - GRIFFITH & ASSOCIATES LaGrande, Oregon MAP OF SURVEY		
A Parcel in the NW 1/4 of the NW 1/4 Section 4, T 3 S, R 38 E, WM UNION COUNTY, OREGON		
SURVEYED FOR	CARL PETERSON	
SURVEYED BY	dig	4 - 1989
Scale: 1" = 100'	Drawn by: dig	4 - 1989