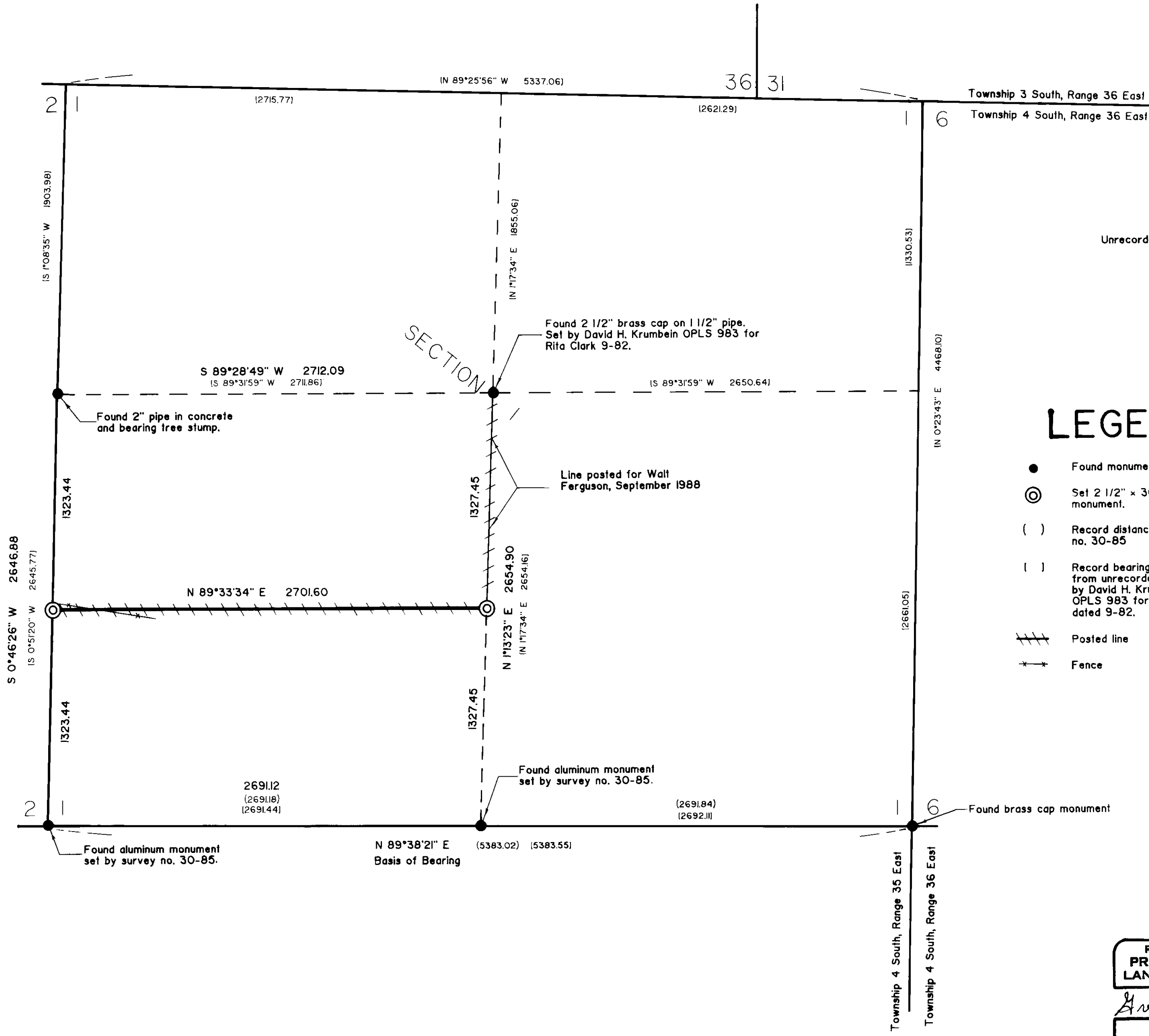




### BASIS OF BEARING

The bearing along the south line of section 1 Township 4 south, Range 35 east of the Willamette Meridian, as established by survey no. 30-85.



### REFERENCE MATERIAL

Unrecorded survey by David H. Krumbein OPLS 983 for Rita Clark dated 9-82.  
Survey no. 30-85

### LEGEND

- Found monument as noted.
- ⊙ Set 2 1/2" x 30" aluminum monument.
- ( ) Record distance from survey no. 30-85
- [ ] Record bearing and distance from unrecorded survey by David H. Krumbein OPLS 983 for Rita Clark dated 9-82.
- /// Posted line
- Fence

### NARRATIVE

This survey was ordered by Glenn Hall. The purpose of this survey was to establish and mark the north line of the south one-half of the southwest one-quarter of section 1. The south line of section 1 was monumented in 1985 by survey no. 30-85. I also obtained a copy of an unrecorded survey, completed in October 1982 for Rita Clark, of section 1 by David H. Krumbein OPLS 983, which sets the center of section 1 and documents the west one-quarter corner of section 1. I base my survey on the monuments set along the south line of section 1, and I accept the center one-quarter corner and the west one-quarter corner as established by Krumbein. I establish the center south one-sixteenth corner midway between the center one-quarter corner and the south one-quarter corner of section 1. I establish the south one-sixteenth corner between sections 1 and 2 midway between the two monumented corners. I find that the distance from the west one-quarter corner to the southwest corner of section 1 differs by about 1 foot, however the corner tied by Krumbein was torn out of the ground prior to our survey in 1985, and we were unaware of his work. We established this corner from the existing bearing tree stumps, which explains the foot discrepancy from Krumbein's position. I find that the fences in this area along the line we are posting are generally in excess of 100 feet south of our monumented line, with the exception of the area of the south one-sixteenth corner between sections 1 and 2. I find no other problems with this survey.

**UNION COUNTY SURVEYOR**

Date Received 10-6-88  
 Date Filed 10-17-88  
 By G. LANGRISH, DEPUTY  
 File No. 37-88

REGISTERED PROFESSIONAL LAND SURVEYOR

*Gregory T. Blackman*

OREGON  
 JULY 13, 1973  
 GREGORY T. BLACKMAN  
 991

<b>BAGETT - GRIFFITH &amp; ASSOCIATES</b> LaGrande, Oregon		
Map of Survey		
Location of north line of the south one-half of the southwest one-quarter of section 1 Township 4 south, Range 35 east of the Willamette Meridian.		
UNION COUNTY, OREGON		
SURVEYED FOR	Glenn Hall	
SURVEYED BY	GTB	9-88
Scale: 1" = 500'	Drawn by: JPP	9-88