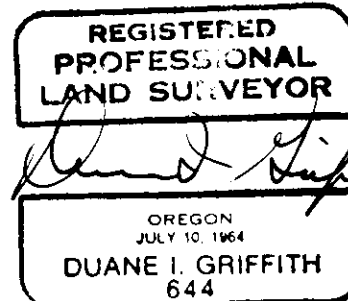


SURVEYOR'S STATEMENT

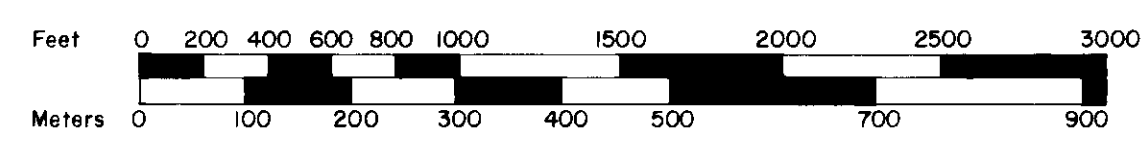
I, Duane I. Griffith, Registered Land Surveyor in the State of Oregon, hereby certify that this plat and the notes hereon, or attached, are a true and correct representation of the survey I made in July and August, 1988, at the request of the USDA Forest Service, in accordance with the statutes of the State of Oregon and with the articles of my contract.

The basis of bearing used in this survey was taken at 17°45'11" West longitude. I made a solar observation at the Southwest corner of section 15 Township 3 South, Range 40 East of the Willamette Meridian, which is at 17°48'26" West longitude, for a check on this basis. When I apply the convergence I find this bearing to be within 10 seconds. I find no unusual conditions in this survey.

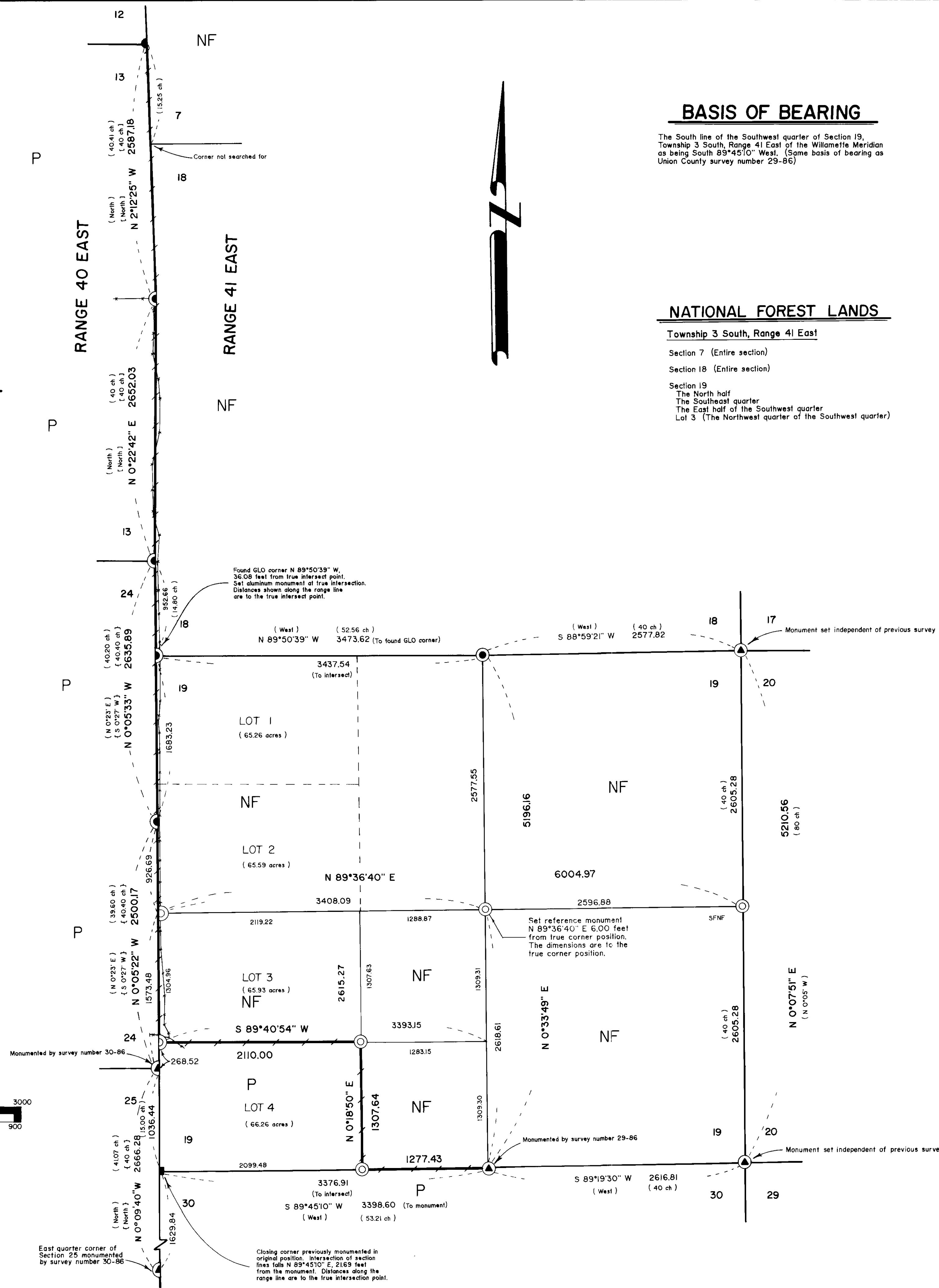
Duane I. Griffith
 Duane I. Griffith, OPLS 644
 Baggett, Griffith and Associates
 2006 Adams Avenue
 LaGrande, Oregon



Scale: 1" = 600'



1 Meter = 3.2808333 Feet



BASIS OF BEARING

The South line of the Southwest quarter of Section 19, Township 3 South, Range 41 East of the Willamette Meridian as being South 89°45'10" West. (Same basis of bearing as Union County survey number 29-86)

NATIONAL FOREST LANDS

- Township 3 South, Range 41 East
- Section 7 (Entire section)
- Section 18 (Entire section)
- Section 19
 - The North half
 - The Southeast quarter
 - The East half of the Southwest quarter
 - Lot 3 (The Northwest quarter of the Southwest quarter)

HISTORY OF SURVEYS

- The East line of Section 13, Township 3 South, Range 40 East was originally established by David T. Thompson under GLO contract number 103, dated September 3, 1863.
- The East line of Sections 24 and 25, Township 3 South, Range 40 East was originally established by W.B. Barr under GLO contract number 355, dated June 14, 1880.
- The line between Township 3 South, Ranges 40 and 41 East was retraced and Township 3 South, Range 41 East was subdivided by Alonzo Gesner under GLO contract number 683, dated June 7, 1898.
- The Northeast corner of Section 13, Township 3 South, Range 40 East was remonumented from original GLO survey evidence by Duane I. Griffith, OPLS 644 on Union County survey number 73-74.
- The closing section corner common to Sections 19 and 30, Township 3 South, Range 41 East was remonumented from original GLO survey evidence by Gary L. Langlitz, OPLS 1099 in 1983, as per Union County monumentation records.
- The South 1/4 corner of Section 19, Township 3 South, Range 41 East was remonumented from original GLO survey evidence by Duane I. Griffith, OPLS 644, on Union County survey number 29-86.
- The Northeast corner and the East 1/4 corner of Section 25, Township 3 South, Range 40 East was remonumented from original GLO survey evidence by Duane I. Griffith, OPLS 644, on Union County survey number 30-86.
- The Northeast and Southeast corners of Section 19, Township 3 South, Range 41 East was remonumented from original GLO survey evidence in 1986 by Duane I. Griffith, OPLS 644, as per Union County monumentation records.

LEGEND

- Found brass cap monument as per Union County monumentation records, set by Duane I. Griffith, OPLS 644, on Union County survey number 73-74
- Found brass cap monument as per Union County monumentation records, set by Gary L. Langlitz, OPLS 1099
- ▲ Found aluminum monument as per Union County monumentation records, set by Duane I. Griffith, OPLS 644, by survey indicated by each monument
- Found original GLO survey corner evidence and set a 2 1/2" x 30" aluminum monument
- Set 2 1/2" x 30" aluminum monument at position determined by survey
- [] Record bearing and distance of GLO survey by David T. Thompson
- { } Record bearing and distance of GLO survey by W.B. Barr
- () Record bearing, distance and acreage of GLO survey by Alonzo Gesner
- Posted National Forest boundary
- Existing fence line
- P Privately owned land
- NF National Forest land
- SFNF Corner searched for but not found

NOTE:
 For monumentation information, see monumentation sheets filed separately

NOTE:
 The information in these 2 boxes is for Forest Service record keeping purposes only.

UNION COUNTY SUPERVISOR

Date Received 9-15-88
 Date Filed 9-15-88
 By G. LANGLITZ DEPUTY
 File No. 33-88

PROJECT NAME
 Warm Creek Cadastral Survey
 CONTRACT NUMBER
 43-04M3-7-6103
 FIELD BOOKS
 Traverse Book Numbers
 1, 2, and 3
 Remonumentation Book
 Number 1

Examined and accepted for the U.S. Forest Service
 this 13 day of SEPT 1988.
Rachel A. Cheabur COR
 I certify that this survey was performed at the request of the WALLOWA-WHITMAN
 NATIONAL FOREST SUPERVISOR
D. M. Richardson 9/14/88
 SIGNATURE DATE

BAGETT - GRIFFITH & ASSOCIATES
 LaGrande, Oregon
 MAP OF SURVEY
 Location of the Wallowa-Whitman National Forest Boundary through Sections 7, 18 and 19, Township 3 South, Range 41 East of the Willamette Meridian
 UNION COUNTY, OREGON

SURVEYED FOR	Wallowa-Whitman National Forest
SURVEYED BY	d.i.g. 8-88
Scale: 1" = 600'	Drawn by: R.G.R. 8-88