

REFERENCE MATERIAL

MAPS OF SURVEY

1922 Remonumentation of LaGrande
SURVEY NUMBERS:

41	38-71A	123-78
47	43-71	30-79
53	94-71	40-79
54	95-71	54-79
55	23-72	56-80
56	89-72	69-80
57	20-73	19-81
66	23-73	29-82
69	63-73	30-82
70	35-74	41-82
74	3-75	5-84
76	4-76	6-84
143	16-76	4-86
1-71	109-77	32-86
10-71	90-78	23-79
11-66		61-81

PLATS

Chaplin's Addition
Coggan's Addition
Coggan's Second Addition
Grandy's Addition
Supplemental Plat of Grandy's 2nd Addition
Hanan's Addition
Highway Acres
Blumenstein's Subdivision
Carr's Subdivision
Kammerer's Subdivision
Lyman's Subdivision
Warren's Subdivision
Young's Subdivision

BASIS OF BEARING

The forward bearing as published by the U.S.C. and G.S. from Δ College to Δ Valley, dated 1946.



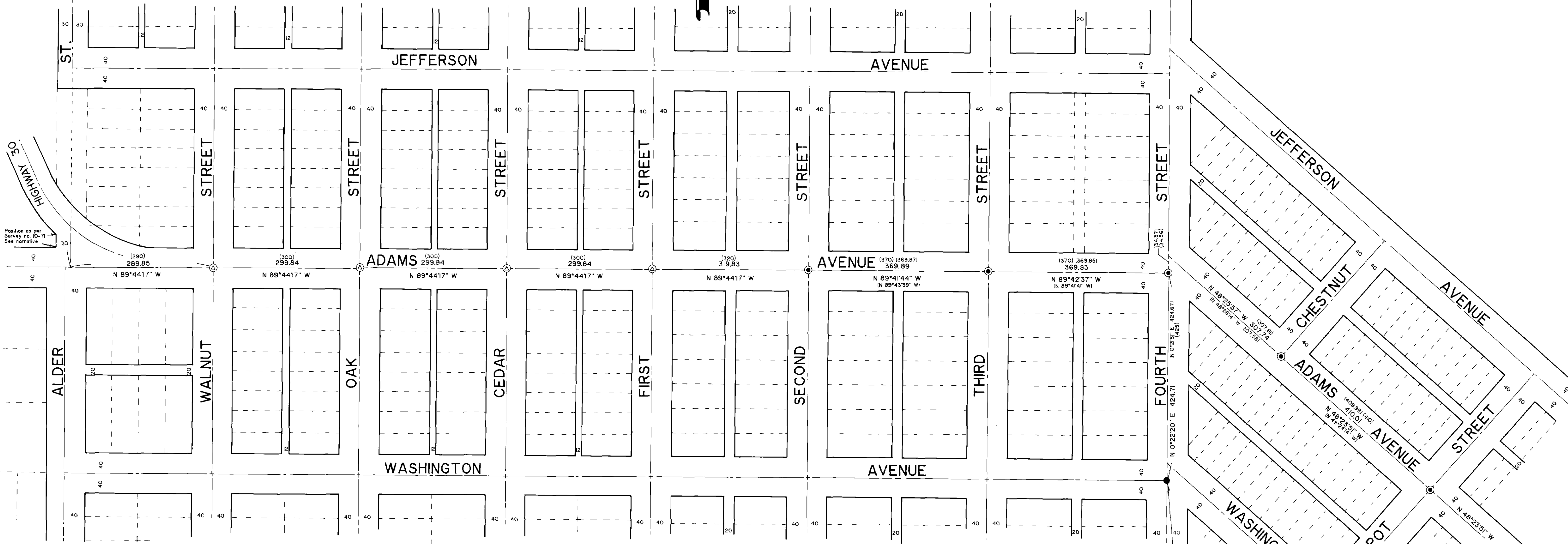
PALMER STREET

Found brass cap in water valve box.

N 0°2'55" E 108.619

Position as per Survey no. 63-73 See narrative

Highway 30



NARRATIVE

This survey was made at the request of the City of LaGrande to replace the monuments lost due to the resurfacing of Adams Avenue in 1966. Prior to construction the City Surveyor, Norman Paulus, OPLS 1952, referenced those intersections where monuments could be found. These are indicated in the legend.

In 1922 the City of LaGrande engaged the services of Mr. A.H. McLain to survey and monument the entire city. Fortunately this survey and monumentation was executed with a great deal of precision and documentation. In 1973, I was retained by the City of LaGrande to locate and remonument the intersections in the "downtown" area. Most of these were recovered McLain monuments. See map of survey number 63-73. There have also been many surveys in the intervening years. This material is used either directly or indirectly as listed under "reference material".

We began this survey by replacing the intersection points referenced by Mr. Paulus. At the remaining intersections to be monumented we put in a point using the record information of the surveys listed in "reference material". We then ran a traverse over the entire Avenue. As this was run, we located various pins, monuments, control points from previous traverses and surveys by our firm, and any other objects useful in relocating the Avenue. From this data we relocated the intersections as follows:

ALDER STREET AND ADAMS AVENUE
The intersection of Alder Street (North) and Adams Avenue was mathematically located on the basis of survey numbers 10-71 and 61-81, others were considered. Though the pin at the Northwest corner of this intersection, set in 1971 (Survey number 10-71) is destroyed, it was relied in a control survey in 1979 and the position is known.

SECOND STREET AND ADAMS AVENUE
This intersection was reestablished from references by Mr. Paulus. I then proportioned the intersections from Walnut Street to Second Street as hereon shown. I find this to be very harmonious with other surveys in the area.

SECOND AND ADAMS TO SPRUCE AND ADAMS
These intersections were remonumented in 1973 (survey number 63-73) and referenced by Mr. Paulus in 1966. We reestablished these from his references. I find the overall fit to be very good. The position of Fourth and Adams (East) was established by driving a line from the monument at Fourth and Washington (West) to the referenced position of Fourth and Adams (West) and extending this line the record distance of survey number 63-73.

MAPLE AND ADAMS TO CHERRY AND ADAMS
I found references to these intersections in the curbs and sidewalks while performing surveys in the area in 1971. Though these references are not shown on the 1922 map of Mr. McLain, I have proved that they do indeed reference these intersections. I reestablished these intersections on the basis of these reference marks as I found them in 1971.

ANGLE POINT BETWEEN WILLOW AND BALM STREETS
There is no call for a monument at this point on Adams Avenue on the 1922 survey. However, evaluation of numerous monuments found along Adams Avenue, on both sides, indicate there must be a slight angle to match existing pins. On the line between Coggan's and Hanan's Additions on the South side of Adams Avenue, I found a 1" pipe. This

is recorded on several surveys, though I do not know the origin. A detailed study of this area, using the surveys as shown, and others, indicate an angle point as hereon shown does in fact exist. I therefore monument this position.

BALM STREET AND ADAMS AVENUE
Mr. Paulus found crosses on the South side of Washington Avenue and on the North side of Adams Avenue, marking the centerline of Balm Street. He referenced the cross on Adams prior to resurfacing. I reestablished this monument at the intersection of the referenced centerline of Balm Street and the centerline of Adams Avenue between Cherry Street and the angle point between Willow and Balm Streets. I placed the intersection of Box Elder Street on this same centerline of Adams at the proportionate position between Balm and Cherry Streets, based upon distances shown on the 1922 map and survey number 41-82.

HIGHWAY AVENUE AND ADAMS AVENUE
I place this intersection on the Northerly extension of the centerline of Highway Avenue and the centerline of Adams as per survey numbers 94-71, 19-81 and 5-84. I place the intersections at Willow (North) and Hall Streets at record distances on this centerline of Adams.

It should be noted that for the intersections not referenced by Mr. Paulus prior to construction, the positions were determined from field notes of surveys performed by our firm. During the course of these past surveys, many survey monuments were located and considered in the placement of the intersection positions, none of which were monumented (with the exception of Maple and Cherry

Streets). To show all of the related monuments, and their relative positions to the intersections would be repetitious and extremely confusing if shown in totality on this plat. I have shown the key monuments and their positions with their relationship to Adams Avenue only. All surveys and plats considered are listed in the reference material for anyone who wishes to investigate further.

Duane I. Griffith
Duane I. Griffith, OPLS 644
Bagett, Griffith and Associates
2006 Adams Avenue
LaGrande, Oregon 97650

LEGEND

- ⊙ Set 2 1/2" brass cap on a 5/8" x 24" copperweld pin in concrete with brass cap marked BAGETT-GRIFFITH & ASSOC OPLS 644 with 1/8" diameter hole drilled at corner position. Set at position determined by survey (see narrative).
- ⊙ Set 2 1/2" brass cap on a 5/8" x 24" copperweld pin in concrete with brass cap marked BAGETT-GRIFFITH & ASSOC OPLS 644 with 1/8" diameter hole drilled at corner position. Set at position determined from references set by the City of LaGrande Surveyor.
- Found monument as described
- () Record information from survey no. 63-73.
- () Record information from 1922 McLain survey.

Found brass screw in lead plug in monument box.

REGISTERED PROFESSIONAL LAND SURVEYOR
DUANE I. GRIFFITH
644

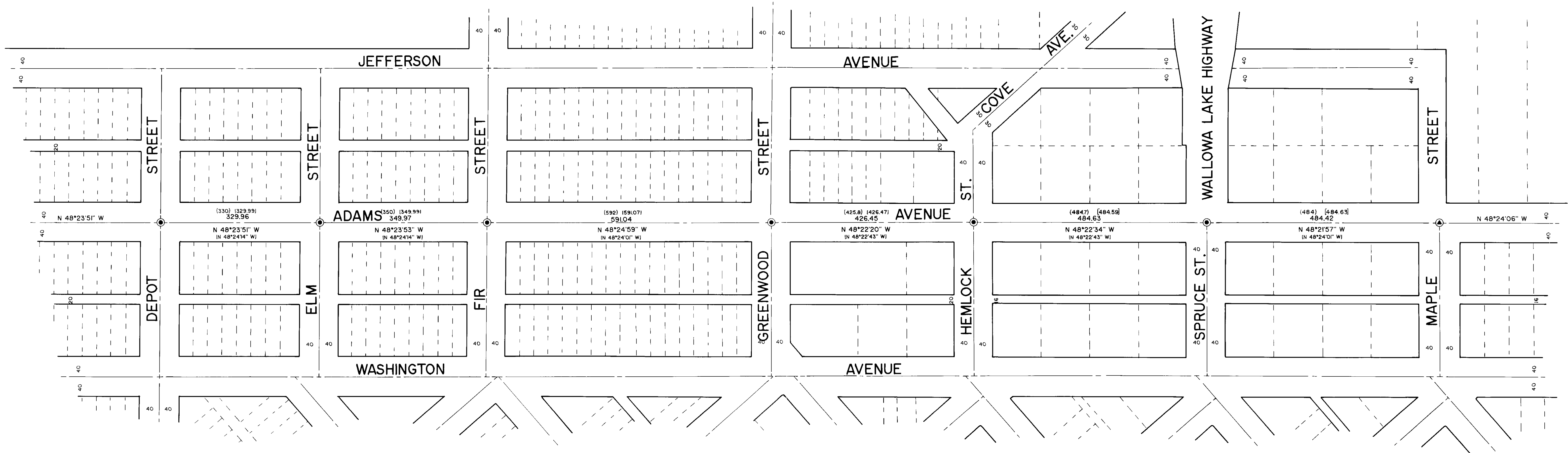
REGISTERED PROFESSIONAL LAND SURVEYOR
NORMAN J. PAULUS JR.
1952

UNION COUNTY SURVEYOR
Date Received 6-1-88
Date Filed 6-3-88
By G. LANGRISH, Deputy
File No. 13-88

SHEET 1 OF 3

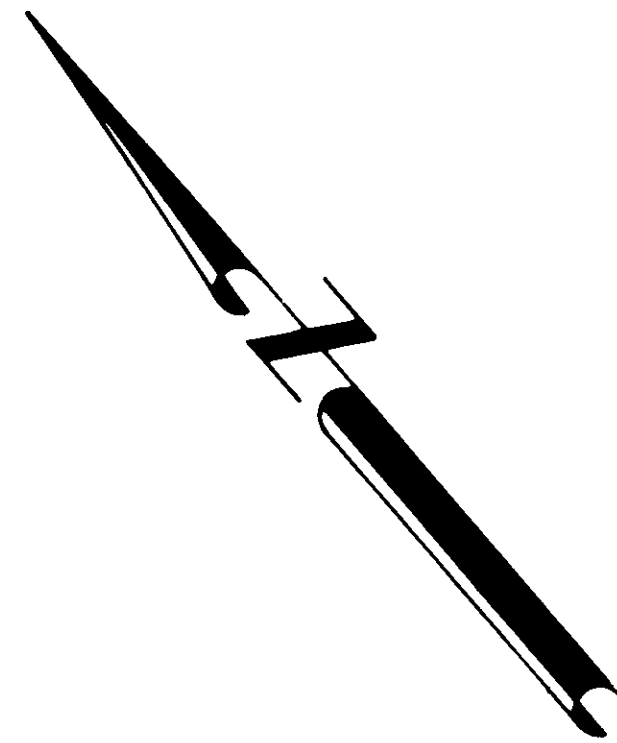
BAGETT - GRIFFITH & ASSOCIATES
LaGrande, Oregon
MAP OF SURVEY
ADAMS AVENUE
Remonumentation
LaGrande
UNION COUNTY, OREGON

SURVEYED FOR	City of LaGrande	
SURVEYED BY	d.l.g. & n.j.p.	4-88
Scale: 1" = 100'	Drawn by: R.G.R. & J.P.P.	4-88



BASIS OF BEARING

The forward bearing as published by the U.S.C. and G.S. from Δ College to Δ Valley, dated 1946.



LEGEND

- \odot Set 2 1/2" brass cap on a 5/8" x 24" copperweld pin in concrete with brass cap marked BAGETT-GRIFFITH & ASSOC OPLS 644 with 1/8" diameter hole drilled at corner position. Set at position determined from references set by the City of LaGrande Surveyor
- \odot Set 2 1/2" brass cap on a 5/8" x 24" copperweld pin in concrete with brass cap marked BAGETT-GRIFFITH & ASSOC OPLS 644 with 1/8" diameter hole drilled at corner position. Set at previously monumented position as per survey number 38-71 (see narrative)
- () Record information from 1922 McLain survey
- [] Record information from survey number 63-73

NOTE:
See sheet 1 for narrative and reference material

UNION COUNTY SURVEYOR

Date Received 6-1-88

Date Filed 6-3-88

By G. LANGRISH, Deputy

File No. 13-88

REGISTERED PROFESSIONAL LAND SURVEYOR

David Griffith

OREGON JULY 10, 1968
DUANE I. GRIFFITH
644

REGISTERED PROFESSIONAL LAND SURVEYOR

Norman J. Paullus Jr.

OREGON JULY 10, 1951
NORMAN J. PAULLUS JR.
1852

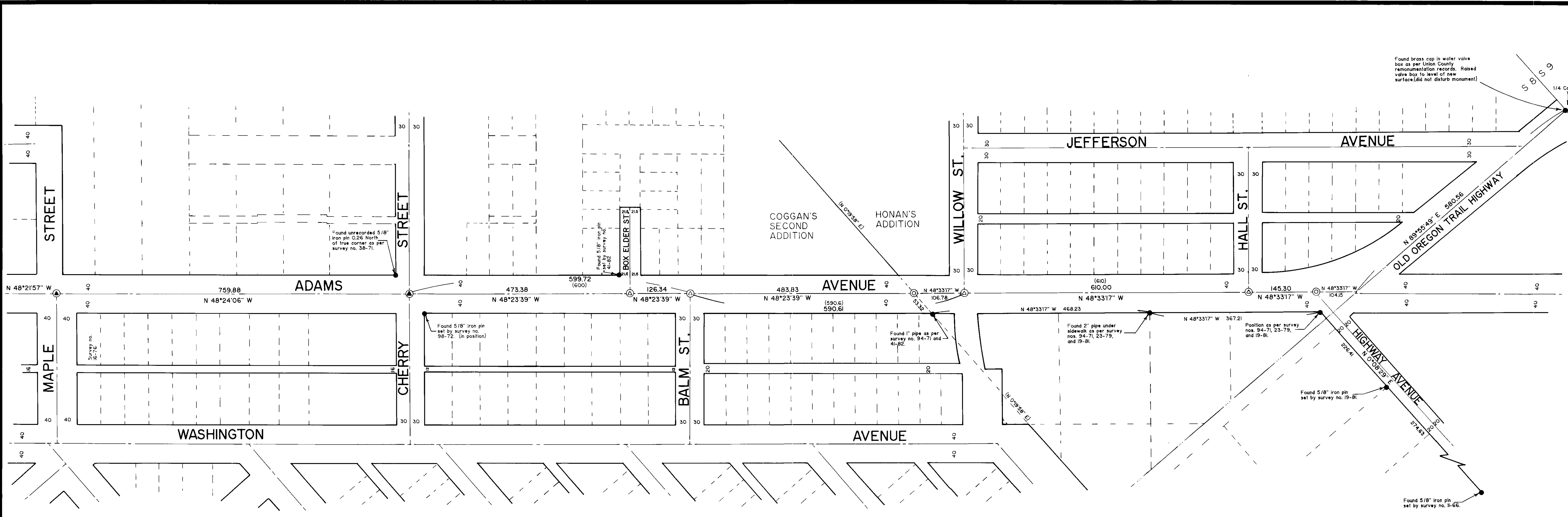
SHEET 2 OF 3

BAGETT - GRIFFITH & ASSOCIATES
LaGrande, Oregon

MAP OF SURVEY

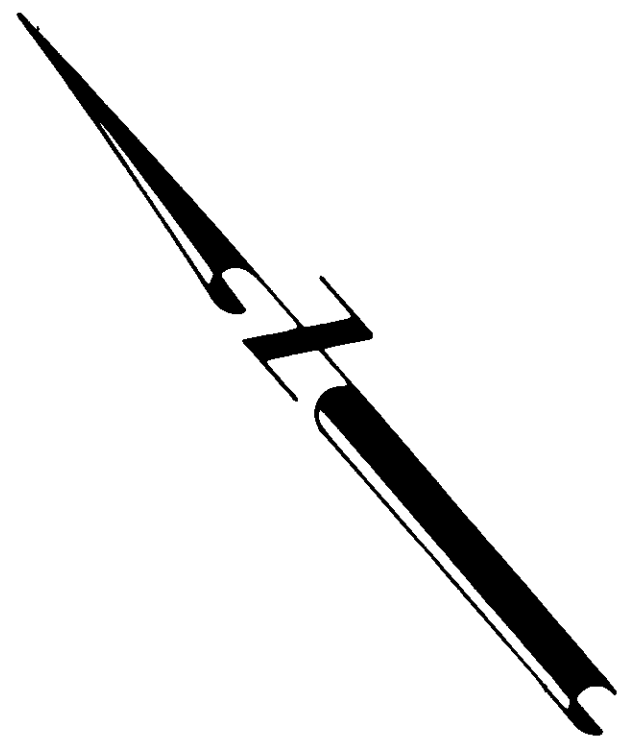
ADAMS AVENUE
Remonumentation
LaGrande
UNION COUNTY, OREGON

SURVEYED FOR	City of LaGrande
SURVEYED BY	d.i.g. & n.j.p. 4-88
Scale: 1" = 100'	Drawn by: R.G.R. & J.P.P. 4-88



BASIS OF BEARING

The forward bearing as published by the U.S.C. and G.S. from Δ College to Δ Valley, dated 1946.



LEGEND

- \odot Set 2 1/2" brass cap on a 5/8" x 24" copperweld pin in concrete with brass cap marked BAGETT-GRIFFITH & ASSOC OPLS 644 with 1/8" diameter hole drilled at corner position. Set at position determined by survey (see narrative).
- \odot Set 2 1/2" brass cap on a 5/8" x 24" copperweld pin in concrete with brass cap marked BAGETT-GRIFFITH & ASSOC OPLS 644 with 1/8" diameter hole drilled at corner position. Set at previously monumented position as per survey number 38-71 (see narrative).
- \odot Set 2 1/2" brass cap on a 5/8" x 24" copperweld pin in concrete with brass cap marked BAGETT-GRIFFITH & ASSOC OPLS 644 with 1/8" diameter hole drilled at corner position. Set at position determined by previous survey (see narrative).
- \bullet Found monument as described
- () Record information from 1922 McLain survey

NOTE:
See sheet 1 for narrative and reference material

UNION COUNTY SURVEYOR

Date Received 6-1-88
 Date Filed 6-3-88
 By G. LANGLITZ DEPUTY
 File No. 13-88

REGISTERED PROFESSIONAL LAND SURVEYOR
Norman J. Paulius
 OREGON JULY 17 1981
 NORMAN J. PAULIUS JR. 1952

BAGETT - GRIFFITH & ASSOCIATES
 LaGrande, Oregon
 MAP OF SURVEY
ADAMS AVENUE
 Remonumentation
 LaGrande
 UNION COUNTY, OREGON

SURVEYED FOR	City of LaGrande
SURVEYED BY	d.i.g. & n.j.p. 4-88
Scale: 1" = 100'	Drawn by: R.G.R. & J.P.P. 4-88