

PLAT OF SURVEY OF SECTIONS 6, 7 & 8, T.1S., R.4E., TOGETHER WITH THE WILLAMETTE BASELINE FROM THE SOUTH 1/4 CORNER OF SECTION 36, T.1N., R.4E., TO THE SOUTHEAST CORNER OF SECTION 33, T.1N., R.4E., W.M., UNION & WALLOWA COUNTIES, OREGON. PAGE 2 OF THIS SURVEY COVERS SECTIONS 18, 19, 30 & THE WEST LINE OF SECTION 31, T.1S., R.4E., TOGETHER WITH THE SOUTHLINE OF SECTION 36, T.1S., R.4E., WILLAMETTE MERIDIAN ALL IN UNION COUNTY, OREGON.

NARRATIVE
LOCATED ON USFS ROAD 62 (POINT PROMINENCE ROAD) APPROXIMATELY 12 MILES SOUTHEASTERLY FROM ELGIN, OREGON.

PROCEDURES
RESEARCH CONSISTED OF INFORMATION FROM ORIGINAL GLO SURVEY RECORDS AND COPIES OF CORNER CARDS & CERTIFICATES ON FILE WITH THE USFS & UNION & WALLOWA COUNTY SURVEYORS OFFICE. B. A. SUTTON, WITH THE ASSISTANCE OF J. SUTTON & M. SUTTON PERFORMED THE FIELD SURVEY WITH A TOP-CON GTS-1. TRAVERSE CLOSURES MEET OR EXCEED US FOREST SERVICE CONTRACT REQUIREMENTS. CORNERS SHOWN AS FOUND (●) OR SET FROM ORIGINAL EVIDENCE (⊙) WERE USED FOR CONTROL FOR SURVEYING & SUBDIVIDING SECTION 6. NO. 133 STEEL FENCE POSTS WERE USED TO POST THE USFS BOUNDARY AT 200'-400' INTERVALS. CORNER CARDS FOR THOSE CORNERS INDICATED AS SET ON THE ADJOINING MAP ARE ON FILE WITH THE LA GRANDE RANGER DISTRICT OF THE USFS. A DETAILED DESCRIPTION OF EACH CORNER FOUND OR SET IS FILED ON CERTIFICATES (USFS FORM RT100-57 9/71) WITH THE USFS OFFICE AND WITH THE WALLOWA AND/OR UNION COUNTY SURVEYORS OFFICE. CORNERS SHOWN AS (⊙) ON THE ADJOINING MAP WERE SET BY SINGLE PROPORTIONATE MEASUREMENT AS NO ORIGINAL EVIDENCE WAS RECOVERED. CORNERS SHOWN AS (Δ) WERE SET BY INTERSECTION.

BASIS OF BEARINGS FOR THIS SURVEY IS BY SOLAR OBSERVATION AT THE NORTH QUARTER CORNER OF SECTION 6 LOOKING EAST TO THE SOUTHEAST CORNER OF SECTION 31, T.1N., R.4E., AND MAY BE REPRODUCED ON THE GROUND BETWEEN THESE TWO INTERVISIBLE CORNERS.

HISTORY OF SURVEYS BASE LINE THROUGH R4E., T. DAVENPORT CONT. 102 APPROVED 1-12-1864
BASE LINE THROUGH RANGE 41 EAST, ~ WM. ODELL, CONTRACT NO. 114, APPROVED 1-17-1867
BASE LINE RETRACED THROUGH RANGE 41E. ~ HENRY MELDRUM, CONT. NO. 450, APPROVED 5-18-1883
BASE LINE RETRACED THROUGH RANGE 41E. ~ ALONZO GESNER, CONTRACT NO. 683, APPROVED 6-28-1899
RANGE LINE BETWEEN R40 & 41E, IN T.1S., ~ HENRY MELDRUM, CONTRACT NO. 450, APPROVED 5-18-1883
RANGE LINE RETRACED IN T.1S., BETWEEN R40 & 41E. ~ ALONZO GESNER, CONTRACT NO. 683, APPROVED 6-28-1899
TOWNSHIP LINE BETWEEN T.1 & 2S., R.4OE., WILLIAM BARR, CONTRACT NO. 355, APPROVED 9-22-1880
SUBDIVISION T.1S., R.4E., ~ ALONZO GESNER, CONTRACT NO. 683, APPROVED, 6-28-1899

OWNERSHIP BY ALIQUOT PARTS:
PRIVATE: SECTIONS 1, 12, 13, 24, 25 & 36, T.1S., R.4OE., ~ SECTIONS 31, 32 & 33, T.1N., R.41E., ~ SECTION 36, T.1N., R.4OE., ~ GOVT LOTS 1, 2, 44 SEC 6, T.1S., R.4E., W.M.
USA: SECTIONS 4, 5, 6 (EXCEPT GOVT LOTS 1, 2, 44), 7, 8, 17, 18, 19, 30, & 31, T.1S., R.4E., W.M.

- LEGEND**
- ~ CORNER MONUMENT FOUND
 - ~ 2 1/2" X 30" ACAP SET
 - ⊙ ~ CORNER SET FROM ORIGINAL EVIDENCE
 - Δ ~ CORNER SET BY INTERSECTION
 - ⊙ ~ CORNER SET BY PROPORTIONING
 - CH. ~ DISTANCE IN CHAINS (1 CHAIN = 66.00 FEET)
 - FT. ~ DISTANCE IN FEET (1 FT. = 0.30480061 METER)
 - M. ~ DISTANCE IN METERS (39.37/12 FEET)
 - ~ POSTED USFS BOUNDARY
 - GLO ~ GENERAL LAND OFFICE
 - ACAP ~ ALUMINUM CAPPED ALUMINUM PIPE
 - BC. ~ BRASS CAP
 - I.P. ~ IRON PIPE
 - BC.I.P. ~ BRASS CAPPED IRON PIPE
 - T. ~ TOWNSHIP
 - R. ~ RANGE
 - PVT. ~ PRIVATE OWNED LANDS
 - USFS ~ UNITED STATES FOREST SERVICE ADMINISTERED LANDS
 - INT. ~ INTERSECTION POINT
 - BT. ~ BEARING TREE
 - S. ~ SECTION
 - BLM. ~ BUREAU OF LAND MANAGEMENT
 - LKS. ~ DISTANCE IN LINKS

REGISTERED PROFESSIONAL LAND SURVEYOR
B. A. SUTTON
OREGON
JULY 15, 1978
1848

UNION COUNTY SURVEYOR
Date Received: 1-25-88
Date Filed: 6-28-88
By: G. LANGRISH, DEPUTY
No. 4-88

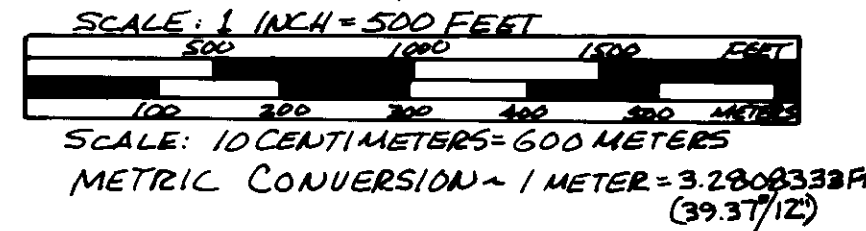
DATE RECEIVED: 1-25-88
DATE FILED: 6-28-88
BY: G. LANGRISH, DEPUTY
NO. 4-88

UNION COUNTY SURVEYOR
DATE RECEIVED: 1-25-88
DATE FILED: 6-28-88
BY: G. LANGRISH, DEPUTY
NO. 4-88

SURVEY BY: SUTTON SURVEYING
994 PARK AVE.
EUGENE, OREGON 97404

SURVEY FOR: USDA FOREST SERVICE
WALLOWA-WHITMAN NATIONAL FOREST
P.O. BOX 907, BAKER, OREGON 97814
CONTRACT NUMBER: 53-04MB-4-2987

SURVEY OF: SECTIONS 6, 7, 8, T.1S., R.4E., W.M., UNION COUNTY, OREGON TOGETHER WITH THE WILLAMETTE BASELINE FROM THE S. 1/4 COR. S.36, T.1N., R.4OE., TO THE S.E. COR. S.33, T.1N., R.4E., W.M., UNION & WALLOWA CO.



GLO - A. GESNER, 1899 - S89°50'W - 39.90 CH.
N88°48'55"E - 2547.35 FT. 776.434 M.

POSITION ESTABLISHED FROM 2 FOUND ORIG. BT'S. NO CORNER MONUMENT FOUND OR SET AS IT FALLS IN WILDERNESS AREA.

AT 45.20 CHAINS SEARCHED FOR 3" FIR ORIG. LINE TREE (NOT FOUND)

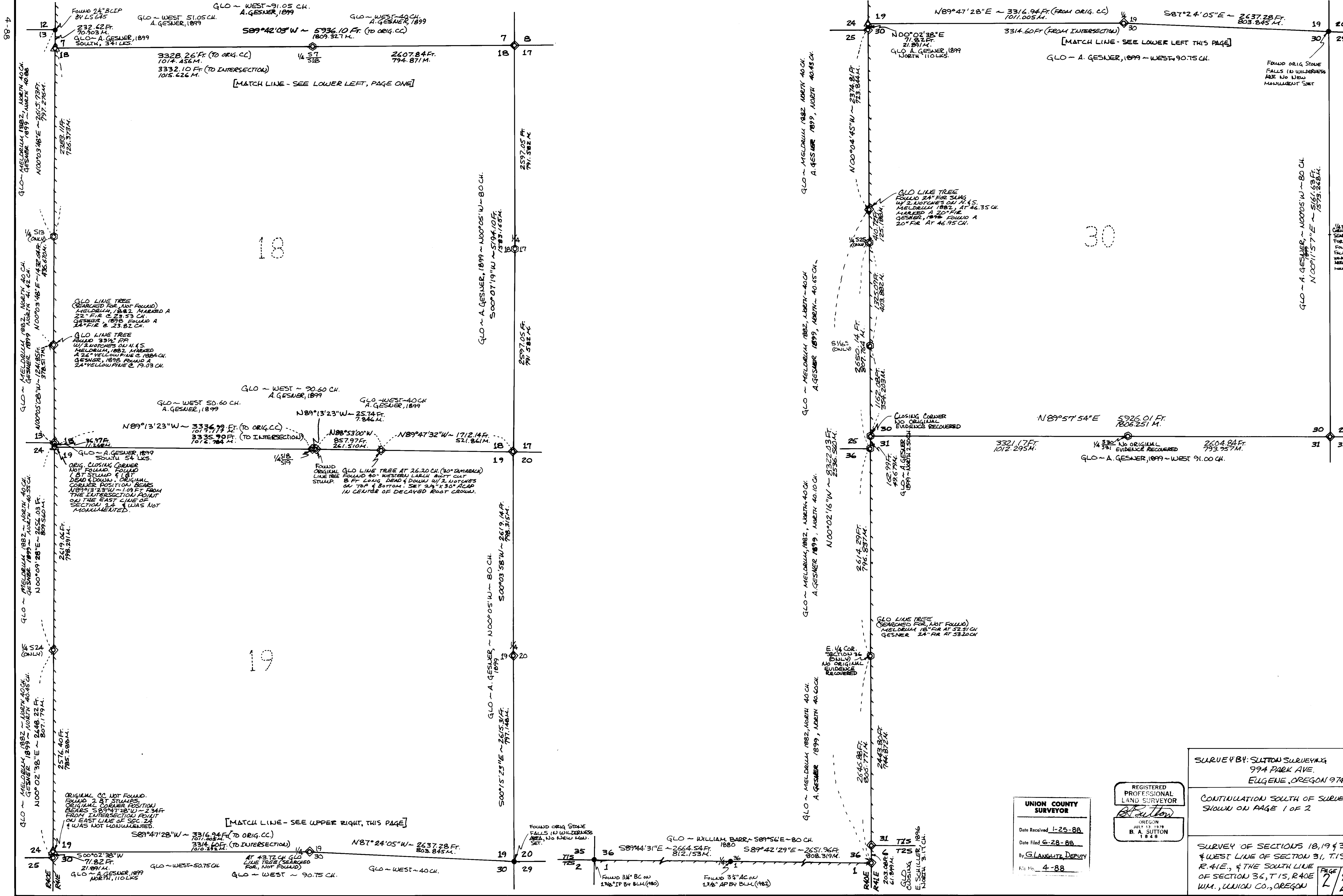
1/4 S71S8 FOUND ORIG STONE

SET 2 1/2" X 30" ACAP AT LOCATION OF ORIGINAL LIVE TREE. FOUND DEAD & DOWN DECAYED FIR W/ 2 NOTCHES IN BARK ON UNDER SIDE.

SECTION CORNER FOUND 1 LIVE ORIG BT. & 1 DEAD & DOWN ORIG BT.

EAST 1/4 SECTION 8 FOUND ORIG STONE W/ 2 BEARING TREES. NO NEW MONUMENT SET AS IT FALLS IN WILDERNESS AREA.

SE CORNER SECTION 8 FOUND 2 ORIG BEARING TREES. NO CORNER MONUMENT FOUND OR SET AS IT FALLS IN WILDERNESS AREA.



88-4

88-4

[MATCH LINE - SEE LOWER LEFT, PAGE ONE]

[MATCH LINE - SEE UPPER RIGHT, THIS PAGE]

[MATCH LINE - SEE LOWER LEFT THIS PAGE]

SURVEY BY: SUTTON SURVEYING
994 PARK AVE.
EUGENE, OREGON 97404

CONTINUATION SOUTH OF SURVEY
SHOWN ON PAGE 1 OF 2

SURVEY OF SECTIONS 18, 19 & 30
& WEST LINE OF SECTION 31, T.15.,
R. 41E., & THE SOUTH LINE
OF SECTION 36, T.15, R.4E.
WM., UNION CO., OREGON

UNION COUNTY
SURVEYOR
Date Received 1-25-88
Date Filed 6-28-88
By G. LANGRISH, DEPUTY
File No. 4-88

REGISTERED
PROFESSIONAL
LAND SURVEYOR
B. A. SUTTON
1848

SEARCHED FOR, NOT FOUND
FOLLOWS IN UNSEARCHED AREA, NOT MONUMENTED

PAGE 2 OF 2