

LEGEND

- - SET 2 1/2" x 30" ALUM. PIPE WITH 2 1/2" ALUM. CAP WITH 2 1/2" ALUM. CAP BY SURVEY. SEE CORNER RECORD FILED SEPERATELY.
- - 2 1/2" BRASS CAP ON 2 1/2" G.I.P. BY LS 1051, TIED ON THIS SURVEY SEE MAP NO. 144 - 78.
- - 2 1/2" BRASS CAP ON 2 1/2" G.I.P. BY LS 1051, TIED ON THIS SURVEY, BUT REJECTED BY THIS SURVEYOR. SEE MAP NO. 144 - 78.
- — NATIONAL FOREST BOUNDARY POSTED ON THIS CONTRACT.
- (XOX) — RECORD FROM SURVEY MAP NO. 144 - 78.
- [XOX] — GLO RECORD BY F.W. CAMPBELL.

HISTORY OF SURVEYS

SUB DIVISIONS FOR TWP 4N R40E WERE ORIGINALLY DONE BY F.W. CAMPBELL, U.S. DEPUTY SURVEYOR, UNDER CONTRACT NO. 507 DATED JUNE 28, 1884.

SUBDIVISION OF SECTION 29 WAS DONE BY BARRY BARBOUR, LS 1051, IN 1978. SEE MAP NO. 144 - 78.

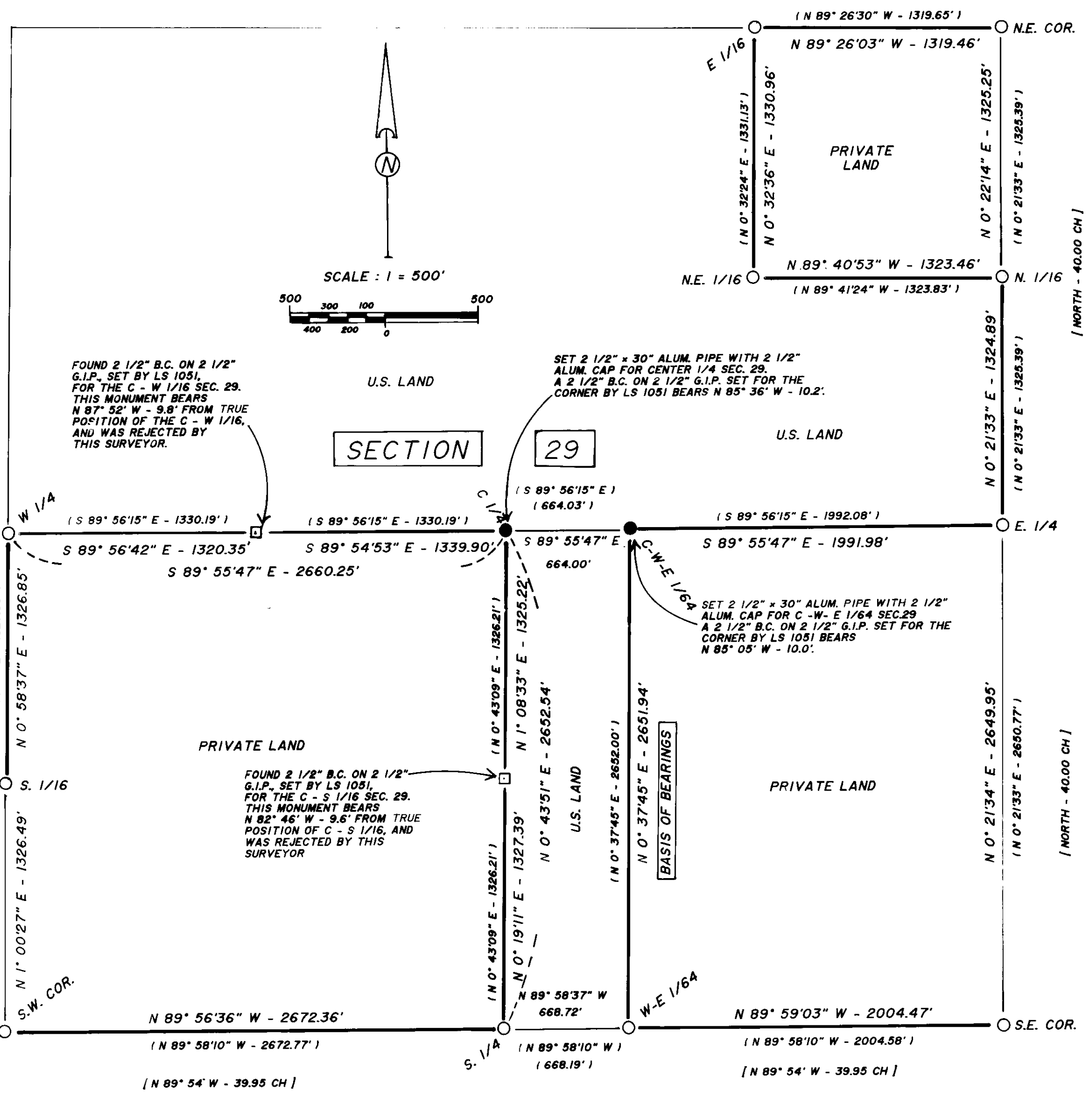
FOREST BOUNDARIES IN SECTION 29 WERE POSTED BY DAVE KRUMBEIN, LS 933 IN 1982.

NARRATIVE OF SURVEY

THE PURPOSE OF THIS SURVEY WAS TO POST NATIONAL FOREST BOUNDARY IN SECTION 29, TWP 4 NORTH, RGE 40 E, W.M. DURING THE SURVEY, IT WAS DISCOVERED THAT THE C 1/4, C - W - E 1/64, C - S 1/16 AND C - W 1/16 OF SECTION 29, AS ESTABLISHED BY BARRY BARBOUR, LS 1051, WERE OUT OF POSITION BY ABOUT 10 FEET. THE VARIANCES OF EACH CORNER ARE SHOWN ON THE PLAT. THE TRUE POSITIONS FOR THE C 1/4 AND C - W - E 1/64 CORNERS WERE REMONUMENTED AS PART OF THIS SURVEY. THE C - W 1/16 AND C-S 1/16 CORNERS WERE NOT REMONUMENTED BECAUSE OF THEIR POSITION IS NOT REQUIRED TO DEFINE THE PRESENT FOREST BOUNDARY. THE POSITIONS FOR THE C 1/4 AND C - W 1/16 CORNERS WERE LOCATED ON THE LINE BETWEEN THE W 1/4 AND E 1/4 OF SECTION 29, AT THE PROPORTIONAL DISTANCES BASED ON THE PLAT RECORDED BY BARRY BARBOUR. THIS METHOD OF ESTABLISHMENT IS SATISFACTORY BASED ON CLOSE AGREEMENT BETWEEN MEASUREMENTS OF THIS SURVEY COMPARED TO RECORD MEASUREMENTS BY BARBOUR. CORNER RESTORATION FORMS FOR THE C 1/4 AND C - W - E 1/64 ARE FILED SEPERATELY.

FIELD WORK WAS DONE WITH A 2 PERSON CREW USING A 20 SECOND THEODOLITE, STEEL TAPE, AND INFRA-RED DISTANCE MEASURING EQUIPMENT.

BEARINGS ARE BASED ON THE LINE BETWEEN THE TRUE MONUMENT FOR THE C - W - E 1/64 AND THE MONUMENT FOR THE W - E 1/64 AS SHOWN ON THE PLAT.



SURVEYOR'S CERTIFICATE

I, WILLIAM R. WELLS, A REGISTERED PROFESSIONAL LAND SURVEYOR IN THE STATE OF OREGON, DO HEREBY CERTIFY THAT THIS PLAT, AND THE CORNER CERTIFICATES FILED SEPERATELY, ARE A CORRECT REPRESENTATION OF A SURVEY PERFORMED BY ME DURING THE MONTHS OF SEPT. AND OCT, 1987 AT THE REQUEST OF THE USDA, FOREST SERVICE. SAID SURVEY AND PLAT WERE PREPARED IN ACCORDANCE WITH OREGON STATUTES AND WITH THE ARTICLES OF THE CONTRACT.

William R. Wells
WILLIAM R. WELLS
OREGON LICENSE NO. 1106

William R. Wells

RECORD OF SURVEY PLAT

**PROCTOR 1987 CADASTRAL SURVEY
UMATILLA NATIONAL FOREST
CONTRACT NO.00 - 04R3 - 7 - 64**

LOCATED IN SECTION 29, TWP 4 NORTH, RGE 40 E, W.M. UNION COUNTY OREGON.

SURVEYED BY : WILLIAM R. WELLS
P.O. BOX 1696, PENDLETON, OREGON, PH : 276-6362

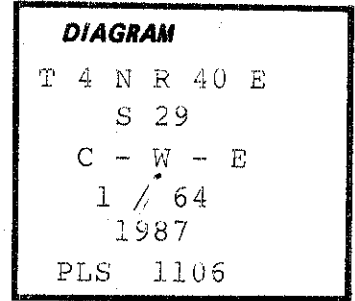
UNION COUNTY SURVEYOR	
Date Received	1-11-88
Date Filed	1-12-88
By	G. LANGRISH, DEPUTY
File No.	1-88

(REFER TO NARRATIVE DRAWING 1/12)

CERTIFIED RECORD OF LAND CORNER MONUMENTATION

History of original corner establishment:

This corner was originally set in error by PLS 1051 in 1978. This corner certificate is for the correct corner monument location which was established by PLS 1106 in 1987.



Description of corner evidence found:

A monument by PLS 1051 brs S85°05'E, 10.0'.

Description of monument and accessories I established to perpetuate the original location of this corner:

At correct corner location...

Set 2½" x 30" aluminum pipe with 2½" aluminum cap 24" in ground and surrounded with a mound of earth and stone. Cap marked as shown in corner diagram.

New bearing trees established:

A 12" Western Larch brs S62½°W, 37.0' scribed C-W-E1/64S29 BT.

A 14" Western Larch brs N63°W, 88.6' scribed C-W-E1/64S29 BT.

New bearing trees have a brass washer stamped PLS 1106 nailed to face of blaze. Attached sign 54-3 & 54-9 and painted face of blaze & 6" red band around each BT. Set steel fence post East & South of corner, attached sign 54-9 to one post and 54-2 to both posts.

Compass declination 19° East.

I hereby certify that the above corner monument was properly established to U.S.F.S. standards under my supervision on October 6, 1987.

REGISTERED PROFESSIONAL LAND SURVEYOR

William R. Wells

OREGON JUL 12, 1987 WILLIAM R. WELLS 1106
--

Office of County Surveyor..... County of... Union.....

State of... Oregon..... I hereby certify that the within instrument was filed in this office

for record on the..... day of....., 19.....

..... by.....

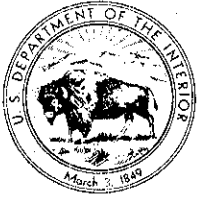
(COUNTY OFFICIAL)

(DEPUTY)

Form R6-7100-57 (9/71)

(REFER TO SURVEY 1-88)

UNION COUNTY SURVEYOR
Date Received <u>1-11-88</u>
<small>GPO-791-311</small>
Date Filed <u>1-12-88</u>
By <u>G. LANGLITZ, DEPUTY</u>
File No. <u>NARRATIVE DRAWING 1/12</u>



United States Department of the Interior

BUREAU OF LAND MANAGEMENT
OREGON STATE OFFICE
P.O. BOX 2965 (825 NE MULTNOMAH STREET)
PORTLAND, OREGON 97208



IN REPLY REFER TO:
9641 (942)

RECEIVED
OCT 25 1988

October 21, 1988

Mr. Howard Perry
Union County Surveyor
P.O. Box 1107
LaGrande, OR 97850

Dear Sir:

The enclosed diagram(s) indicate cadastral survey field work completed by this office from October 1987 through September 1988.

The diagram(s) are for informational purposes only. The final field notes and plat have not yet been prepared. If you need any information on any of these surveys, please feel free to contact this office at (503) 231-6987.

Sincerely,

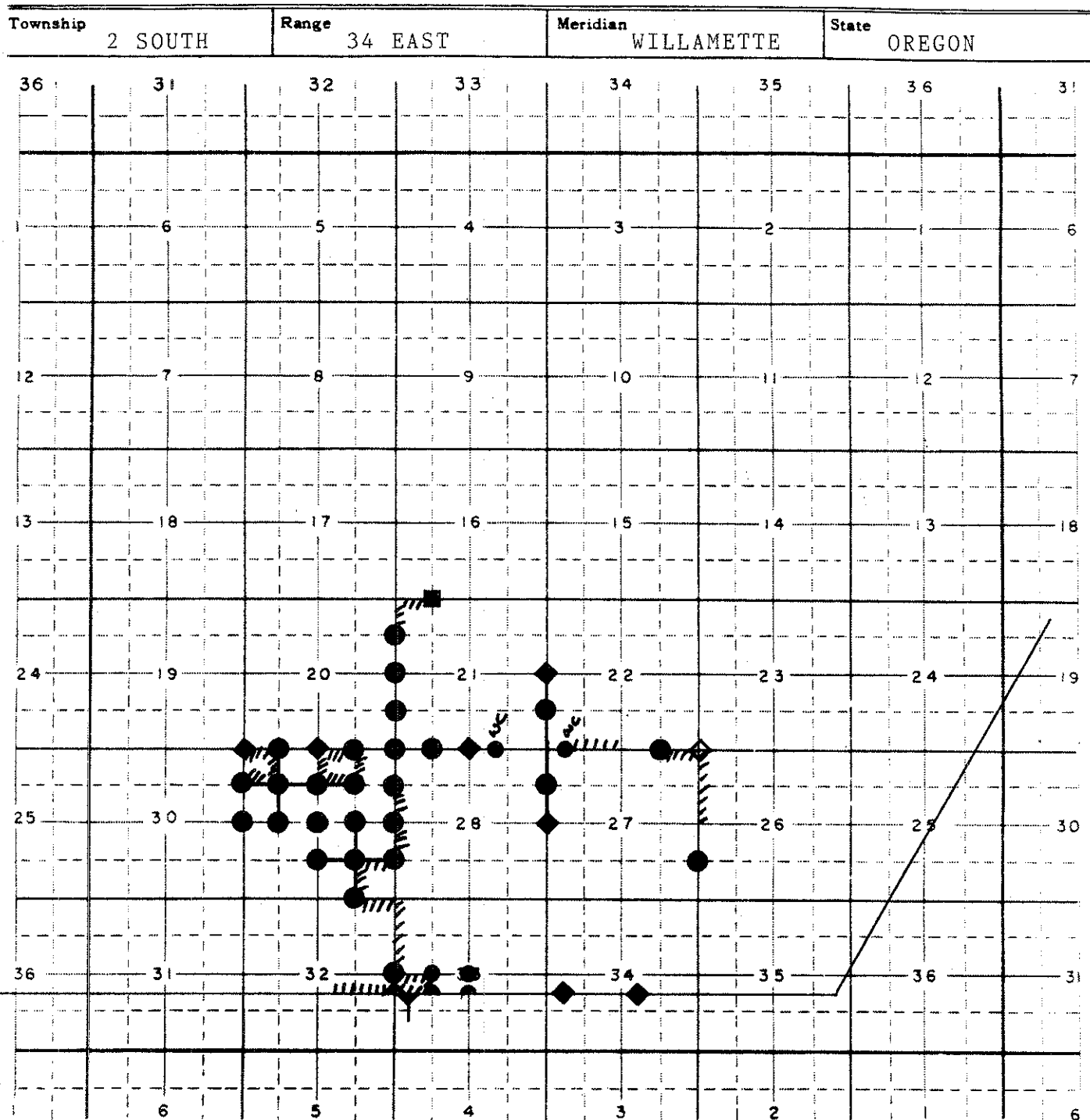
Wayne M. Gardner
Chief, Branch of Cadastral
Survey

Enclosures (as stated)

UNION COUNTY SURVEYOR
Received <u>10-25-88</u>
Filed <u>10-28-88</u>
<u>G. LANGLITZ, DEPUTY</u>
File No. <u>NARRATIVE 1/12</u>

U.S. DEPARTMENT OF THE INTERIOR
 BUREAU OF LAND MANAGEMENT

TOWNSHIP DIAGRAM*



Field Work Completed During FY 1988

For the Bureau of Indian Affairs,

Umatilla Indian Reservation,
 Umatilla and Union Counties, Oregon

- | | |
|--|------------------------------------|
| <u>————</u> Resurveyed or Surveyed line | 3 1/4 Miles Resurveyed or Surveyed |
| <u>◇</u> Original Corner, previously remonumented | 42 Monuments set |
| <u>◆</u> Original Corner, remonumented this survey | |
| <u>●</u> Corner established this survey | Group 1343, Oregon |
| <u> </u> Reservation boundary posted | by Richard L. Johnson |
| Survey from 10/1/87 to 6/13/88 | |