

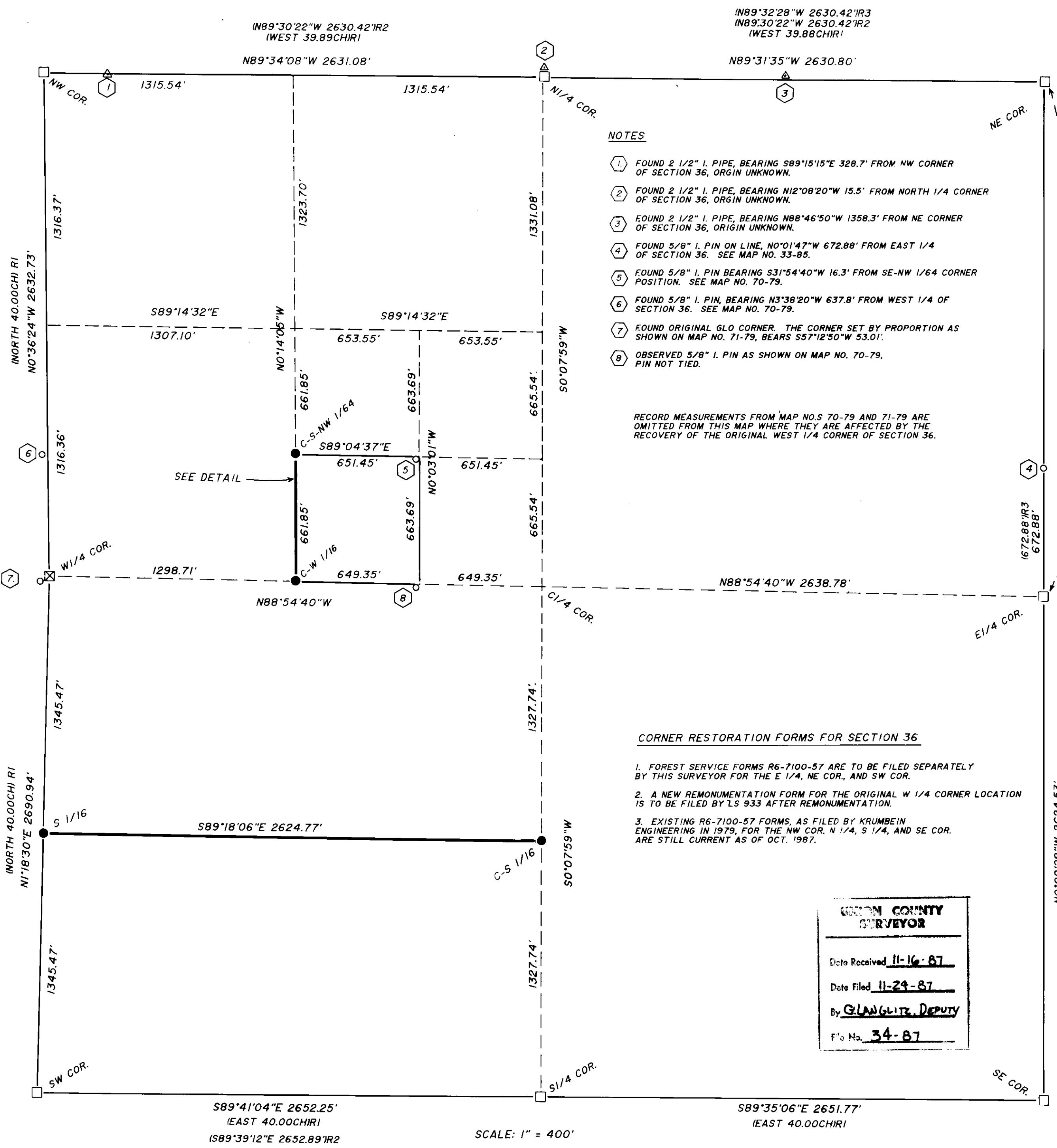
LEGEND

- (XOX)R1 - GLO RECORD.
- (XOX)R2 - RECORD FROM MAP NO. 71-79 BY LS 933.
- (XOX)R3 - RECORD FROM MAP NO. 33-85 BY LS 951.
- - SECTION OR 1/4 SECTION CORNERS MONUMENTED WITH 2 1/2" BRASS CAPS ON 2 1/2" GALV. IRON PIPES. (THESE MONUMENTS FOUND).
- ⊗ - 1/4 SECTION CORNER TO BE MONUMENTED WITH 2 1/2" BRASS CAP ON 2 1/2" BY 30" GALV. IRON PIPE BY LS 933.
- - MONUMENT FOUND AS NOTED.
- △ - POINT FOUND AS NOTED--NOT ACCEPTED AS AN OFFICIAL MONUMENT.
- - SET 5/8" BY 30" I. PIN WITH 1 1/2" YELLOW PLASTIC CAP MARKED "W.R WELLS PLS 1106".

NARRATIVE OF SURVEY

THE PURPOSE OF THIS SURVEY WAS TO MONUMENT THE C-S 1/16 AND THE S 1/16 ON THE WEST LINE OF SECTION 36, AND THE C-W 1/16 AND C-S NW 1/64 OF SECTION 36. THE SECTION WAS SUBDIVIDED BY CALCULATION FROM ACCEPTED SECTION AND 1/4 SECTION CORNERS AS PRESCRIBED IN THE 1973 MANUAL OF INSTRUCTIONS. DURING A BOUNDARY POSTING SURVEY FOR THE UMATILLA NATIONAL FOREST IN SEPTEMBER, 1987, THE ORIGINAL WEST 1/4 CORNER OF THE SECTION WAS RECOVERED. THE ORIGINAL POSITION IS DIFFERENT FROM THE PROPORTIONED CORNER POSITION AS MONUMENTED AND SHOWN ON MAP NO. 71-79. THE PROPORTIONED CORNER MONUMENT IS TO BE RELOCATED TO THE ORIGINAL CORNER POSITION BY LS 933.

BEARINGS FOR THIS SURVEY ARE BASED ON THE LINE BETWEEN THE MONUMENTS AT THE NE CORNER AND E 1/4 CORNER OF SECTION 36 AS SHOWN ON THIS PLAT. THE FIELD SURVEY WAS MADE USING A 20" THEODOLITE AND INFRA-RED DISTANCE MEASURING EQUIPMENT.



NOTES

- ① FOUND 2 1/2" I. PIPE, BEARING S89°15'15"E 328.7' FROM NW CORNER OF SECTION 36, ORIGIN UNKNOWN.
- ② FOUND 2 1/2" I. PIPE, BEARING N12°08'20"W 15.5' FROM NORTH 1/4 CORNER OF SECTION 36, ORIGIN UNKNOWN.
- ③ FOUND 2 1/2" I. PIPE, BEARING N88°46'50"W 1358.3' FROM NE CORNER OF SECTION 36, ORIGIN UNKNOWN.
- ④ FOUND 5/8" I. PIN ON LINE, NO°01'47"W 672.88' FROM EAST 1/4 OF SECTION 36. SEE MAP NO. 33-85.
- ⑤ FOUND 5/8" I. PIN BEARING S31°54'40"W 16.3' FROM SE-NW 1/64 CORNER POSITION. SEE MAP NO. 70-79.
- ⑥ FOUND 5/8" I. PIN, BEARING N3°38'20"W 637.8' FROM WEST 1/4 OF SECTION 36. SEE MAP NO. 70-79.
- ⑦ FOUND ORIGINAL GLO CORNER. THE CORNER SET BY PROPORTION AS SHOWN ON MAP NO. 71-79, BEARS S57°12'50"W 53.01'.
- ⑧ OBSERVED 5/8" I. PIN AS SHOWN ON MAP NO. 70-79. PIN NOT TIED.

RECORD MEASUREMENTS FROM MAP NO.S 70-79 AND 71-79 ARE OMITTED FROM THIS MAP WHERE THEY ARE AFFECTED BY THE RECOVERY OF THE ORIGINAL WEST 1/4 CORNER OF SECTION 36.

CORNER RESTORATION FORMS FOR SECTION 36

1. FOREST SERVICE FORMS R6-7100-57 ARE TO BE FILED SEPARATELY BY THIS SURVEYOR FOR THE E 1/4, NE COR., AND SW COR.
2. A NEW REMONUMENTATION FORM FOR THE ORIGINAL W 1/4 CORNER LOCATION IS TO BE FILED BY LS 933 AFTER REMONUMENTATION.
3. EXISTING R6-7100-57 FORMS, AS FILED BY KRUMBEIN ENGINEERING IN 1979, FOR THE NW COR., N 1/4, S 1/4, AND SE COR. ARE STILL CURRENT AS OF OCT. 1987.

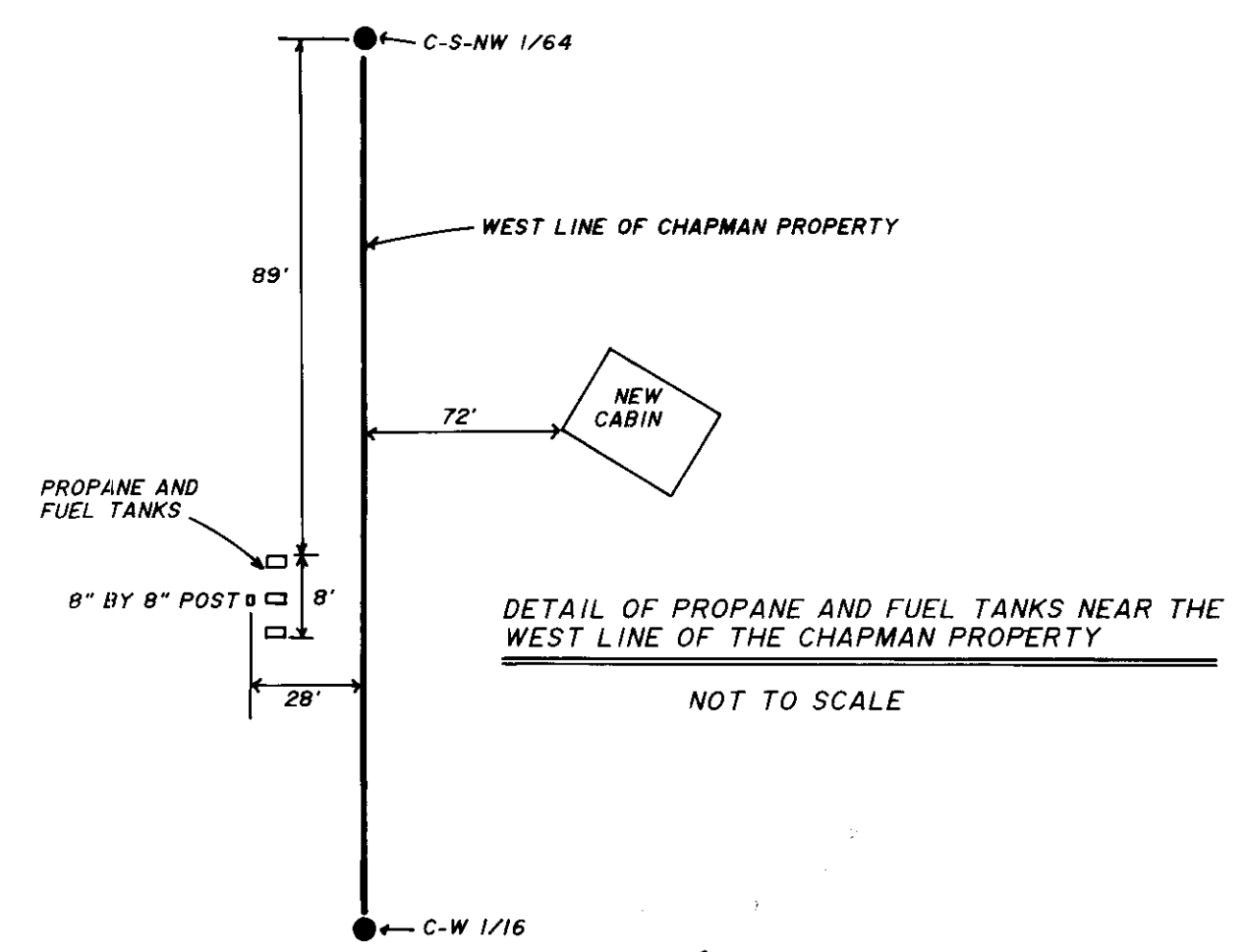
UNION COUNTY SURVEYOR

Date Received 11-16-87

Date Filed 11-29-87

By G. LANGLITZ, DEPUTY

File No. 34-87



Wells R. Wells

PLAT OF SURVEY FOR GROTE AND CHAPMAN

LOCATED IN THE SW AND NW QUARTERS OF SECTION 36, T4N, R38E, W.M., UNION COUNTY, OREGON

SURVEYED BY: W.R. WELLS
 P.O. BOX 1696, PENDLETON, OREGON, PHONE: 276-6362
 SURVEYED ON OCT. 7 AND 8, 1987