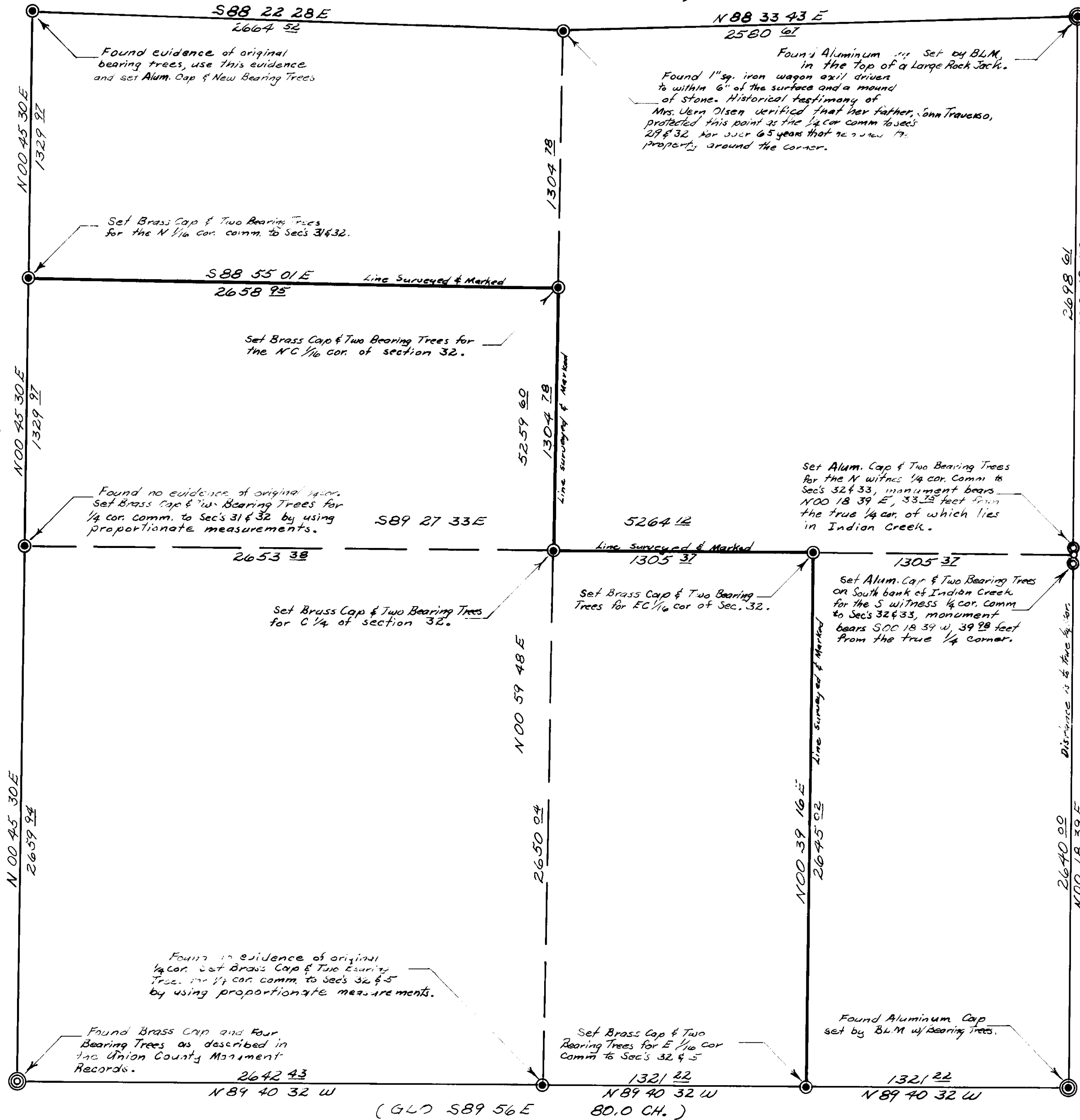


**RECORD OF SURVEY**  
**BOISE-CASCADE'S LITTLE INDIAN CREEK SURVEY**  
**SECTION 32, T1S, R40E, U.M.**  
**UNION COUNTY OREGON**  
**Scale 1" = 400' Date 12-10-86**

(GLO N89 48 W 80.28 CH.)



**NARRATIVE:**

This survey was made at the request of Boise Cascade Corporation, I was instructed to monument the four 1/4 corners common to Sections 32 and the NW Section Corner of Section 32, also to subdivide the section to establish Boise Cascade's North and East property line, marking said line and placing the necessary interior corners. During the course of the survey I determined the 1/4 corner common to sections 32 & 33 was approximately in the middle of Indian Creek, therefore I set two witness corners for this 1/4 corner. Also during the Survey I found a linch square wagon axel and a mound of stone in the vicinity of the 1/4 corner common to sections 29 & 32. Referring to the GLO notes, I found calls to a small creek, Little Indian creek and Main Indian creek. These streams converge, therefore the distance between the creeks meeting the GLO calls could only fit in one position. That position I found to agree with the wagon axel. Further investigation revealed that the late John Traverso, father of Mrs. Vern Olsen had owned the property surrounding this wagon axel and that he had protected this point as he said it was the 1/4 corner. This historical testimony, as related by Mrs. Vern Olsen, helped to verify the 1/4 corner position of which I accepted as the true corner. The two remaining 1/4 corners were not found due to extensive logging in early days destroyed all evidence of their existence. Therefore I deemed it necessary to establish their position by proportionate measurements. I then completed the survey, using public and private records and in conformance with the BLM manual and the laws of the State of Oregon.

James H. Hambleton  
 ORLS 645  
 Rt 1 Box 20A  
 Baker, Oregon

**NOTE:**

For monumentation information see Record of Corner Monumentation sheets filed separately.

**LEGEND:**

- ⊙ Found Aluminum Cap set by BLM.
- ⊙ Found Brass Cap as per Union County records.
- Set monument this survey
- No monument set
- ⊙ Witness corner, Brass Cap set this survey

**REFERENCE MATERIAL:**

GLO Contract No. 450, dated June 11, 1882, by Deputy Surveyor Henry Meldrum.

<b>UNION COUNTY SURVEYOR</b>	
Date Received	12-12-86
Date Filed	12-22-86
By	G. LANGWITZ, Deputy
File No.	37-86

