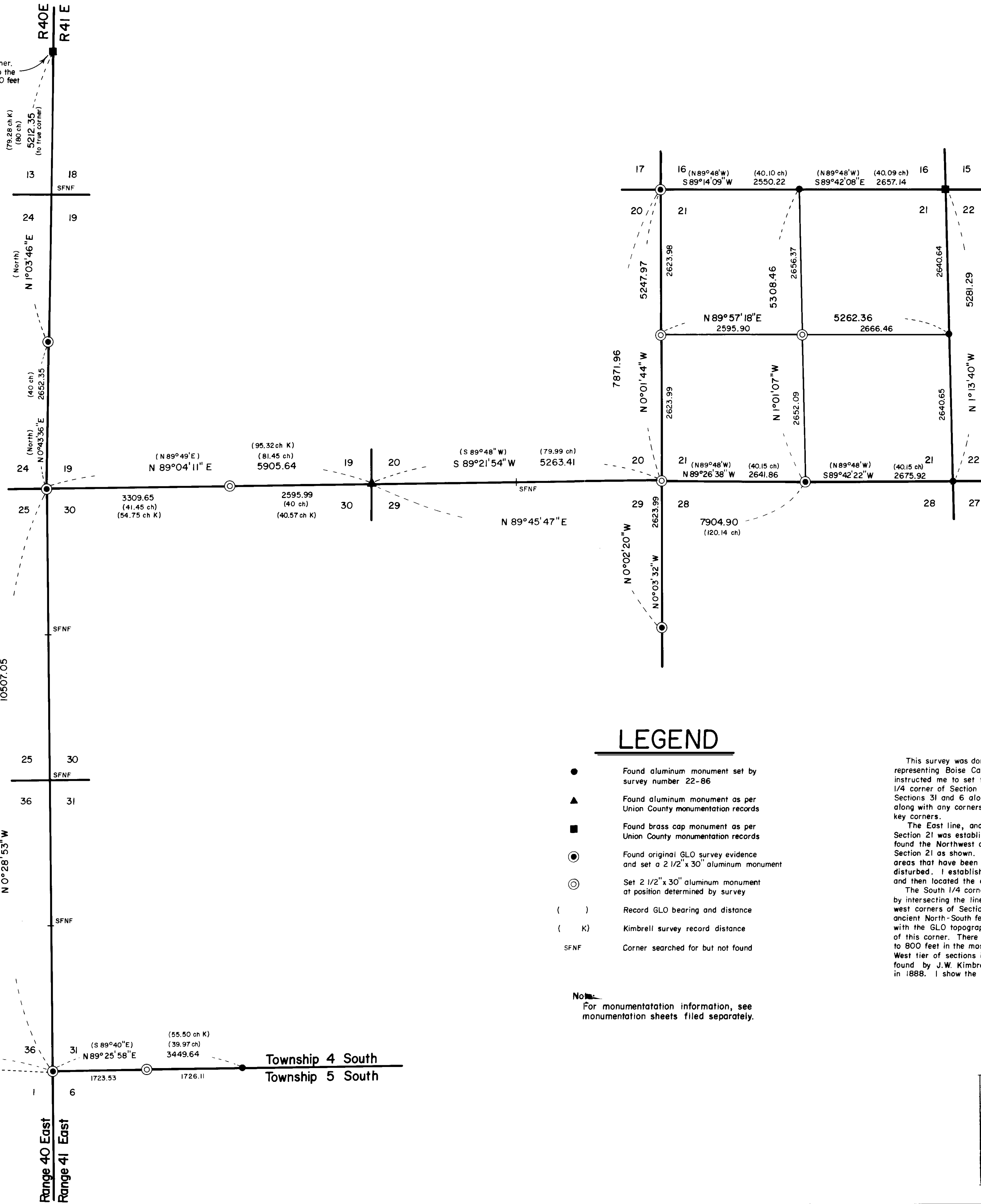


NOTE:
 Monument found is a witness corner.
 Distance and bearing shown is to the true corner, which is North 16.00 feet from the found monument



BASIS OF BEARING

Solar observation taken at a point 1087 feet North and 1256 feet West of the Southwest corner of Section 31, Township 4 South, Range 41 East of the Willamette Meridian. (Same basis of bearing as survey number 22-86)



REFERENCE MATERIAL

GLO contract number 235 by John H. Stone dated July 6, 1875.
 GLO contract number 320 by Henry M. Thatcher dated April 1, 1879.
 Survey by J.W. Kimbrell, Union County Surveyor, dated April 19, 1888, recorded in the old survey book on pages 57 & 58.
 Survey by J.W. Kimbrell, Union County Surveyor, dated July 13, 1888, recorded in the old survey book on pages 81-83.
 Union County monumentation records
 Survey Number 22-86

LEGEND

- Found aluminum monument set by survey number 22-86
- ▲ Found aluminum monument as per Union County monumentation records
- Found brass cap monument as per Union County monumentation records
- ⊙ Found original GLO survey evidence and set a 2 1/2" x 30" aluminum monument at position determined by survey
- ⊙ Set 2 1/2" x 30" aluminum monument at position determined by survey
- () Record GLO bearing and distance
- (K) Kimbrell survey record distance
- SFNF Corner searched for but not found

Note:
 For monumentation information, see monumentation sheets filed separately.

NARRATIVE

This survey was done at the request of Guy Francy, representing Boise Cascade Corporation. Mr. Francy instructed me to set the center of Section 21, the South 1/4 corner of Section 19, and the West 1/16 corner between Sections 31 and 6 along the South line of the township, along with any corners controlling the position of these key corners.

The East line, and a portion of the North line of Section 21 was established by survey number 22-86. I found the Northwest corner and South 1/4 corner of Section 21 as shown. Those corners not found were in areas that have been heavily logged and otherwise disturbed. I established these corners by proportion and then located the center of Section 21 by intersect.

The South 1/4 corner of Section 19 was established by intersecting the line between the Southeast and Southwest corners of Section 19, and the remains of an ancient North-South fence line. This position is very harmonious with the GLO topography calls immediately East and West of this corner. There appears to be an excess of 650 to 800 feet in the most Westerly half mile of the entire West tier of sections in this township. This was also found by J.W. Kimbrell in his two surveys in this township in 1888. I show the relationship along the range line to

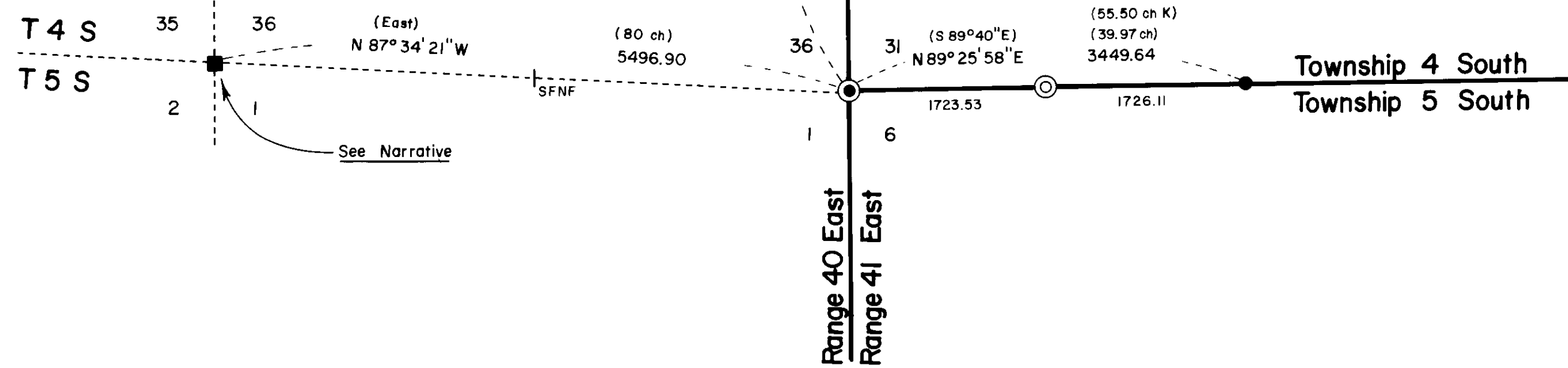
to the North to help resolve any future problems encountered along the Westerly tier of sections in this township.

In order to set the West 1/16 corner between Sections 31 and 6, I first had to resolve the position of the township corner. I have previously found the township corner stone set by John H. Stone, and also an unrecorded township closing corner stone set by Henry M. Thatcher. (For a more detailed explanation, see survey number 22-86). I wrote to the BLM for an opinion on the situation, and as a result of that opinion, I set the township corner at the position of the stone set by John H. Stone, which is common to all four townships. I also asked for an opinion on the 1/16 corner in question, and as a result monumented it at 20 chains proportionate to Thatcher's call (39.97 chains). Again it is common to both townships.

I feel I must caution against anyone using the brass cap monument a mile West of the township, set by Gary Langlitz, OPLS 1099. This corner was monumented in good faith on the basis shown and discussed on the monumentation record filed by Langlitz in 1984. The relationship of Stone's corners on the range line North and the markings on the stones I found do not support the stone that Mr. Langlitz found.

I find no other problems with this survey.

Duane I. Griffith
 Duane I. Griffith, OPLS 644
 Baggett, Griffith and Associates
 2006 Adams Avenue
 La Grande, Oregon



UNION COUNTY SURVEYOR
 Date Received 10-20-86
 Date Filed 10-20-86
 By G. LANGSUTZ DEPUTY
 File No. 31-86

REGISTERED PROFESSIONAL LAND SURVEYOR
Duane I. Griffith
 OREGON JULY 10, 1984
 DUANE I. GRIFFITH 644

BAGETT - GRIFFITH & ASSOCIATES La Grande, Oregon			
Map of Survey Monumentation of selected corners in Sections 19, 21, 28 and 31, Township 4 South, Range 41 East, Willamette Meridian			
UNION COUNTY, OREGON			
SURVEYED FOR	Boise Cascade Corporation		
SURVEYED BY	d.i.g.	889-86	
Scale: 1" = 1000'	Drawn by: R.G.R.		9-86