

### BASIS OF BEARING

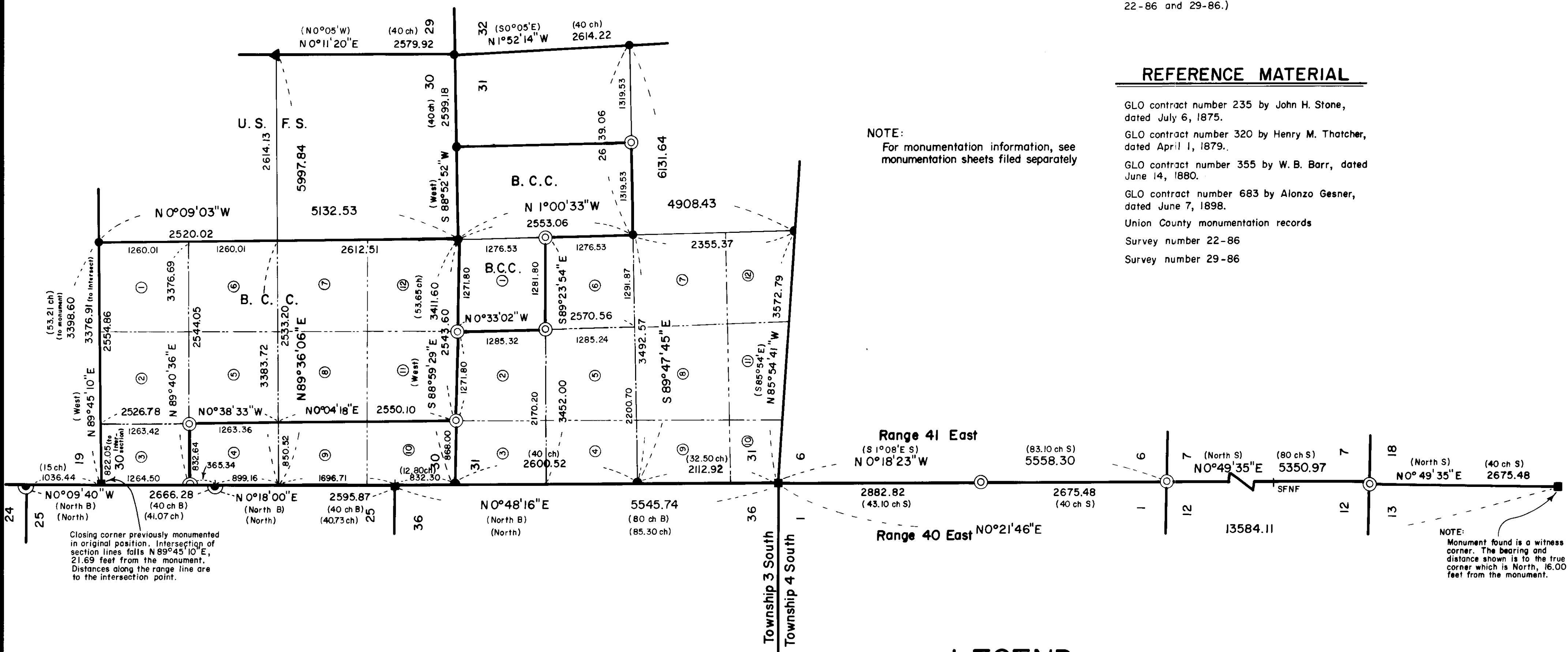
Solar observation taken at a point 1087 feet North and 1256 feet West of the Southwest corner of Section 31, Township 4 South, Range 41 East of the Willamette Meridian. (Same basis of bearing as survey numbers 22-86 and 29-86.)



### REFERENCE MATERIAL

- GLO contract number 235 by John H. Stone, dated July 6, 1875.
- GLO contract number 320 by Henry M. Thatcher, dated April 1, 1879.
- GLO contract number 355 by W. B. Barr, dated June 14, 1880.
- GLO contract number 683 by Alonzo Gesner, dated June 7, 1898.
- Union County monumentation records
- Survey number 22-86
- Survey number 29-86

NOTE: For monumentation information, see monumentation sheets filed separately



Closing corner previously monumented in original position. Intersection of section lines falls N 89° 45' 10" E, 21.69 feet from the monument. Distances along the range line are to the intersection point.

NOTE: Monument found is a witness corner. The bearing and distance shown is to the true corner which is North, 16.00 feet from the monument.

### NARRATIVE

This survey was done at the request of Guy Francy, representing Boise Cascade Corporation. Mr. Francy directed me to set the subdivisinal corners of Sections 30 and 31 as shown, along with the corners along the range line as shown.

The subdivision of Section 31 is based entirely on survey number 29-86, which also established the Southwest and Southeast corners and the North and South 1/4 corners of Section 31. The East 1/4 corner of Section 31 was monumented from original evidence by me at that time, but it was not shown on survey number 29-86. In order to set the subdivisinal corners of Section 31, I first had to locate the range line. I found the corners to Section 25, Township 3 South, Range 40 East as shown. This township is senior to Township 3 South, Range 41 East. I found the brass cap monument at the Northwest corner, set from original evidence, at the original closing corner position. This is offset from the range line by the bearing and distance shown. It is however the basis for the proportion along the North line of Section 31. In order to prevent confusion, I did not set a monument at the intersection point. I then subdivided these sections.

I could not find any original corners along the range line to the South and therefore establish these positions by proportion.

I find no other problems with this survey.

*Duane I. Griffith*  
 Duane I. Griffith, OPLS 644  
 Bagett, Griffith and Associates  
 P.O. Box 576  
 La Grande, Oregon

### LEGEND

- Found aluminum monument set by survey number 29-86
- Found brass cap monument as per Union County monumentation records
- ▲ Found aluminum monument as per Union County monumentation records
- ⊙ Found original GLO survey evidence and set a 2 1/2" x 30" aluminum monument
- ⊙ Set a 2 1/2" x 30" aluminum monument at position determined by survey
- ( ) Gesner survey record bearing and distance
- ( B ) Barr survey record bearing and distance
- ( S ) Stone survey record bearing and distance
- SFNF Corner searched for but not found
- Subdivision lot line
- ⓪ Lot number

**UNION COUNTY SURVEYOR**

Date Received 10-20-86

Date Filed 10-20-86

By G. LANGUITZ, DEPUTY

File No. 30-86

**REGISTERED PROFESSIONAL LAND SURVEYOR**

*Duane I. Griffith*

OREGON  
 JULY 10, 1984  
 DUANE I. GRIFFITH  
 644

<b>BAGETT - GRIFFITH &amp; ASSOCIATES</b> La Grande, Oregon		
Map of Survey		
Monumentation of selected corners in Sections 30 and 31, Township 3 South, Range 41 East, Willamette Meridian, and along the range line between Ranges 40 and 41 East in T3S and T4S, Willamette Meridian		
UNION COUNTY, OREGON		
SURVEYED FOR	Boise Cascade Corporation	
SURVEYED BY	d.i.g.	9/86
Scale: 1" = 1000'	Drawn by: R.G.R.	9/86