

RECORD OF SURVEY OF SECTION 34, T.5S., R.35E., & SECTION 2 T.6S., R.35 1/2 E., W.M., UNION COUNTY, OREGON.

SURVEY FOR THE UNITED STATES FOREST SERVICE, WALLOWA-WHITMAN NATIONAL FOREST, LAGRAUNDE RANGER DISTRICT.

SURVEYED UNDER CONTRACT NO. 53-0443-5-03152 ALSO KNOWN AS "LAST VEY CADASTRAL SURVEY"

SURVEY BY: SUTTON SURVEYING INC.
P.O. BOX 237 ELGIN, OREGON PHONE: 437-3936

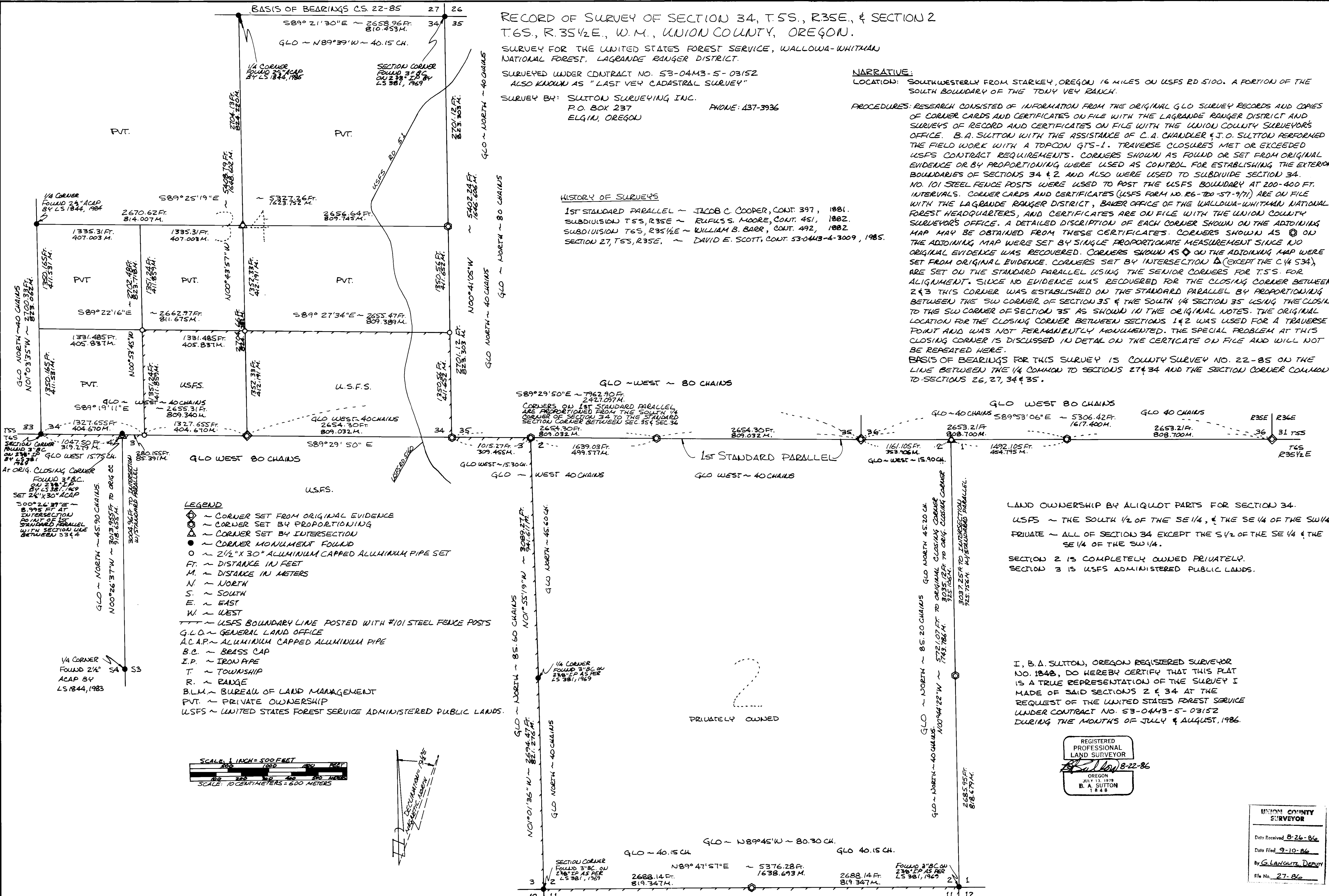
NARRATIVE:

LOCATION: SOUTHWESTERLY FROM STARKEY, OREGON 16 MILES ON USFS RD 5100. A PORTION OF THE SOUTH BOUNDARY OF THE TONY VEY RANCH.

PROCEDURES: RESEARCH CONSISTED OF INFORMATION FROM THE ORIGINAL GLO SURVEY RECORDS AND COPIES OF CORNER CARDS AND CERTIFICATES ON FILE WITH THE LAGRAUNDE RANGER DISTRICT AND SURVEYS OF RECORD AND CERTIFICATES ON FILE WITH THE UNION COUNTY SURVEYOR'S OFFICE. B.A. SUTTON WITH THE ASSISTANCE OF C.A. CHANDLER & J.O. SUTTON PERFORMED THE FIELD WORK WITH A TOPCON GTS-1. TRAVERSE CLOSURES MET OR EXCEEDED USFS CONTRACT REQUIREMENTS. CORNERS SHOWN AS FOUND OR SET FROM ORIGINAL EVIDENCE OR BY PROPORTIONING WERE USED AS CONTROL FOR ESTABLISHING THE EXTERIOR BOUNDARIES OF SECTIONS 34 & 2 AND ALSO WERE USED TO SUBDIVIDE SECTION 34. NO 101 STEEL FENCE POSTS WERE USED TO POST THE USFS BOUNDARY AT 200-400 FT. INTERVALS. CORNER CARDS AND CERTIFICATES (USFS FORM NO. 16-100-57-9/71) ARE ON FILE WITH THE LAGRAUNDE RANGER DISTRICT, BAKER OFFICE OF THE WALLOWA-WHITMAN NATIONAL FOREST HEADQUARTERS, AND CERTIFICATES ARE ON FILE WITH THE UNION COUNTY SURVEYOR'S OFFICE. A DETAILED DISCRPTION OF EACH CORNER SHOWN ON THE ADJOINING MAP MAY BE OBTAINED FROM THESE CERTIFICATES. CORNERS SHOWN AS (C) ON THE ADJOINING MAP WERE SET BY SINGLE PROPORTIONATE MEASUREMENT SINCE NO ORIGINAL EVIDENCE WAS RECOVERED. CORNERS SHOWN AS (D) ON THE ADJOINING MAP WERE SET FROM ORIGINAL EVIDENCE. CORNERS SET BY INTERSECTION (E) (EXCEPT THE C 1/4 S34), ARE SET ON THE STANDARD PARALLEL USING THE SENIOR CORNERS FOR T.5S. FOR ALIGNMENT. SINCE NO EVIDENCE WAS RECOVERED FOR THE CLOSING CORNER BETWEEN 2 & 3 THIS CORNER WAS ESTABLISHED ON THE STANDARD PARALLEL BY PROPORTIONING BETWEEN THE SW CORNER OF SECTION 35 & THE SOUTH 1/4 SECTION 35 USING THE CLOSING TO THE SW CORNER OF SECTION 35 AS SHOWN IN THE ORIGINAL NOTES. THE ORIGINAL LOCATION FOR THE CLOSING CORNER BETWEEN SECTIONS 1 & 2 WAS USED FOR A TRAVERSE POINT AND WAS NOT PERMANENTLY MONUMENTED. THE SPECIAL PROBLEM AT THIS CLOSING CORNER IS DISCUSSED IN DETAIL ON THE CERTIFICATE ON FILE AND WILL NOT BE REPEATED HERE. BASIS OF BEARINGS FOR THIS SURVEY IS COUNTY SURVEY NO. 22-85 ON THE LINE BETWEEN THE 1/4 COMMON TO SECTIONS 27 & 34 AND THE SECTION CORNER COMMON TO SECTIONS 26, 27, 34 & 35.

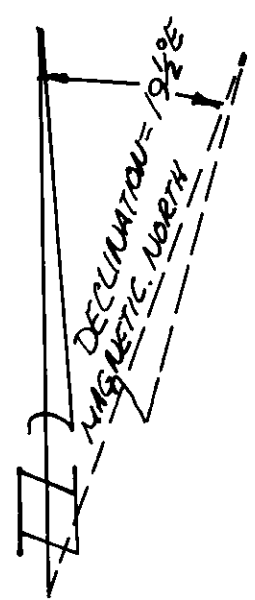
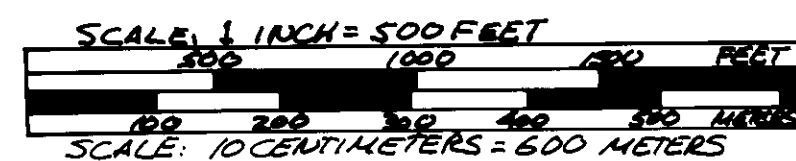
HISTORY OF SURVEYS

1ST STANDARD PARALLEL - JACOB C. COOPER, CONT. 397, 1881.
SUBDIVISION T.5S, R.35E - RUFUS S. MOORE, CONT. 451, 1882.
SUBDIVISION T.6S, R.35 1/2 E - WILLIAM B. BARR, CONT. 492, 1882.
SECTION 27, T.5S, R.35E. - DAVID E. SCOTT, CONT. 53-0443-4-3009, 1985.



LEGEND

- ⊙ ~ CORNER SET FROM ORIGINAL EVIDENCE
- ⊙ ~ CORNER SET BY PROPORTIONING
- ⊙ ~ CORNER SET BY INTERSECTION
- ~ CORNER MONUMENT FOUND
- ~ 2 1/2" X 30" ALUMINUM CAPPED ALUMINUM PIPE SET
- M. ~ DISTANCE IN FEET
- M. ~ DISTANCE IN METERS
- N. ~ NORTH
- S. ~ SOUTH
- E. ~ EAST
- W. ~ WEST
- ~ USFS BOUNDARY LINE POSTED WITH #101 STEEL FENCE POSTS
- G.L.O. ~ GENERAL LAND OFFICE
- A.C.A.P. ~ ALUMINUM CAPPED ALUMINUM PIPE
- B.C. ~ BRASS CAP
- I.P. ~ IRON PIPE
- T. ~ TOWNSHIP
- R. ~ RANGE
- B.L.M. ~ BUREAU OF LAND MANAGEMENT
- PVT. ~ PRIVATE OWNERSHIP
- USFS ~ UNITED STATES FOREST SERVICE ADMINISTERED PUBLIC LANDS.



LAND OWNERSHIP BY ALIQUOT PARTS FOR SECTION 34.
USFS - THE SOUTH 1/2 OF THE SE 1/4, & THE SE 1/4 OF THE SW 1/4
PRIVATE - ALL OF SECTION 34 EXCEPT THE S 1/2 OF THE SE 1/4 & THE SE 1/4 OF THE SW 1/4.
SECTION 2 IS COMPLETELY OWNED PRIVATELY.
SECTION 3 IS USFS ADMINISTERED PUBLIC LANDS.

I, B.A. SUTTON, OREGON REGISTERED SURVEYOR NO. 1848, DO HEREBY CERTIFY THAT THIS PLAT IS A TRUE REPRESENTATION OF THE SURVEY I MADE OF SAID SECTIONS 2 & 34 AT THE REQUEST OF THE UNITED STATES FOREST SERVICE UNDER CONTRACT NO. 53-0443-5-03152 DURING THE MONTHS OF JULY & AUGUST, 1986.

REGISTERED PROFESSIONAL LAND SURVEYOR
B.A. SUTTON
JULY 13, 1979
1848

UNION COUNTY SURVEYOR
Date Received 8-26-86
Date Filed 9-10-86
By G. LANGRISH, DEPUTY
File No. 27-86