

HISTORY OF SURVEYS

The Southwest corner of Section 31, Township 4 South, Range 41 East was originally established by John H. Stone under GLO contract number 235 dated July 6, 1875.

The South line and interior corners of Township 4 South, Range 41 East were originally established by Henry M. Thatcher under GLO contract number 320 dated April 1, 1879.

The Northwest corner of Section 22 was monumented from original GLO survey evidence by Gary L. Langlitz, OPLS 1099, on October 14, 1983.

The Northwest corner, North 1/4 corner and South 1/4 corner of Section 34 were monumented from original GLO survey evidence by the BLM in 1971.

NATIONAL FOREST LANDS

Section 15
Section 22
Section 27
The East half of Section 34

SURVEYOR'S STATEMENT

I, Duane I. Griffith, Registered Land Surveyor in the State of Oregon, hereby certify that this plat and the notes hereon, or attached, are a true and correct representation of the survey I made in June and July, 1986 at the request of the USDA, Forest Service, in accordance with the statutes of the State of Oregon, and with the articles of my contract.

This survey was performed using Zeiss Th-2 one second theodolites. The distances were measured with a Mac IE and Mac IH (infra-red) and a Geodimeter 76 (laser). The purpose of this survey was to establish and mark with steel fence posts, the National Forest boundary as shown, and also monument the South line of Township 4 South, Range 41 East as shown.

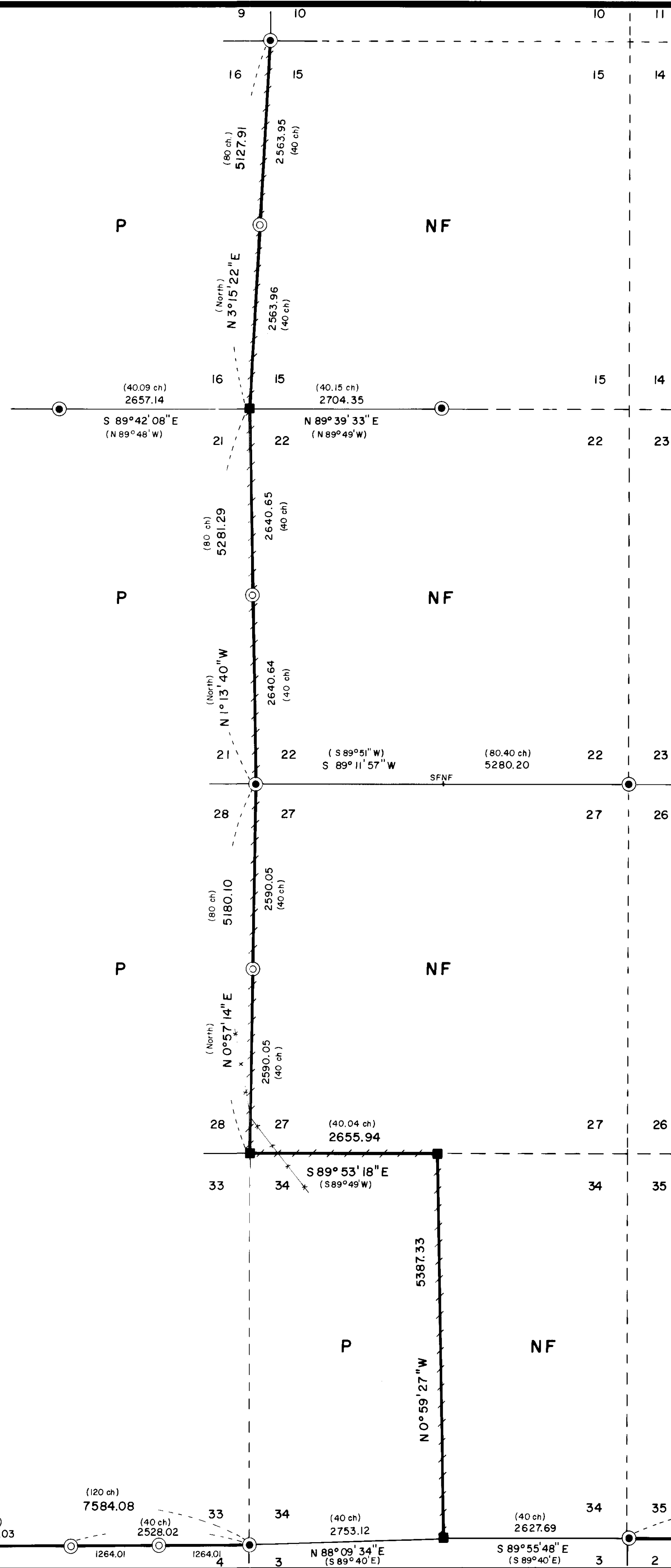
This survey is a continuation of survey number 19-86, in which I retraced the range line between Township 5 South, Ranges 40 and 41 East. I have now retraced the township line between Townships 4 and 5 South, Range 41 East. I have also retraced and posted the National Forest boundary as shown on the annexed plat. I find the corner common to Sections 15, 16, 21 and 22 to be quite a bit out of the general scheme. I therefore run East and West 1/2 mile to found 1/4 corners to verify its position. I find no other unusual conditions on the interior.

The South line of this township however presents some problems. In the retracement I found some rather rough distances and bearings as shown on the annexed plat. The Southwest corner of this township is the question. John H. Stone originally ran in from the West and set the Southwest corner of this township in 1875. He then ran North marking the range line between Township 4 South, Ranges 40 and 41 East. Then in 1879 Henry M. Thatcher ran North between Township 5 South, Ranges 40 and 41 East, to the corner to Townships 4 and 5 South, Ranges 40 and 41 East, closing with reasonable bearing and distance. He then ran from East to West between Townships 4 and 5 South, Range 41 East to the township corner, closing with reasonable bearing and distance again. He did call a house 4.9 chains East of the township corner.

In survey number 19-86, I retraced the range line North between Township 5 South, Ranges 40 and 41 East. This is not shown on the map of survey, as the corners were found and none were reset by survey. I found good alignment and distance, except the last half mile which is approximately 5 chains short to the township line. In this survey (22-86), I retraced the range line North between Ranges 40 and 41 East through Township 4 South. I find good alignment and distance from Stone's corner. This line is also not shown on this survey, as the corners were not reset by survey. I also retraced the township line East between Townships 4 and 5 South, Range 41 East. I find bearings and distances as shown on the annexed plat. At approximately 800 feet East of Mr. Stone's corner, I find a stone in a small mound of stone. This stone is 13x10x6 inches marked with 6 grooves on one side, 5/41 on one face and CC on the other face. The markings are identical with Mr. Thatcher's markings. The East-West position of this stone is in good alignment with the range line to the South. The house Mr. Thatcher calls in his notes will fit with the stone marked CC, and will not fit the corner set by Mr. Stone by about the same distance as they are apart.

It is my belief that Mr. Thatcher in fact set the stone marked CC as a closing corner on the township line to mark the Northwest corner of Township 5 South, Range 41 East. I do not know why he failed to so state. I have not set monuments at these two corners. I have submitted this to the BLM in hopes they will issue an opinion. My reason for including this information on this map is to make the facts I have found of public record.

Duane I. Griffith
Duane I. Griffith, OPLS 644
Baggett, Griffith and Associates
2006 Adams Avenue
La Grande, Oregon 97850



BASIS OF BEARING

Solar observation taken at a point 1087 feet North and 1256 feet West of the Southwest corner of Section 31, Township 4 South, Range 41 East of the Willamette Meridian as set by John H. Stone (see surveyor's statement)

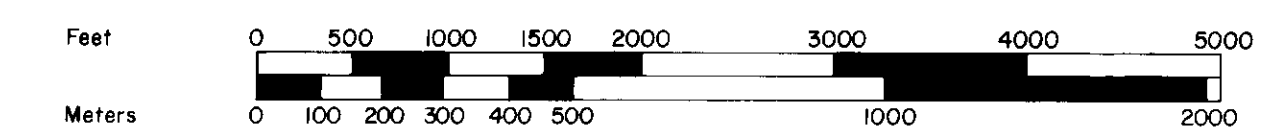
Date: June 17, 1986
Latitude: 45° 10' 07"
Longitude: 117° 45' 06"
Time: 14:00:08 (GCT)
Magnetic declination: 20° East

LEGEND

- Found brass cap monument set by others (see history of surveys)
- Found original GLO survey evidence (see surveyor's statement)
- Found original GLO survey evidence and set a 2 1/2" x 30" aluminum monument
- Set a 2 1/2" x 30" aluminum monument at position determined by survey
- SFNF: Corner searched for but not found
- Posted National Forest boundary line
- GLO record bearing and distance
- NF: National Forest lands
- P: Privately owned lands
- Existing fence line

NOTE: For monumentation information, see monumentation sheets filed separately

Scale: 1" = 1000'



1 Meter = 3.2808333 Feet

UNION COUNTY SURVEYOR
Date Received: 7-28-86
Date Filed: 8-19-86
By: G. LANGLITZ, DEPUTY
File No.: 22-16

OREGON
JULY 10, 1986
DUANE I. GRIFFITH
644

BAGETT - GRIFFITH & ASSOCIATES
La Grande, Oregon
Map of Survey
Location of National Forest boundary and monumentation of the South line of Township 4 South, Range 41 East, Willamette Meridian
UNION COUNTY, OREGON
SURVEYED FOR: Wallawa Whitman National Forest
SURVEYED BY: d.i.g.
Scale: 1" = 1000' Drawn by: R.G.R. 7-1986

R 40 E
R 41 E

