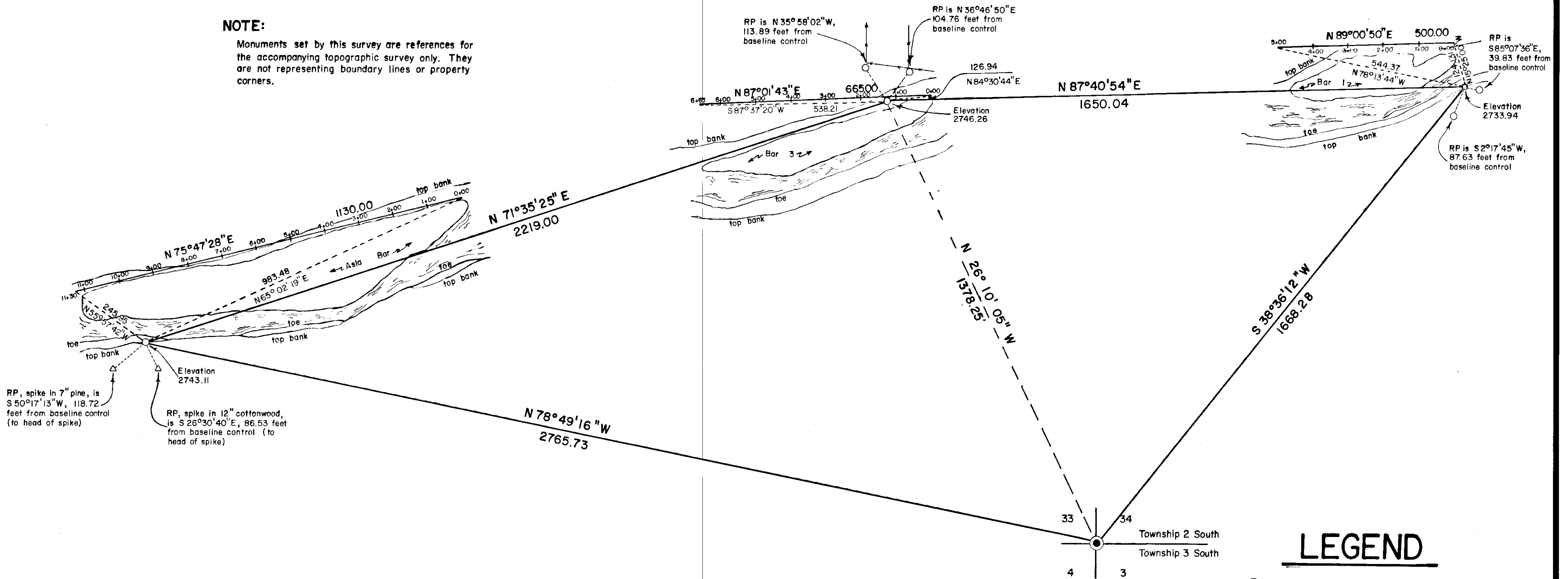


**NOTE:**

Monuments set by this survey are references for the accompanying topographic survey only. They are not representing boundary lines or property corners.



**NARRATIVE**

This survey was ordered by Harry Collman, owner of R.D. Mac, Inc.. The purpose of this survey was to comply with an order of the Division of State Lands as well as to comply with conditions set forth by the Union County Planning Commission for a permit to remove gravel from the Grande Ronde River by R.D. Mac, Inc.. The cross sections were run September 19 and 24, and October 5, 1985, prior to the removal of gravel. At this time the cross sections were run by stadia at all major breaks on each gravel bar. The elevations were based on 100.00 at each of the primary control points, and the end areas were computed in the office after drafting contours of each bar

and drawing a computed baseline and then drawing a perpendicular line through the various bars from the computed baseline. On November 18, we tied all of the major control points together, and showed ties to the section corner as shown, as well as place reference pins for future location of the control points. The elevations shown are based on the bench mark in the North end of the Grande Ronde River bridge (Highway 82), which is a brass disk marked O.S.H.D. bench mark F-673. The 1976 published elevation is 2740.70. (U.S.G.S. datum.)

State Lands Permit No. 4207



**BASIS OF BEARING**

The forward bearing as published by the U.S.C. and G.S. from  $\Delta$  College to  $\Delta$  Valley, dated 1946

UNION COUNTY SURVEYOR	
Date Received	12-16-85
Date Filed	12-30-85
B.G. LANGRISH, DEPUTY	
File No.	31-85

REGISTERED PROFESSIONAL LAND SURVEYOR
<i>Gregory T. Blackman</i>
OREGON JULY 13, 1973 GREGORY T. BLACKMAN 991

REFER TO NARRATIVE DRAWER 1/2

**LEGEND**

- Found concrete monument with brass cylinder as per Union County corner monumentation records
- Set 5/8"x30" iron pin with plastic cap marked BGA SURVEY MARKER
- Set 5/8"x30" square iron pin with plastic cap marked BGA SURVEY MARKER
- △ Set 50d spike in tree as described
- +—+— Baseline for cross section
- +—+— Existing fence line

<b>BAGETT - GRIFFITH &amp; ASSOCIATES</b> La Grande, Oregon		
Location of baselines for gravel bar topographic survey in the Southwest 1/4 of Section 34 and the Southeast 1/4 of Section 33, T2S R38E, W.M.		
UNION COUNTY, OREGON		
SURVEYED FOR	R. D. Mac, Inc.	
SURVEYED BY	G. T. B.	11 / 85
Scale: 1" = 200'	Drawn by: R. G. R.	12 / 85

RD MAC

ASLA BAR

12-2-85

GRIFF

GRIG

RICK

UNION COUNTY  
SHERIFF'S

Date Received 12-16-85

Date Filed 12-30-85

By G. LANGLITZ, Deputy

File No. Drawer 1/2 of

NARRATIVES

REFER TO SURVEY  
31-85