

National Forest Lands

Section 12		
The Southeast 1/4	162.81	acres
Section 13		
The East 1/2	320.05	acres
The East 1/2 of the Southwest 1/4	80.56	acres
The Northwest 1/4 of the Northwest 1/4	39.65	acres
Section 14		
The Southeast 1/4 of the Southeast 1/4	40.51	acres
The East 1/2 of the Southwest 1/4	80.51	acres
Section 23		
The North 1/2 of the Northeast 1/4	79.89	acres
The Southeast 1/4 of the Northeast 1/4	39.78	acres
The South 1/2	320.22	acres
The East 1/2 of the Northwest 1/4	80.80	acres
Section 24		
The East 1/2	319.83	acres
The Southwest 1/4	163.48	acres
The East 1/2 of the Northwest 1/4	80.37	acres
Total acres surveyed	1808.44	acres

NOTE:
National Forest lands include Sections 20, 25, 26, 27, 28 and 29. Exact acreage for these Sections cannot be computed due to lack of survey in these Sections.

Surveyor's Statement

I, Duane I. Griffith, Registered Land Surveyor in the State of Oregon, hereby certify that this plat and the notes hereon, or attached, are a true and correct representation of the survey I made in September and October, 1985, at the request of the USDA, Forest Service, in accordance with the statutes of the State of Oregon, and with the articles of my contract.

This survey was accomplished by establishing and coordinating control stations on prominent points in the area. I then tied in known GLO corners by sustained angulation from the solar base. On the basis of these coordinates of found GLO corners, I established search areas for corners not found. As corners were found and coordinated, new search areas were determined. Closed traverse method was used for locating and setting corners. I found the topography calls from the GLO notes were rather rough, especially the long ones. Topography calls along the Grande Ronde River were of little use due to construction along the river. I found no unusual conditions in this survey.

Duane I. Griffith
Duane I. Griffith, OPLS 644
Baggett, Griffith and Associates
2006 Adams Avenue
La Grande, Oregon

History of Surveys

The East line of Township 4 South, Range 35 East of the Willamette Meridian was established by Jacob C. Cooper under GLO contract number 397, dated July 1, 1881.

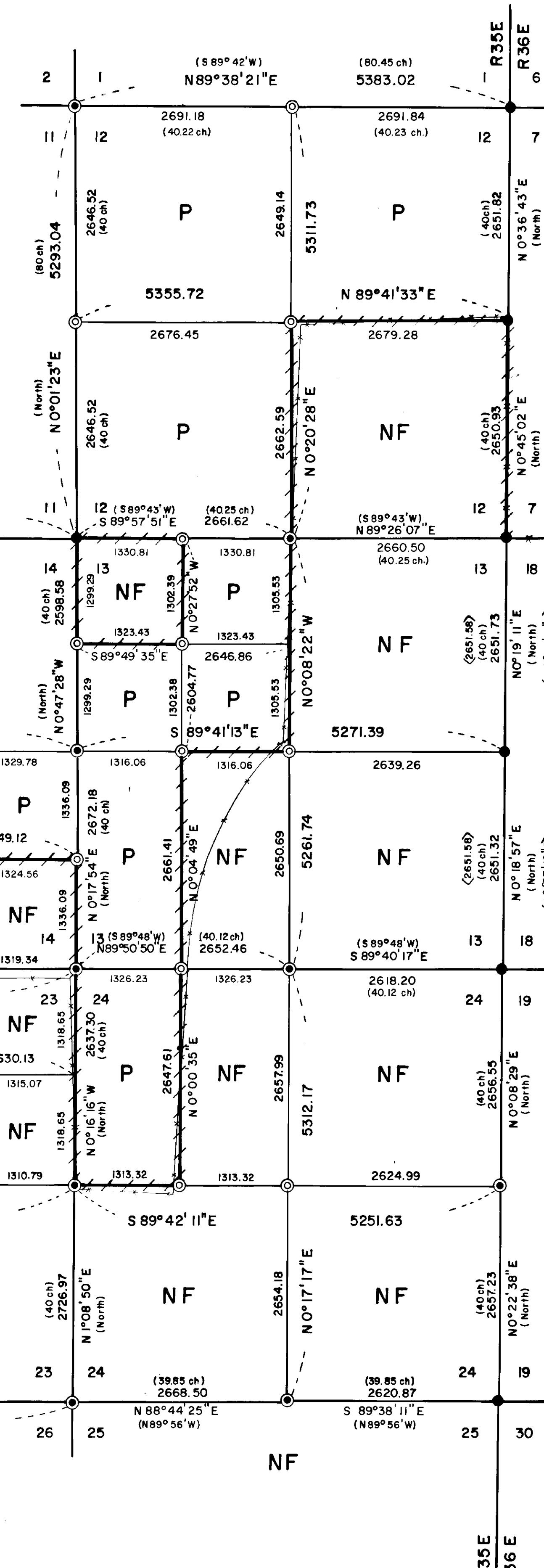
Township 4 South, Range 35 East of the Willamette Meridian was originally subdivided by Rufus S. Moore under GLO contract number 451, dated June 12, 1882.

The Northeast, Southeast and East 1/4 corners of Section 12 were remonumented from original GLO survey evidence by Gregory T. Blackman, OPLS 991, in 1978.

The Southwest corner of Section 12 was remonumented from original GLO survey evidence by James G. Voelz, OPLS 381, in 1969.

The Southeast and East 1/4 corners of Section 13 were remonumented by Union County survey number 96-80 done by Gary L. Langlitz, OPLS 1099, in 1980.

The Southeast corner of Section 24 was remonumented from original GLO survey evidence by Gary L. Langlitz, OPLS 1099, in 1980.



BASIS OF BEARING

Solar observation taken at a point 1128 feet South and 2169 feet West of the Southwest corner of Section 22, Township 4 South, Range 35 East of the Willamette Meridian. (Hour angle method)

Date: September 24, 1985
Latitude: 45° 11' 37"
Longitude: 118° 25' 54"
Time: 17:53:49 (G.C.T.)
Magnetic declination: 20° East

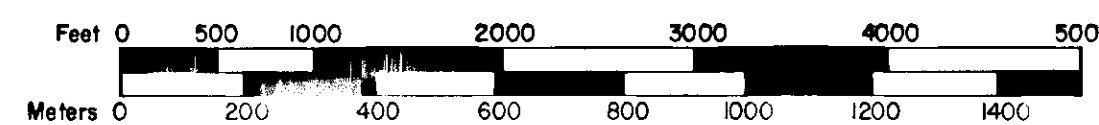
LEGEND

- Found brass cap monument set by others (see history of surveys and corner monumentation sheets filed separately)
- ⊙ Found original GLO survey corner evidence and set a 2 1/2" x 30" aluminum monument
- ⊙ Set 2 1/2" x 30" aluminum monument at position determined by survey
- () Original G.L.O. record bearing and distance
- Posted National Forest Boundary line
- NF National Forest lands
- P Privately owned lands
- < > Record bearing and distance of survey no. 96-80
- BLM BLM lands
- Existing fence line

NOTE:
For monumentation information, see monumentation sheets filed separately

REGISTERED
PROFESSIONAL
LAND SURVEYOR
Duane I. Griffith
OREGON
DATE: 10/15/84
DUANE I. GRIFFITH
644

Scale: 1" = 1000'



1 Meter = 3.2808333 Feet

UNION COUNTY
SURVEYOR
Date Rec'd: 12-5-85
Date Filed: 12-6-85
By: G. LANGLITZ, DEPUTY
File No.: 30-85

BAGGETT - GRIFFITH & ASSOCIATES		
La Grande, Oregon		
Map of Survey		
Location of National Forest boundary within a portion of Township 4 South, Range 35 East of the Willamette Meridian		
UNION COUNTY, OREGON		
SURVEYED FOR	Wallawa-Whitman National Forest	
SURVEYED BY	d.i.g.	9+10/85
Scale: 1" = 1000'	Drawn by: r.g.r.	11/85