

BASIS OF BEARING

Solar observation taken at the Northwest corner of Section 22, Township 3 South, Range 40 East of the Willamette Meridian.



LEGEND

- Found brass cap monument set by survey number 46-79
- Found brass cap monument as per Union County monumentation records
- ▲ Found aluminum monument set by survey number 26-85
- ⊙ Reset aluminum monument set by survey number 26-85 to true corner position
- ⊙ Set 2 1/2" x 30" aluminum monument at position determined by survey
- () GLO record bearing and distance

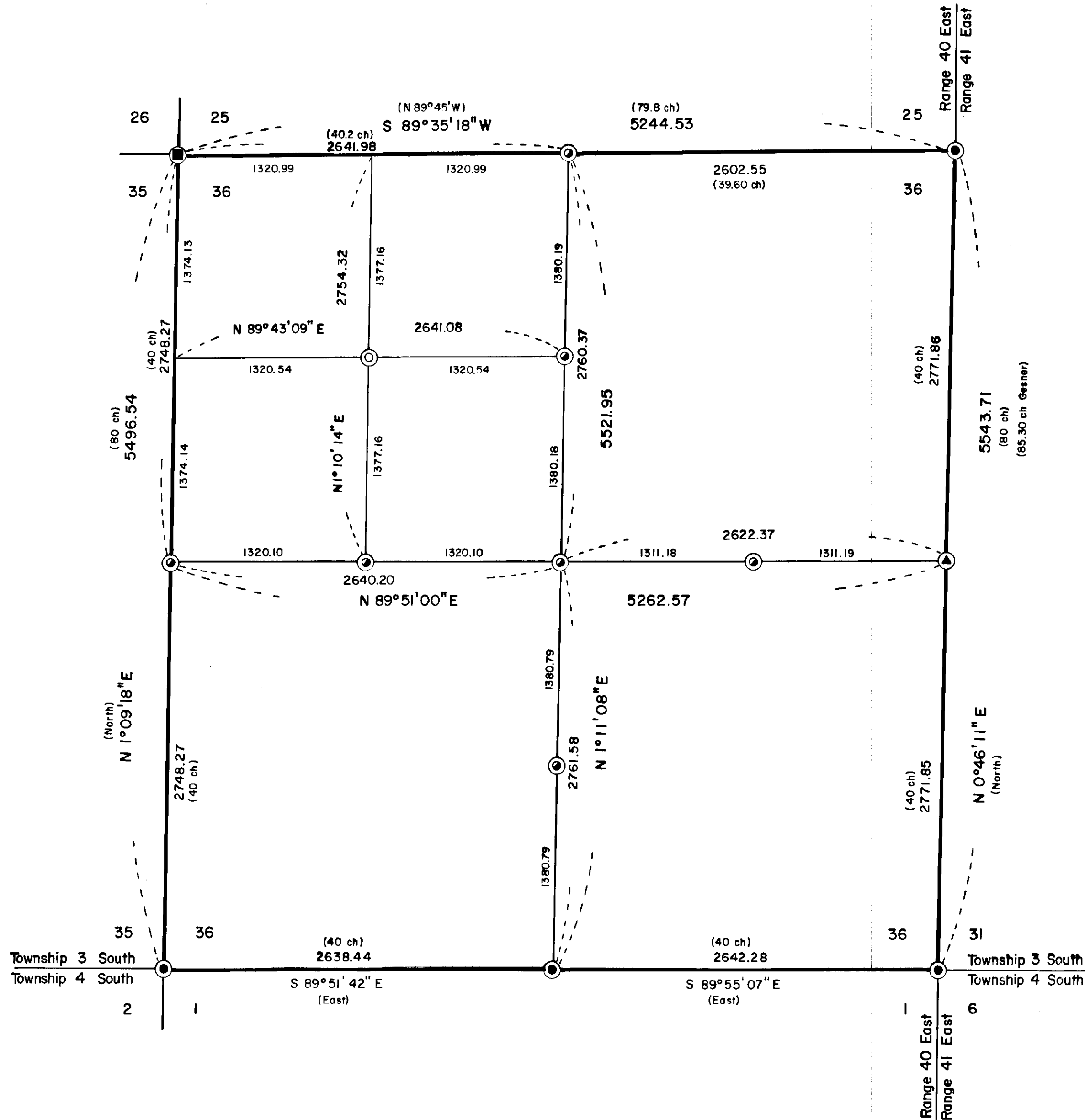
REFERENCE MATERIAL

- GLO contract number 102
- GLO contract by W.B. Barr circa 1880 (contract number not available)
- GLO contract number 683
- Survey number 46-79
- Survey number 26-85

NOTE:
For monumentation information, see monumentation sheets filed separately

NARRATIVE

This survey was done at the request of Mary Lewis, for Boise Cascade Corporation. She requested that we set the Northwest 1/16 corner of Section 36. I base this survey on survey number 26-85. However, a computation error in the position of the Northwest corner of Section 36 was discovered. The South and East lines of Section 36 are unaffected. The position of the remaining corners set by survey number 26-85 do change. I reset these corners to the true positions as shown. (For monumentation information, see monumentation sheets filed separately). I find no other problems with this survey.



UNION COUNTY SURVEYOR
Date Received 11-5-85
Date Filed 11-18-85
By G. LANGUITZ, DEPUTY
File No. 29-85

REGISTERED PROFESSIONAL LAND SURVEYOR
Gregory T. Blackman
OREGON
JUL 13 1973
GREGORY T. BLACKMAN
991

BAGETT - GRIFFITH & ASSOCIATES La Grande, Oregon Map of Survey		
Section 36, Township 3 South, Range 40 East, Willamette Meridian Cove		
UNION COUNTY, OREGON		
SURVEYED FOR	Boise Cascade Corporation	
SURVEYED BY	G.T.B.	10/85
Scale: 1" = 600'	Drawn by: R.G.R.	11/85