

RECORD OF SURVEY OF SECTIONS 24, 26 & 27, T. 5S., R. 35E., W. M., UNION COUNTY, OREGON.

SURVEY FOR THE UNITED STATES FOREST SERVICE, WALLOWA WHITMAN NATIONAL FOREST, LA GRANDE RANGER DISTRICT.

SURVEY PERFORMED UNDER CONTRACT NUMBER 53-0443-4-3009

SURVEY BY: SUTTON SURVEYING P.O. BOX 237 ELGIN, OREGON 97827 PHONE: 437-0810

NARRATIVE

LOCATION

SOUTHWEST FROM STARKEY OREGON APPROXIMATELY 13 MILES ON USFS RD 51 THE NORTH BOUNDARY OF THE TONY VEY RANCH.

PROCEDURES

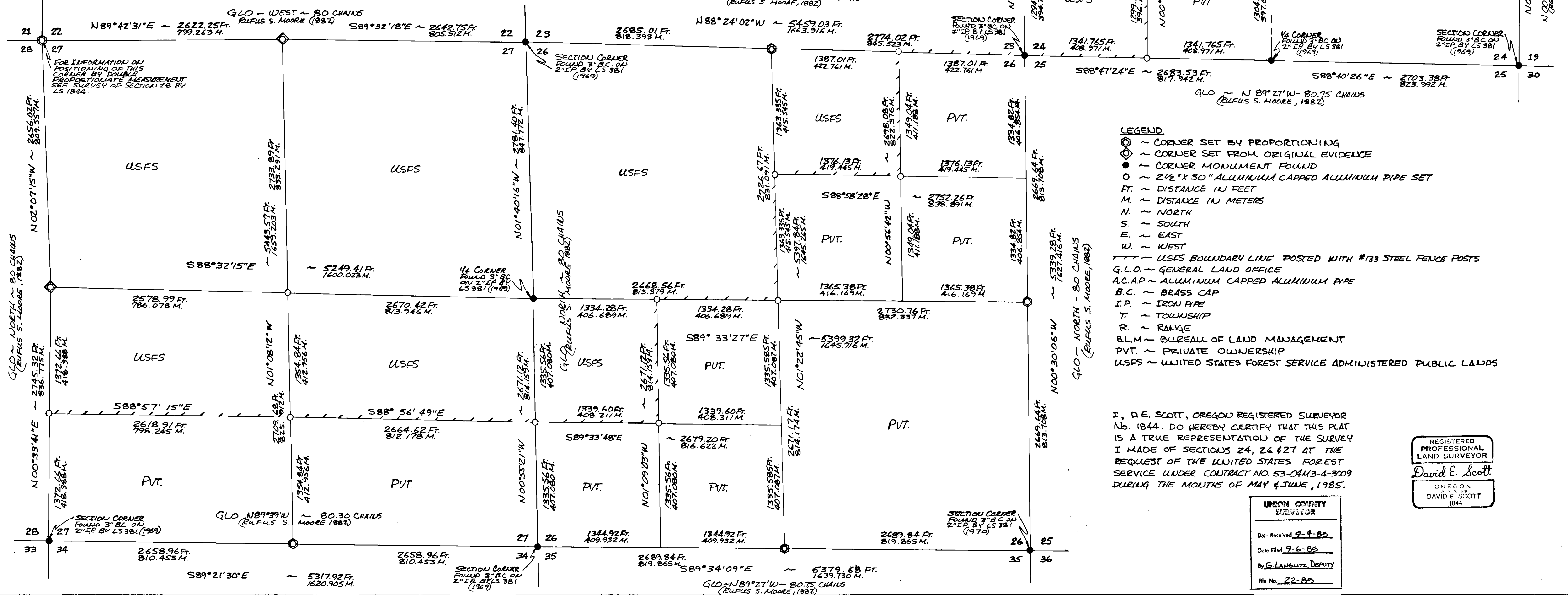
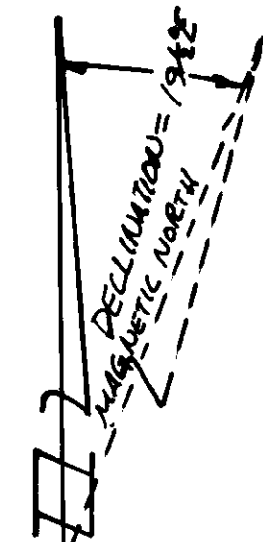
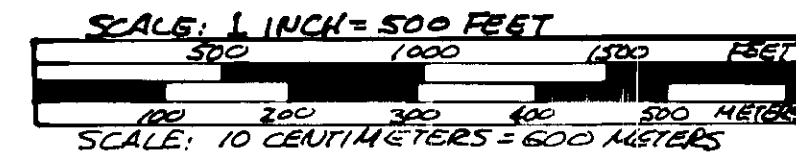
RESEARCH CONSISTED OF INFORMATION FROM ORIGINAL G.L.O. SURVEY RECORDS AND COPIES OF CORNER CARDS AND CERTIFICATES ON FILE WITH THE LA GRANDE RANGER DISTRICT AND SURVEYS OF RECORD AND CERTIFICATES ON FILE WITH THE UNION COUNTY SURVEYOR'S OFFICE. D.E. SCOTT, B.A. SUTTON WITH ASSISTANCE OF G. ARRAND, H. HAMERLHUCK & ILLIANE SCOTT, PERFORMED THE FIELD WORK WITH TOP CONUS GTS-1 & 10D. TRAVERSE CLOSURES MET OR EXCEEDED U.S.F.S. CONTRACT REQUIREMENTS. CORNERS SHOWN AS FOUND OR SET FROM ORIGINAL G.L.O. EVIDENCE WERE USED AS CONTROL FOR ESTABLISHING THE EXTERIOR BOUNDARIES OF SECTIONS 24, 26 & 27 ALSO WERE USED TO SUBDIVIDE THE 3 SECTIONS MENTIONED. NO. 133 STEEL FENCE POSTS WERE USED TO POST THE U.S.F.S. BOUNDARY AT 200-400 FT INTERVALS. CORNER CARDS FOR CORNERS INDICATED AS SET ON THE ADJOINING MAP ARE ON FILE WITH THE OFFICE OF THE USFS LA GRANDE RANGER DISTRICT. CERTIFICATES FOR THOSE CORNERS ARE ON FILE WITH THE UNION COUNTY SURVEYOR'S OFFICE. A DETAILED DESCRIPTION FOR EACH CORNER FOUND OR SET IS FOUND ON THESE CERTIFICATES (USFS FORM NO. R6-7100-57 3/71). CORNERS SHOWN AS (O) ON THE ADJOINING MAP WERE SET BY SINGLE PROPORTIONATE MEASUREMENT SINCE NO ORIGINAL EVIDENCE WAS FOUND. THE NORTH 1/4 SECTION 26 WAS SET AT THE PROPORTIONATE DISTANCE USING THE TERRAIN CALL FROM THE ORIGINAL FIELD NOTES. CORNERS SHOWN AS (D) ON THE ADJOINING MAP WERE SET FROM ORIGINAL EVIDENCE. BEARINGS FOR THIS SURVEY ARE BASED ON THE RECORD OF SURVEY NO. 2-85 DONE BY THIS FIRM IN NOV 1984 UNDER THIS SAME CONTRACT. THE SUBDIVISION OF T. 5S., R. 35E., WAS BY RUFUS S. MOORE UNDER CONTRACT NO. 451, DATED 8-1882.

LAND OWNERSHIP BY ALIQUOT PARTS

SECTION 24 - USFS ~ THE SW 1/4 EXCEPT THE SE 1/4 OF THE SW 1/4 AND THE NW 1/4. PRIVATE ~ THE EAST 1/2 & THE SE 1/4 OF THE SW 1/4

SECTION 27 - USFS ~ N 1/2 & N 1/4 OF THE S 1/2. PRIVATE ~ S 1/2 OF THE S 1/2

SECTION 26 - USFS ~ NW 1/4 OF NE 1/4, NW 1/4, & THE NW 1/4 OF THE SW 1/4. PRIVATE ~ THE NE 1/4 EXCEPT THE NW 1/4 OF THE NE 1/4, SE 1/4, THE SW 1/4 EXCEPT THE NW 1/4 OF THE SW 1/4



LEGEND

- (O) ~ CORNER SET BY PROPORTIONING
(D) ~ CORNER SET FROM ORIGINAL EVIDENCE
● ~ CORNER MONUMENT FOUND
○ ~ 2 1/2\"/>

I, D.E. SCOTT, OREGON REGISTERED SURVEYOR No. 1844, DO HEREBY CERTIFY THAT THIS PLAT IS A TRUE REPRESENTATION OF THE SURVEY I MADE OF SECTIONS 24, 26 & 27 AT THE REQUEST OF THE UNITED STATES FOREST SERVICE UNDER CONTRACT NO. 53-0443-4-3009 DURING THE MONTHS OF MAY & JUNE, 1985.

REGISTERED PROFESSIONAL LAND SURVEYOR David E. Scott OREGON 1844

UNION COUNTY SURVEYOR Date Received 9-9-85 Date Filed 9-6-85 By G. LANGRISH DEPUTY File No. 22-85