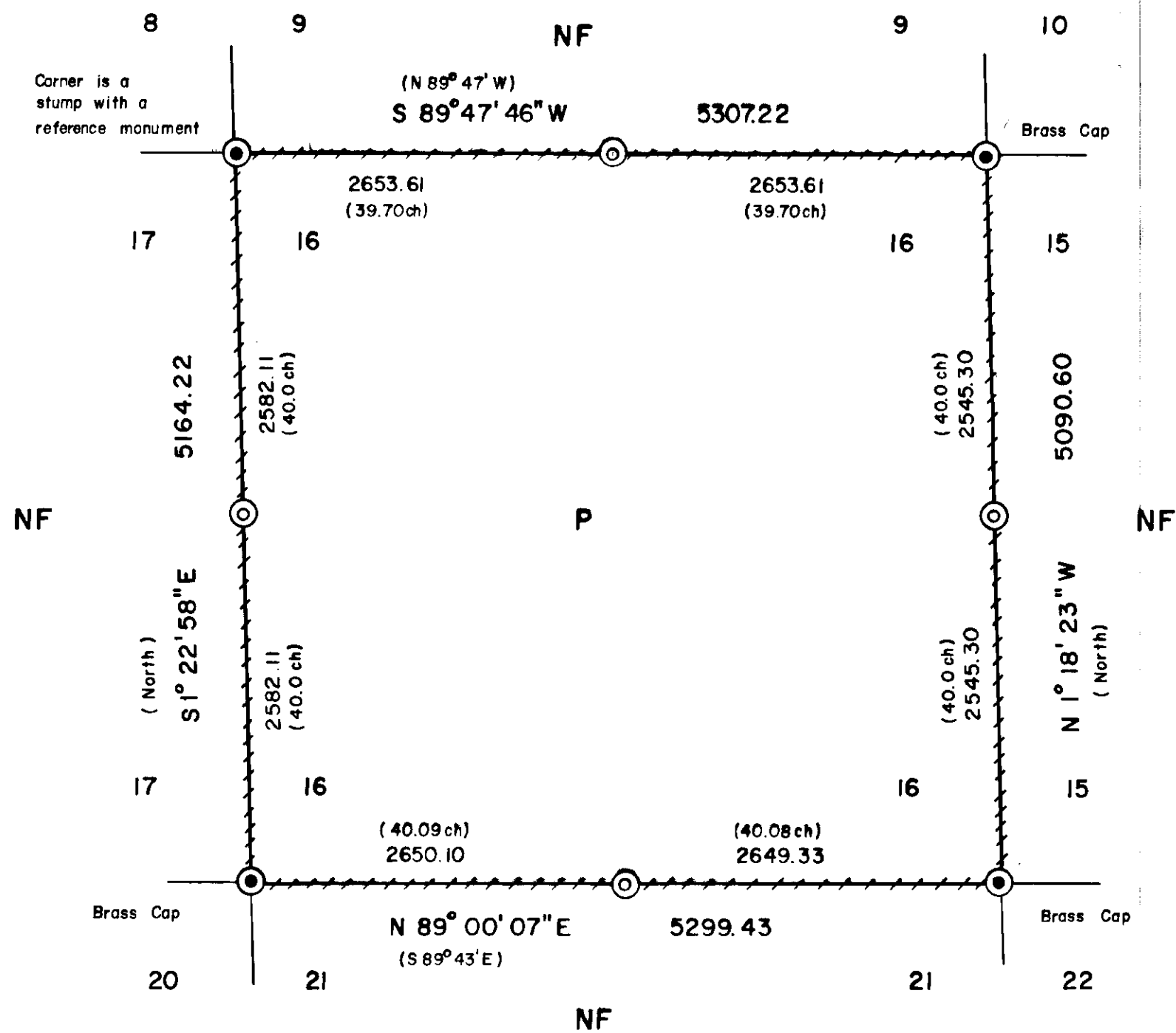


NATIONAL FOREST LANDS

ALL LAND SURROUNDING SECTION SIXTEEN



BASIS OF BEARING

A.M. Solar observation taken at a point 980 feet South and 450 feet East of the Northwest corner of Section 16, Township 4 North, Range 39 East of the Willamette Meridian (hour angle method)

Date July 2, 1985
 Latitude 45° 49' 43"
 Longitude 117° 57' 03"
 Time 14:46:53
 Magnetic declination 20° East

HISTORY OF SURVEYS

The exterior and subdivisional corners of Township 4 North, Range 39 East, W.M. were originally established by Frank Campbell under GLO contract number 498 dated March 10, 1884.

The four Section corners of Section 16 were remonumented by Jim Buisman in 1979.

LEGEND

- ⊙ Found corner monument set by others (see history of surveys and remonumentation sheets filed separately)
- ⊙ Set 2 1/2" x 30" aluminum monument at proportionate position.
- () Record GLO survey bearing and distance
- Posted National Forest Boundary line
- NF National Forest lands
- P Privately owned lands

SURVEYOR'S STATEMENT

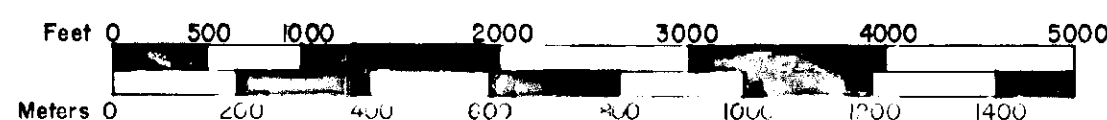
I, Gregory T. Blackman, Registered Land Surveyor in the State of Oregon, hereby certify that this plat and the notes hereon, or attached, are a true and correct representation of the survey I made in July of 1985, at the request of the USDA Forest Service, in accordance with the statutes of the State of Oregon, and with the articles of my contract.

I surveyed around the exterior of the section from brass cap to brass cap by a closed random traverse. I find no unusual conditions on this survey.

NOTE:

For monumentation information, see monumentation sheets filed separately.

Scale: 1" = 1000'



1 Meter = 3.2808333 Feet

UNION COUNTY SURVEYOR

Date Received 7-23-85

Date Filed 8-7-85

G. LANGLITZ, DEPUTY

File No. 17-85

REGISTERED PROFESSIONAL LAND SURVEYOR

Gregory T. Blackman

OREGON JULY 13, 1973

GREGORY T. BLACKMAN

BAGETT - GRIFFITH & ASSOCIATES
Oregon

Map of Survey

LOCATION OF THE EXTERIOR LINES OF SECTION 16, T. 4 N., R. 39 E., W.M.

UNION COUNTY, OREGON

SURVEYED FOR	UMATILLA NATIONAL FOREST	
SURVEYED BY	G.T.B.	7-85
Scale: 1"=1000'	Drawn by: A.R.C.	7-85