

PLAT OF SURVEY OF SECTIONS 24, 25, 26, 35 & 36 T.5S., R.34E., W.M., UNION CO., ORE., FOR THE U.S. FOREST SERVICE, WALLOWA-WHITMAN NATIONAL FOREST

SURVEY PERFORMED UNDER CONTRACT NO. 53-0443-3-2940

BY: SUTTON SURVEYING
P.O. BOX 237 437-0810
ELGIN, OREGON 97827

NARRATIVE:

LOCATION:

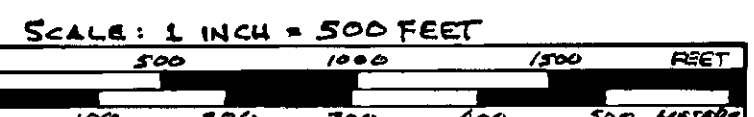
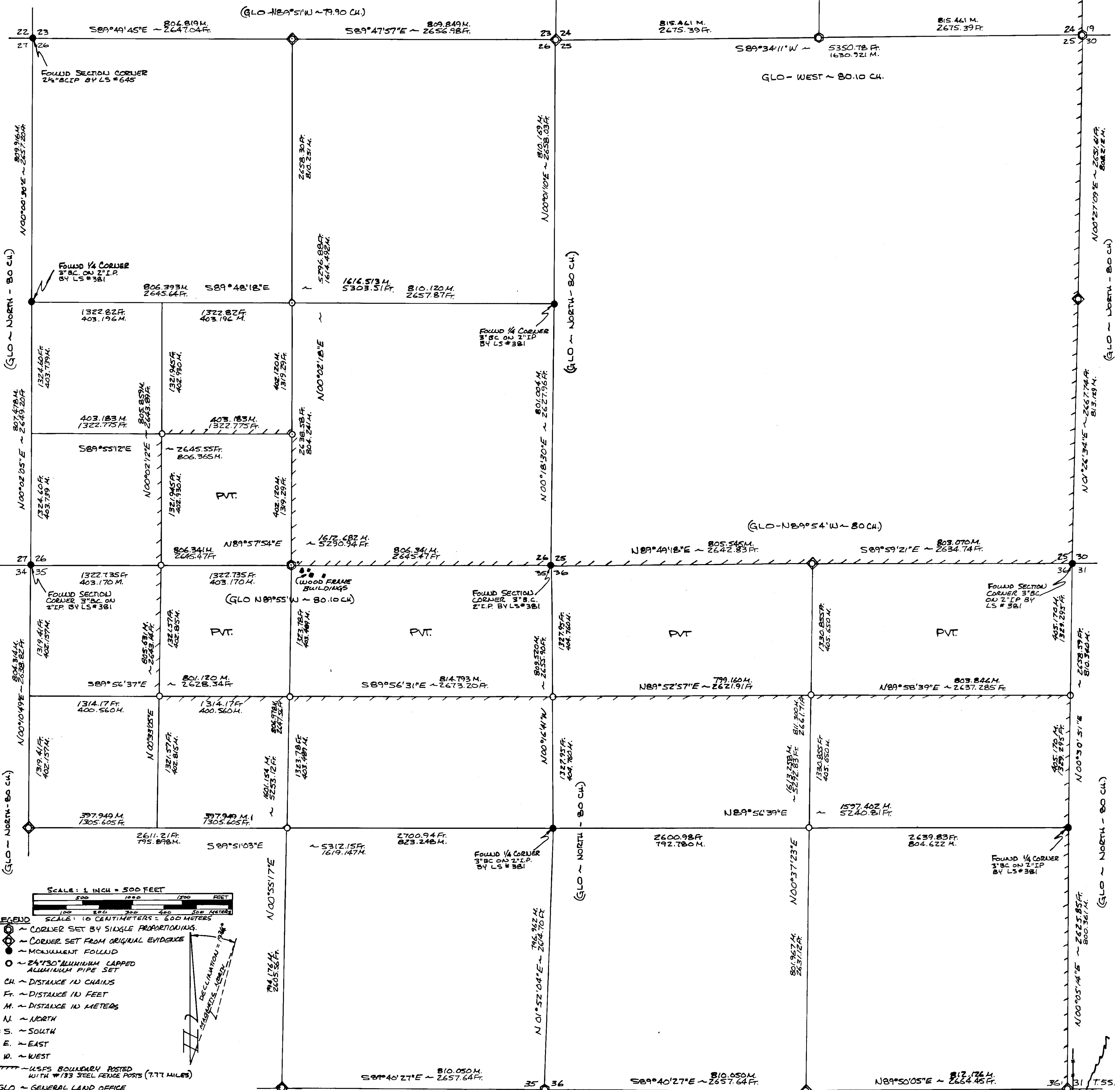
SOUTH WEST OF STARKEY, OREGON ON USFS ROAD 51 ABOUT 13 MILES, THE WEST & SOUTH BOUNDARIES OF THE TONY VEY RANCH.

PROCEDURES:

RESEARCH CONSISTED OF INFORMATION FROM ORIGINAL G.L.O. SURVEY RECORDS AND COPIES OF CORNER CARDS AND CERTIFICATES ON FILE WITH THE LAGRANDE RANGER DISTRICT OF THE U.S.F.S., SURVEYS OF RECORD ON FILE WITH THE UNION COUNTY SURVEYORS OFFICE. D.E. SCOTT, R.L.S. 1844, WITH THE ASSISTANCE OF DUANE SCOTT PERFORMED THE FIELD WORK WITH A TOPCON GTS 10D. TRAVERSE CLOSURES MET OR EXCEEDED USFS CONTRACT REQUIREMENTS. CORNERS SHOWN AS FOUND OR SET FROM ORIGINAL EVIDENCE WERE USED AS CONTROL FOR ESTABLISHING THE EXTERIOR BOUNDARIES OF THE ABOVE LISTED SECTIONS AND FOR SUBDIVIDING SECTIONS 24, 26, 35 & 36. SIX FT. LONG #133 STEEL FENCE POSTS WERE USED TO POST THE USFS BOUNDARY AT 200-400 FT. INTERVALS. CORNER CARDS FOR CORNERS INDICATED AS SET ON THE ADJOINING MAP ARE ON FILE WITH THE LAGRANDE RANGER DISTRICT OF THE USFS. CERTIFICATES FOR THOSE CORNERS ARE ON FILE WITH THE UNION COUNTY SURVEYOR. A DETAILED DESCRIPTION OF CORNER MONUMENT AND ACCESSORIES FOR EACH CORNER FOUND OR SET IS FOUND ON THOSE CERTIFICATES (USFS FORM NO. R6-7100-57 (971)). CORNERS SHOWN AS (C) ON THE ADJOINING MAP WERE SET BY SINGLE PROPORTIONING SINCE NO ORIGINAL EVIDENCE FROM THE ORIGINAL SURVEY WAS RECOVERED. CORNERS SHOWN AS (D) ON THE ADJOINING MAP WERE SET FROM ORIGINAL EVIDENCE. BEARINGS FOR THIS SURVEY ARE BASED ON SOLAR OBSERVATION. THE BEARING DISCREPANCY WITH THE SURVEY OF SECTION 13 BY LS 645 WAS NOTED AND OUR BEARINGS WERE RECHECKED TO INSURE ACCURACY. THE ORIGINAL SURVEY OF THE EAST AND SOUTH BOUNDARIES OF T.5S., R.34E., WAS BY J. COOPER UNDER CONTRACT NO. 397 AND APPROVED 4-5-1882. THE ORIGINAL SUBDIVISION OF T.5S., R.34E., WAS BY R. MOORE UNDER CONTRACT NO. 451 APPROVED 2-1-1884.

NARRATIVE CONTINUED ON PAGE 2 OF 2

NOTE: SOLAR OBSERVATION TAKEN IN VICINITY OF THE SW CORNER OF SECTION 24.



- LEGEND
- CORNER SET BY SINGLE PROPORTIONING
- CORNER SET FROM ORIGINAL EVIDENCE
- MONUMENT FOUND
- 2 1/2\"/>

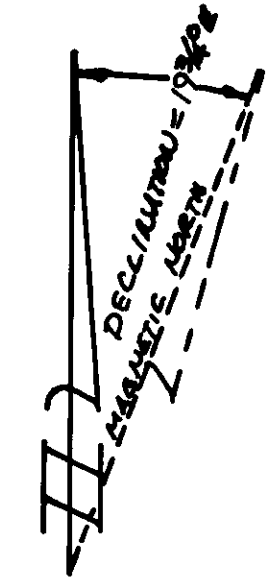
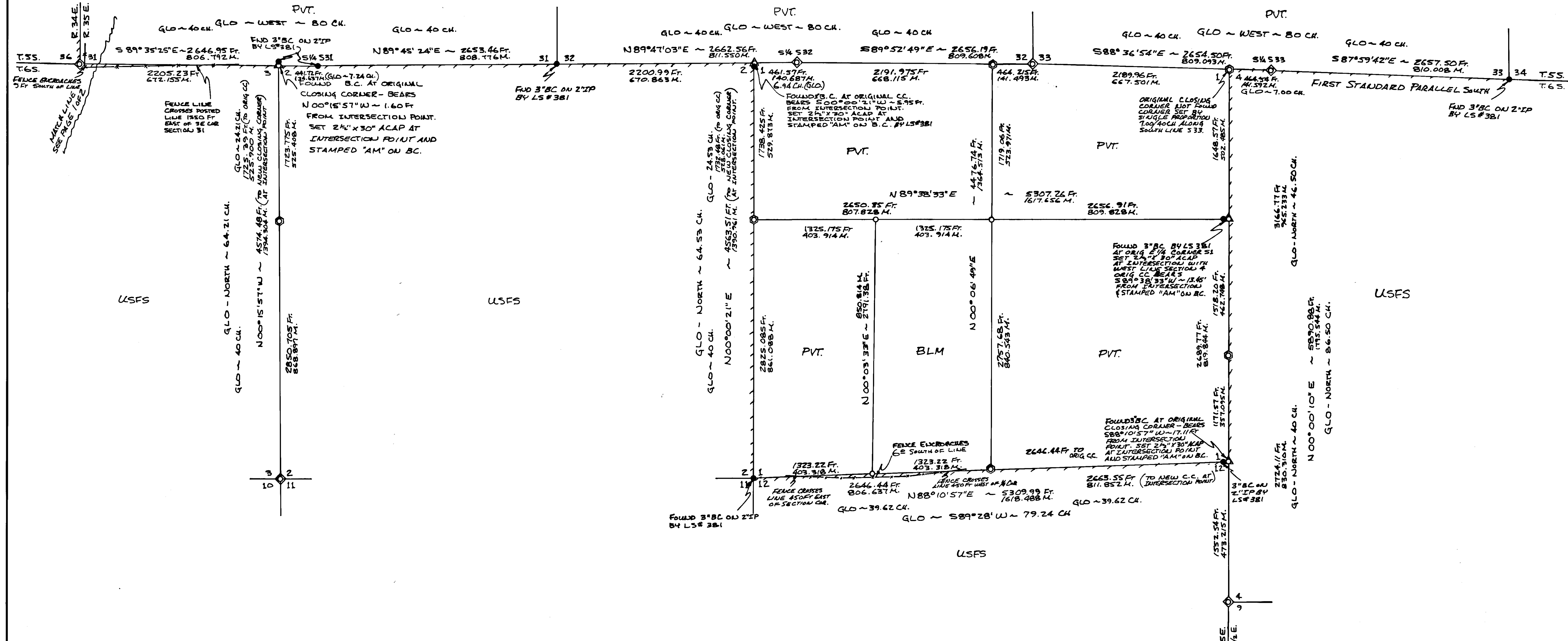
I, D.E. SCOTT, OREGON REGISTERED LAND SURVEYOR No. 1844 DO HEREBY CERTIFY THAT THIS PLAT IS A TRUE REPRESENTATION OF THE SURVEY I MADE, AT THE REQUEST OF THE U.S. D.A. FOREST SERVICE, OF SECTIONS 24, 25, 26, 35 & 36 T.5S., R.34E., W.M., UNION CO., ORE. DURING THE MONTHS OF JULY & AUGUST 1984.

REGISTERED PROFESSIONAL LAND SURVEYOR
David E. Scott 9-10-84
DAVID E. SCOTT
1844

UNION COUNTY SURVEYOR
Date Received 10-11-84
Date Filed 10-16-84
By G. Langate, Deputy
File No. 47-84

PLAT OF SURVEY OF SECTION 1, T.6S., R.35E., W.M., UNION COUNTY, OREGON TOGETHER WITH THE FIRST STANDARD PARALLEL SOUTH ACROSS THE SOUTH LINE OF SECTIONS 31, 32, & 33, T.5S., R.35E., W.M., UNION COUNTY, OREGON.

NOTE: BASIS OF BEARINGS FOR PAGE 2 IS BY THE SOLAR OBSERVATION TAKEN AT THE SW CORNER OF SECTION 24 AS SHOWN ON PAGE 1.



LEGEND

- ⊙ ~ CORNER SET BY SINGLE PROPORTIONING
- ⊕ ~ CORNER SET FROM ORIGINAL EVIDENCE
- ⊗ ~ CORNER SET BY INTERSECTION
- ▲ ~ MONUMENT FOUND
- ~ 2 1/2" X 30" ALUMINUM CAPPED ALUMINUM PIPE SET
- CH ~ DISTANCE IN CHAINS FROM ORIGINAL SURVEY
- FT ~ DISTANCE IN FEET
- M ~ DISTANCE IN METERS
- N ~ NORTH
- S ~ SOUTH
- E ~ EAST
- W ~ WEST
- TTT ~ USFS BOUNDARY POSTED WITH #73 STEEL FENCE POSTS (4 TO MILES)
- GLD ~ GENERAL LAND OFFICE
- ACAP ~ ALUMINUM CAPPED ALUMINUM PIPE
- T ~ TOWNSHIP
- R ~ RANGE
- FD ~ FOUND
- BC ~ BRASS CAP
- IP ~ IRON PIPE
- BCIP ~ BRASS CAPPED IRON PIPE
- BLM ~ BUREAU OF LAND MANAGEMENT
- PVT. ~ PRIVATE OWNERSHIP
- USFS ~ UNITED STATES FOREST SERVICE ADMINISTERED LANDS.
- — — ~ FENCE LINE

I, D. E. SCOTT, OREGON REGISTERED SURVEYOR NO. 1844, DO HEREBY CERTIFY THAT THIS PLAT IS A TRUE REPRESENTATION OF THE SURVEY I MADE OF SECTION 1 AND THE 1ST STANDARD PARALLEL SOUTH AS SHOWN ABOVE, DURING THE MONTHS OF AUGUST & SEPTEMBER OF 1984. THIS SURVEY WAS DONE AT THE REQUEST OF USDA FOREST SERVICE.

NOTE: THIS SURVEY IS A CONTINUATION TO THE EAST FROM THE S.E. CORNER OF SECTION 36 AS SHOWN ON PAGE 1 OF 2, THIS SURVEY.

UNION COUNTY SURVEYOR
Date Received 10-11-84
Date Filed 10-16-84
By G. LANGLITZ, DEPUTY
File No. 47-84

REGISTERED PROFESSIONAL LAND SURVEYOR
David E. Scott 9-10-84
OREGON 1984
DAVID E. SCOTT
1844

NARRATIVE CONTINUED FROM PAGE 1 OF 2

SECTION 1 WAS SURVEYED AND SUBDIVIDED AS SHOWN ON THE ADJOINING MAP. CORNERS INDICATED AS FOUND (⊙) OR CORNERS SET FROM ORIGINAL EVIDENCE (⊕) WERE USED FOR CONTROL FOR SETTING PROPORTIONED (⊗) INTERSECTIONS (Δ), AND SUBDIVISIONAL (○) CORNERS AS SHOWN ON THE ADJOINING MAP. THE DISTANCES ALONG THE NORTH LINE OF SECTION 1 ON THE STANDARD PARALLEL WERE REDUCED TO CARDINAL AND THE NORTH QUARTER CORNER WAS SET MIDWAY BETWEEN THE CLOSING CORNERS AT THE NE & NW CORNERS OF SECTION 1 ACCORDING TO INSTRUCTIONS FOUND IN SECTION 3-51 OF THE BLM MANUAL. THE BASIS OF BEARINGS FOR THIS SURVEY IS BY SOLAR OBSERVATION. DETAILED DESCRIPTIONS OF EACH CORNER WITH ITS ACCESSORIES MAY BE FOUND ON CERTIFIED RECORDS OF LAND CORNER MONUMENTATION ON FILE WITH THE UNION COUNTY SURVEYOR. THE ORIGINAL SURVEY SUBDIVIDING T.6S., R.35E. WAS BY HERMAN D. GRADON UNDER CONTRACT NO. 499, APPROVED 11-24-1884. THE SENIOR SURVEY ADJOINING THE EAST BOUNDARY OF SECTION 1 WAS BY, E. MC CORNACK UNDER CONTRACT NO. 398 APPROVED 1-09-1883. THE STANDARD PARALLEL WAS SURVEYED BY J. COOPER UNDER CONTRACT NO. 397 APPROVED 4-5-1882. ALL ALIQUOT PARTS OF SECTION 1 EXCEPT THE EAST HALF OF THE SW 1/4 ARE PRIVATELY OWNED WHICH IS BLM.