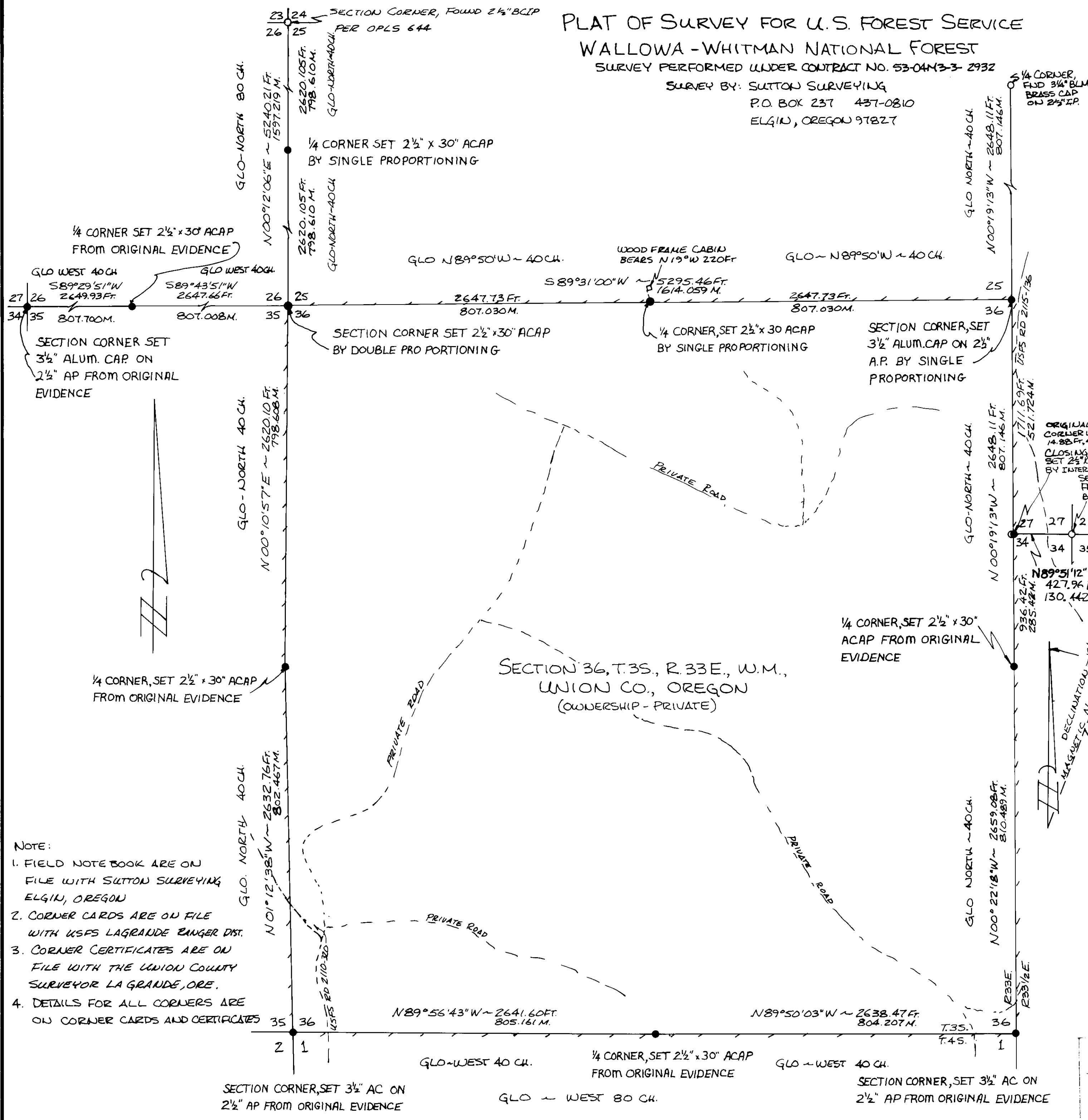


PLAT OF SURVEY FOR U.S. FOREST SERVICE
 WALLOWA-WHITMAN NATIONAL FOREST
 SURVEY PERFORMED UNDER CONTRACT NO. 53-04M3-3-2932
 SURVEY BY: SUTTON SURVEYING
 P.O. BOX 237 437-0810
 ELGIN, OREGON 97827

NARRATIVE

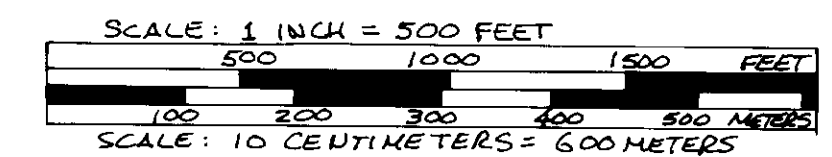
LOCATION:
 SECTION 36 IS LOCATED NORTH OF USFS RD. 2110 ON RD. 2110-320 APPROXIMATELY 1 1/2 MILES.

PROCEDURES:
 RESEARCH CONSISTED OF INFORMATION FROM ORIGINAL SURVEY RECORDS AND CORNER CARDS AND CERTIFICATES ON FILE WITH THE LAGRADE OFFICE OF THE U.S.F.S. COPIES OF CORNER CERTIFICATES ON FILE WITH UNION CO. SURVEYOR WERE SUPPLIED BY THE FOREST SERVICE. B.A. SUTTON, RLS 1848, WITH THE ASSISTANCE OF D.E. SCOTT, RLS 1844 AND C.N. PETZ PERFORMED THE FIELD WORK WITH A TOPCON GTS 1. TRAVERSE CLOSURES MET OR EXCEEDED USFS CONTRACT REQUIREMENTS. CORNERS INDICATED AS FOUND OR SET FROM ORIGINAL EVIDENCE ON THE ADJOINING MAP WERE USED AS CONTROL FOR ESTABLISHING THE EXTERIOR BOUNDARY OF SECTION 36. SIX FOOT LONG #133 STEEL FENCE POST WERE USED TO POST THE U.S.F.S. BOUNDARY LINES AT 200-400 FEET ± INTERVALS. CORNER CARDS ARE ON FILE WITH THE WALLOWA-WHITMAN NATIONAL FOREST HEADQUARTERS AND THE LAGRADE RANGER DISTRICT OFFICE FOR THOSE CORNERS INDICATED AS SET ON THE ADJOINING MAP. AT THE NE CORNER OF SECTION 36 I FOUND NO ORIGINAL EVIDENCE SO THIS CORNER WAS SINGLE PROPORTIONED BETWEEN 1/4 CORNERS TO THE NORTH & SOUTH. THE NW CORNER IS SIMILAR EXCEPT THAT AREA WAS CLEARCUT RECENTLY. I DOUBLE PROPORTIONED IT IN & CHECKED TERRAIN CALLS TO THE SOUTH & EAST. THESE FIT CLOSELY TO THE ESTABLISHED POSITION. THE 1/4 CORNER COMMON TO SECTION 26 & 25 IS A SIMILAR SITUATION AS IT WAS CLEARCUT LAST YEAR. THE 1/4 CORNER WAS SET BY SINGLE PROPORTIONING, BASIS OF BEARINGS FOR THIS SURVEY IS BY SOLAR OBSERVATION. THE ORIGINAL SURVEY ON THE TOWNSHIP LINE BETWEEN T3S & T4S WAS PERFORMED BY GEORGE S. PERSHIN UNDER CONTRACT NO. 410 DATED JULY 28, 1881. THE ORIGINAL SURVEY FOR THE REMAINDER OF SECTION 36 WAS PERFORMED BY RUFUS S. MOORE UNDER CONTRACT NO. 451 DATED JUNE 12, 1882.



- NOTE:
1. FIELD NOTE BOOK ARE ON FILE WITH SUTTON SURVEYING ELGIN, OREGON
 2. CORNER CARDS ARE ON FILE WITH USFS LAGRADE RANGER DIST.
 3. CORNER CERTIFICATES ARE ON FILE WITH THE UNION COUNTY SURVEYOR LA GRANDE, ORE.
 4. DETAILS FOR ALL CORNERS ARE ON CORNER CARDS AND CERTIFICATES

- LEGEND:
- | | |
|-------------------------------------------------------------|--------------------------------------|
| CH. ~ DISTANCE IN CHAINS | Ft. ~ DISTANCE IN FEET |
| M. ~ DISTANCE IN METERS | T. ~ TOWNSHIP |
| N ~ NORTH | R. ~ RANGE |
| S ~ SOUTH | FND ~ FOUND |
| E ~ EAST | BC ~ BRASS CAP |
| W ~ WEST | IP ~ IRON PIPE |
| ----- ~ USFS BOUNDARY POSTED | ACAP ~ ALUMINUM CAPPED ALUMINUM PIPE |
| GLO ~ GENERAL LAND OFFICE | BLM ~ BUREAU OF LAND MAN. |
| ○ ~ INDICATES MONUMENT FOUND | ● ~ INDICATES MONUMENT SET |
| AC ~ ALUMINUM CAP | AP ~ ALUMINUM PIPE |
| SECTION 36 IS PRIVATELY OWNED LAND SURROUNDED BY USFS LAND. | |



UNION COUNTY SURVEYOR

Date Received 7-11-84

Date Filed 7-16-84

By G. LANGRITZ, DEPUTY

File No. 30-84

I, B. A. SUTTON, REGISTERED LAND SURVEYOR No. 1848, DO HEREBY CERTIFY THAT THIS PLAT IS A TRUE REPRESENTATION OF THE SURVEY I MADE OF SEC. 36 DURING THE MONTHS OF DEC. 1983 & MAY, JUNE, 1984.

REGISTERED PROFESSIONAL SURVEYOR
 B. A. Sutton 6-27-84
 REGION JULY 9, 1976
 SUTTON