

PLAT OF SURVEY FOR THE U.S. FOREST SERVICE WALLOWA-WHITMAN NATIONAL FOREST

SURVEY PERFORMED UNDER CONTRACT No. 53-04M3-3-2932

SURVEY BY: SUTTON SURVEYING
P.O. BOX 237 437-0810
ELGIN, OREGON 97827

NARRATIVE

LOCATION:

THE SOUTH LINE OF SECTION 32 IS LOCATED 5 MILES NORTH OF STATE HIGHWAY NO. 244 AND 1 MILE EAST OF USFS RD 21.

PROCEDURES:

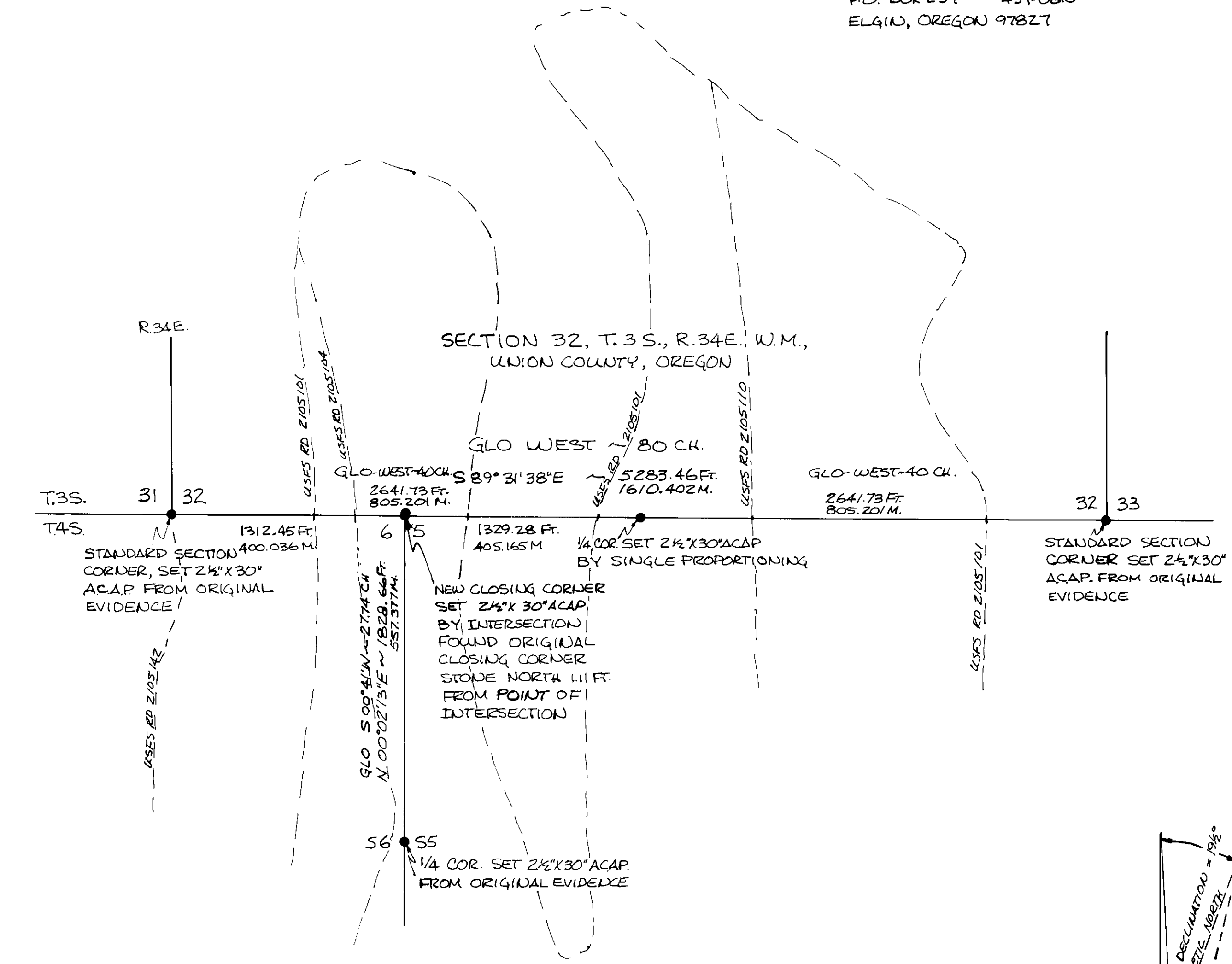
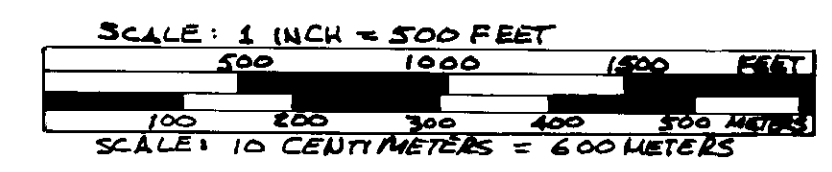
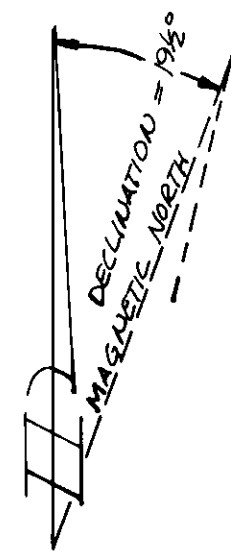
RESEARCH CONSISTED OF INFORMATION FROM THE ORIGINAL SURVEY RECORDS, AND CORNER CARDS AND CERTIFICATES ON FILE WITH THE LAGRANDE RANGER DISTRICT OF THE USFS. COPIES OF CORNER CERTIFICATES ON FILE WITH THE UNION COUNTY SURVEYOR'S OFFICE WERE SUPPLIED BY THE FOREST SERVICE. B. A. SUTTON RLS 1848, WITH THE ASSISTANCE OF D.E. SCOTT, RLS 1844 AND G.J. ARRAUD PERFORMED THE FIELD SURVEY WITH A TOPCON GTS-1. TRAVERSE CLOSURES MET OR EXCEEDED USFS CONTRACT REQUIREMENTS. CORNERS SHOWN ON THE ADJOINING MAP AS SET FROM ORIGINAL EVIDENCE WERE USED AS CONTROL IN ESTABLISHING THE SURVEY LINES SHOWN.

THE ORIGINAL SURVEY NOTES INDICATE THE TOWNSHIP LINE WAS FIRST RUN FOR T.3S., AND LATER CORNERS FOR T.4S., WERE SET ON A LATER RETRACEMENT 2 DAYS LATER. ALTHOUGH THE CORNERS FOR T.4S., ARE NOT TRUE CLOSING CORNERS BUT RATHER JUNIOR CORNERS TO THE CORNERS FOR T.3S., ACCORDING TO CASE 3 UNDER SECTION 5-35 OF THE BLM MANUAL THE JUNIOR CORNERS ARE TO BE TREATED AS CLOSING CORNERS. THEREFORE THE SECTION CORNER COMMON TO SECTIONS 5 & 6, T.4S., IS AMMENDED BY INTERSECTION OF THE SENIOR LINE FOR T.3S. WITH THE LINE ESTABLISH BY THE JUNIOR SECTION CORNER AND THE 1/4 CORNER TO THE SOUTH. THE SOUTH 1/4 OF SECTION 32 WAS NOT FOUND SO WAS ESTABLISHED BY SINGLE PROPORTIONING.

BASIS OF BEARINGS FOR THIS SURVEY IS BY SOLAR OBSERVATION. THE ORIGINAL GLO SURVEY WAS PERFORMED BY RUFUS S. MOORE UNDER CONTRACT NO 451, DATED JUNE 12, 1882.

LEGEND:

- CH ~ DISTANCE IN CHAINS
- M ~ DISTANCE IN METERS
- FT ~ DISTANCE IN FEET
- N ~ NORTH
- S ~ SOUTH
- E ~ EAST
- W ~ WEST
- GLO ~ GENERAL LAND OFFICE
- T. ~ TOWNSHIP
- R. ~ RANGE
- ACAP ~ ALUMINUM CAPPED ALUMINUM PIPE
- BLM ~ BUREAU OF LAND MANAGEMENT
- ~ 2 1/2" X 30" ACAP SET
- ~ MONUMENT FOUND



- NOTES:
1. FIELD NOTEBOOKS ARE ON FILE WITH SUTTON SURVEYING ELGIN, OREGON
 2. CORNER CARDS ARE ON FILE WITH THE USFS LAGRANDE RANGER DISTRICT
 3. CORNER CERTIFICATES ARE ON FILE WITH THE UNION COUNTY SURVEYOR LAGRANDE, OR.
 4. DETAILS FOR ALL CORNERS ARE ON THE CORNER CARDS AND CERTIFICATES.

UNION COUNTY SURVEYOR

Date Received 7-11-84

Date Filed 7-16-84

By G. LANGRISH, DEPUTY

File No. 29-84

I, B.A. SUTTON REGISTERED LAND SURVEYOR NO. 1848, DO HEREBY CERTIFY THAT THIS PLAT IS A TRUE REPRESENTATION OF THE SURVEY I MADE DURING THE MONTHS OF MAY & JUNE, 1984.

REGISTERED PROFESSIONAL LAND SURVEYOR

B.A. Sutton 6-3084

OREGON
JULY 13, 1976
B. A. SUTTON
L.S.R.