

PLAT OF SURVEY FOR U.S. FOREST SERVICE WALLOWA-WHITMAN NATIONAL FOREST

SURVEY PERFORMED UNDER CONTRACT NO. 53-04M3-3-2932

SURVEY BY: SUTTON SURVEYING
P.O. BOX 237 437-0810
ELGIN, OR 97827

NARRATIVE

LOCATION:

SECTION 36 IS LOCATED APPROXIMATELY 6 1/2 MILES NORTH OF STATE HIGHWAY 244 MILE POST 20 AND APPROXIMATELY 3/8 MILE WEST OF U.S.F.S. ROAD 21.

PROCEDURES:

RESEARCH CONSISTED OF INFORMATION FROM ORIGINAL SURVEY RECORDS AND CORNER CARDS AND CERTIFICATES ON FILE WITH THE LAGRANDE OFFICE OF THE FOREST. COPIES OF CORNER CERTIFICATES ON FILE WITH UNION CO. SURVEYOR WERE SUPPLIED BY THE FOREST SERVICE. B.A. SUTTON, RLS 1848, WITH THE ASSISTANCE OF D.E. SCOTT, RLS 1844, G.J. ARRAND PERFORMED THE FIELD WORK WITH A TOPCON GTS 1. TRAVERSE CLOSURES MET OR EXCEEDED U.S.F.S. CONTRACT REQUIREMENTS. CORNERS INDICATED AS FOUND OR SET FROM ORIGINAL EVIDENCE ON THE ADJOINING MAP WERE USED AS CONTROL FOR ESTABLISHING THE EXTERIOR BOUNDARY OF SECTION 36. THE S.E. SEC. CORNER AND THE SOUTH QUARTER CORNER WERE ESTABLISHED BY SINGLE PROPORTIONING. SIX FOOT LONG #133 STEEL FENCE POSTS WERE USED TO POST THE U.S.F.S. BOUNDARY LINES AT 200-400 FEET ± INTERVALS. CORNER CARDS ARE ON FILE WITH THE WALLOWA-WHITMAN NATIONAL FOREST HEADQUARTERS AND THE LA GRANDE RANGER DISTRICT OFFICE FOR THOSE CORNERS INDICATED AS SET ON THE ADJOINING MAP. AN UNUSUAL PROBLEM OCCURED CONCERNING THE WEST 1/4 CORNER AND THE NORTHWEST CORNER OF SECTION 36. THE ORIGINAL G.L.O. NOTES INDICATE HE MEASURED NORTH BETWEEN SECTIONS 35 AND 36 40 CHAINS AND SET THE 1/4 CORNER. AT 63 CHAINS HE CROSSED MEADOW CREEK AND FOLLOWED CREEK BOTTOM LAND 80 CHAINS TO THE NORTHWEST CORNER OF SECTION 36, WHEN IN FACT THE LINE NORTH BETWEEN 35 AND 36 IS APPROXIMATELY 2 MILES SOUTH OF MEADOW CREEK AND CLIMBS TO A RIDGE TOP JUST NORTH OF THE 1/4 CORNER AND FOLLOWS THE RIDGE TOP TO THE SECTION CORNER. EVIDENCE FOUND AT THE 1/4 CORNER AND THE SECTION CORNER AS WELL AS TERRAIN CALLS DOES NOT MATCH THE ORIGINAL NOTE'S. THE B.L.M. CADASTRAL SURVEY SECTION IN PORTLAND WAS CONSULTED AND IT IS THEIR OPINION IF THE EVIDENCE CAN BE PROVEN TO BE OLD ENOUGH TO HAVE BEEN THE ORIGINAL AND ANY MONUMENT, STONE WITH NOTCHES OR POST, IS FOUND IT SHOULD BE USED BEFORE DOUBLE PROPORTIONING IS USED. IF NO MONUMENT IS FOUND A MEAN LOCATION OF THE DIRECTION THE BLAZES FACE SHOULD BE USED. WE FOUND A MOUND OF STONES WITH A STONE 18X9X6 WITH A FAINT 1/4 ON IT. IT FELL VERY CLOSE TO 40 CHAINS NORTH OF THE SOUTHWEST CORNER OF SECTION 36. THE LOCATION OF THE STONE AND MOUND WAS USED FOR ESTABLISHING THE CORNER. OF THE 4 TREES FOUND NEAR THE NORTHWEST CORNER OF SECTION 36, THE NORTHEAST ONE WAS EASIEST TO GET AN ACCURATE GROWTH RING COUNT OF 101 YEARS FROM THE BLAZE. NOW THERE IS PROPER SCRIBING VISIBLE ON ALL 4 TREES. THE ORIGINAL SURVEY WAS DONE 102 YEARS AGO. SINCE THE LOCATION AND SPECIES OF TREES FOUND DO NOT MATCH THE RECORD (G.L.O. NOTES) AND THE TREES FOUND ARE OLD ENOUGH THE FACING OF THE BLAZES WAS USED TO ESTABLISH THE CORNER LOCATION. THE 1/4 CORNERS TO THE NORTH AND WEST WERE

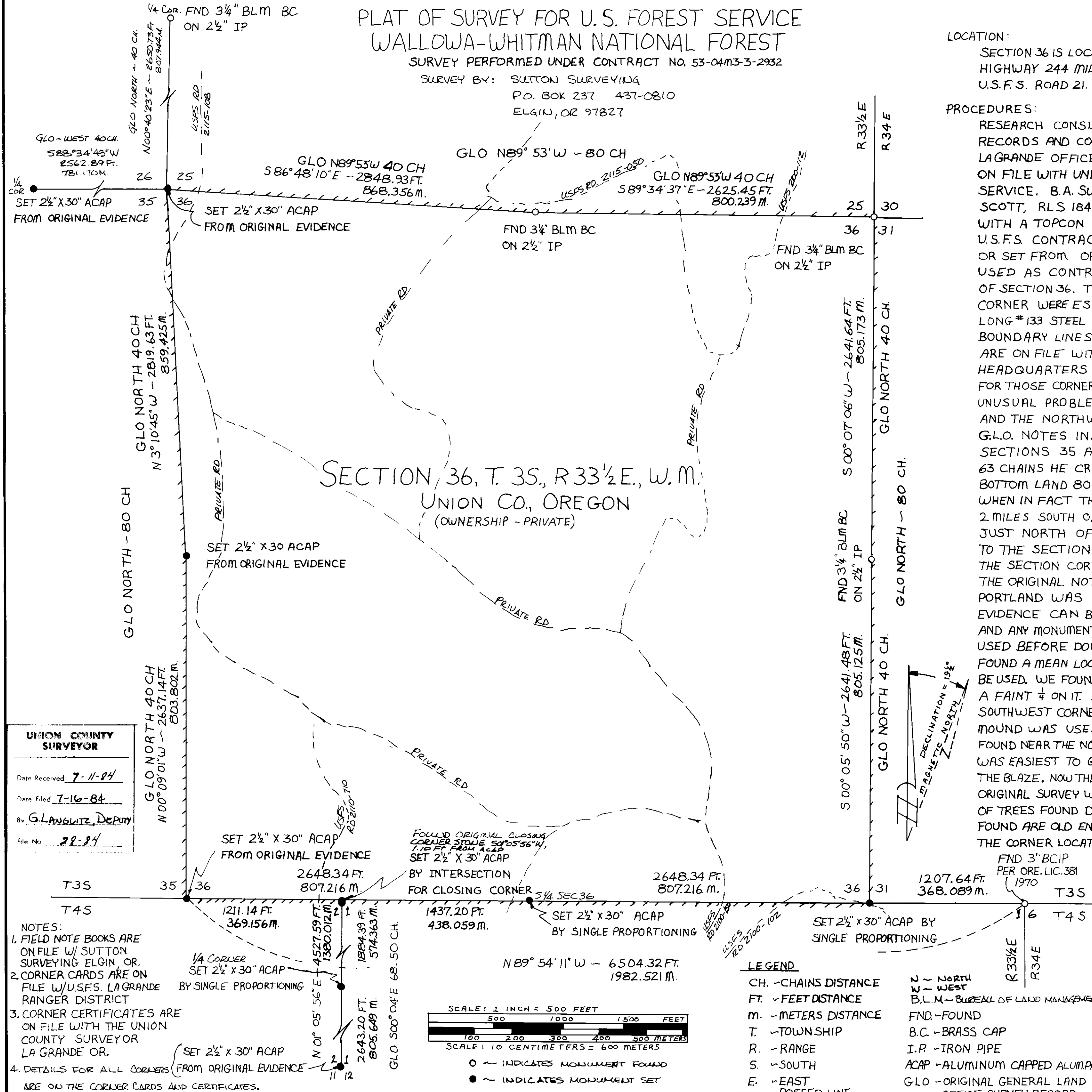
LOCATED BY SURVEY AND SEEM TO VERIFY THIS ESTABLISHED LOCATION. BASIS OF BEARINGS FOR THIS SURVEY IS BY SOLAR OBSERVATION. THE ORIGINAL SURVEY WAS PERFORMED BY RUFUS S. MOORE UNDER CONTRACT NO. 451 DATED JUNE 12, 1882.

SECTION 36 IS PRIVATELY OWNED LAND SURROUNDED BY U.S. FOREST SERVICE LAND.

I B.A. SUTTON, REGISTERED LAND SURVEYOR NO. 1848, HEREBY CERTIFY THAT THIS PLAT IS A TRUE REPRESENTATION OF THE SURVEY I MADE OF SECTION 36 DURING THE MONTHS OF MAY AND JUNE, 1984.

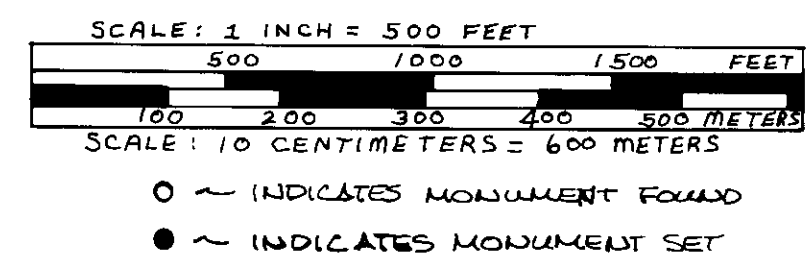
REGISTERED PROFESSIONAL LAND SURVEYOR
B.A. Sutton 6-29-84
OREGON
JULY 13, 1979
B.A. SUTTON
1948

SECTION 36, T. 35., R. 33 1/2 E., W. M.
UNION CO., OREGON
(OWNERSHIP - PRIVATE)



UNION COUNTY SURVEYOR
Date Received 7-11-84
Date Filed 7-16-84
By G. LANGRITZ, Deputy
File No. 28-84

NOTES:
1. FIELD NOTE BOOKS ARE ON FILE W/ SUTTON SURVEYING ELGIN, OR.
2. CORNER CARDS ARE ON FILE W/ U.S.F.S. LAGRANDE RANGER DISTRICT
3. CORNER CERTIFICATES ARE ON FILE WITH THE UNION COUNTY SURVEYOR LAGRANDE OR.
4. DETAILS FOR ALL CORNERS ARE ON THE CORNER CARDS AND CERTIFICATES.



LEGEND
CH. - CHAINS DISTANCE
FT. - FEET DISTANCE
M. - METERS DISTANCE
T. - TOWNSHIP
R. - RANGE
S. - SOUTH
E. - EAST
----- POSTED LINE
N - NORTH
E - WEST
B.L.M. - BUREAU OF LAND MANAGEMENT
FND. - FOUND
B.C. - BRASS CAP
I.P. - IRON PIPE
ACAP - ALUMINUM CAPPED ALUM. PIPE
G.L.O. - ORIGINAL GENERAL LAND OFFICE SURVEY RECORD