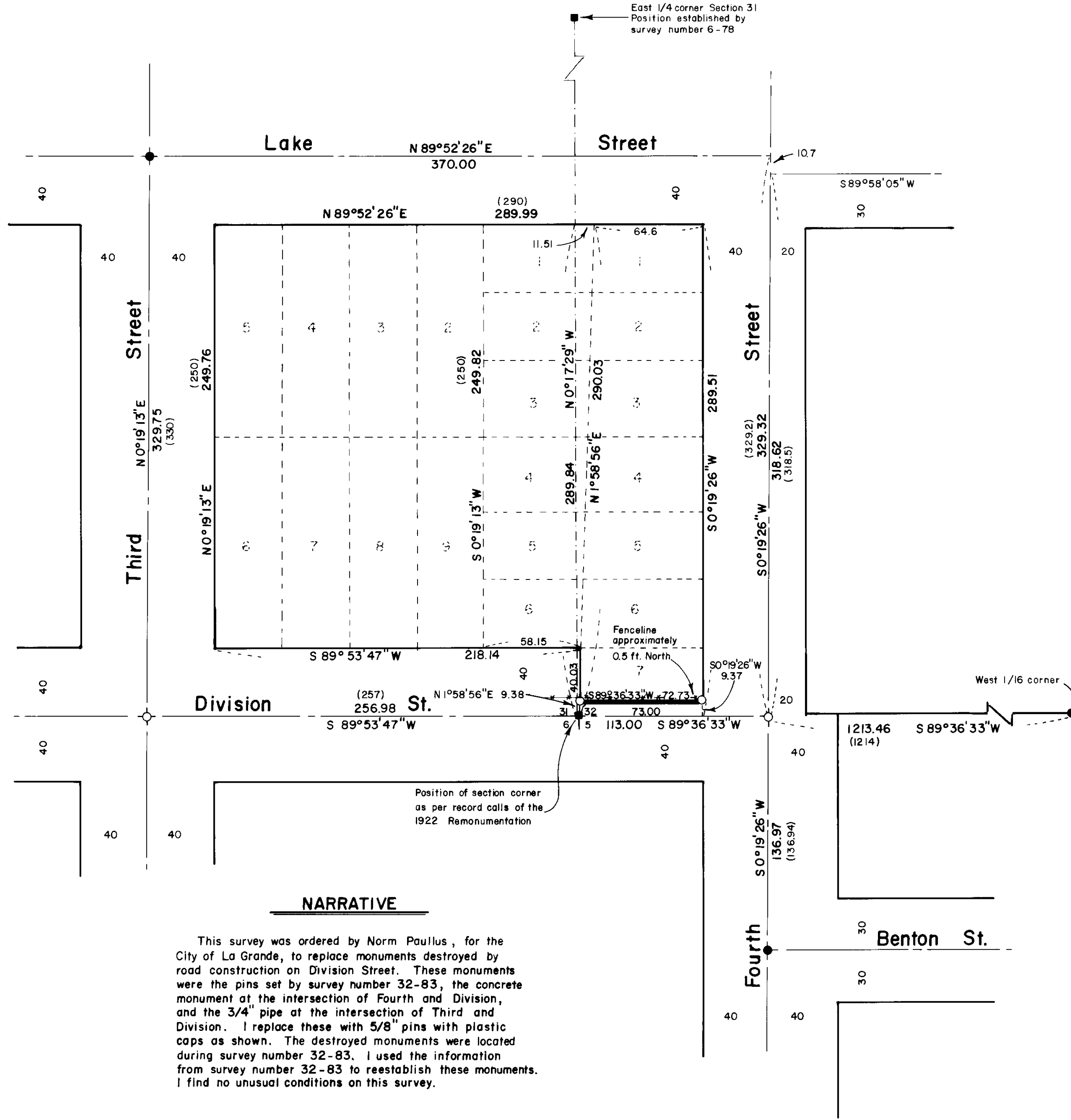


East 1/4 corner Section 31  
Position established by  
survey number 6-78



### BASIS OF BEARING

The forward bearing as published by the U.S.C. and G.S. from  $\Delta$  College to  $\Delta$  Valley

### REFERENCE MATERIAL

- Plat of Rynearson's Addition
- Plat of Sunnyside Addition
- Plat of Sunnyside Subdivision of lots 1 & 10, blocks 2 & 3, Rynearson's Addition
- 1922 Remonumentation of La Grande
- Survey Number 48-72
- Survey Number 21-74
- Survey Number 71-75
- Survey Number 6-78
- Survey Number 17-78
- Survey Number 32-83

### LEGEND

- Found 3/4" pipe set by 1922 Remonumentation
- ( ) Record distance
- Position established as described
- Reset 5/8" x 30" iron pin with plastic cap marked BGA SURVEY MARKER to replace monument destroyed by road construction
- West line of Section 32
- - - Centerline
- ← Existing fenceline

### NARRATIVE

This survey was ordered by Norm Paullus, for the City of La Grande, to replace monuments destroyed by road construction on Division Street. These monuments were the pins set by survey number 32-83, the concrete monument at the intersection of Fourth and Division, and the 3/4" pipe at the intersection of Third and Division. I replace these with 5/8" pins with plastic caps as shown. The destroyed monuments were located during survey number 32-83. I used the information from survey number 32-83 to reestablish these monuments. I find no unusual conditions on this survey.

**UNION COUNTY SURVEYOR**  
Date Received 2/27/84  
Date Filed 2-28-84  
By G. LANGLITZ, DEPUTY  
File No. 3-84

REGISTERED PROFESSIONAL LAND SURVEYOR  
*Gregory T. Blackman*  
OREGON  
JULY 13, 1973  
GREGORY T. BLACKMAN  
991

<b>BAGETT - GRIFFITH &amp; ASSOCIATES</b> La Grande, Oregon Map of Survey A portion of Lot 7 Block 3 Sunnyside Addition La Grande UNION COUNTY, OREGON		
SURVEYED FOR	City of La Grande	
SURVEYED BY	G. T. B.	2/84
Scale: 1" = 50'	Drawn by: R. G. R.	2/84