

SURVEYOR'S STATEMENT:

I, WILLIAM L. HANLEY, A REGISTERED SURVEYOR IN THE STATE OF OREGON, HEREBY CERTIFY THAT THIS PLAT AND THE NOTES CONTAINED HEREON OR ATTACHED, ARE A CORRECT REPRESENTATION OF A SURVEY PERFORMED BY ME, OR UNDER MY DIRECT SUPERVISION, FROM JULY THRU OCTOBER, 1983, AT THE REQUEST OF THE U.S.D.A., FOREST SERVICE, IN FULL ACCORDANCE WITH THE STATUTES OF THE STATE OF OREGON AND WITH THE ARTICLES OF MY CONTRACT.

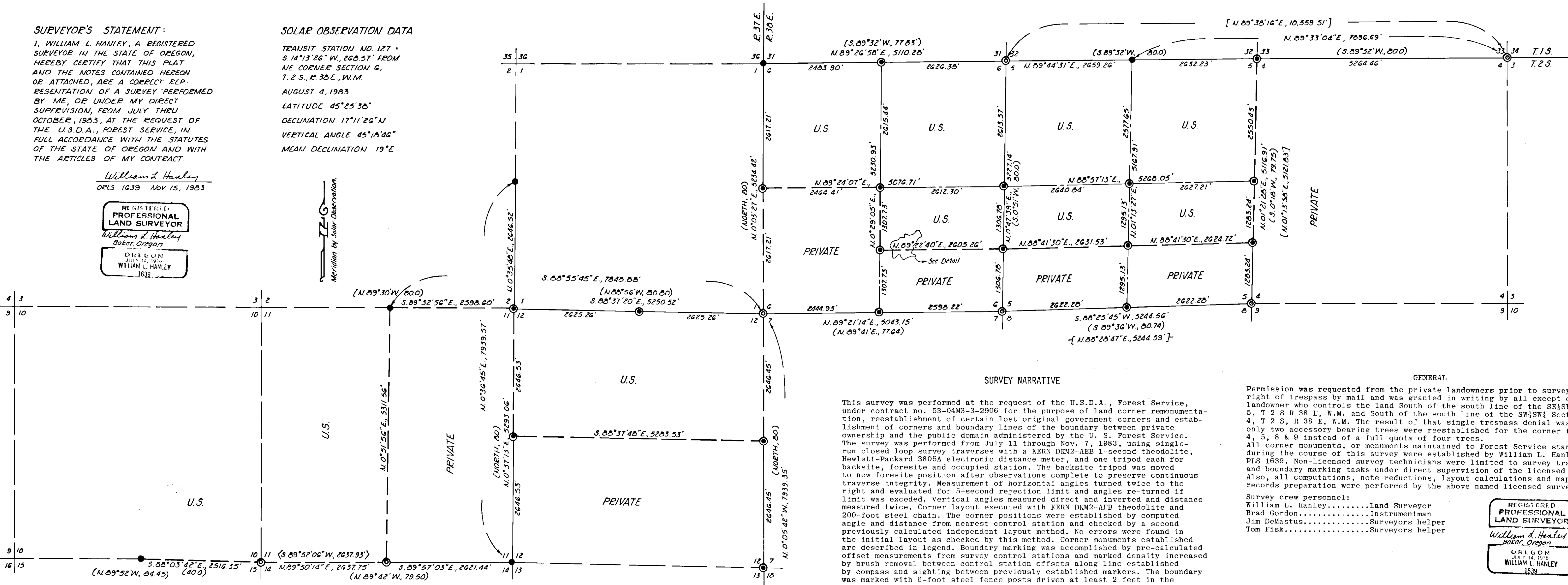
William L. Hanley
ORLS 1639 Nov. 15, 1983

REGISTERED PROFESSIONAL LAND SURVEYOR
William L. Hanley
Baker, Oregon
OREGON
JULY 14, 1980
WILLIAM L. HANLEY
1639

SOLAR OBSERVATION DATA

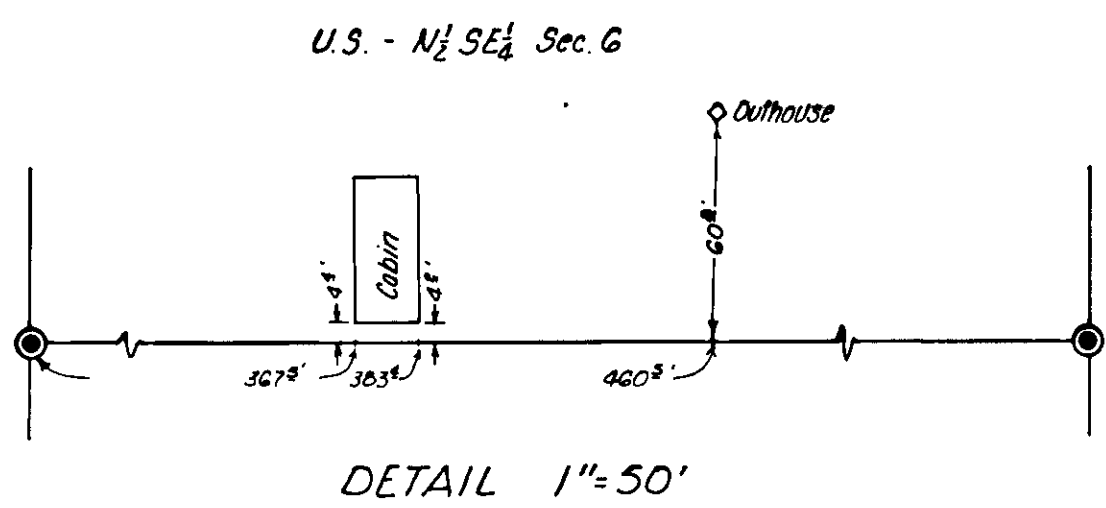
TRANSIT STATION NO. 127 -
S. 14°13'26" W., 268.57' FROM
NE CORNER SECTION G,
T. 2 S., R. 38 E., W.M.
AUGUST 4, 1983
LATITUDE 45°25'36"
DECLINATION 17°11'26" N
VERTICAL ANGLE 45°16'46"
MEAN DECLINATION 19°E

Meridian by Solar Observation.



LEGEND

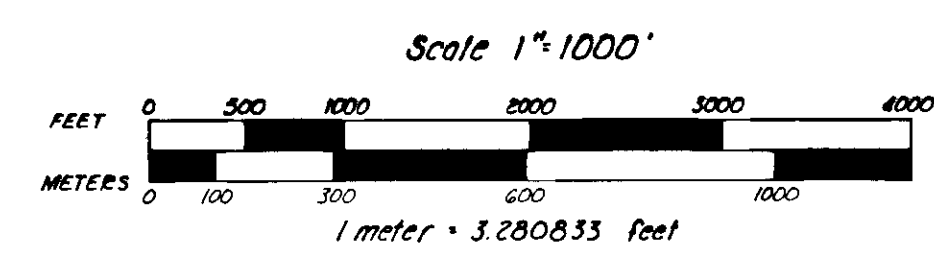
- Found original corner, set 2 1/2" aluminum cap on 2" aluminum pipe or 2 1/2" brass cap on 2" iron pipe.
- ⊙ Set 2 1/2" aluminum cap on 2" aluminum pipe or 2 1/2" brass cap on 2" iron pipe by proportionate measurement.
- ⊙ Found corner remonumented by others.
- () Record of original G.L.O. survey.
- [] Record of survey no. 73-78.
- < > Record of survey no. 45-77.
- |- Record of survey no. 63-79.
- Forest boundary posted this survey.



U.S.D.A., FOREST SERVICE, ADMINISTERED LANDS

Table listing sections and their bearings/distances:

T. 2 S., R. 37 E., W.M.	T. 2 S., R. 38 E., W.M.
Section 11 W 1/2	Section G N 1/2 SE 4
Section 12 N 1/2	Section 5 N 1/2 SW 1/4 N 1/2 SE 4



SURVEY NARRATIVE

This survey was performed at the request of the U.S.D.A., Forest Service, under contract no. 53-04M3-3-2906 for the purpose of land corner remonumentation, reestablishment of certain lost original government corners and establishment of corners and boundary lines of the boundary between private ownership and the public domain administered by the U. S. Forest Service. The survey was performed from July 11 through Nov. 7, 1983, using single-run closed loop survey traverses with a KERN DKM2-ABB 1-second theodolite, Hewlett-Packard 3805A electronic distance meter, and one tripod each for backsite, foresite and occupied station. The backsite tripod was moved to new foresite position after observations complete to preserve continuous traverse integrity. Measurement of horizontal angles turned twice to the right and evaluated for 5-second rejection limit and angles re-turned if limit was exceeded. Vertical angles measured direct and inverted and distance measured twice. Corner layout executed with KERN DKM2-ABB theodolite and 200-foot steel chain. The corner positions were established by computed angle and distance from nearest control station and checked by a second previously calculated independent layout method. No errors were found in the initial layout as checked by this method. Corner monuments established are described in legend. Boundary marking was accomplished by pre-calculated offset measurements from survey control stations and marked density increased by brush removal between control station offsets along line established by compass and sighting between previously established markers. The boundary was marked with U.S.F.S. sign 54-2, property boundary signs, attached with two loops of #12 gauge galvanized fence wire wrapped twice around and twisted up snug a minimum of three turns.

DISCUSSION

The history of prior surveys in the area of this work is outlined elsewhere on this plat under REFERENCE SURVEYS. Extensive obliteration of original government corners and accessories has occurred due to fires, logging as early as the 1880's, more recently by firewood cutters, and minimal perpetuation of corners. In all cases of lost original corners where fence corners were present, the applicable proportionate measurement method of corner reestablishment was employed as opposed to accepting the fence corner as the true corner position. It was observed that where original evidence was recovered and a fence corner was in the vicinity, that in no instance were the two positions in error. Prime examples of this are the corner to Sections 10, 11, 14 & 15 and the quarter-section corner common to Sections 11 & 14, T. 2 S., R. 37 E., W.M. In the first instance, a tree fence corner bears S 08° E., 40 feet distance from the original corner position as established from a burned stump and two root remains of original accessories. In the second instance, a tree fence corner bears N 11° W., 35 feet distance from the original corner position as established from a standing bearing tree and a laid over sawed bearing tree stump. One interior section corner was declared lost and reestablished by double proportionate measurement. Six interior quarter-section corners were declared lost and reestablished by single proportionate measurement. Five corners on township or range lines were declared lost and the corner positions reestablished by single proportionate measurement. In one case, a corner established by others during the course of a prior survey was found to be in error. Previously, the Northeast corner of Section 5, T. 2 S., R. 38 E., W.M., was reestablished by single proportionate measurement between the found Northwest corner of the said Section 5 and the Northeast corner of Section 4, said township and range. This corner was monumented with a 3-inch X chisled on the east edge of a 6' x 4' x 4' rock and described on Union County survey no. 73-78. During the course of this survey, both original accessory bearing trees were recovered for the North quarter-section corner of Section 5, T. 2 S., R. 38 E., W.M., and the corner subsequently monumented as shown on this plat. The Northeast corner position of said Section 5 was reestablished by single proportionate measurement between the said North quarter-section corner of Section 5 and the previously mentioned Northeast corner of Section 4. The reestablished Northeast corner of Section 5 bears S 70°43'05" E., 14.57 feet distance from the previously established corner position. The marks on the 6' x 4' x 4' rock were removed as a part of our remonumentation efforts. Corner search for unrecovered land corners prior to this survey was accomplished with a staff compass and string box calibrated with a 200-foot steel chain. Search areas were identified by running lines from the nearest found original corners and reconciling existing topographic calls with those of record from the approved original G.L.O. notes. In all cases where the original corner was not found upon initial search, successive lines were run to the next found original corner. The search area was then refined to conform to the closures established between found corners. During the course of control survey traverses, control stations were established near these search areas and after the survey traverse was computed, the search area was further refined and search efforts employed again prior to remonumentation by survey. Each corner declared lost was searched a minimum of two separate occasions by different 2-man survey crews and approximately 4 to 6 man-hours spent in total search time.

GENERAL

Permission was requested from the private landowners prior to survey for right of trespass by mail and was granted in writing by all except one landowner who controls the land South of the south line of the SE 1/4 Section 5, T. 2 S. R. 38 E., W.M. and South of the south line of the SW 1/4 Section 4, T. 2 S., R. 38 E., W.M. The result of that single trespass denial was that only two accessory bearing trees were reestablished for the corner to Sections 4, 5, 8 & 9 instead of a full quota of four trees. All corner monuments, or monuments maintained to Forest Service standards, during the course of this survey were established by William L. Hanley, PLS 1639. Non-licensed survey technicians were limited to survey traverse and boundary marking tasks under direct supervision of the licensed surveyor. Also, all computations, note reductions, layout calculations and map and records preparation were performed by the above named licensed surveyor.

Survey crew personnel:
William L. Hanley.....Land Surveyor
Brad Gordon.....Instrumentman
Jim DeMastus.....Surveyors helper
Tom Fisk.....Surveyors helper

REGISTERED PROFESSIONAL LAND SURVEYOR
William L. Hanley
Baker, Oregon
OREGON
JULY 14, 1980
WILLIAM L. HANLEY
1639

REFERENCE SURVEYS:

- () G.L.O. original surveys;
North and West boundaries T. 2 S., R. 38 E., W.M., by T. Davenport under GLO contract no. 102 dated July 20, 1863.
Subdivision T. 2 S., R. 38 E., W.M., (partial) by Herman D. Graden under GLO contract no. 452 dated June 16, 1882.
North boundary T. 2 S., R. 37 E., W.M., by Jacob C. Cooper under GLO contract no. 397 dated July 1, 1881.
Subdivision T. 2 S., R. 37 E., W.M., by Henry Meldrum under GLO contract no. 450 dated June 11, 1882.
- [] Survey no. 73-78 by Baggett-Griffith & Assoc., LaGrande, Oregon.
- < > Survey no. 45-77 by Anderson-Perry & Assoc., LaGrande, Oregon.
- [] Survey no. 63-79 by Baggett-Griffith & Assoc., LaGrande, Oregon.

NOTE: For record of corner monumentation see Certified Record of Land Corner Monumentation sheets filed separately.

RECORD OF SURVEY PLAT
BIG V CADASTRAL SURVEY

U.S.D.A., FOREST SERVICE, CONTRACT NO. 53-04M3-3-2906

Surveyed July 11 to Nov. 7, 1983

Scale 1"=1000'

SURVEYED BY HANLEY ENGINEERING