

REFERENCE MATERIAL

Oregon State Highway drawing 6B-35-9
Survey Number 37-71
Survey Number 31-82

Deed record microfilm numbers

76132 82167
80374 82169

BASIS OF BEARING

The forward bearing as published by the U.S.C. and G.S. from Δ College to Δ Valley

LEGEND

- Found monument as described
- ⊙ Set 2 1/2" x 30" aluminum monument at proportionate distance
- ⊙ Set 2 1/2" x 30" aluminum monument at position determined by survey no. 37-71
- Set 5/8" x 30" iron pin with plastic cap marked BGA SURVEY MARKER
- Centerline

NARRATIVE

I made this survey at the request of Davidson Brothers to locate the parcels hereon shown. In 1971 I made survey number 37-71 for Husky Oil Company. At that time the freeway was under construction and several highway stations were marked. I tied to these points and located station 75+00 and several other highway stations Southeastly. At that time I determined the location of the Southeast corner of Section 16 on the basis of State Highway Department ties, however I did not set a monument. I now set that monument as shown on the basis of evidence developed in 1971. I establish the centerline of Highway 30 based on the centerline nail and shiner found in 1971 at station 75+00 and the BPA monument on the Southwesterly right of way line at approximate centerline station 28+00 as shown on Oregon State Highway Department map number 6B-35-9.

Found brass cap in concrete cylinder set by Bonneville Power Administration

Found brass cap reference monument 29.40 feet North of true Section corner position

REGISTERED PROFESSIONAL LAND SURVEYOR

Duane J. Griffith

OREGON
JULY 10 1964
DUANE J. GRIFFITH
644

UNION COUNTY SURVEYOR

Date Received 9-6-83

Date Filed 9-12-83

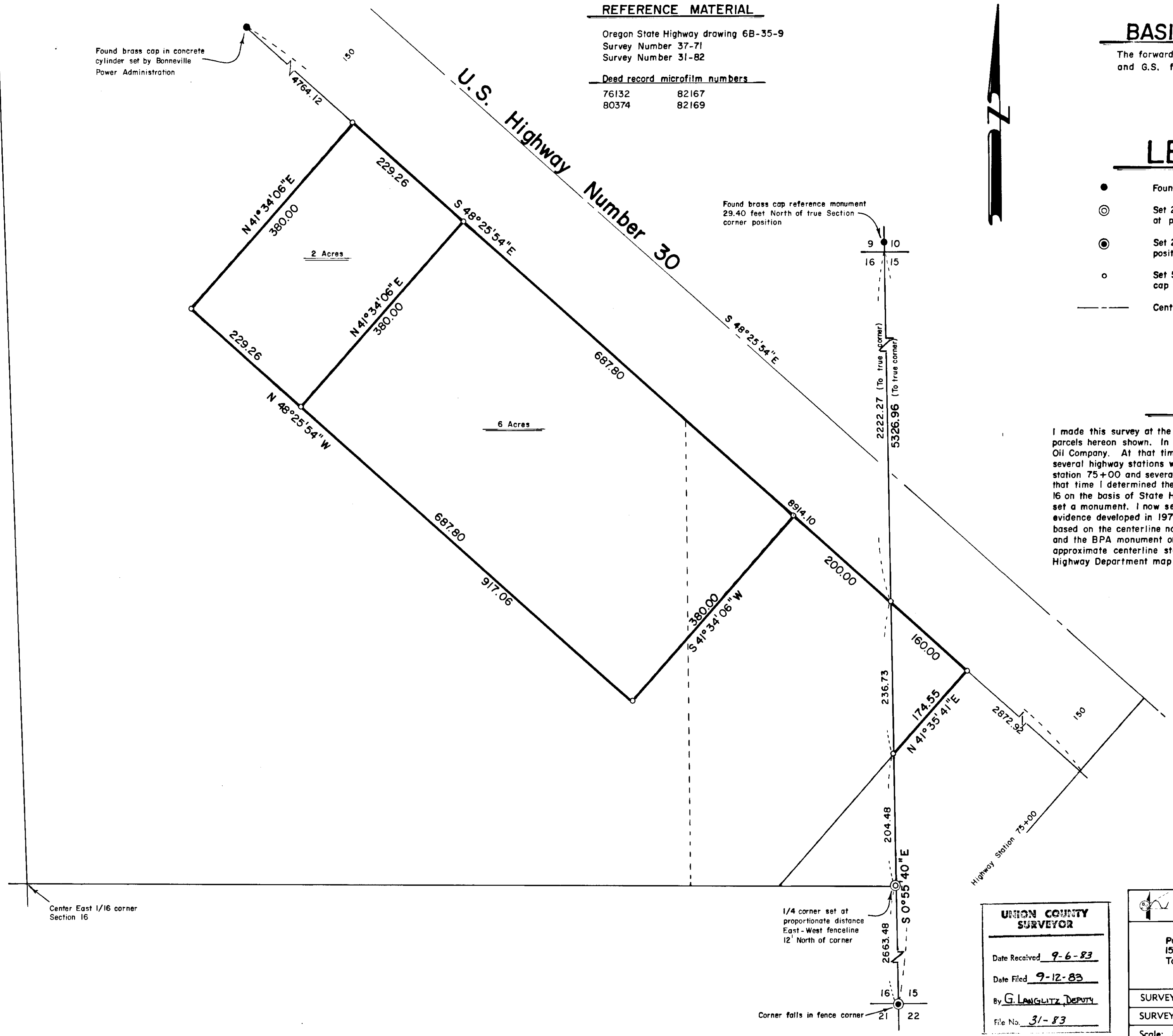
By G. LANGLITZ DEPUTY

File No. 31-83

BAGETT - GRIFFITH & ASSOCIATES
La Grande, Oregon
Map of Survey

Parcels in the Northwest quarter of Section 15, and in the Northeast quarter of Section 16, Township 3 South, Range 38 East, W. M. La Grande
UNION COUNTY, OREGON

SURVEYED FOR	Davidson Brothers	
SURVEYED BY	d.i.g.	9/83
Scale: 1" = 100'	Drawn by: r.g.r.	9/83



Center East 1/16 corner Section 16

1/4 corner set at proportionate distance East-West fence line 12' North of corner

Corner falls in fence corner