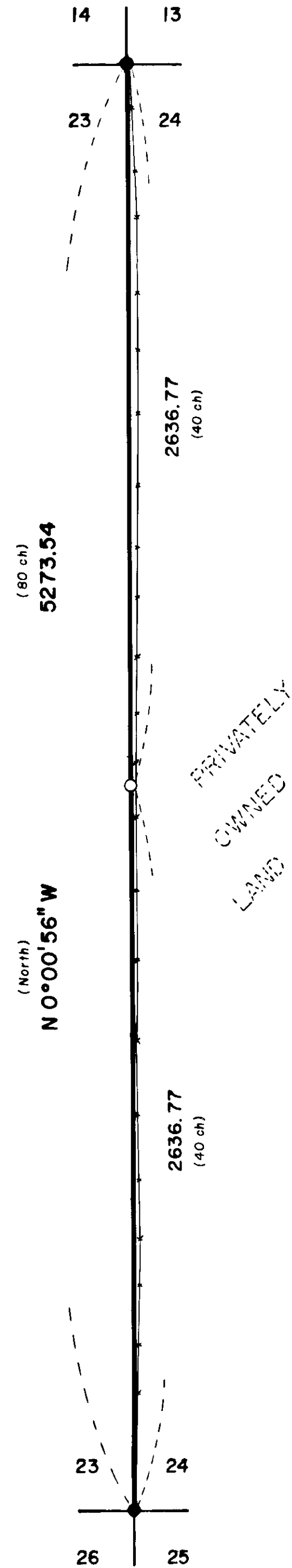


WALLOWA -
WHITTMAN
NATIONAL
FOREST



Basis of Bearing

Magnetic observation taken at the Southeast corner of Section 23, Township 4 South, Range 37 East of the Willamette Meridian (20° East magnetic declination)

Reference Material

Union County remonumentation records
General Land Office contract number 452

LEGEND

- Found brass cap monument (see County remonumentation records)
- Set 2 1/2" x 30" iron pipe with brass cap at proporfionate distance
- Existing fenceline
- () GLO Record bearing and distance

NOTE

For monumentation information see remonumentation sheets filed separately

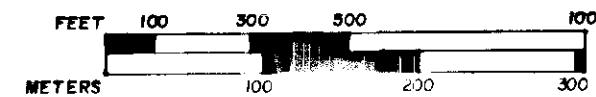
Surveyor's Statement

I, Duane I. Griffith, registered land surveyor in the State of Oregon, hereby certify that this plat and the notes hereon, or attached, are a true and correct representation of the survey I made during June, 1983, at the request of the U.S. Forest Service, in accordance with the statutes of the State of Oregon and with the articles of my contract. I began my survey by running a closed traverse between the monumented Section corners. I then searched for the 1/4 corner. I was unable to find any evidence. I therefore reestablish this corner by proportionate method. I set steel fence posts with 54-2 signs on the true Section line. I find an existing fence East of the posted line approximately 15-20 feet in the North half mile and approximately 5-10 feet in the South half mile.

Duane I. Griffith, OPLS 644
Bagett, Griffith and Associates
P.O. Box 576
La Grande, OR 97850

UNION COUNTY SURVEYOR	
Date Received	6/6/83
Date Filed	6-17-83
By	G. LANGLITZ, DEPUTY
File No.	19-83

1 Meter = 3.280833 Feet



Scale: 1" = 400'

REGISTERED PROFESSIONAL LAND SURVEYOR

OREGON
JULY 10, 1984
DUANE I. GRIFFITH
644

BAGETT - GRIFFITH & ASSOCIATES La Grande, Oregon		
Map of Survey The East line of Section 23 Township 4 South Range 37 East of the Willamette Meridian UNION COUNTY, OREGON		
SURVEYED FOR	U.S. Forest Service	
SURVEYED BY	d.i.g.	6/83
Scale: 1" = 400'	Drawn by: RGR	6/83