

- ① SEC. COR. ~~1117~~, T.3N., R.39E., W.M. FD. A 2" DIA. BRASS CAP IN A 2" IRON PIPE 6" ABOVE GROUND AND STAMPED PER SKETCH. COR IS ON EAST EDGE OF CAT ROAD. FENCE, 20' WEST, 36" D.B.H. PONDEROSA PINE, N.30°W, 80.8', WITH SCRIBING ON PARTIALLY OPEN FACE, ORIGINAL B.T. 11" D.B.H. DOUGLAS FIR, N.58°E, 52.6', WITH SCRIBING ON PARTIALLY HEALED FACE. 2" D.B.H. PONDEROSA PINE, S.39°E, 93.5', WITH SCRIBES R39E VISIBLE ON OPEN FACE, 10" D.B.H. PONDEROSA PINE, S.62°W, 33.4', SCRIBING VISIBLE.
- ② 1/4 COR. S.2142B, T.3N., R.39E., W.M. FD. STONE, 18"x15"x8" SET FIRMLY IN THE GROUND WITH 1/4 SCRIBE ON NORTH FACE, RING OF PINE BARK AND ROTTEN WOOD, ONE PIECE WITH 1/4 SCRIBED ON IT, N.10°W, 16.5'. SET A 2 1/2" DIAM. BRASS CAP ON A 2"x30" IRON PIPE AT THE CORNER POINT AND BURIED CORNERSTONE ALONGSIDE MONUMENT. CAP STAMPED PER SKETCH, NEW B.T.S. 6" D.B.H. WHITE FIR, N.56°W, 9.1', SCRIBED 1/4 S.21 BT., BRASS WASHER RPLS 1910 BETWEEN B.T. 10" D.B.H. DOUGLAS FIR, S.78°E, 35', SCRIBED 1/4 S.21 BT., BRASS WASHER RPLS 1910 BETWEEN B.T. CORNER LIES 200' NORTH OF RIDGE, LOCATION POSTER ON PINE ON RIDGE, 2 STEEL FENCE POSTS WITH POSTERS E&W.
- ③ 1/4 COR. S.27, S.2B, T.3N., R.39E., W.M. FD. 8"x8"x8" STONE WITH 1/4 SCRIBE LAYING ON THE GROUND, 6" D.B.H. DEAD AND DOWN PINE, N.34°E, 13 LINKS (ORIG. B.T.) WITH SCRIBES 445 BT. CLEARLY VISIBLE. BOISE CASCADE LOCATION TAG ON A 1 1/4" D.B.H. DOUGLAS FIR, S.85°W, 13.8'. NOT A B.T. SET A 2 1/2" DIAM. BRASS CAP, STAMPED PER SKETCH, IN A 2"x30" IRON PIPE AT POINT FOR CORNER. NEW B.T.S. 12" D.B.H. PONDEROSA PINE, S.59°E, 23.8', SCRIBED 1/4 S.27 BT. 14" D.B.H. DOUGLAS FIR, S.80°W, 13.5', SCRIBED 1/4 S.27 BT. BOTH B.T.S. HAVE BRASS RPLS 1910 WASHERS BETWEEN B.T. POINT FOR CORNER ON STONE WAS AT RECORD BEARING AND DISTANCE FROM REMAINING B.T.
- ④ C.1/4, S.2B, T.3N., R.39E., W.M. SET A 2 1/2" DIAM. BRASS CAP, STAMPED PER SKETCH, IN A 2"x30" IRON PIPE AT POINT FOR CORNER. BUILT A ROCK MOUND AROUND PIPE, 10" D.B.H. DOUGLAS FIR, N.70°E, 39.0', SCRIBED C.1/4 S.2B BT. 8" D.B.H. PONDEROSA PINE, N.42°W, 14.7', SCRIBED C.1/4 S.2B BT. BOTH B.T.S. HAVE BRASS RPLS 1910 WASHERS BETWEEN B.T. CORNER IS SITUATED ON A GRASS HILLSIDE FACING SOUTH IN AN OPEN TIMBER STAND, AND ABOUT 300' NORTH OF A DRAINAGE RUNNING NW-SE.
- ⑤ 1/4, S.29, S.2B, T.3N., R.39E., W.M. FD. 3" HIGH STONE AT INTERSECTION OF DISTANCES FROM B.T.S. 30" D.B.H. PINE (24"), N.74°W, 71.3', WITH A NEARLY HEALED FACE, SCRIBES "BT" VISIBLE, (10") 12" D.B.H. PONDEROSA PINE, N.59°E, 45.5', WITH HEALED FACE. AT INTERSECTION OF DISTANCES FROM B.T.S. A SCRIBE (PARTIALLY CHIPPED AWAY) WAS FOUND ON THE STONE. AT THIS POINT A ROCK CAP WAS SET, 3" DIAM. BRONZE CAP WITH A 3" STEM SET IN A DRILLED HOLE AND MORTARED IN. CAP STAMPED PER SKETCH. NOTE: NE. B.T., SLOPE DISTANCE, AS THIS FITS TO STONE, NO OTHER STONE FITS HORIZ. DISTANCE.
- ⑥ S. 1/4, S.2B | S.27, T.3N., R.39E., W.M. SET A 2 1/2" DIAM. BRASS CAP IN A 2"x30" IRON PIPE IN MIDDLE OF ROAD, CAP MARKED PER SKETCH. 6" D.B.H. TAMARAC, N.86°W, 13.8', SCRIBED S.1/4 S.2B B.T. 6" D.B.H. DOUGLAS FIR, N.35°E, 13.8', SCRIBED S.1/4 S.27 B.T. BOTH B.T.S. HAVE RPLS 1910 BRASS WASHERS BETWEEN B.T. FENCE LINE 6' WEST AND STEEL FENCE POSTS 4 1/2' W. & N.
- ⑦ C. S. 1/4, S.2B, T.3N., R.39E., W.M. SET A 2 1/2" DIAM. BRASS CAP AT POINT FOR CORNER IN A 2"x30" IRON PIPE AND STAMPED PER SKETCH. 16" D.B.H. DOUGLAS FIR, N.62°E, 7.6', SCRIBED C. S. 1/4 S.2B B.T. BRASS RPLS 1910 WASHERS BETWEEN B.T. ON BOTH B.T.S. CORNER IS ON SE. EDGE OF A SMALL SNAK AND INSIDE TIMBER ON EDGE OF CORNER OF OLD CUTTING ON EAST SLOPE. 14" D.B.H. WHITE FIR, S.8°W, 26.8', SCRIBED C. S. 1/4 S.2B B.T.
- ⑧ SEC. COR. ~~3317~~, T.3N., R.39E., W.M. FOUND A 2 1/2" DIAM. BRASS CAP SET IN A 2" IRON PIPE 12" ABOVE GROUND IN A ROCK MOUND AND STAMPED PER SKETCH. 46" (20") D.B.H. DOUGLAS FIR, N.15°W, 60 LINKS, SCRIBING VISIBLE ON OPEN FACE (ORIGINAL B.T.) 8" D.B.H. DOUGLAS FIR, S.60°W, 46.7', WITH SCRIBING VISIBLE ON PARTIALLY HEALED FACE. 14" D.B.H. DOUGLAS FIR, N.60°E, 32.1', WITH SCRIBING VISIBLE ON PARTIALLY HEALED FACE. 12" D.B.H. DOUGLAS FIR, S.31°E, 69.8', WITH SCRIBING VISIBLE ON PARTIALLY HEALED FACE.
- ⑨ 1/4 COR. S.28, S.33, T.3N., R.39E., W.M. FOUND: NOTHING, ROAD 15' WEST OF CORNER, RUNS NE. BY SW. SET A BRASS CAP IN A 2"x30" IRON PIPE AT POINT FOR CORNER, CAP STAMPED PER SKETCH. NEW B.T.S. 14" D.B.H. PONDEROSA PINE, S.37°E, 9.8', SCRIBED 1/4 S.33 B.T., RPLS 1910 BRASS WASHER BETWEEN B.T., TRIPLE TOP PINE, 8" D.B.H. PONDEROSA PINE, N.48°E, 28.2', SCRIBED 1/4 S.28 B.T., RPLS 1910 BRASS WASHER BETWEEN B.T.
- ⑩ SEC. COR. ~~29120~~ ~~33133~~, T.3N., R.39E., W.M. FOUND A 2 1/2" DIAM. BRASS CAP SET 8" ABOVE GROUND IN A 2" IRON PIPE IN STONE MOUND AND STAMPED PER SKETCH. A 14" D.B.H. PONDEROSA PINE S.45°W, 9 LINKS, WITH SCRIBING T.3N. R.7. VISIBLE ORIGINAL B.T. B.T. STUB, S.60°W, 30 LINKS, WITH SCRIBES N. R.39E S.29 B.T. VISIBLE, ORIGINAL B.T. A 12" D.B.H. DOUGLAS FIR, N.25°W, (19° SLOPE) 18.2', WITH PITCHED OVER SCRIBED FACE. AN 8" D.B.H. PONDEROSA PINE, N.14°E, (56.7' SLOPE) 55.6' @ 15° 45' = 53.5', WITH SCRIBES T.3N. R.39E. S.28 B.T. VISIBLE. A 12" D.B.H. PONDEROSA PINE, S.58°E, (68.1' SLOPE) 68.49 @ 7° 49' = 67.8', WITH SCRIBES T.3N. R.39E. S.33 B.T. A 44" D.B.H. DOUGLAS FIR SNAK, S.84°E, 62 LINKS WITH SCRIBING VISIBLE ON OPEN FACE, A 20" D.B.H. PINE STOB, N.60°E, 53 LINKS, WITH SCRIBES VISIBLE. FENCE RUNNING SOUTH AND EAST.

NOTE: ALL B.T.S. HAVE B.T. TABS, ATTENTION SIGNS AND RED PAINTED BANDS.

BEARINGS BASED ON SOLAR OBSERVATION

G.L.O. DISTANCES AND BEARINGS ARE IN BRACKETS ()

BOUNDARY, POSTED WITH STEEL FENCE POSTS AND U.S.F.S. BOUNDARY SIGNS

O.S.B.F. = OREGON STATE BOARD OF FORESTRY FD = FOUND DIAM. = DIAMETER ALUM = ALUMINUM

G.L.O. = GENERAL LAND OFFICE BLM. = BUREAU OF LAND MANAGEMENT MAG. = MAGNETIC

NARRATION

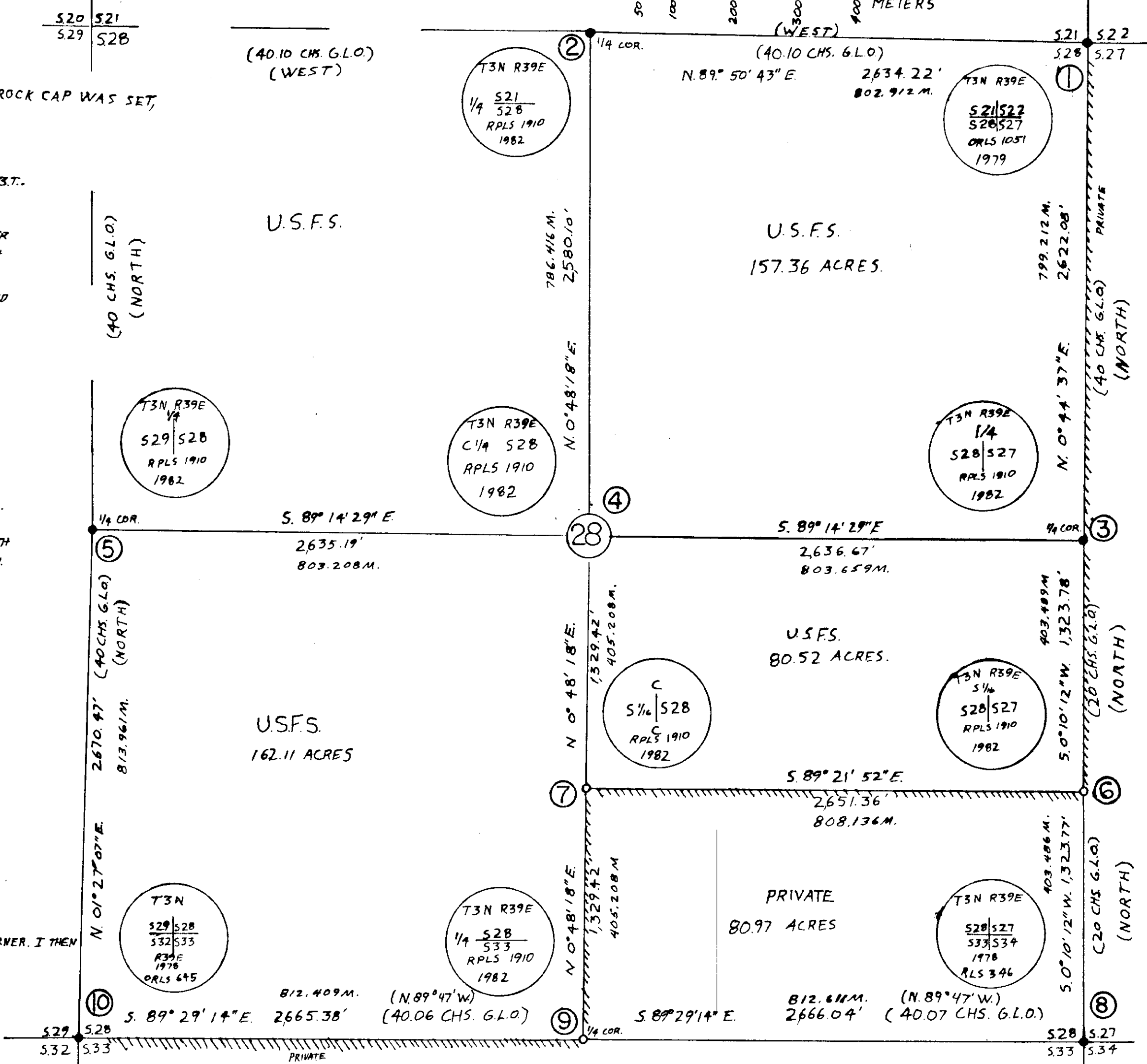
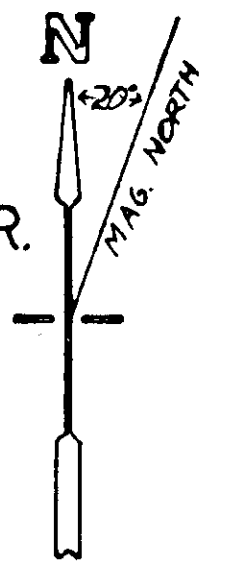
SECTION 28 WAS SURVEYED IN 1884 BY FRANK W. CAMPBELL WHEN HE SUBDIVIDED THE TOWNSHIP. THE SOUTH WEST SECTION CORNER WAS REMONUMENTED BY JAMES H. HABLETON IN 1978, THE SOUTHWEST SECTION CORNER WAS REMONUMENTED BY WAYNE O. HARRIS IN 1978, THE NORTHEAST SECTION CORNER WAS REMONUMENTED BY BARRY B. BARBOUR IN 1978. I RAN A RANDOM TRAVERSE CONNECTING THE KNOWN CORNERS, CLOSED AND BALANCED, A POINT WAS SET FOR THE SOUTH 1/4 CORNER AND A THOROUGH SEARCH MADE OF THE AREA FOR EVIDENCE, NOTHING WAS FOUND. THE CORNER WAS DESTROYED EITHER BY THE LOGGING OR BY THE ROAD WHICH IS WITHIN 15 FEET OF THE PROPORTIONED CORNER. I THEN SET THE CORNER USING PROPORTIONAL MEASURE. THE LAND CALLS ALONG THIS LINE DO NOT FIT. THE EXTERIOR 1/4 CORNERS WERE SET NEXT AND THEN A RANDOM LINE WAS RUN THROUGH THE SECTION, CLOSED AND BALANCED. THE INTERIOR CORNERS WERE THEN SET. THE PURPOSE OF THIS SURVEY WAS TO ESTABLISH THE BOUNDARY BETWEEN THE NATIONAL FOREST AND PRIVATE LAND.

ALL DISTANCES TO BEARING TREES ARE TO CENTER OF TREE 1 FOOT ABOVE ROOT CROWN.

REGISTERED PROFESSIONAL LAND SURVEYOR
 CLAYTON J. MARTIN
 OREGON
 CLAYTON JESSE MARTIN
 1910

C.J. MARTIN SURVEYING
 281 JUNIPER ST.
 SWEET HOME, OR 97356

SURVEY FOR U.S. FOREST SERVICE
 UMATILLA NATIONAL FOREST
 CONTRACT No 53-04R3-2-01243
 SEC. 28, T.3N, R.39E., W.M., UNION COUNTY, OR.
 SCALE: 1"=500' MAY-SEP, 1982
 SURVEYOR: CLAYTON J. MARTIN RPLS 1910
 CHAINMEN: J. MARTIN, B. WILSON, R. GERIG.
 MONUMENT FOUND •
 MONUMENT SET ◦



UNION COUNTY SURVEYOR

Date Received 10-7-82

Date Filed 10-29-82

By G. LANGTZE, DEPUTY

File No. 46-82

I, CLAYTON J. MARTIN, A REGISTERED LAND SURVEYOR IN THE STATE OF OREGON, HEREBY CERTIFY THAT THIS PLAT IS A CORRECT REPRESENTATION OF A SURVEY I PERFORMED DURING JULY, AUGUST AND SEPTEMBER FOR THE U.S. FOREST SERVICE IN ACCORDANCE WITH THE STATUTES OF OREGON AND THE BLM. MANUAL OF SURVEYING INSTRUCTIONS, 1973.

Clayton J. Martin RPLS # 1910