

- ① SEC. COR. S30, 29, 31, 32, T.3N., R.39E., W.M. FOUND 16"x19"x12" STONE WITH "X" ON TOP, 5 NOTCHES ON EAST FACE AND 1 NOTCH ON SOUTH FACE. 3 1/2" D.B.H. WHITE FIR, (20" D.B.H.), N. 25° E., 33', WITH 2 SEAMS AT FACE AND BT. LEVEL. 10" PINE STUB, BURNT, S. 40° W., 33', WITH SCRIBES T3N R39E S 1 BT. STUMP HOLE, N. 54° W., 31', NEW B.T. 16" D.B.H. WHITE FIR, N. 31° W., 23.6', SCRIBED T3N. R39E S30 BT., BRASS WASHER RPLS 1910. 8" D.B.H. WHITE FIR, S. 62° E., 8.3', SCRIBED T3N R39E S32 BT. BRASS WASHER RPLS 1910 BETWEEN B.T. 8" D.B.H. DOUGLAS FIR, S. 68° W., 29.8', SCRIBED T3N. R39E S31 BT., BRASS WASHER RPLS 1910 BETWEEN B.T. 2 STEEL FENCE POSTS N.S. OF COR. WITH SIGNS. SET A 2 1/2" DIAM. BRASS CAP IN A 2" X 30" IRON PIPE AT CORNER POINT AND BURIED STONE ALONGSIDE PIPE, BUILT STONE MOUND. CAP STAMPED PER SKETCH.
- ② 1/4 COR. S31, T3N., R39E., W.M. FOUND: NOTHING. SET A 2 1/2" DIAM. BRASS CAP IN A 2" X 30" IRON PIPE AT THE POINT FOR CORNER. CAP STAMPED PER SKETCH. CORNER POINT FITS VERY CLOSELY WITH TOPOGRAPHY CALLS OF RECORD: NEW B.T.S.; 12" D.B.H. WHITE FIR, S. 17° W., 18.6', SCRIBED 1/4 S32 B.T. 2.2" D.B.H. DOUGLAS FIR, N. 60° E., 5.6', SCRIBED 1/4 S29 B.T. BOTH B.T.S. HAVE BRASS RPLS 1910 WASHERS BETWEEN B.T.
- ③ SEC. COR. S29, 28, 32, 33, T3N., R39E., W.M. FOUND: A 2 1/2" DIAM. BRASS CAP SET 8" ABOVE GROUND IN A 2" IRON PIPE IN A STONE MOUND AND STAMPED PER SKETCH. A 14" D.B.H. PONDEROSA PINE, S. 45° W., 9 LINKS, WITH SCRIBING T3N R7 VISIBLE (ORIGINAL B.T.) B.T. STUB, S. 60° W., 30 LINKS, WITH SCRIBES N R39E S29 B.T. VISIBLE, (ORIG. B.T.) A 12" D.B.H. DOUGLAS FIR, N. 25° W., (19° SLOPE) 18.2', WITH PITCHED OVER SCRIBED FACE. AN 8" D.B.H. PONDEROSA PINE, N. 14° E., (36.7' SLOPE) 55.6' @ 15° 48' = 53.8', WITH SCRIBES T3N R39E S28 B.T. VISIBLE, A 12" D.B.H. PONDEROSA PINE, S. 58° E., (68.1' SLOPE) 68.44' @ 7° 49' = 67.8' WITH SCRIBES T3N R39E S33 B.T. A 44" D.B.H. DOUGLAS FIR SNAG, S. 81° E., 62 LINKS, WITH SCRIBING VISIBLE ON OPEN FACE. A 20" D.B.H. PINE STUB, N. 60° E., 53 LINKS, WITH SCRIBES VISIBLE. FENCE RUNNING SOUTH AND EAST.
- ④ 1/4 CORNER S31/S32, T3N., R39E., W.M. FOUND: NOTHING, THIS CORNER LIES IN A STEEP DRAW FACING NORTHEAST, THE STONE PROBABLY ROLLED OUT YEARS AGO. SET A 2 1/2" BRASS CAP IN A 2" X 30" IRON PIPE AT THE PROPORTIONAL POINT FOR THE CORNER. CAP STAMPED PER SKETCH. NEW B.T.S. 9" D.B.H. SPRUCE, N. 12° W., 47', SCRIBED 1/4 S31 B.T. 10" D.B.H. SPRUCE, N. 88° E., 12.8', SCRIBED 1/4 S32 B.T. BRASS RPLS 1910 WASHER BETWEEN B.T. ON BOTH B.T.S. STEEL FENCE POSTS 40" N.S. WITH SIGNS.
- ⑤ 4" D.B.H. SPRUCE WAS CHOSEN FOR A B.T. BECAUSE IT WAS THE BEST TREE AVAILABLE.
- ⑤ C1/4, S32, T3N., R39E., W.M. SET A 2 1/2" DIAM. BRASS CAP IN A 2" X 30" IRON PIPE AT POINT FOR CORNER, CAP STAMPED PER SKETCH. 8" D.B.H. WHITE FIR, N. 68° E., 25.5', SCRIBED C1/4 S32 B.T. 6" D.B.H. SPRUCE, N. 36° W., 5' SCRIBED C1/4 S32 B.T. CORNER LIES ON NORTH SLOPE IN DENSE STAND OF TIMBER. BOTH B.T.S. HAVE BRASS RPLS 1910 WASHERS BETWEEN B.T. STEEL FENCE POSTS 40" N.S.
- ⑥ C.E. 1/16, S32, T3N., R39E., W.M. SET A 2 1/2" DIAM. BRASS CAP AT THE POINT FOR THE CORNER, IN A 2" X 30" IRON PIPE, CAP STAMPED PER SKETCH. B.T.S. 12" D.B.H. WHITE FIR, S. 32° W., 28.5', SCRIBED C.E. 1/16 S32 B.T. 6" D.B.H. WHITE FIR, N. 39° E., 37.3', SCRIBED C.E. 1/16 S32 B.T. BOTH B.T.S. HAVE BRASS RPLS 1910 WASHERS BETWEEN B.T.
- ⑦ 1/4 COR. S32/S33, T3N., R39E., W.M. FOUND: A 2 1/2" DIAM. BRASS CAP SET 4" ABOVE GROUND IN A 2" G.I. PIPE IN A ROCK MOUND AND STAMPED PER SKETCH. FENCE IS 10' WEST. A 28" D.B.H. WHITE FIR, N. 82° E., (54 LINKS), 35.9', WITH SCRIBES 1/4 VISIBLE (ORIGINAL B.T.). A 10" D.B.H. TAMARACK, (N. 52° E.), N. 55° E., (58° SLOPE) 57.9', WITH SCRIBING VISIBLE ON PARTIALLY HEALED FACE. A 12" D.B.H. WHITE FIR, N. 67° W., (40° SLOPE), 39.6' @ 11° 40' = 38.8' WITH SCRIBING VISIBLE ON PARTIALLY HEALED FACE. COR. IS ON EAST SLOPE. B.T. TAGS AND ATTENTION SIGNS.
- ⑧ COR. SEC. 516, T2N., R39E., & SEC. 31 & 32, T3N., R39E., W.M. FOUND A 2 1/2" DIAM. BRASS CAP SET 6" ABOVE GROUND IN A 2" IRON PIPE IN A ROCK MOUND AND STAMPED PER SKETCH. 12" D.B.H. DOUGLAS FIR, N. 30° E., 29.1', (N. 42° E.) (29.7'), SCRIBED T3N. R39E S32 B.T. B.T. TAG. 7" D.B.H. PONDEROSA PINE N. 30° W., 34.9', SCRIBED T3N., R39E S32 BT. BRASS TAG RLS 346, B.T. TAG, STEEL FENCE POST 5.8' EAST. 10" D.B.H. PONDEROSA PINE, S37° E., 49.4' (49.7') WITH SCRIBES T2N R39E S5 BT. BRASS TAG RLS 346, B.T. TAG. 18" D.B.H. PONDEROSA PINE SNAG, N. 30° E., 15.8' (N. 42° E.), WITH SCRIBES T3N. R39E S32 B.T. BRASS TAG RLS 346, B.T. TAG.
- ⑨ 1/4 COR. S32/T3N., R39E., W.M. FOUND: A 2 1/2" DIAM. BRASS CAP SET 18" ABOVE GROUND IN A 2" DIAM. G.I. PIPE IN A ROCK MOUND & STAMPED PER SKETCH. A 16" D.B.H. (32") DOUGLAS FIR S. 07° W., 21.8' (22.8') SCRIBED 1/4 S5 BT. BRASS TAG, A 16" D.B.H. PONDEROSA PINE, N. 08° W., (14.5') 17.3', SCRIBED 1/4 S BT. (ORIGINAL) B.T. TAGS, ATTENTION SIGNS.
- ⑩ E 1/16, S32, T3N., R39E., W.M. SET A 2 1/2" DIAM. BRASS CAP IN A 2" X 30" IRON PIPE AT POINT FOR CORNER, CAP STAMPED PER SKETCH. 18" D.B.H. DOUGLAS FIR, N. 11° W., 31.5', SCRIBED E 1/16 S32 B.T. 8" D.B.H. DOUGLAS FIR, S. 48° W., 12.9', SCRIBED E 1/16 S5 B.T.
- ⑪ SEC. COR. S32/T3N., R39E., W.M. FOUND: A 2 1/2" DIAM. BRASS CAP SET 2" ABOVE GROUND IN A 2" G.I. PIPE IN A ROCK MOUND AND MARKED PER SKETCH. AN 8" D.B.H. WHITE FIR, N. 48° E., 16.2', SCRIBED T3N. R39E. S33 B.T., BRASS TAG. 10" D.B.H. MAPLE BLOW DOWN, N. 57° E., 11.9', SCRIBING VISIBLE (ORIGINAL B.T.). 12" (10") D.B.H. WHITE FIR, S. 23° E., 62.2', SCRIBED T2N R39E S5 BT. BRASS TAG 18" (20") D.B.H. WHITE FIR, N. 75° W., (22.2') 22.4', SCRIBED T3N. R39E. S32 B.T. BRASS TAG. 24" D.B.H. WHITE FIR, S. 62° W., 26.6', SCRIBED T2N R39E S5 BT. BRASS TAG. A STEEL FENCE POST WAS PLACED 40" FROM EACH CORNER ON LINE OR N.S. AT C1/4 COR., WITH SIGN ATTACHED.

NOTE: ALL B.T.S. HAVE B.T. TAGS, ATTENTION SIGNS AND RED PAINTED BANDS.

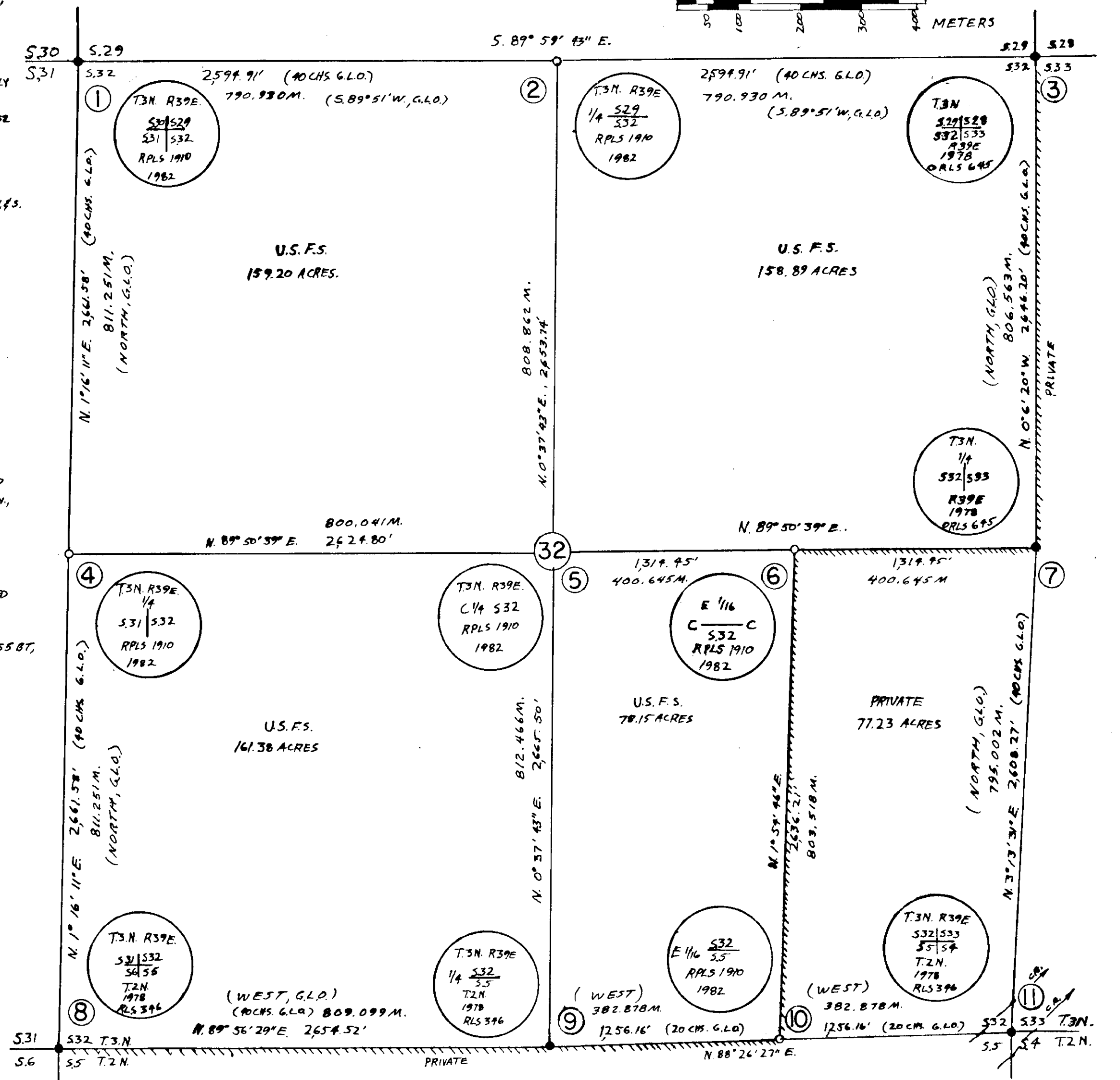
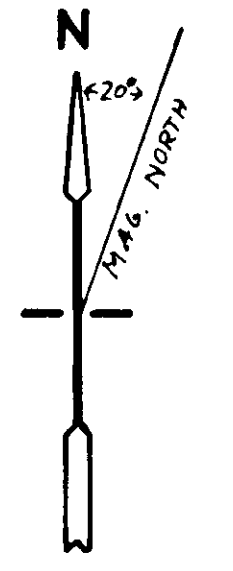
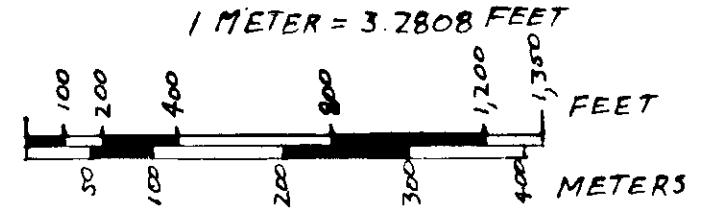
BEARINGS BASED ON SOLAR OBSERVATIONS.  
 G.L.O. DISTANCES AND BEARINGS ARE IN BRACKETS ( )  
 BOUNDARY POSTED WITH STEEL FENCE POSTS AND U.S.F.S. BOUNDARY SIGNS.  
 DIAM. = DIAMETER ALUM. = ALUMINUM G.L.O. = GENERAL LAND OFFICE B.L.M. = BUREAU OF LAND MANAGEMENT MAG. = MAGNETIC

**NARRATION**  
 THE SOUTH LINE TO T3N., R39E., WAS SURVEYED IN 1881 BY RUFUS S. MOORE. THE TOWNSHIP WAS SUBDIVIDED BY FRANK W. CAMPBELL IN 1884. THE SOUTH LINE OF SECTION 32 WAS REMONUMENTED IN 1978 BY WAYNE D. HARRIS, THE EAST 1/4 CORNER AND NORTHEAST CORNER BY JAMES H. HAMBLETON IN 1978. I RAN A RANDOM TRAVERSE AROUND THE SECTION CONNECTING ALL THE FOUND CORNERS, CLOSED AND BALANCED THE TRAVERSE, SET A POINT FOR THE MISSING CORNERS AND MADE MY CORNER SEARCH. AFTER NOT FINDING THE MISSING CORNERS I THEN SET THEM USING PROPORTIONAL MEASURE. RECORD TOPOGRAPHY DOES NOT FIT THE W 1/4 CORNER. THE NORTH 1/4 CORNER FITS THE RECORD TOPOGRAPHY CLOSELY. THE EXTERIOR 1/16 CORNERS WERE SET AND THEN A TRAVERSE WAS RUN THROUGH THE SECTION, CLOSED AND BALANCED, THEN THE INTERIOR CORNERS WERE SET. THE PURPOSE OF THIS SURVEY WAS TO ESTABLISH THE BOUNDARY BETWEEN THE NATIONAL FOREST AND PRIVATE LAND.

ALL DISTANCES TO BEARING TREES ARE TO CENTER OF TREE 1 FOOT ABOVE ROOT CROWN.

REGISTERED PROFESSIONAL LAND SURVEYOR  
 Clayton J. Martin  
 CLAYTON J. MARTIN  
 1910  
 C.J. MARTIN SURVEYING  
 2751 BUCKLEBERRY CT.  
 SWEET HOME, OR 97386

SURVEY FOR U.S. FOREST SERVICE  
 UMATILLA NATIONAL FOREST  
 CONTRACT NO 53-04R3-2-01243  
 SEC. 32, T.3N., R.39E., W.M.  
 UNION COUNTY, OREGON  
 SCALE 1"=500' MAY-SEP, 1982  
 SURVEYOR: CLAYTON J. MARTIN RPLS 1910  
 CHAINMEN: J. MARTIN, B. WILSON, R. GERIG  
 MONUMENT FOUND •  
 MONUMENT SET •



UNION COUNTY SURVEYOR

Date Received 10-7-82

Date Filed 10-29-82

By G. LANGRISH DEPUTY

File No. 45-82

I, CLAYTON J. MARTIN, A REGISTERED LAND SURVEYOR IN THE STATE OF OREGON, HEREBY CERTIFY THAT THIS PLAT IS A CORRECT REPRESENTATION OF A SURVEY I PERFORMED DURING MAY, JUNE, JULY, AUGUST, AND SEPTEMBER FOR THE U.S. FOREST SERVICE IN ACCORDANCE WITH THE STATUTES OF OREGON AND THE B.L.M. MANUAL OF SURVEYING INSTRUCTIONS, 1973. Clayton J. Martin RPLS # 1910