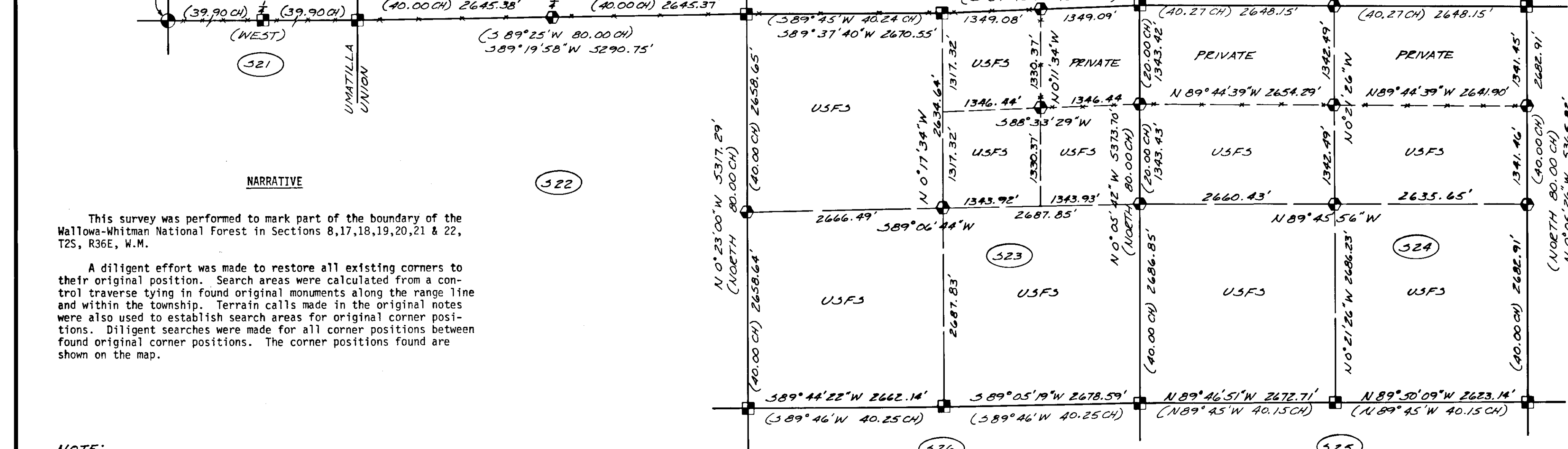


FOUND 2 1/2" PIPE WITH BRASS CAP BY UMATILLA CO. SURVEYOR FROM ORIGINAL EVIDENCE



NARRATIVE

This survey was performed to mark part of the boundary of the Wallowa-Whitman National Forest in Sections 8,17,18,19,20,21 & 22, T2S, R36E, W.M.

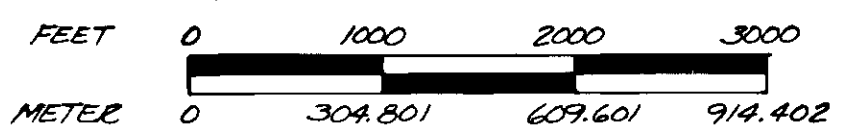
A diligent effort was made to restore all existing corners to their original position. Search areas were calculated from a control traverse tying in found original monuments along the range line and within the township. Terrain calls made in the original notes were also used to establish search areas for original corner positions. Diligent searches were made for all corner positions between found original corner positions. The corner positions found are shown on the map.

NOTE:

BOUNDARY LINE POSTING CONSISTS OF PLACING STEEL POSTS INTERVISIBLY ALONG AND WITHIN ONE FOOT OF THE TRUE LINE WITH A FOREST SERVICE SIGN ATTACHED INDICATING THE LOCATION OF NATIONAL FOREST LAND. TRUE LINE WAS ESTABLISHED BETWEEN EXISTING CORNERS BY DIRECT SIGHTING OR BY CALCULATED OFFSETS FROM A RANDOM TRAVERSE. MEASURED BEARINGS AND DISTANCES ARE NOT SHOWN ON LINES WHERE THE CONTROLLING CORNERS WERE EXISTING DUE TO THE USE OF A LOW ORDER SURVEY TO LOCATE THE TRUE LINE.

METRIC EQUIVALENT

1 METER = 3.2808333 FEET



LEGEND

- Found monument as described
- Set 2 1/2" x 30" galv. pipe with brass cap from evidence of the original survey & described on land corner monumentation record referenced on this sheet
- Set 2 1/2" x 30" galv. pipe with brass cap by survey & described on land corner monumentation record referenced on this sheet
- Record dimension per G.L.O. survey (Moore, 1882)
- Posted boundary line

BASIS OF BEARING

POLARIS OBSERVATION TAKEN AT TRAVERSE POINT A0-T, 740 FT. EAST OF THE NORTH 1/4 CORNER OF SECTION 8, T.23, R.36E, AND THE TRAVERSE POINT E-3EJ-17-2, 900 FT. EAST & 100 FT. NORTH OF THE SOUTH 1/4 CORNER OF SECTION 17, T.23, R.36E.

MEAN MAGNETIC DECLINATION

18 1/2° EAST

I, Gary L. Langlitz, a registered land surveyor in the State of Oregon, hereby certify that this plat and the notes hereon, or attached, are a correct representation of a survey I performed during July, 1981 - September, 1982, for the U.S. Forest Service, in accordance with the statutes of the State of Oregon and with the Articles of the Stiff Bodie Cadastral Survey, Contract No. 53-04M3-1-2672N.

Gary L. Langlitz (s) Gary L. Langlitz Registered Land Surveyor Oregon License 1099



REFERENCE MATERIAL

RECORDS OF ORIGINAL PUBLIC LAND SURVEYS OF T.23, R.36 E, W.M. BY RUFUS S. MOORE, CONTRACT NO. 451, JUNE 12, 1882.

UNION COUNTY MONUMENTATION RECORDS. "MANUAL OF SURVEYING INSTRUCTIONS, 1973", U.S. DEPT. OF THE INTERIOR, BUREAU OF LAND MANAGEMENT.

FIELD BOOKS 7-13 STIFF BODIE CADASTRAL SURVEY CONTRACT NO. 53-04M3-1-2672N.

SEE ALSO "CERTIFIED RECORD OF LAND CORNER MONUMENTATION" FORMS FILED CONCURRENTLY WITH THIS SURVEY FOR T.23, R.36E AS FOLLOWS: N-13, N-17, N-19, N-20, N-21, N-23, N-25, O-20, O-21, O-23, O-25, P-17, P-19, P-21, P-23, P-25, R-17, R-19, R-21, R-23 AND R-25.

UNION COUNTY SURVEYOR. Date Received 10-4-82. Date Filed 10-4-82. By G. LANGLITZ, Deputy. File No. 43-82.

STIFF BODIE CADASTRAL SURVEY CONTRACT NO. 53-04M3-1-2672N LOCATED IN SECTIONS 22, 23, & 24, T. 23, R. 36E, W.M. UNION COUNTY, OREGON. FOR: U.S. DEPT. OF AGRICULTURE, U.S. FOREST SERVICE. SCALE: 1" = 1000'. DATE: 1982. JOB NO. 830-90. SHEET NO. 2/3. anderson perry & associates, inc. engineering • surveying • materials testing. LA GRANDE, ORE. & WALLA WALLA, WASH.