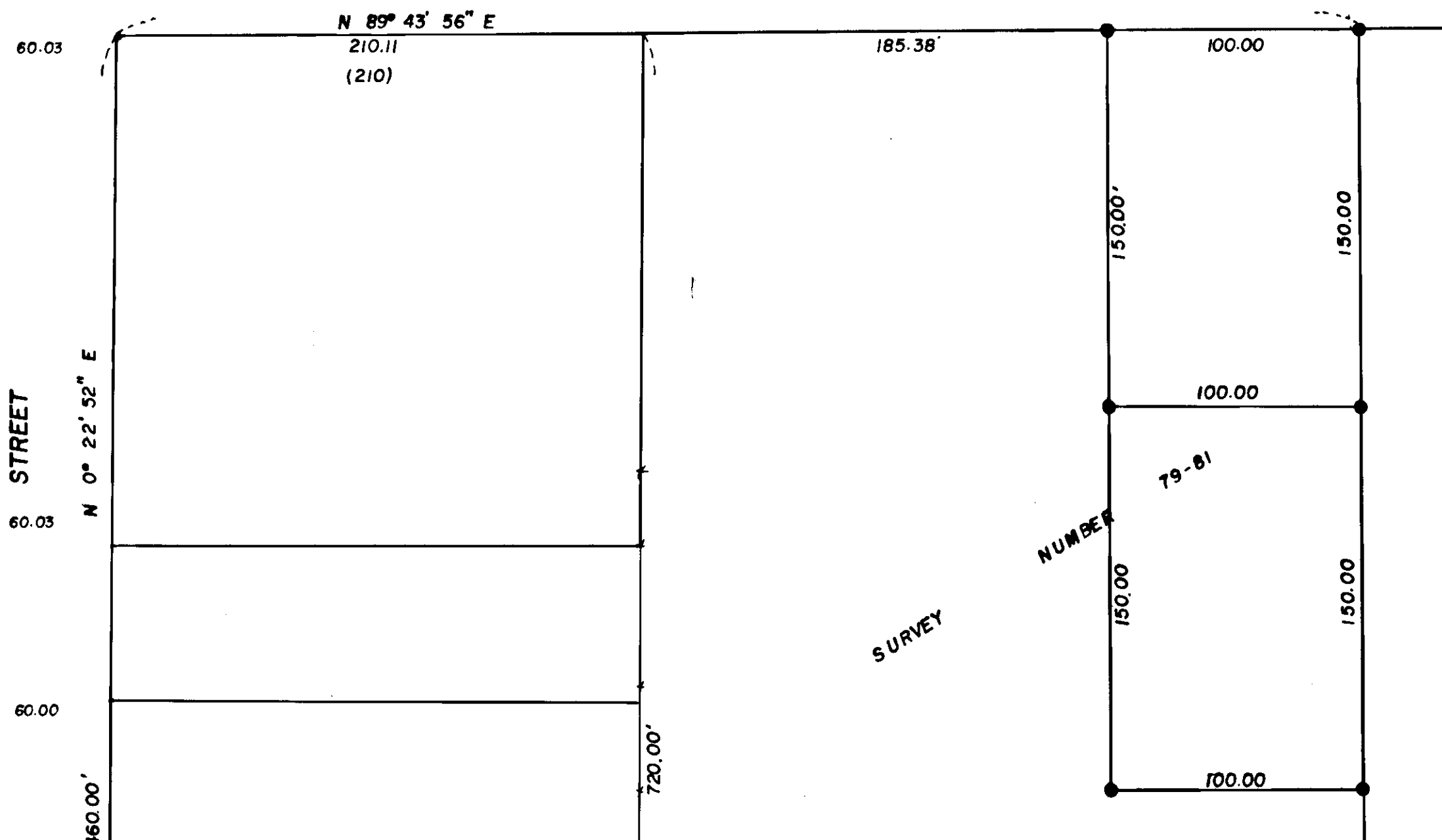


BLOCK 23 TOWN OF UNION

FULTON

STREET



BASIS OF BEARING

Solar observation at the northwest corner of section 19, T. 4S, R. 40 E.

LEGEND

- Found monument of record
- Set 5/8" x 30" iron pin with plastic cap marked BGA SURVEY MARKER
- () Record bearing or distance
- Existing fence line

NARRATIVE

This survey was ordered by Earl Sanders. The blocks South of Fulton Street and East of Main Street were created by metes and bounds description with the streets junior to the parcels. The blocks were created by beginning at various block corners of the Town of Union. The block we have surveyed had its beginning at the Southwest corner of Block 23, Town of Union. These Block corners were established on the basis of survey numbers 19-79 and 16-79. I have run the North-South lines of the blocks parallel with the centerline of Main Street, and the East-West lines parallel with Fulton Street. The most Easterly line of the blocks was established by Survey Number 79-81. I feel that this line is the most harmonious, and therefore I throw all of the error on the most Easterly line of the blocks. I have given all blocks full measure, and establish the blocks as per original description.

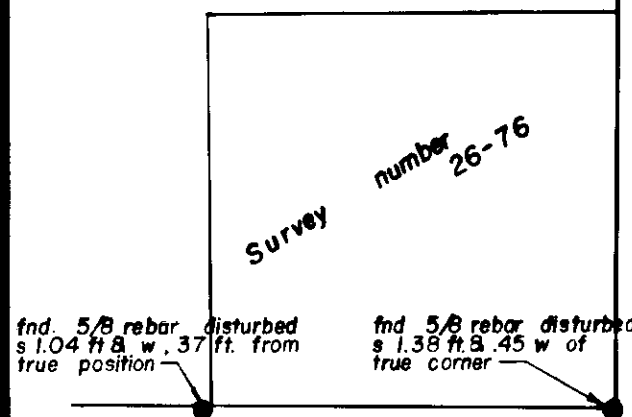
REFERENCE MATERIAL

- Survey Number 113-78
 - Survey Number 16-79
 - Survey Number 19-79
 - Survey Number 26-76
- DEEDS
- Book P Page 69
 - Microfilm Number 60469
 - Microfilm Number 67768

REGISTERED PROFESSIONAL LAND SURVEYOR

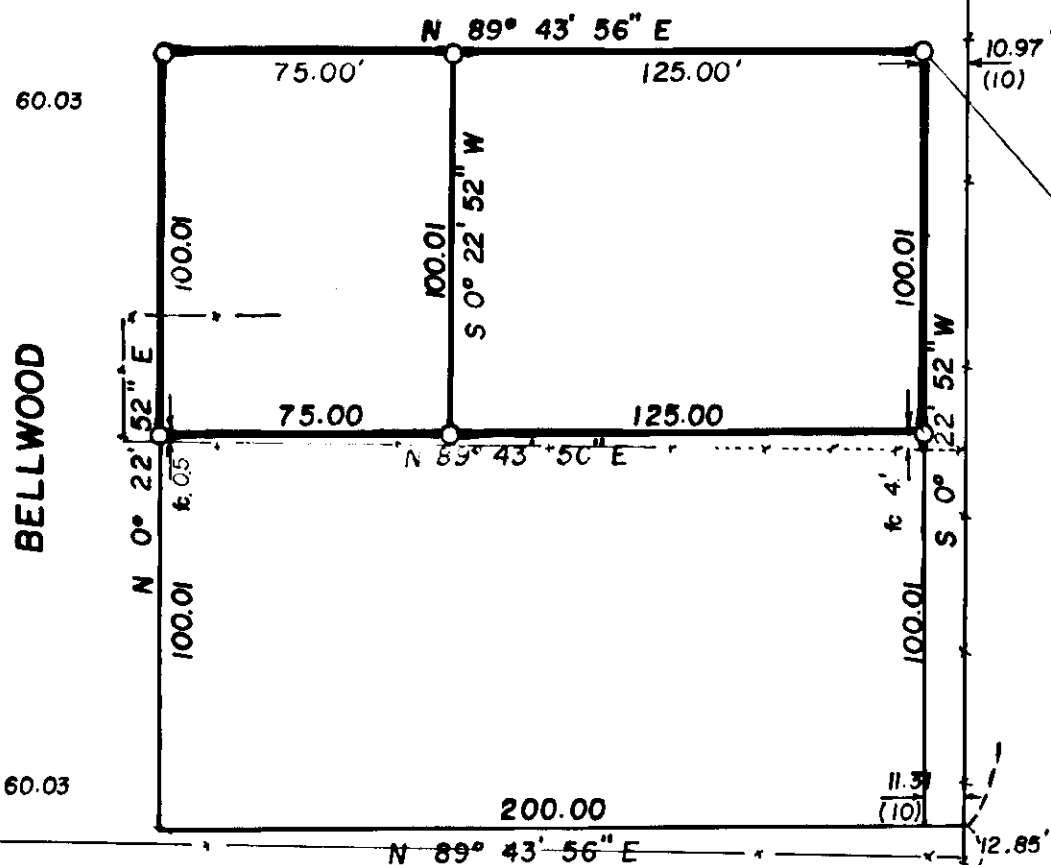
Gregory T. Blackman

OREGON JULY 13, 1973 GREGORY T. BLACKMAN 991



HARRISON

STREET



UNION COUNTY SURVEYOR

Date Received 2-19-82
 Date Filed 2-26-82
 By G. LANGLITS, DEPUTY
 File No. 7-82

BAGETT - GRIFFITH & ASSOCIATES

La Grande, Oregon
 Map of Survey in Union
 Parcel in the Southeast quarter of the Northwest quarter of Section 19, Township 4 South, Range 40 East, W. M.
 UNION COUNTY, OREGON

SURVEYED FOR	Earl Sanders	
SURVEYED BY	GTB	2/82
Scale: 1" = 50'	Drawn by: GTB	2/82