

BASIS OF BEARING

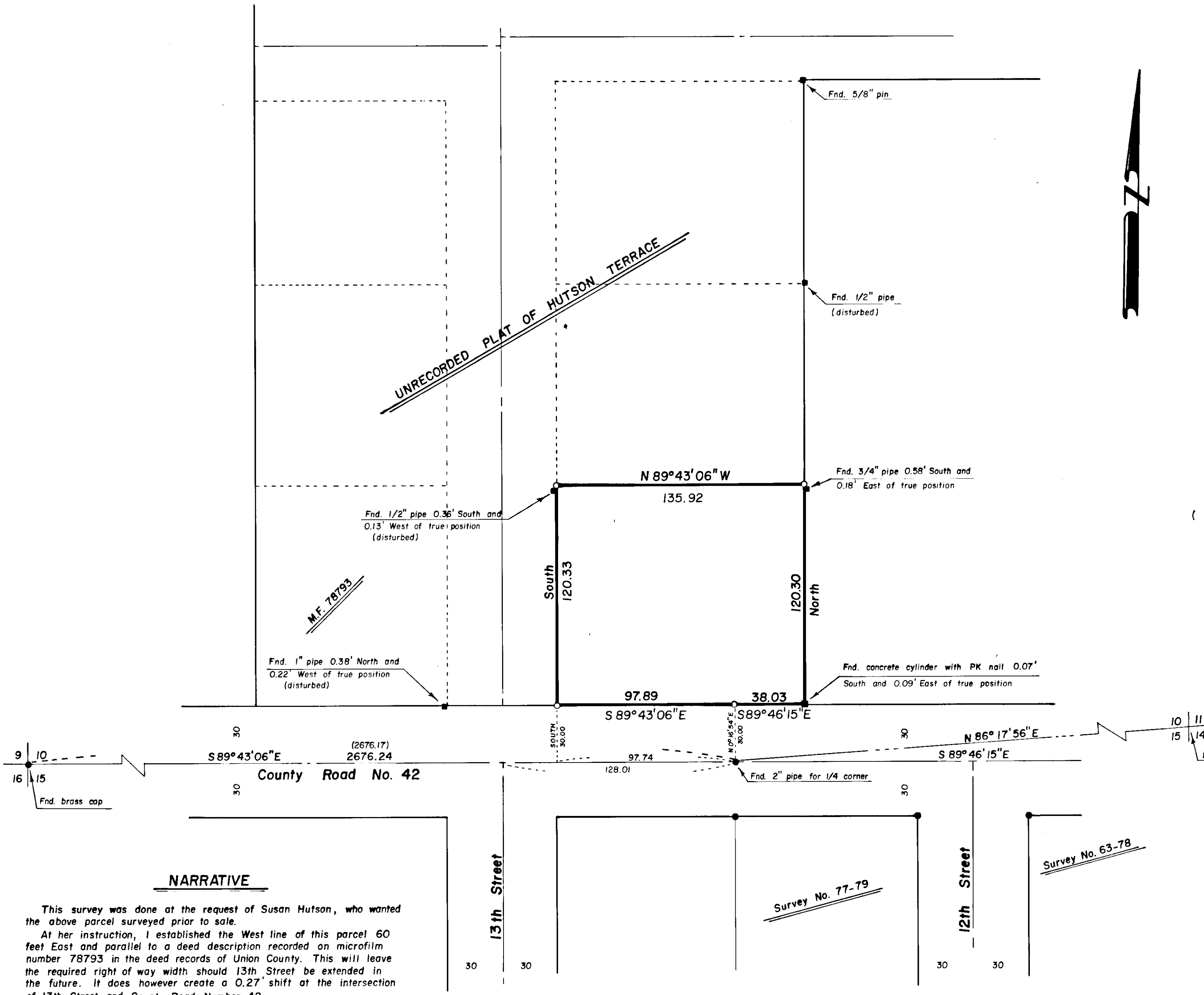
Survey Number 150-78

REFERENCE MATERIAL

- Unrecorded plat of Hutson Terrace
- Survey Number 31-72
- Survey Number 35-78
- Survey Number 63-78
- Survey Number 150-78
- Survey Number 77-79

LEGEND

- Found monument of record
- Found unrecorded monument
- Set 5/8"x30" iron pin with plastic cap marked BGA SURVEY MARKER
- () Record distance



NARRATIVE

This survey was done at the request of Susan Hutson, who wanted the above parcel surveyed prior to sale.

At her instruction, I established the West line of this parcel 60 feet East and parallel to a deed description recorded on microfilm number 78793 in the deed records of Union County. This will leave the required right of way width should 13th Street be extended in the future. It does however create a 0.27' shift at the intersection of 13th Street and County Road Number 42.

This area was pinned as a subdivision in 1978 by Ronald Brazeau, but the subdivision was never filed. I therefore show his monuments as unrecorded. This survey was intended to retrace one of the lots of the subdivision. However, in order to maintain a 60 foot separation from the parcel already deeded, I have shifted the West line approximately 0.3', I also shifted the North line by approximately the same to maintain the square footage as originally intended.

The South line of the surveyed parcel has an angle point in it to reflect the angle point in County Road Number 42 as established in Surveys 150-78 and 77-79.

I find no unusual problems on this survey.

UNION COUNTY SURVEYOR

Date Received 10/12/81

Date Filed 10-12-81

By G. LANGRISH, Deputy

File No. 68-81

REGISTERED PROFESSIONAL LAND SURVEYOR

Gregory T. Blackman

OREGON
JULY 13, 1973
GREGORY T. BLACKMAN
991

BAGETT - GRIFFITH & ASSOCIATES
La Grande, Oregon

Map of Survey

Parcel in the SW 1/4 of the SE 1/4 and the SE 1/4 of the SW 1/4 of Section 10, Township 1 North, Range 39 East of the Willamette Meridian
Elgin
UNION COUNTY, OREGON

SURVEYED FOR	Susan Hutson	
SURVEYED BY	GTB	10/81
Scale: 1" = 40'	Drawn by: RGR	10/81