

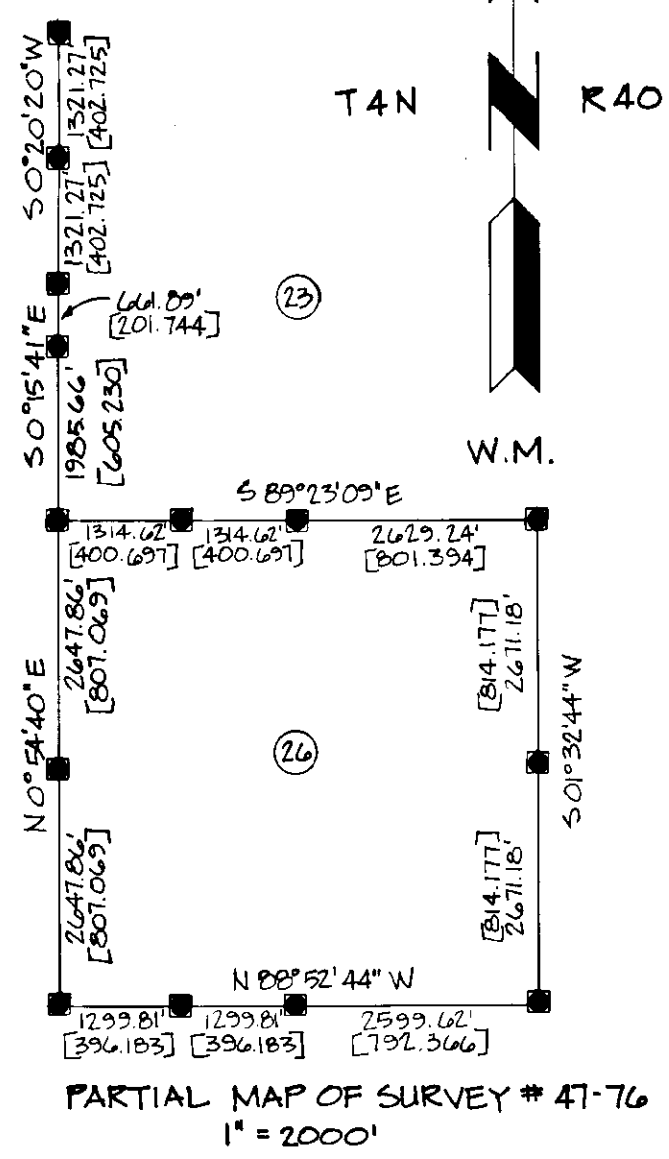
SECTIONS 23, 26 & 35

SURVEY HISTORY

T4N, R40E, W.M. WAS SURVEYED BY FRANK W. CAMPBELL, DURING AUGUST, 1884, UNDER G.L.O. CONTRACT NUMBER 507. HANLEY ENGINEERING OF BAKER, OREGON SURVEYED PARTS OF SECTIONS 23, 26 & 35 UNDER U.S.F.S. CONTRACT DURING 1975 & 76. THIS SURVEY IS FILED AT UNION COUNTY SURVEYORS OFFICE AS SURVEY NUMBER 47-76.

LEGEND

- FOUND CORNER OF RECORD (BRASS CAP)
- FOUND ORIGINAL CORNER EVIDENCE AND SET MONUMENT AS DESCRIBED.
- ⊕ SET MONUMENT FROM SURVEY AS DESCRIBED ON U.S.F.S. FORM RG-7100-57.
- ▲ SET REFERENCE MONUMENT AS DESCRIBED ON U.S.F.S. FORM RG-7100-57.
- CORNER SEARCHED FOR, NOT FOUND.
- POSTED BOUNDARY
- [] METERS
- () RECORD DATA
- Ⓣ SECTION NUMBERS
- REFER TO SURVEY #47-76



NOTES

FORM RG-7100-57 FILED AT UNION COUNTY SURVEYORS FOR STANDARD INDEX FILE NUMBERS IN T4N, R40E, W.M. N-21, O-18, P-18, P-21, Q-17, Q-18, S-17, S-18, S-19, T-18, T-19, X-17, X-18, X-21, Z-19, Z-21 AND Z-25. WALLOWA COUNTY SURVEYORS FOR STANDARD INDEX FILE NUMBER IN T4N, R40E, W.M., Z-17, Z-19, Z-21 AND Z-25.

REFERENCE MATERIAL

ORIGINAL G.L.O. PLAT & NOTES
 SURVEY # 47-76
 FIELD BOOKS 1-5

BASIS OF BEARING

SURVEY # 47-76 FORM 1/4 CORNER TO WEST 1/16 CORNER OF SECTIONS 26 & 35.

NEW BEARING TREE:
 V-17 CORNER OF SECTIONS 26, 27, 34 AND 35.
 12" DOUGLAS FIR, BEARS N27°E, 33.3 FT.
 SCRIBED T4N, R40E, S26 BT.

MEAN MAGNETIC DECLINATION

N 20° 00' E

I, BARRY B. BARBOUR, a registered land surveyor in the State of Oregon, hereby certify that this plat and the notes hereon, or attached, are a correct representation of a survey I performed during May-July 1981, for the U.S. Forest Service in accordance with the Statutes of the State of Oregon and with the articles of the contract.

Barry B. Barbour

Barry B. Barbour
 Registered Land Surveyor
 Oregon License 1051

UNION COUNTY SURVEYORS

Date Received 9-1-81

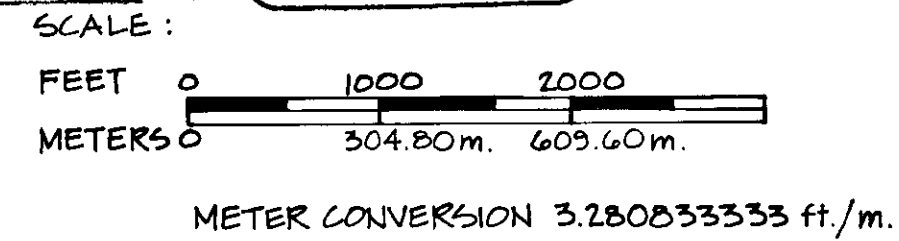
Date Filed 9-2-81

By G. LANGLITE, DEPUTY

File No. 62-81

REGISTERED PROFESSIONAL LAND SURVEYOR

Barry B. Barbour
 OREGON
 OCT. 17, 1975
 BARRY B. BARBOUR
 1051



NOTE: FROM REFERENCE MONUMENT COMPUTED SECTION CORNER BEARS S33°58'46" W, 267.92 FT. [81.662]

N89°45'28" E 5176.78' [1577.883]

1/4 S1

T4N R40E S36

S1 T3N R40E

CONTRACT NUMBER 53-04R3-1-01162

SECTIONS 23, 26 & 35, T4N, R40E, W.M.		
UNION & WALLOWA COUNTIES, OREGON		
UMATILLA NATIONAL FOREST		
SCALE	BARRY B. BARBOUR	SHEET NO.
1" = 1000'	PROFESSIONAL LAND SURVEYOR	1
DATE		
MAY - JUL 1981		