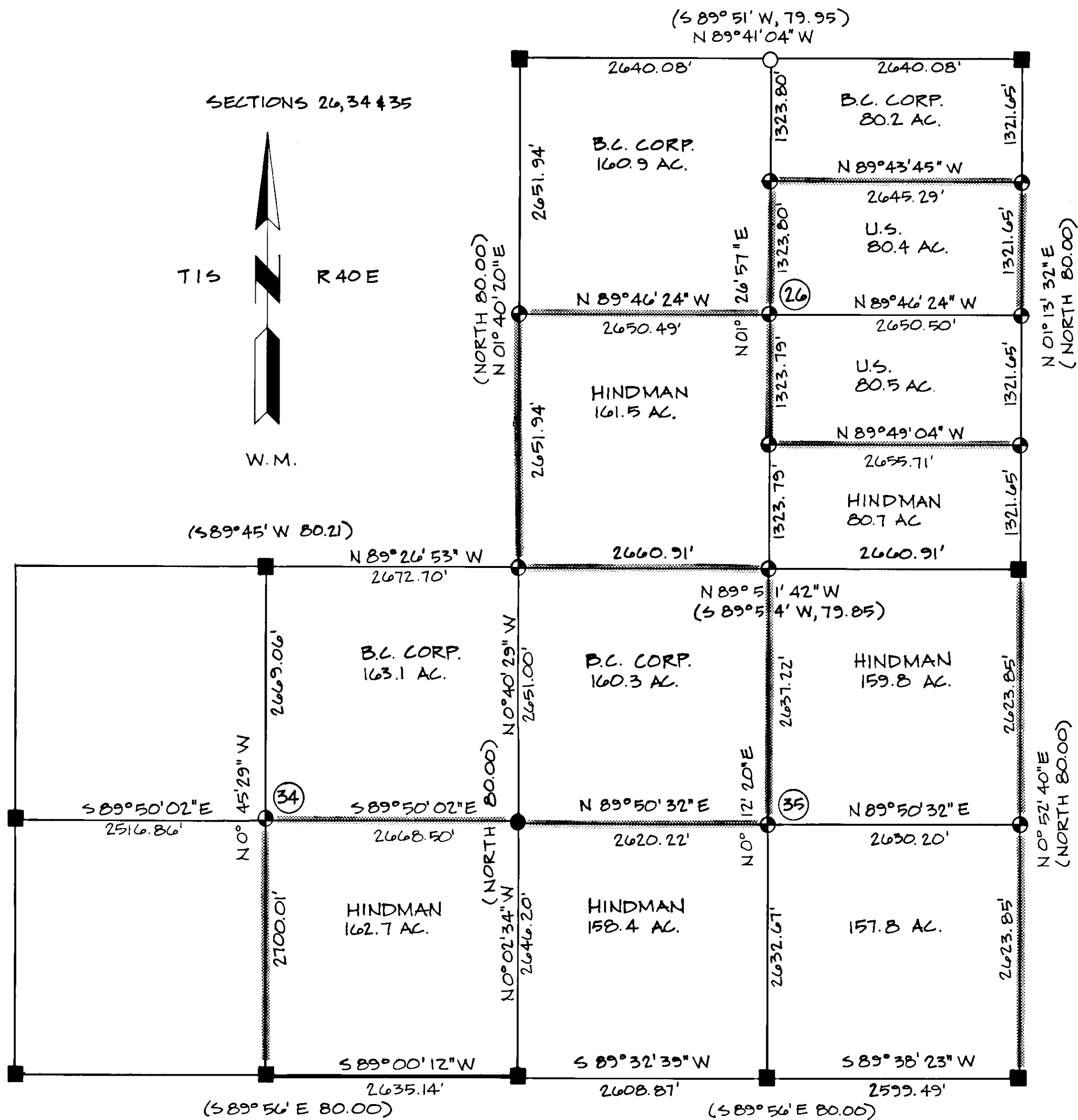
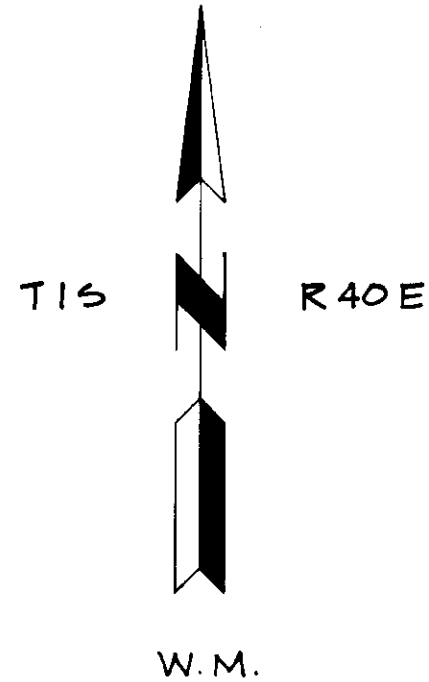


SECTIONS 26, 34 & 35



**BASIS OF BEARING**

SOLAR OBSERVATION

**MEAN MAGNETIC DECLINATION**

N 20° 00' E

**LEGEND**

- FOUND CORNER OF RECORD (BRASS CAP)
- FOUND ORIGINAL CORNER EVIDENCE & SET MONUMENT AS DESCRIBED
- ⊕ SET MONUMENT FROM SURVEY AS DESCRIBED ON FORM RG-7100-57.
- CORNER SEARCHED FOR, NOT FOUND, NOT SET THIS SURVEY.
- LINE POSTED U.S.F.S. STANDARD
- ▬ MARKED PROPERTY LINE
- ( ) RECORD BEARING & DISTANCE
- Ⓢ SECTION NUMBERS

**REFERENCE MATERIAL**

ORIGINAL G.L.O. PLAT & NOTES  
FIELD BOOKS 1-5.

**SURVEY HISTORY**

T1S, R40E, W.M. WAS SURVEYED BY HENRY MELDRUM, DURING AUGUST, 1882, UNDER G.L.O. CONTRACT NUMBER 450.

**NOTES**

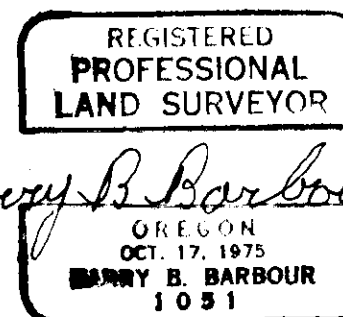
FORM RG-7100-57 FILED AT UNION COUNTY SURVEYORS FOR FOR STANDARD INDEX FILE NUMBERS IN T1S, R40E, W.M. - R-17, R-21, S-19, S-21, T-17, T-19, T-21, U-19, U-21, V-15, V-17, V-19, V-21, X-13, X-15, X-19, X-21, Z-13, Z-15, Z-17, Z-19 AND Z-21.

UNION COUNTY SURVEYOR	
Date Received	8-24-81
Date Filed	8-27-81
By	G. LANGRISH Deputy
File No.	87-81

I, BARRY B. BARBOUR, a registered land surveyor in the State of Oregon, hereby certify that this plat and the notes hereon, or attached, are a correct representation of a survey I performed during November, 1980 to August, 1981 for Boise Cascade Corp. in accordance with the Statutes of the State of Oregon.

*Barry B. Barbour*

Barry B. Barbour  
Registered Land Surveyor  
Oregon License 1051



*Barry B. Barbour*

SECTIONS 26, 34, & 35, T1S, R40E, W.M.  
UNION COUNTY, OREGON  
BOISE CASCADE CORP.

SCALE 1" = 1000'	BARRY B. BARBOUR PROFESSIONAL LAND SURVEYOR	SHEET NO. 1
DATE AUG., 1981		