

BASIS OF BEARING

Forward bearing as published by the U.S.C.
& G.S. from Δ College to Δ Valley

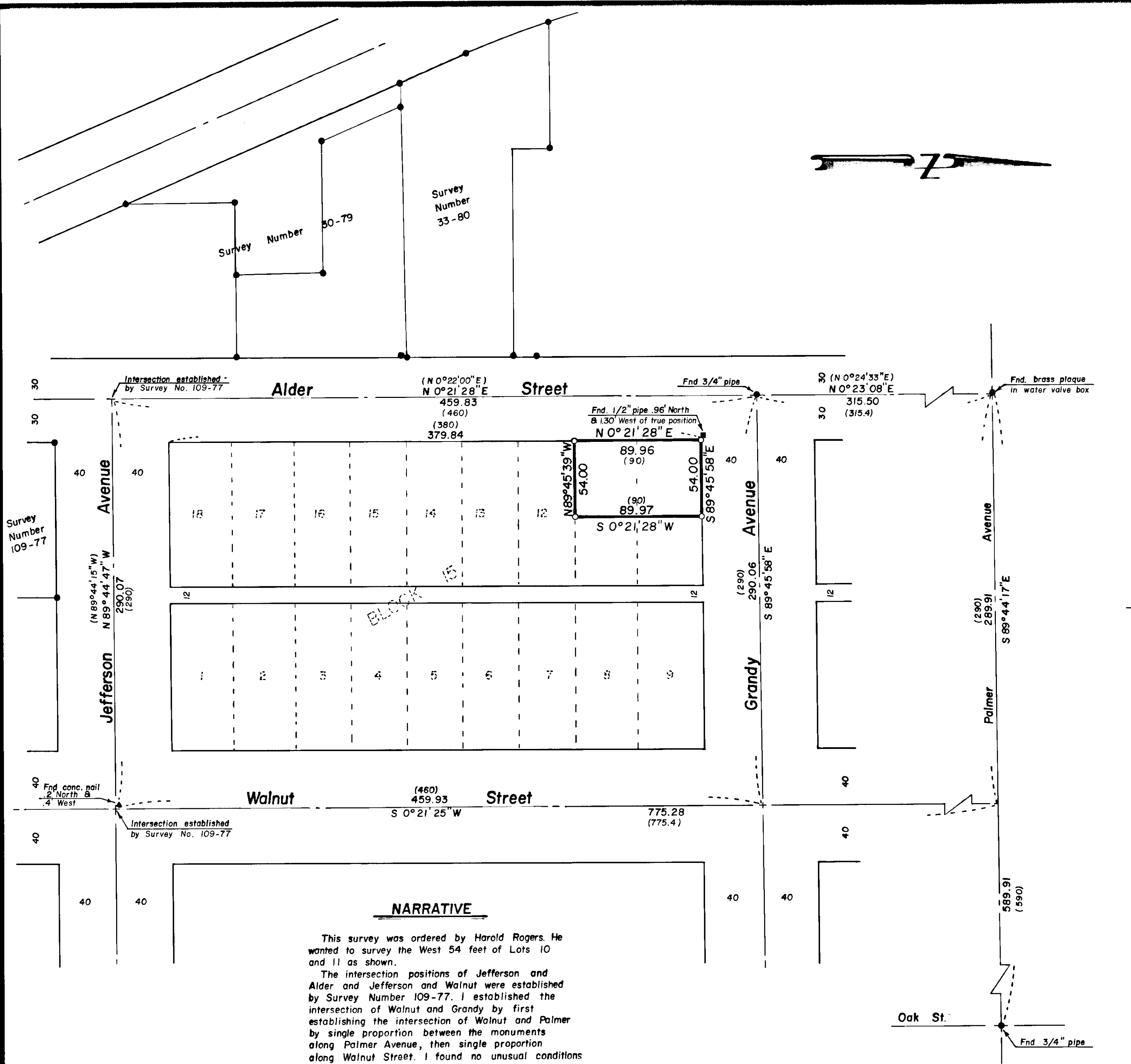


REFERENCE MATERIAL

1922 Remonumentation of La Grande
Supplemental plat of Grandy's 2nd Addition
Survey Number 1-62
Survey Number 10-71
Survey Number 66-76
Survey Number 109-77
Survey Number 30-79
Survey Number 33-80

LEGEND

- Found monument of record
- Set 5/8"x 30" iron pin with plastic cap marked BGA SURVEY MARKER
- Found unrecorded monument
- () Record distance or bearing
- - - Centerline



NARRATIVE

This survey was ordered by Harold Rogers. He wanted to survey the West 54 feet of Lots 10 and 11 as shown.

The intersection positions of Jefferson and Alder and Jefferson and Walnut were established by Survey Number 109-77. I established the intersection of Walnut and Grandy by first establishing the intersection of Walnut and Palmer by single proportion between the monuments along Palmer Avenue, then single proportion along Walnut Street. I found no unusual conditions on this survey.

**REGISTERED
PROFESSIONAL
LAND SURVEYOR**

Gregory T. Blackman

OREGON
JULY 13, 1973
GREGORY T. BLACKMAN
991

BAGETT - GRIFFITH & ASSOCIATES La Grande, Oregon		
Map of Survey The West 54 feet of Lots 10 and 11, Block 15, Supplemental Plat of Grandy's Second Addition to La Grande UNION COUNTY, OREGON		
SURVEYED FOR	Harold Rogers	
SURVEYED BY	G T B	4/81
Scale: 1" = 50'	Drawn by: RGR	4/81

26-81