



BASIS OF BEARING

Survey no. 62-74

NARRATIVE


Survey was made at the request of the Union Soil & Water Conservation Service to locate the parcel hereon shown. The center-south 1/16 corner monument has been destroyed. I accept the position as shown, based on survey numbers 19-70 & 57-73 as these are in harmony in the east-west position; all three are in harmony in the north-south position.

Duane I. Griffith
Duane I. Griffith PLS 644

REGISTERED
PROFESSIONAL
LAND SURVEYOR

Duane I. Griffith

OREGON
JULY 10, 1964
DUANE I. GRIFFITH
644

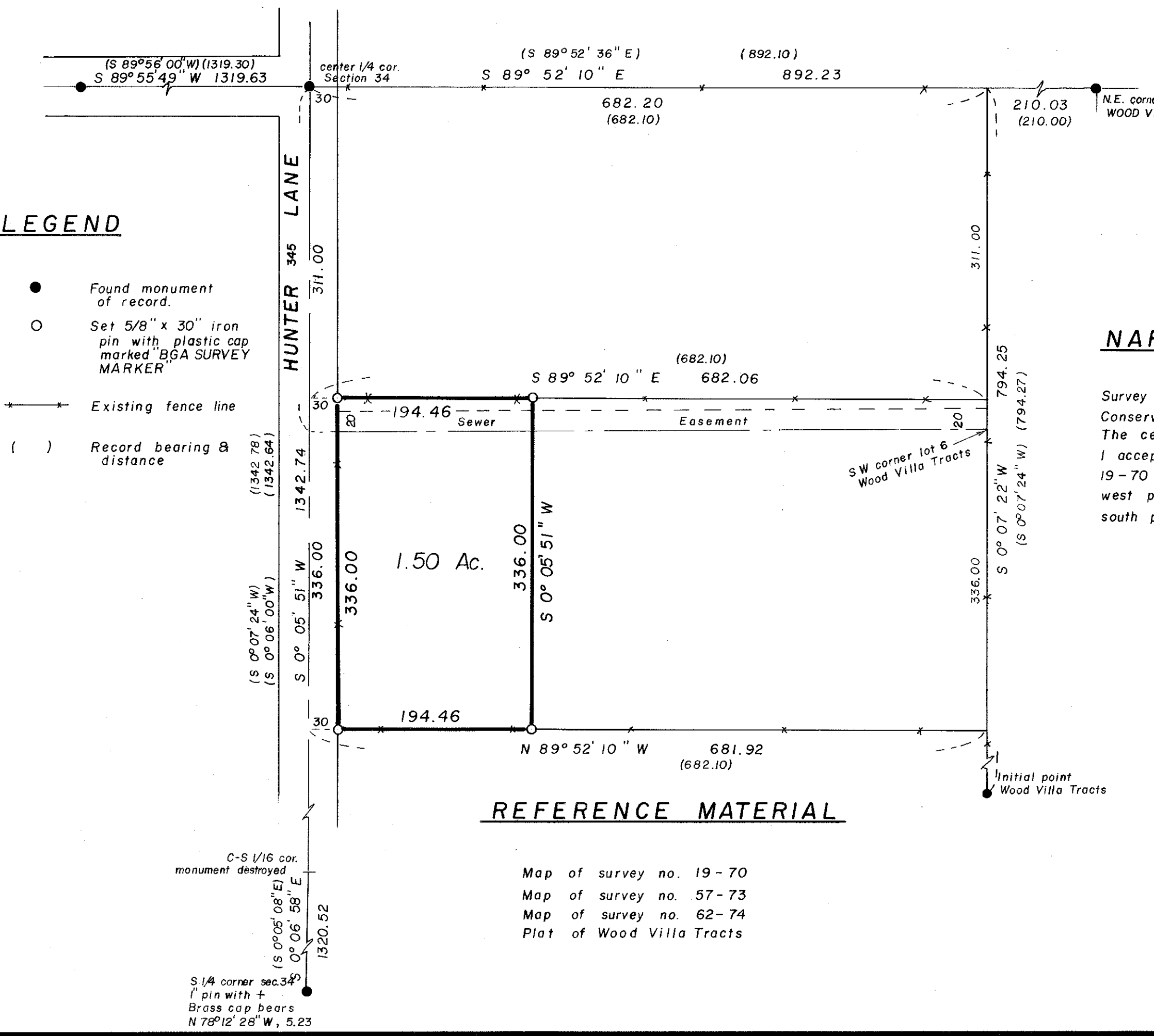
 BAGETT - GRIFFITH & ASSOCIATES LaGrande, Oregon		
MAP OF SURVEY A Parcel in the NW 1/4 of the SE 1/4 of Section 34, T 2 S, R 38 E, W.M. UNION COUNTY, OREGON		
SURVEYED FOR	CONSERVATION SERVICE	
SURVEYED BY	d.i.g.	Apr. 1981
Scale: 1" = 100'	Drawn by: d.i.g.	Apr. 1981

REFERENCE MATERIAL

- Map of survey no. 19-70
- Map of survey no. 57-73
- Map of survey no. 62-74
- Plat of Wood Villa Tracts

LEGEND

- Found monument of record.
- Set 5/8" x 30" iron pin with plastic cap marked "BGA SURVEY MARKER"
- *— Existing fence line
- () Record bearing & distance



C-S 1/16 cor. monument destroyed

S 1/4 corner sec. 34
1" pin with +
Brass cap bears
N 78° 12' 28" W, 5.23