

LEGEND

- FOUND ORIGINAL CORNER EVIDENCE AND SET MONUMENT AS DESCRIBED ON U.S.F.S. FORM R6-7100-57.
- SET MONUMENT AS DESCRIBED ON U.S.F.S. FORM R6-7100-57 BY SURVEY.
- ▲ CORNER SET BY HANLEY ENGINEERING MARCH 30, 1981
- ◆ CORNER RESET IN APRIL, 1981
- [] METERS
- () RECORD DATA FROM ORIGINAL SURVEY
- ⑤ SECTION NUMBERS

BASIS OF BEARING

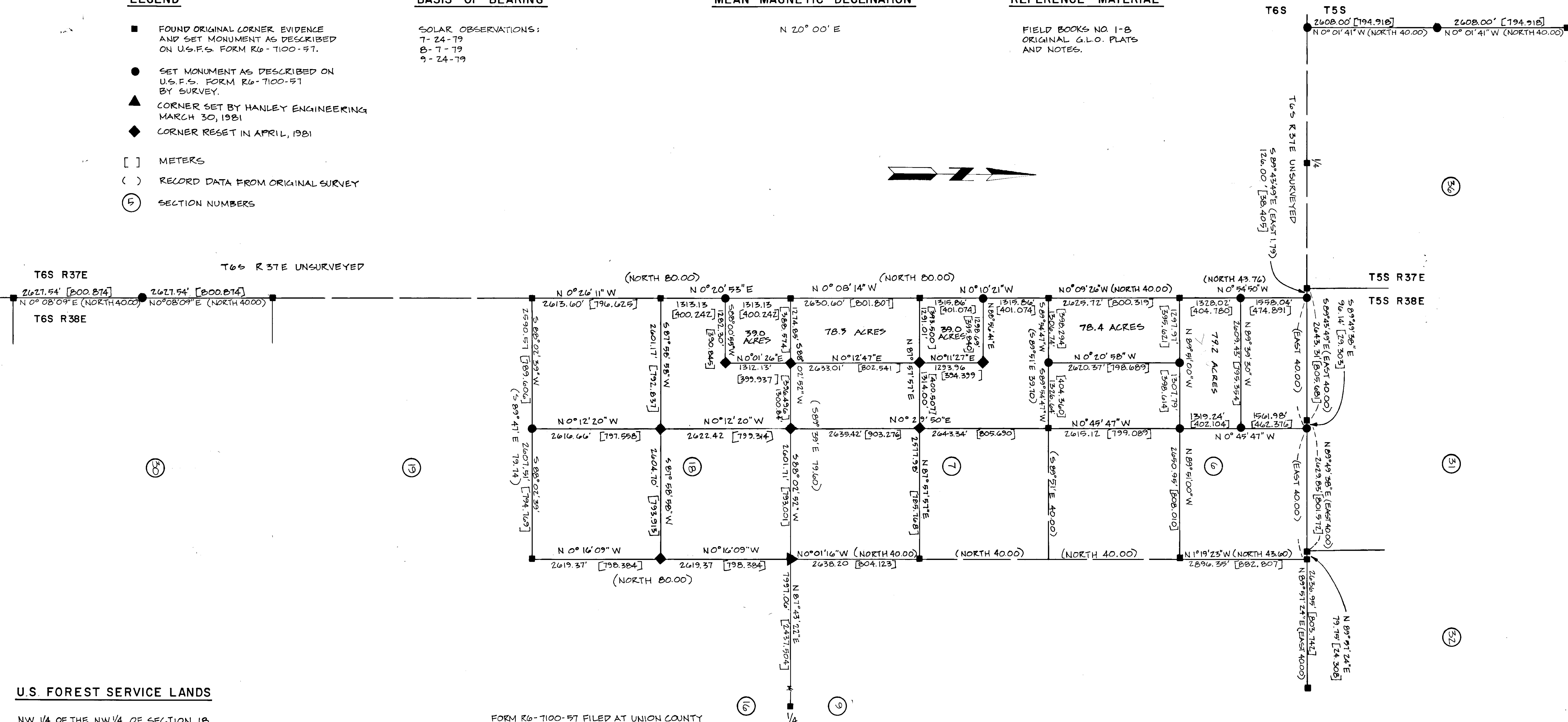
SOLAR OBSERVATIONS:
 7-24-79
 8-7-79
 9-24-79

MEAN MAGNETIC DECLINATION

N 20° 00' E

REFERENCE MATERIAL

FIELD BOOKS NO. 1-B
 ORIGINAL G.L.O. PLATS
 AND NOTES.



U.S. FOREST SERVICE LANDS

NW 1/4 OF THE NW 1/4 OF SECTION 18
 SW 1/4 OF THE NW 1/4, W 1/2 OF THE SW 1/4 OF SECTION 7
 S 1/2 OF THE NW 1/4, W 1/2 OF THE SW 1/4 OF SECTION 6

FORM R6-7100-57 FILED AT UNION COUNTY SURVEYOR'S FOR THE STANDARD INDEX FILE NUMBER: T5S, R37E, V-21, X-21, Z-21, Z-23 AND Z-25. T5S, R38E, Z-3, Z-5, Z-7, AND Z-9. T6S, R38E, A-1, A-3, A-5, B-1, B-3, C-1, C-2, C-3, C-5, E-1, E-2, E-3, F-1, F-2, G-1, G-2, G-3, G-5, J-1, J-2, J-3, J-5, J-11, K-1 AND L-5.

FORM R6-7100-57 FILED AT BAKER COUNTY SURVEYOR'S FOR THE STANDARD INDEX FILE NUMBER: T6S, R38E, K-2, L-1, L-3, N-1, N-3, N-5, P-1, R-1, T-1, V-1 AND X-1.

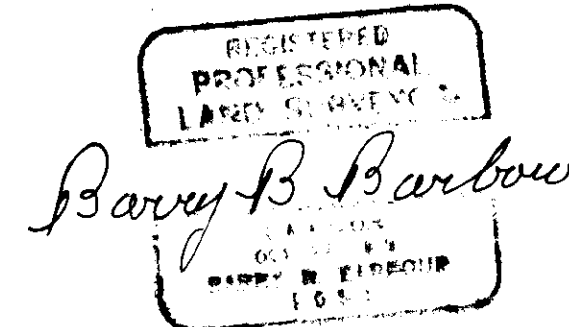
NOTE: NEW R6-7100-57s FILED AT UNION COUNTY SURVEYOR'S FOR STANDARD INDEX FILE NUMBER F-2, G-2, G-3, J-2, J-3, & L-5 MONUMENTS RESET IN APRIL, 1981.

NOTE: NEW R6-7100-57s FILED AT BAKER COUNTY SURVEYOR'S FOR STANDARD INDEX FILE NUMBER K-2 & L-3 FOR MONUMENTS RESET IN APRIL, 1981.

I, BARRY B. BARBOUR, a registered land surveyor in the State of Oregon, hereby certify that this plat and the notes hereon, or attached, are a correct representation of a survey I performed during July — October, 1979, for the U.S. Forest Service, in accordance with the Statutes of the State of Oregon and with the Articles of the Contract.

Barry B. Barbour

Barry B. Barbour
 Registered Land Surveyor
 Oregon License 1051



UNION COUNTY SURVEYOR
Date Received <u>6-26-81</u>
Date Filed <u>6-26-81</u>
By <u>G. LANSBIE DEPUTY</u>
File No. <u>23-81</u>

REVISED SURVEY MAP: APRIL, 1981

HANLEY ENGINEERING HAD INFORMATION FOR AN UNRECORDED MONUMENT FOR CORNER TO SECTIONS 7, 8, 17 & 18. THEY REMONUMENTED THIS MONUMENT & I AGREED WITH THEIR POSITION. I RESET MY EFFECTED MONUMENTS & HAVE REVISED MY SURVEY.

Barry B. Barbour
 BARRY B. BARBOUR
 P.L.S. 1051
 APRIL 30, 1981

MAP OF SURVEY	
SECTIONS 18, 7, 6 T6S R38E	
UNION & BAKER COUNTIES, OREGON	
FOR: U.S. FOREST SERVICE	
SCALE 1" = 1000'	BARRY B. BARBOUR LAND SURVEYOR
DATE OCT, 1979	SHEET NO. 1/1