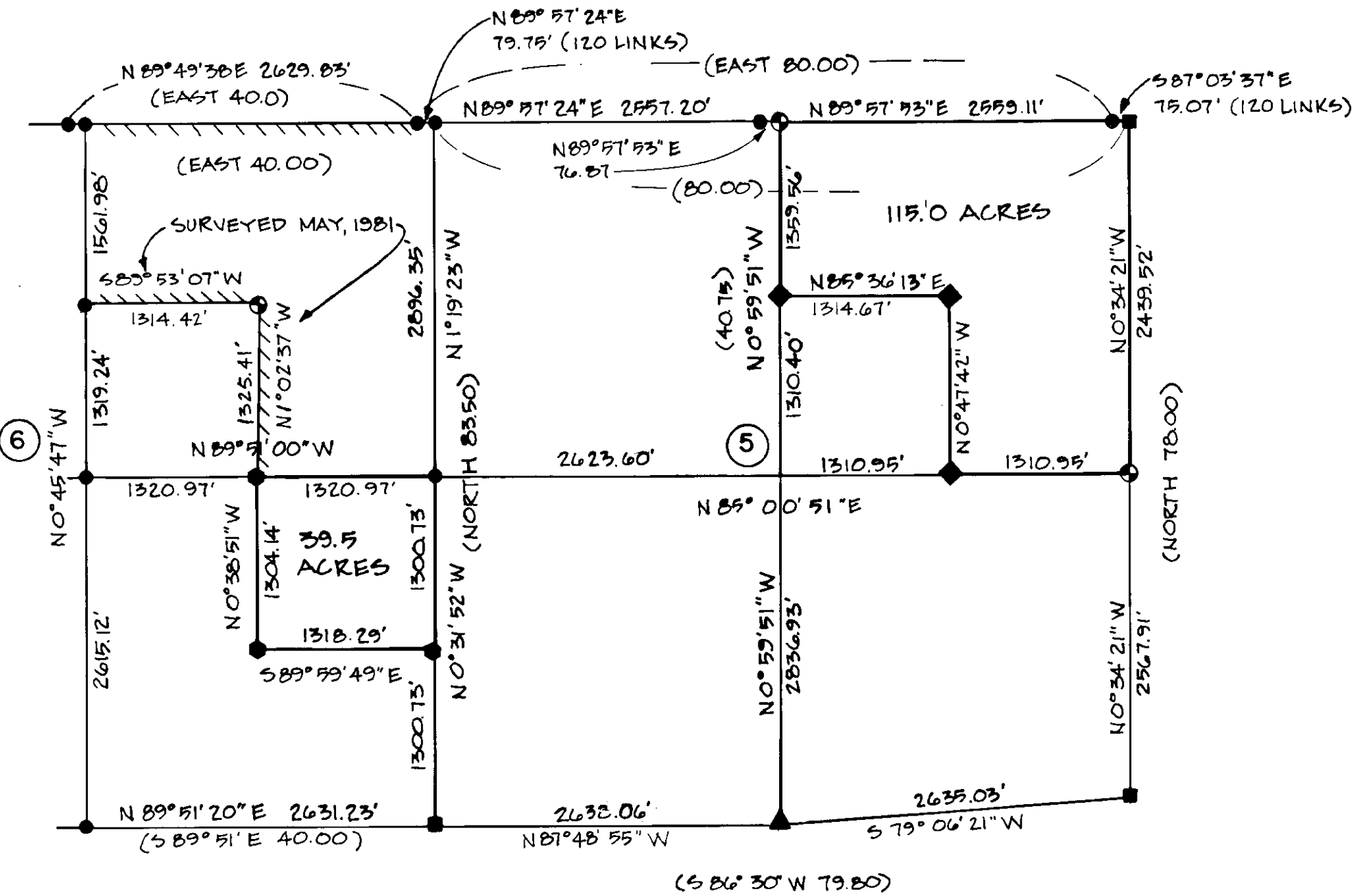
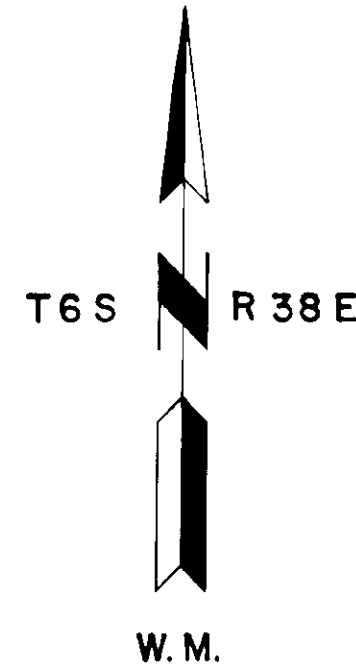


Date Received 6-26-81
Date Filed 6-26-81
By G. LANGRISH, DEPUTY
File No. 22-81



SECTIONS 5 & 6



LEGEND

- BRASS CAP MONUMENT SET IN 1979.
- BRASS CAP MONUMENTS SET FROM ORIGINAL CORNER EVIDENCE.
- ⊕ BRASS CAP MONUMENTS SET BY SURVEY.
- 1" x 3/8" GALVANIZED PIPE AND CROWN ZELLERBACH BRASS CAP MONUMENTS SET BY SURVEY.
- POSTED BOUNDARY LINE.
- () G.L.O. RECORD DATA.
- ⑤ SECTION NUMBERS
- ▲ CORNER SET BY HANLEY ENGINEERING MARCH 30, 1981
- ◆ CORNER RESET IN APRIL, 1981
- ||||| POSTED BOUNDARY 1981

BASIS OF BEARING

SOLAR OBSERVATION
AUGUST 7, 1979

REFERENCE MATERIAL

ORIGINAL G.L.O. NOTES AND PLATS.
SURVEY # 95-79.
FIELD BOOKS 1 & 2.

MEAN MAGNETIC DECLINATION

N 20° 00' E

NOTE: R6-7100-57 FILED UNION COUNTY SURVEYOR'S FOR STANDARD INDEX FILE NUMBER A-7, A-9, B-7, B-8, C-4, C-8, C-9, D-4, D-5, E-5, E-7 AND E-9

NOTE: NEW R6-7100-57s FILED AT UNION COUNTY SURVEYOR'S FOR STANDARD INDEX FILE NUMBER B-7, B-8 & C-8, MONUMENTS RESET IN APRIL, 1981.

I, BARRY B. BARBOUR, a registered land surveyor in the State of Oregon, hereby certify that this plat and the notes hereon, or attached, are a correct representation of a survey I performed during May - June, 1980 for Crown Zellerbach Corporation in accordance with the Statutes of the State of Oregon.

Barry B. Barbour

BARRY B. BARBOUR
REGISTERED LAND SURVEYOR
OREGON LICENSE 1051

REGISTERED
PROFESSIONAL
LAND SURVEYOR

Barry B. Barbour
OREGON
OCT. 17, 1978
BARRY B. BARBOUR
1051

REVISED SURVEY MAP: APRIL, 1981
HANLEY ENGINEERING SET 1/4 CORNER FOR SECTIONS 5 AND 8 FROM INFORMATION THEY HAD. I AGREED WITH THE NEW POSITION, RESET MY EFFECTED MONUMENTS AND HAVE REVISED MY SURVEY

Barry B. Barbour
Barry B. Barbour
P.L.S. 1051
April 30, 1981

SECTIONS 5 & 6, T6S, R38E, W.M.		
UNION COUNTY,		OREGON
FOR: CROWN ZELLERBACH CORPORATION		
SCALE 1" = 1000'	BARRY B. BARBOUR PROFESSIONAL LAND SURVEYOR	SHEET NO. 1 of 1
DATE JUNE, 1980		