

BASIS OF BEARING

Survey Number 108-72

REFERENCE MATERIAL

1922 Remonumentation of La Grande
Plat of Home Investment Addition
Survey Number 60-70
Survey Number 30-72
Survey Number 108-72
Survey Number 60-75


LEGEND

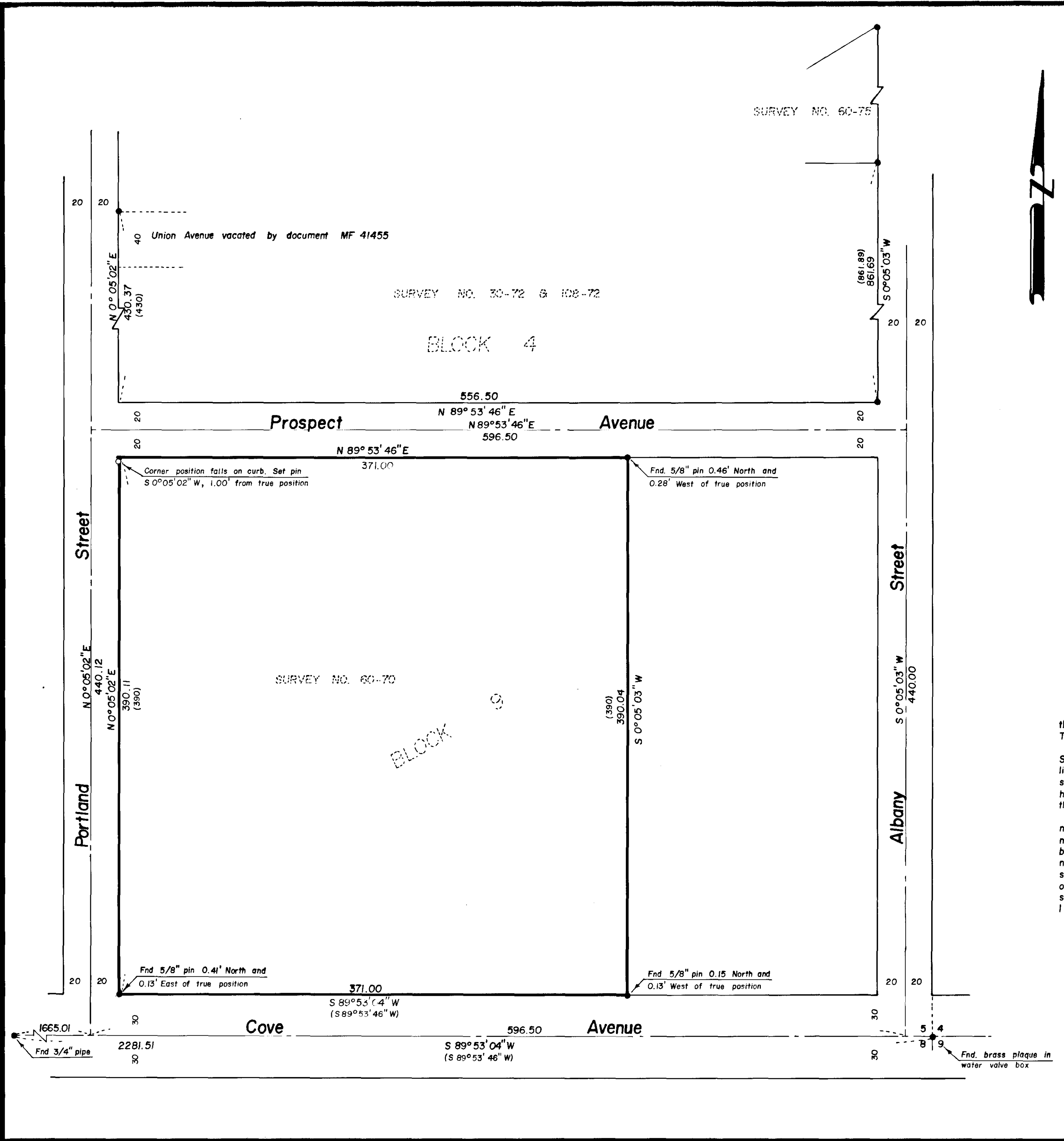
- Found monument of record
- Set 5/8" x 30" iron pin with plastic cap marked B-G-A SURVEY MARKER
- () Record distance or bearing
- Centerline

NARRATIVE

This survey was requested by the City of La Grande to replace the pin at the Northwest corner of Block 9, Home Investment Addition. This corner was destroyed during the construction of Portland Street. I base my survey on survey number 108-72. I occupy the Southeast corner of Block 4 and base my bearing on the East line of Block 4. I then travel West, tying the monuments as shown. I then compute the Northwest corner of said Block 9, however it falls on the new curb radius, and I therefore place the pin at a 1.00' offset along the West line of Block 9. Along the Section line I show the bearing as called by survey number 108-72, and a different bearing as called in survey number 6-81. The Section corner in Cove Avenue was destroyed by sewer construction and then replaced by city personell. It is now North of the original position, thus changing the bearing slightly. I decided to place all of this error on the South line of Block 9 and leave everything North of this line as was originally set by survey number 108-72, placing the error where it occurs. I find no other problems with this survey.

REGISTERED
PROFESSIONAL
LAND SURVEYOR
Gregory T. Blackman
OREGON
JULY 13, 1973
GREGORY T. BLACKMAN
991

 BAGETT - GRIFFITH & ASSOCIATES La Grande, Oregon Map of Survey Replacement of the Northwest corner of Block 9, Home Investment Addition to the City of La Grande UNION COUNTY, OREGON		
SURVEYED FOR	City of La Grande	
SURVEYED BY	GTB	2/81
Scale: 1" = 50'	Drawn by: RGR	2/81



15-81