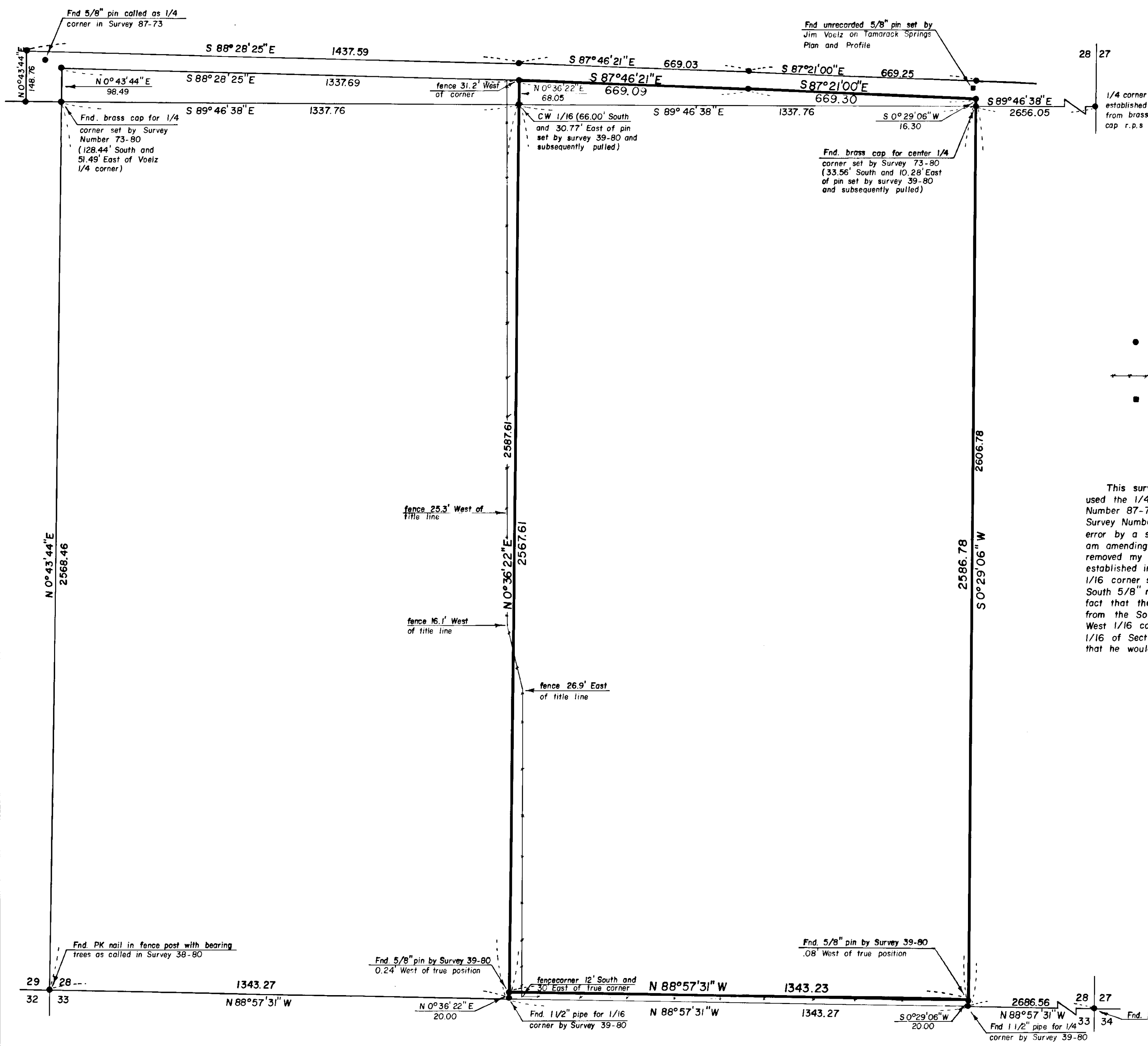


# BASIS OF BEARING

Survey Number 38-77



## REFERENCE MATERIAL

GLO Field Notes, Book 79  
 GLO Field Notes, Book 352  
 Survey Number 32-72  
 Survey Number 87-73  
 Survey Number 38-77  
 Survey Number 38-80  
 Survey Number 39-80  
 Survey Number 73-80  
 Unrecorded map of proposed Tamarack Springs Road, dated 10-4-1972  
 Deed description, recorded in the Union County Clerk's Office Volume 157, Page 269

## LEGEND

- Found 5/8" pin set by Survey Number 73-80 (unless otherwise noted)
- Existing fenceline
- Found unrecorded monument

## NARRATIVE

This survey was required to amend Survey Number 39-80. I used the 1/4 corner between Sections 28 and 29 as shown in Survey Number 87-73 by County Surveyor James Voelz. Since that time Survey Number 73-80 proved beyond doubt that this position was in error by a substantial margin. I have accepted the new position and am amending my survey to conform to the new 1/4 corner. I have removed my pins on the North end and accept the positions as established in Survey Number 73-80. The Southerly 1/4 corner and 1/16 corner set by me are still correct. I did not change the two South 5/8" monuments as I call them out of position as shown. The fact that they were out of position was due to the bearing changes from the South 1/4 corner to the Center 1/4 corner, and from the West 1/16 corner between Section 28 and 33 to the Center West 1/16 of Section 28. I then blazed the West line of Botzau so that he would be able to build fence.

REGISTERED  
 PROFESSIONAL  
 LAND SURVEYOR

*Gregory T. Blackman*

OREGON  
 217 15 1993  
 GREGORY T. BLACKMAN  
 991

## Amendment for Survey Number 39-80

BAGETT - GRIFFITH & ASSOCIATES La Grande, Oregon		
Map of Survey The East 1/2 of the Southwest 1/4 of Section 28, Township 1 North, Range 38 East, Willamette Meridian Summerville UNION COUNTY, OREGON		
SURVEYED FOR	KEN BOTZAU	
SURVEYED BY	GTB	1/81
Scale: 1" = 200'	Drawn by: RGR	1/81

8-81