

SITUATED IN THE SW 1/4, SE 1/4, SEC. 34
T2S, R38E, W.M.
UNION COUNTY, OREGON



BASIS OF BEARING

BEARINGS ARE TRUE, BASED ON THE OREGON STATE PLANE COORDINATE SYSTEM. SEE SURVEY # 25-80

LEGEND

- ⊕ FOUND MONUMENT OF RECORD (SEE SURVEY #25-80).
- ⊙ INITIAL POINT. 2"x30" GALV. PIPE BURIED 6" WITH BRASS CAP MARKED: "A-P-A INITIAL POINT 1980 UNION CO. CO-OP SUBDIVISION"
- 5/8" IRON ROD SET FOR SURVEY # 25-80
- SET 5/8" IRON ROD WITH PLASTIC CAP MARKED AP&A.

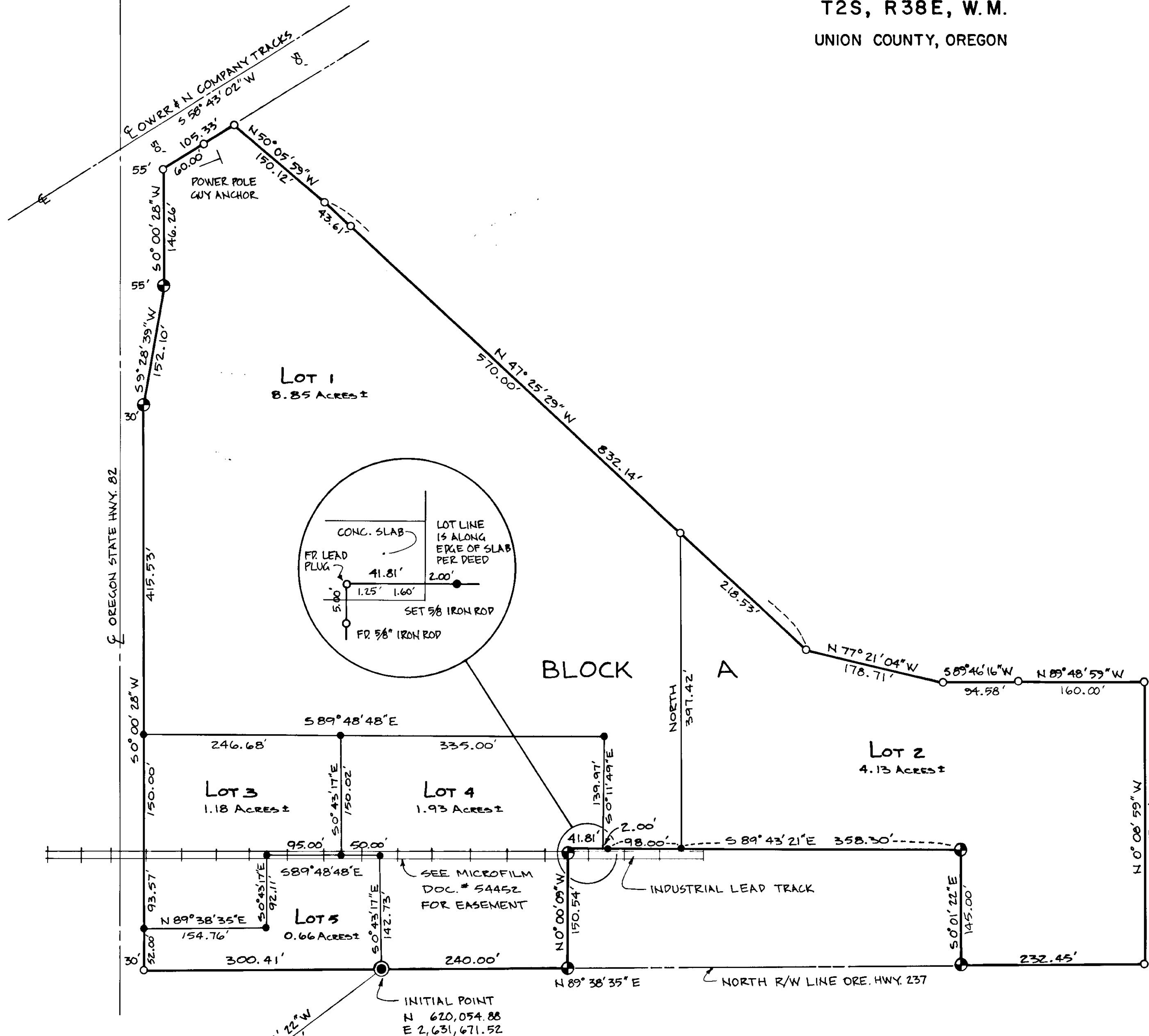
REFERENCE MATERIAL

RECORD SURVEY # 25-80
UNION CO. MICROFILM DOCUMENT 54452

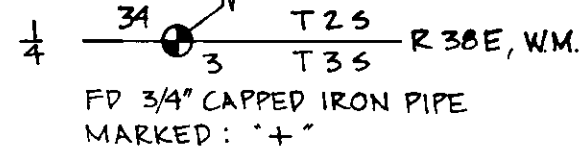
NOTE:

THIS SURVEY AND MAP WAS ORIGINALLY PERFORMED FOR THE PURPOSE OF CREATING A SUBDIVISION. OUR CLIENT NO LONGER REQUIRES THIS LAND TO BE SUBDIVIDED, THEREFORE, THIS MAP IS FILED TO SHOW ACTUAL MONUMENTATION IN PLACE.

Howard L. Perry
HOWARD L. PERRY DEC., 1980



OREGON STATE PLANE COORDINATES, NORTH ZONE, WERE ESTABLISHED AT THE INITIAL POINT BY TRAVERSE METHODS USING A ONE SECOND THEODOLITE AND ELECTRONIC DISTANCE MEASURING DEVICE FROM Δ COLLEGE 1946 U.S.C. & G.S. 1973 U.S.C. & G.S. REVISED COORDINATES FOR Δ COLLEGE ARE X = 2,620,259.45, Y = 612,431.42. A COMBINED DISTANCE REDUCTION FACTOR OF 0.9997696 WAS USED AS DETERMINED FROM FEDERAL PRINTING OFFICE PUBLICATION NO. 270 - "PLANE COORDINATE PROJECTION TABLES OREGON."



REGISTERED
PROFESSIONAL
LAND SURVEYOR
Howard L. Perry
OREGON
SEPTEMBER 23, 1977
HOWARD L. PERRY
1294

PROPERTY SURVEY SITUATED IN S.W.1/4, SE.1/4 SECTION 34, T2S, R38E, W.M. UNION COUNTY, OREGON		
SURVEYED FOR: UNION COUNTY CO-OP		
SCALE 1" = 100'	 anderson perry & associates, inc. <small>engineering • surveying • materials testing</small> LA GRANDE & ENTERPRISE, OREGON	SHEET NO. 1/1
DATE APR. 1980 JOB # 2681-10		

08-56
95-80